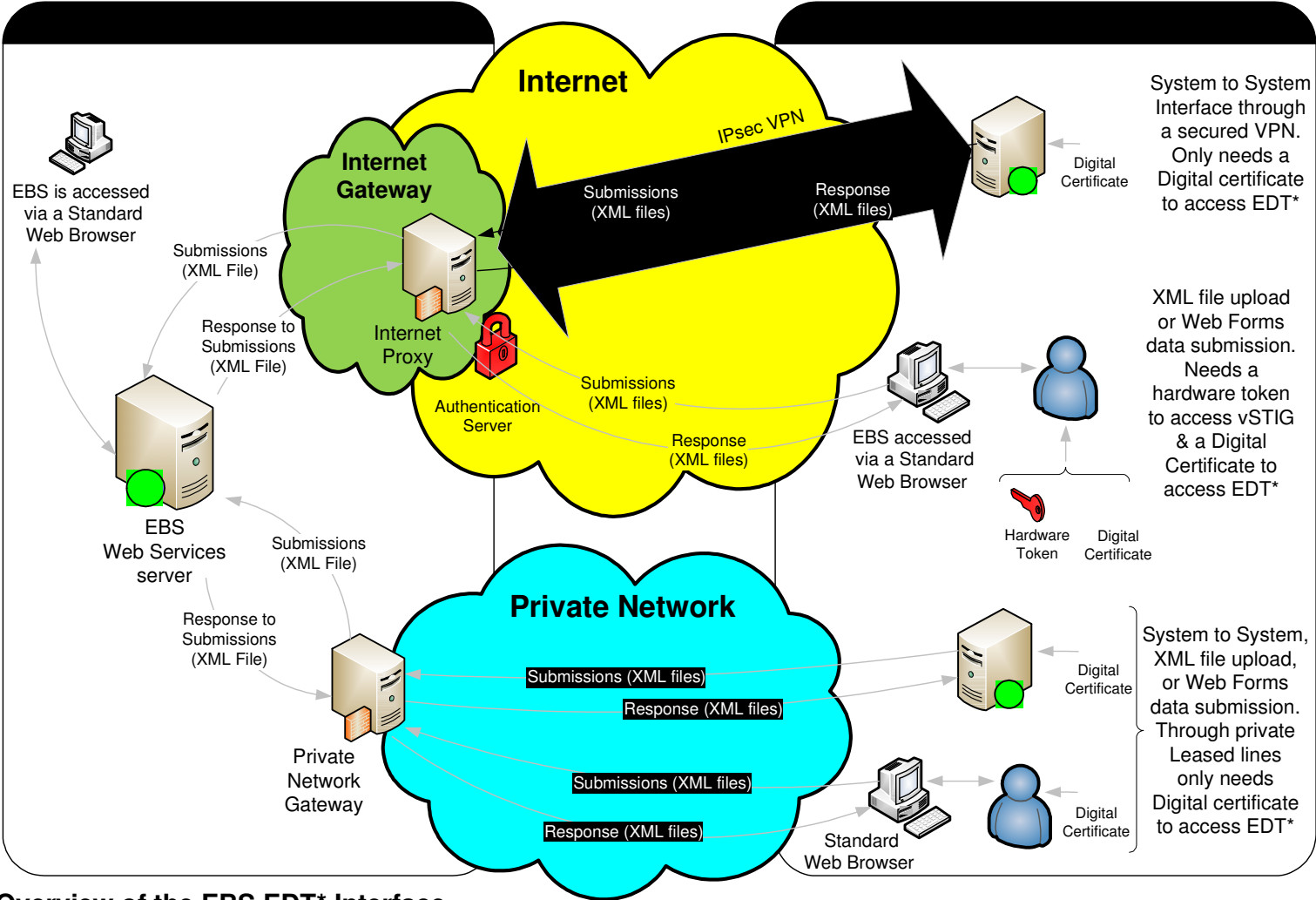


EDT* Interface & Peer Point Proxy Overview

Afe Ogun
December 2012

EDT* Interface Overview



Overview of the EBS EDT* Interface

Network Overview

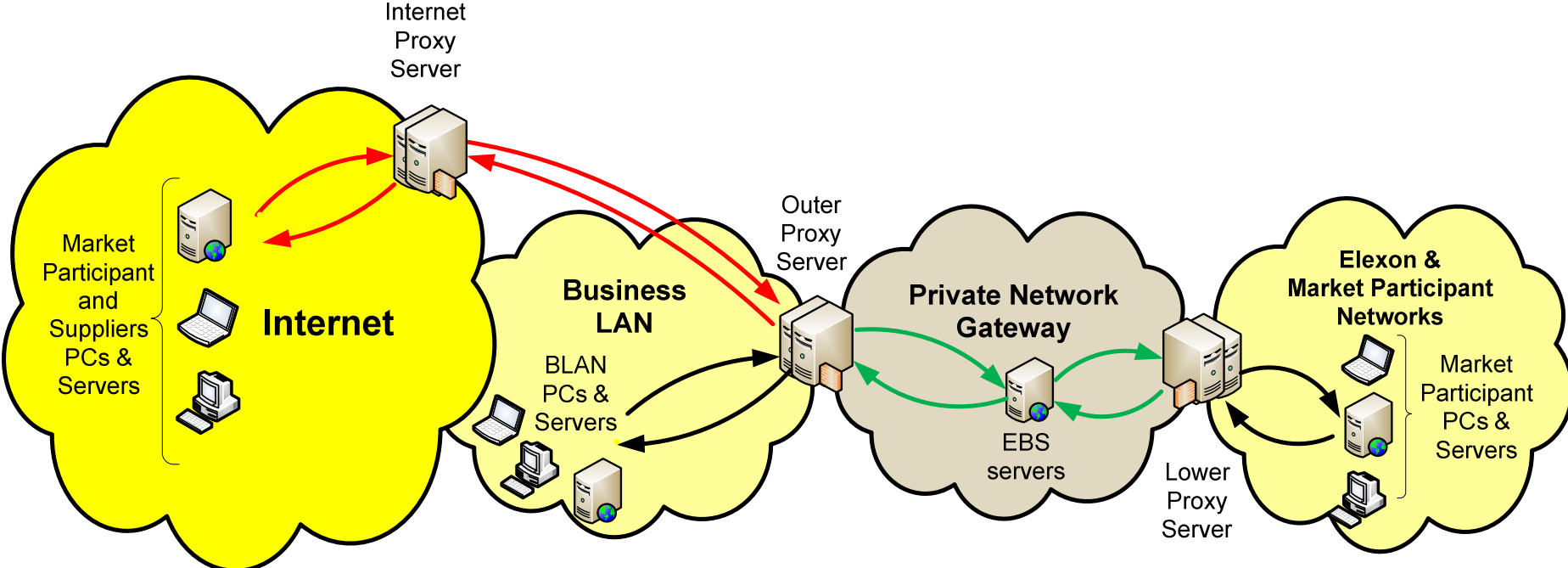
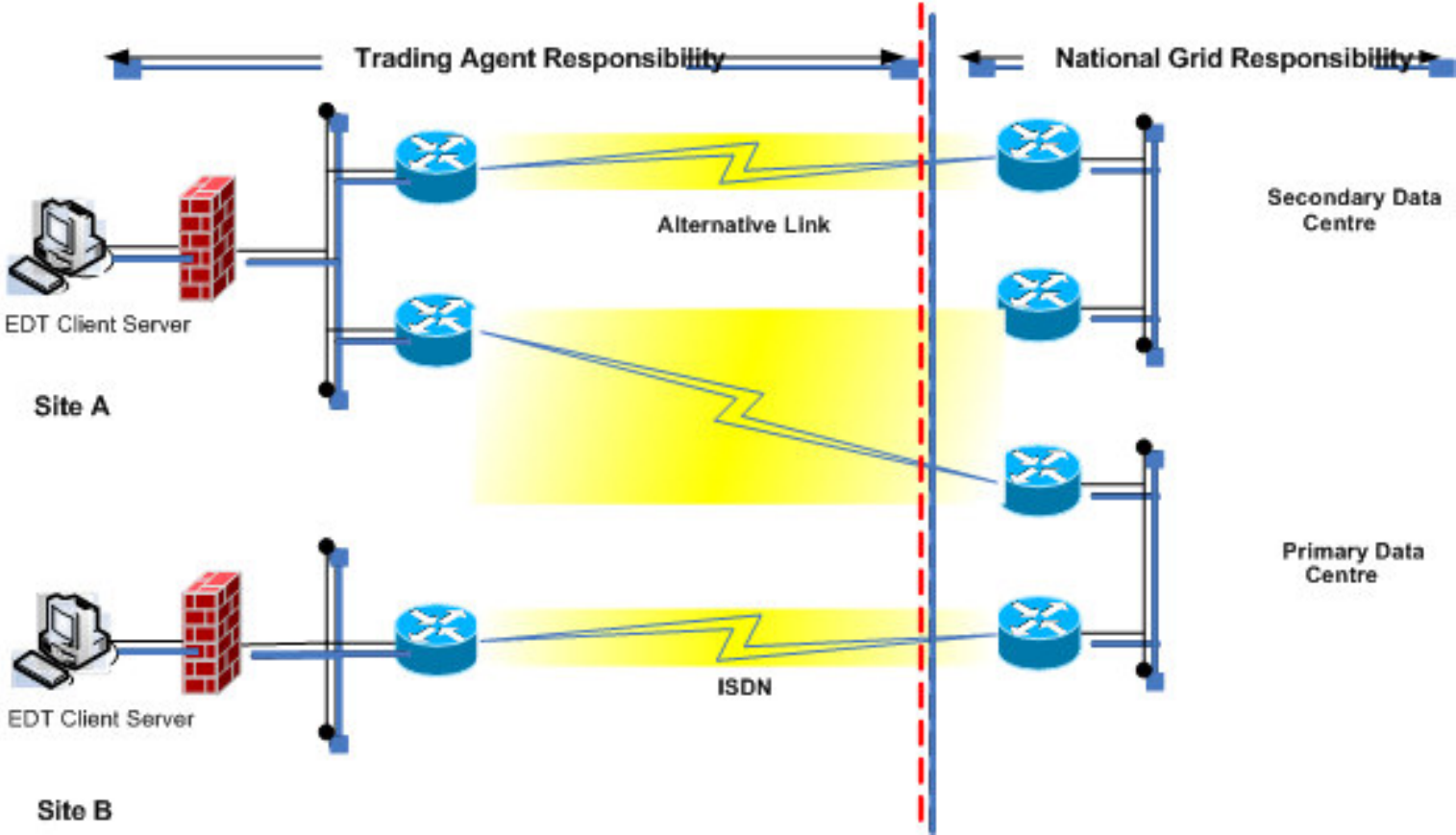


Figure 1.0: National Grid's Network Overview

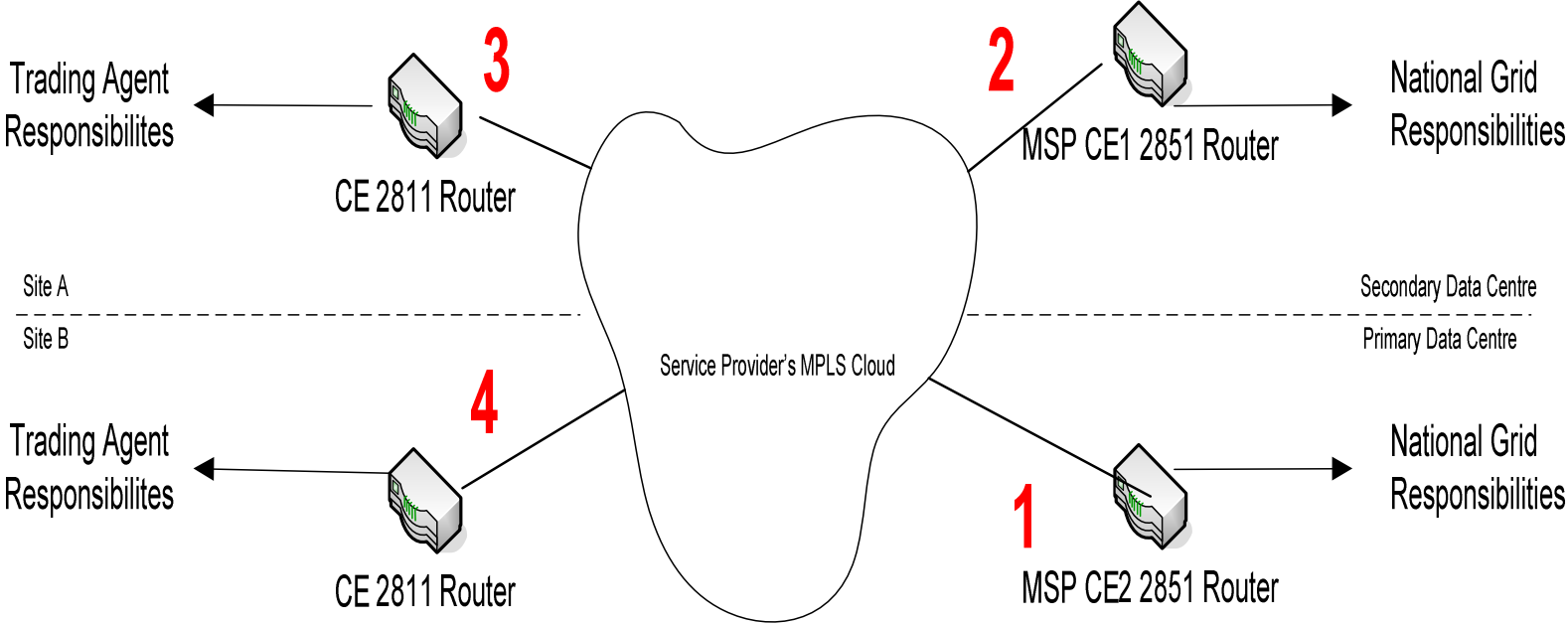
The Use of MPLS for EDT

Angela Richards-Chapman

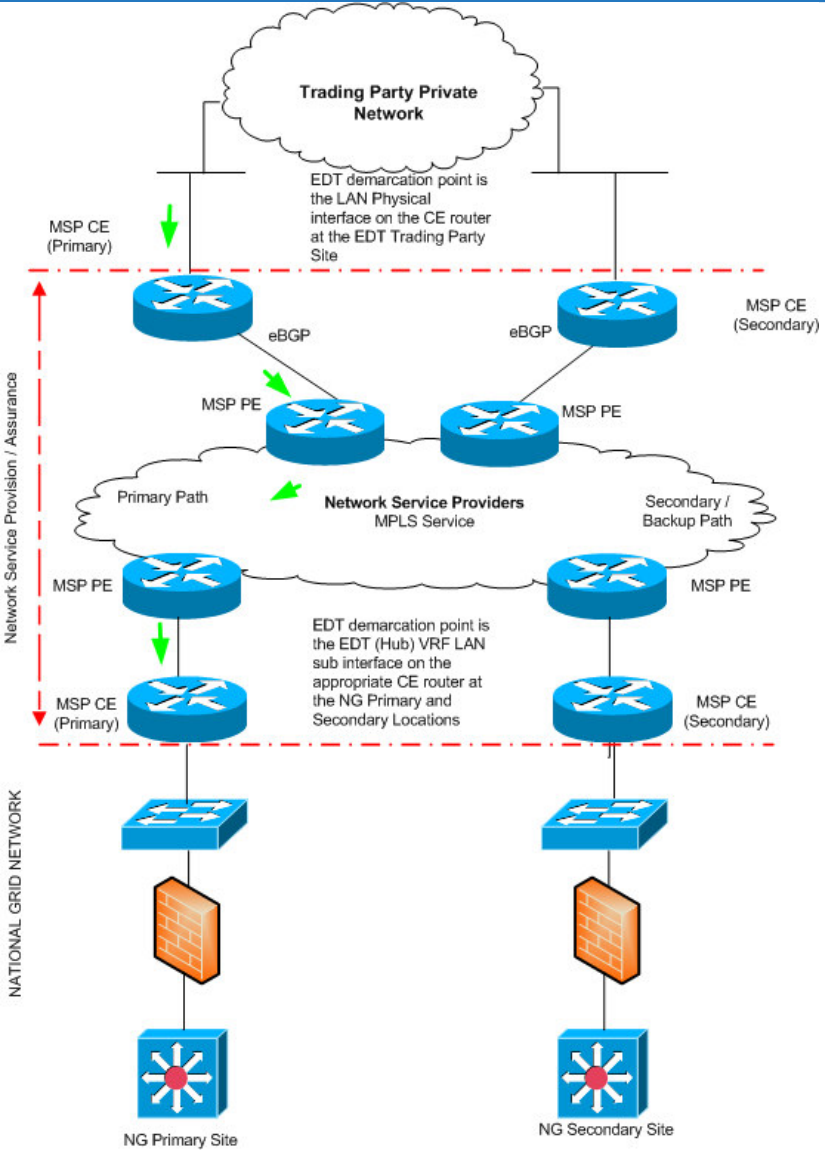
EDT Architecture



MPLS Service for EDT



MPLS Service Cont'd – support



Additional Information

- What to consider when you order your link(s)
 - A managed service including CE routers (don't order a 'wires only' service)
 - Completely diversely routed connections (if you're ordering primary and secondary links)
- EDT MPLS Connectivity Options (Primary / Secondary)
 - MPLS / MPLS
 - MPLS / ADSL
 - MPLS / ISDN (not recommended)
 - MPLS / 64Kb (not recommended)
- Service Providers
 - Currently have a number of parties connected using C&WW as the MPLS Service Provider. It is possible to connect using other SP's, but this has not yet been requested.

Frequently Asked Questions

- What's the lead time on installation?
 - 12 – 16 weeks
- Is it possible to set new links in parallel to old links to allow for quick switchover / rollback?
 - Yes
- Who orders the links?
 - The Trading Party
- Are there any restrictions on the location of the trading point?
 - No known restrictions – set up may take slightly longer into europe
- Who are the National Grid on site technical contacts?
 - Technical coordination should be via bmu.registration@nationalgrid.com
- How do we engage with National Grid to initiate a project
 - Contact the e-mail address above, a service request will be raised to initiate the project.