

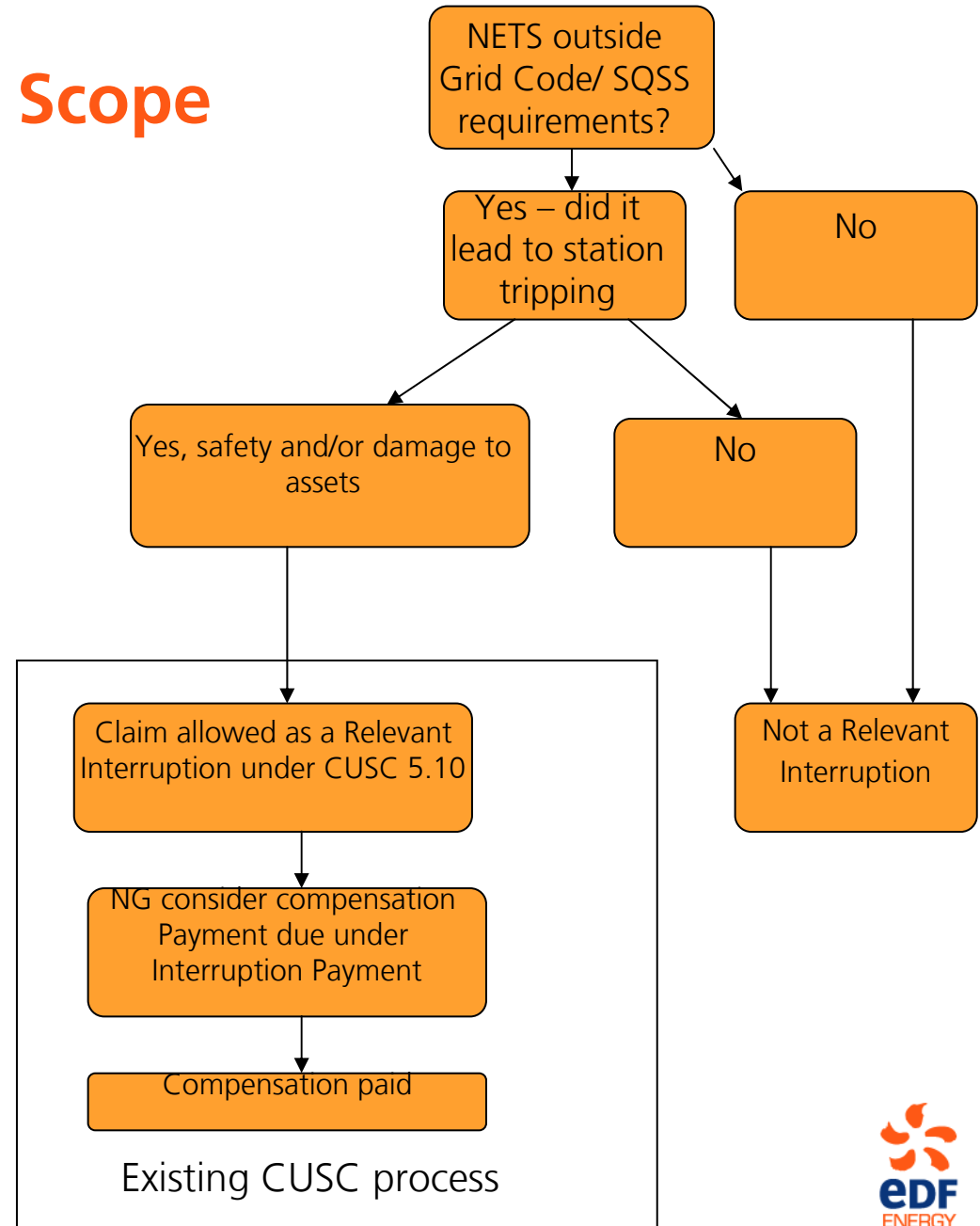
# 2<sup>nd</sup> CMP 235/ 6 workgroup meeting

NG Warwick, 18 November 2014  
John Costa, EDF Energy



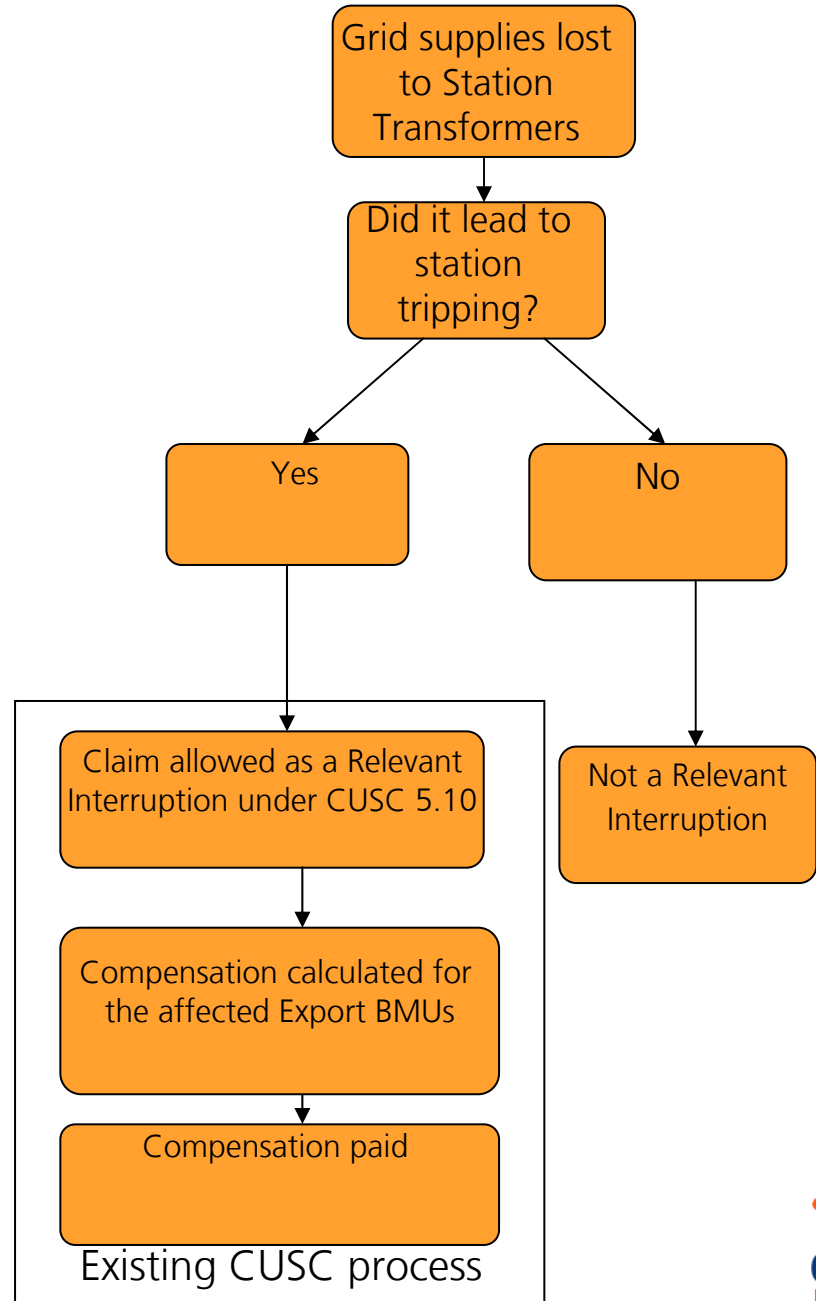
# CMP235 - Reminder of Scope

- Involuntary self-interruption as per CUSC 5.2.2 to be treated as a Relevant Interruption
- Trigger – NETS operation is outside Grid Code/ NG's licence requirements and station has self-disconnected
- Interruption Payment the same as Unplanned
  - minimum of 1 gate closure period up to 48 (24 hours)
- RPO test – not needed. Obligations are clear and difficult to prove in any case



# CMP236 Scope

- Proposal = clarify for avoidance of doubt that loss of grid supplies to STs resulting in Export BMU trip is a Relevant Interruption which leads to compensation being paid
  - Proposal does not intend to look at the triggers for station trips
- Power stations do not trip to get compensation which is a fraction of the cost to generators (no incentive)
- Plant have and will be designed (economically) to industry standards
  - investing in more robust connection unwarranted given the cost v likelihood of NG trips
- The design of future plant will not be affected by this mod so not relevant
- Thus, legal text as simple as that suggested in the mod proposal



# Thank you

- Any questions?

