



# GB Seven Year Statement 2009

## Figures

**Figure C.1.1** SHETL Forecast Power Flows at Winter Peak – 2009/10

**Figure C.1.2** SHETL Forecast Power Flows at Winter Peak – 2010/11

**Figure C.1.3** SHETL Forecast Power Flows at Winter Peak – 2011/12

**Figure C.1.4** SHETL Forecast Power Flows at Winter Peak – 2012/13

**Figure C.1.5** SHETL Forecast Power Flows at Winter Peak – 2013/14

**Figure C.1.6** SHETL Forecast Power Flows at Winter Peak – 2014/15

**Figure C.1.7** SHETL Forecast Power Flows at Winter Peak – 2015/16

**Figure C.2.1** SPT Forecast Power Flows at Winter Peak – 2009/10

**Figure C.2.2** SPT Forecast Power Flows at Winter Peak – 2010/11

**Figure C.2.3** SPT Forecast Power Flows at Winter Peak – 2011/12

**Figure C.2.4** SPT Forecast Power Flows at Winter Peak – 2012/13

**Figure C.2.5** SPT Forecast Power Flows at Winter Peak – 2013/14

**Figure C.2.6** SPT Forecast Power Flows at Winter Peak – 2014/15

**Figure C.2.7** SPT Forecast Power Flows at Winter Peak – 2015/16

**Figure C.3.1** NGET Forecast Power Flows at Winter Peak – 2009/10

**Figure C.3.2** NGET Forecast Power Flows at Winter Peak – 2010/11

**Figure C.3.3** NGET Forecast Power Flows at Winter Peak – 2011/12

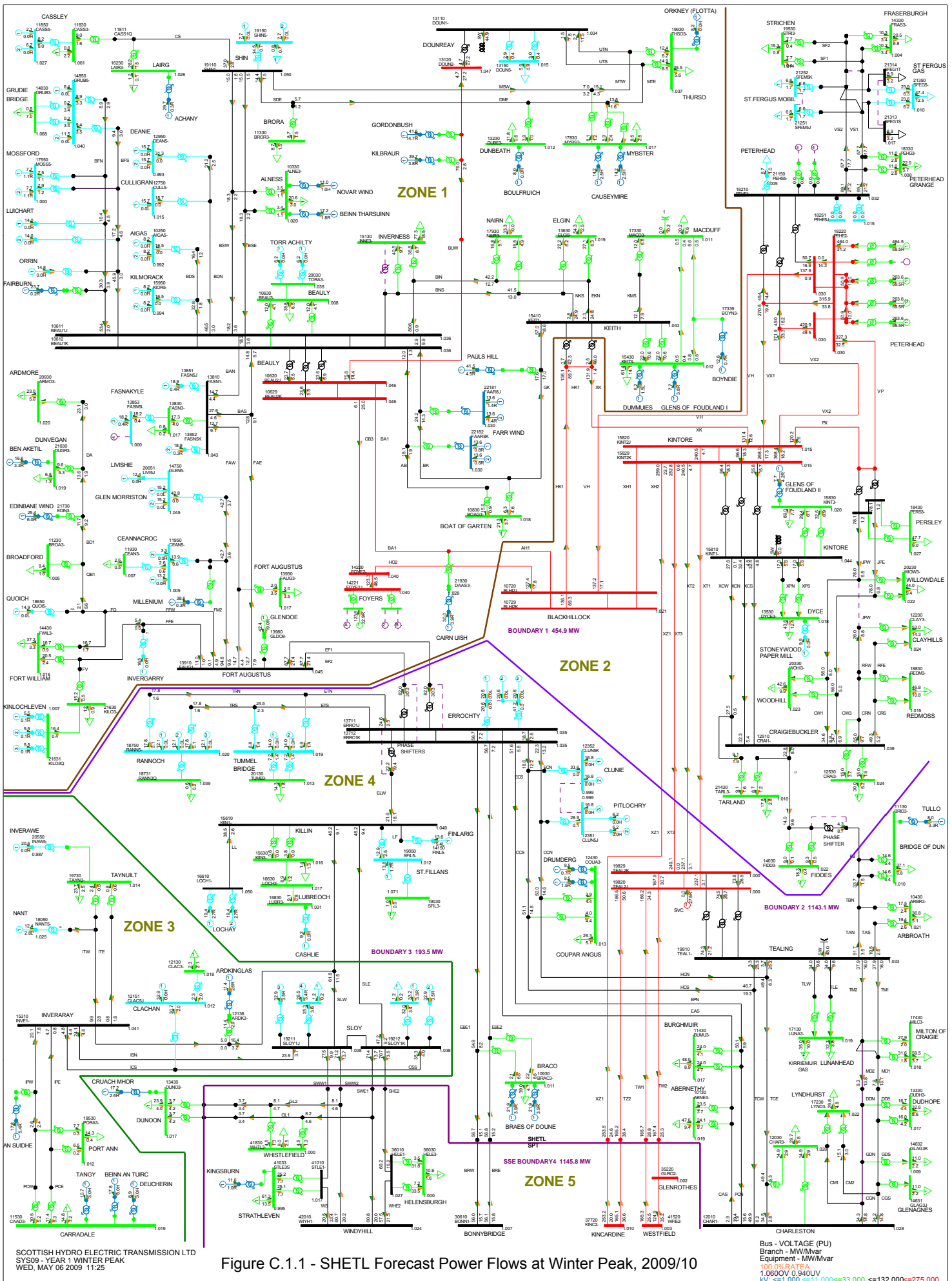
**Figure C.3.4** NGET Forecast Power Flows at Winter Peak – 2012/13

**Figure C.3.5** NGET Forecast Power Flows at Winter Peak – 2013/14

**Figure C.3.6** NGET Forecast Power Flows at Winter Peak – 2014/15

**Figure C.3.7** NGET Forecast Power Flows at Winter Peak – 2015/16

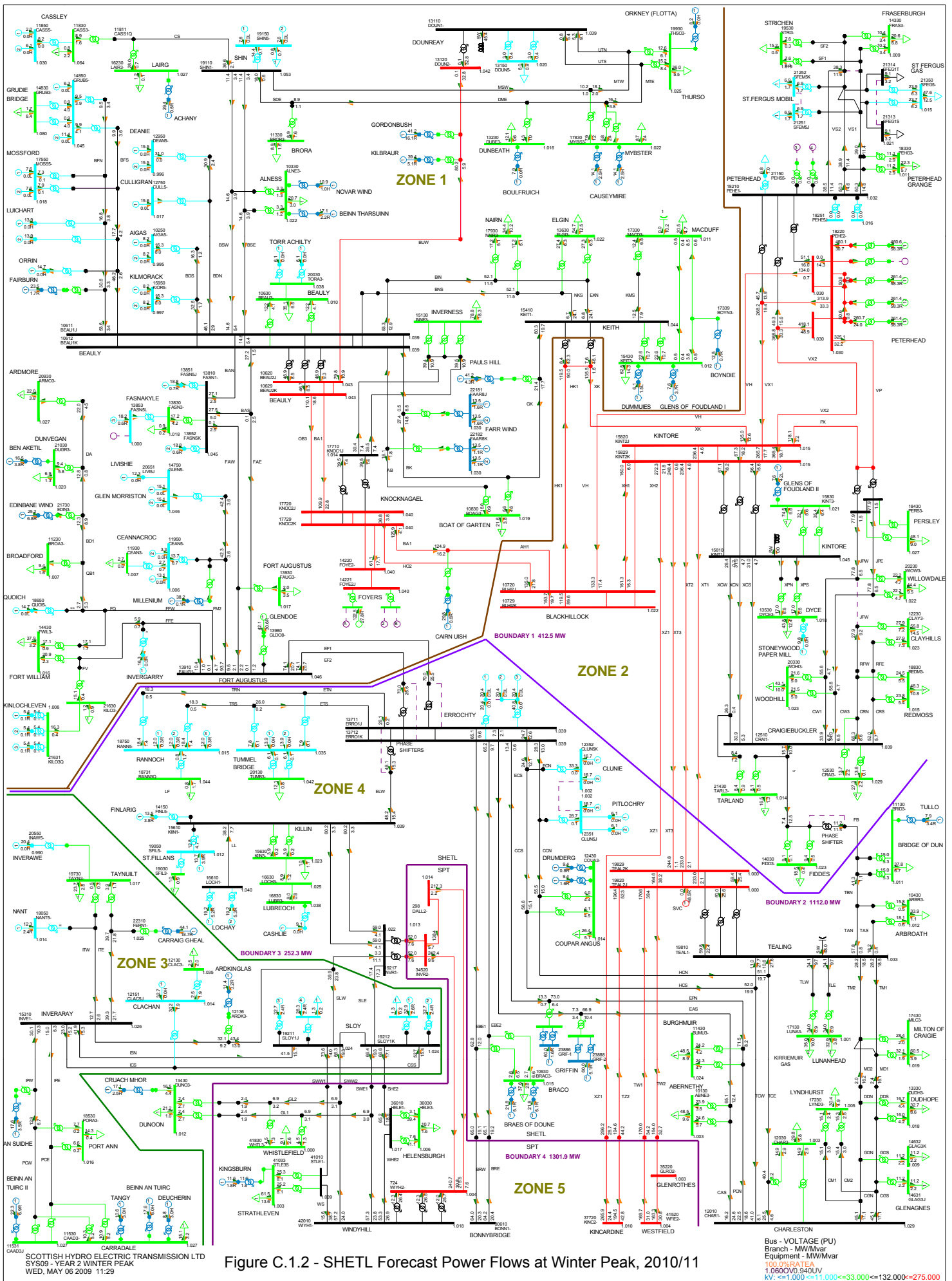
- 
- Copyright © 2009 National Grid
  - [Terms & conditions](#)
  - [Privacy policy](#)

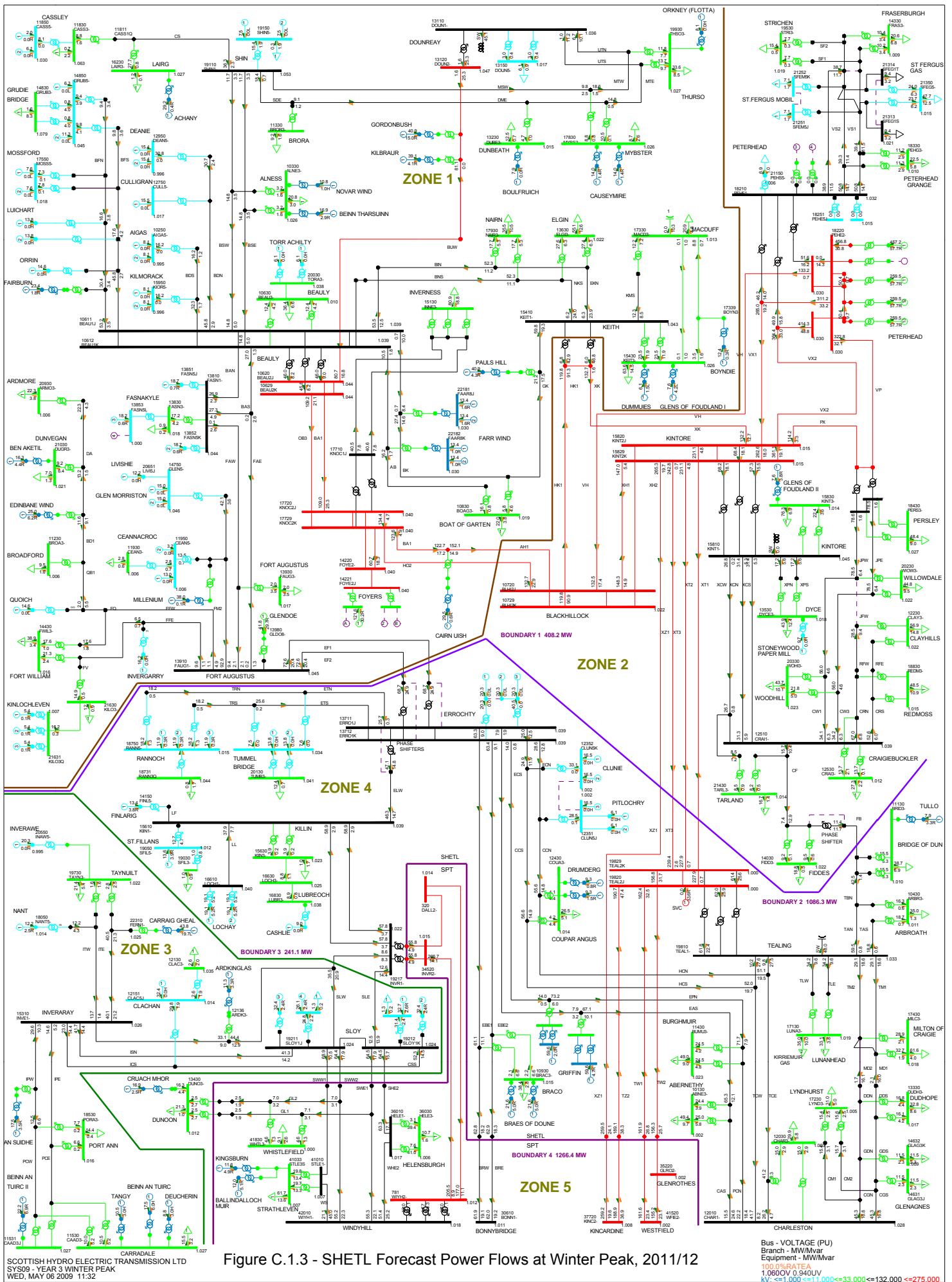


SCOTTISH HYDRO ELECTRIC TRANSMISSION LTD  
 SY509 - YEAR 1 WINTER PEAK  
 WED, MAY 06 2009 11:25

Figure C.1.1 - SHETL Forecast Power Flows at Winter Peak, 2009/10

Bus - VOLTAGE (PU)  
 Branch - MW/Mvar  
 Equipment - MW/Mvar  
 100 OPERATED  
 1.060kV 0.940UV  
 kV: <=1,000 <=11,000 <=33,000 <=132,000 <=275,000





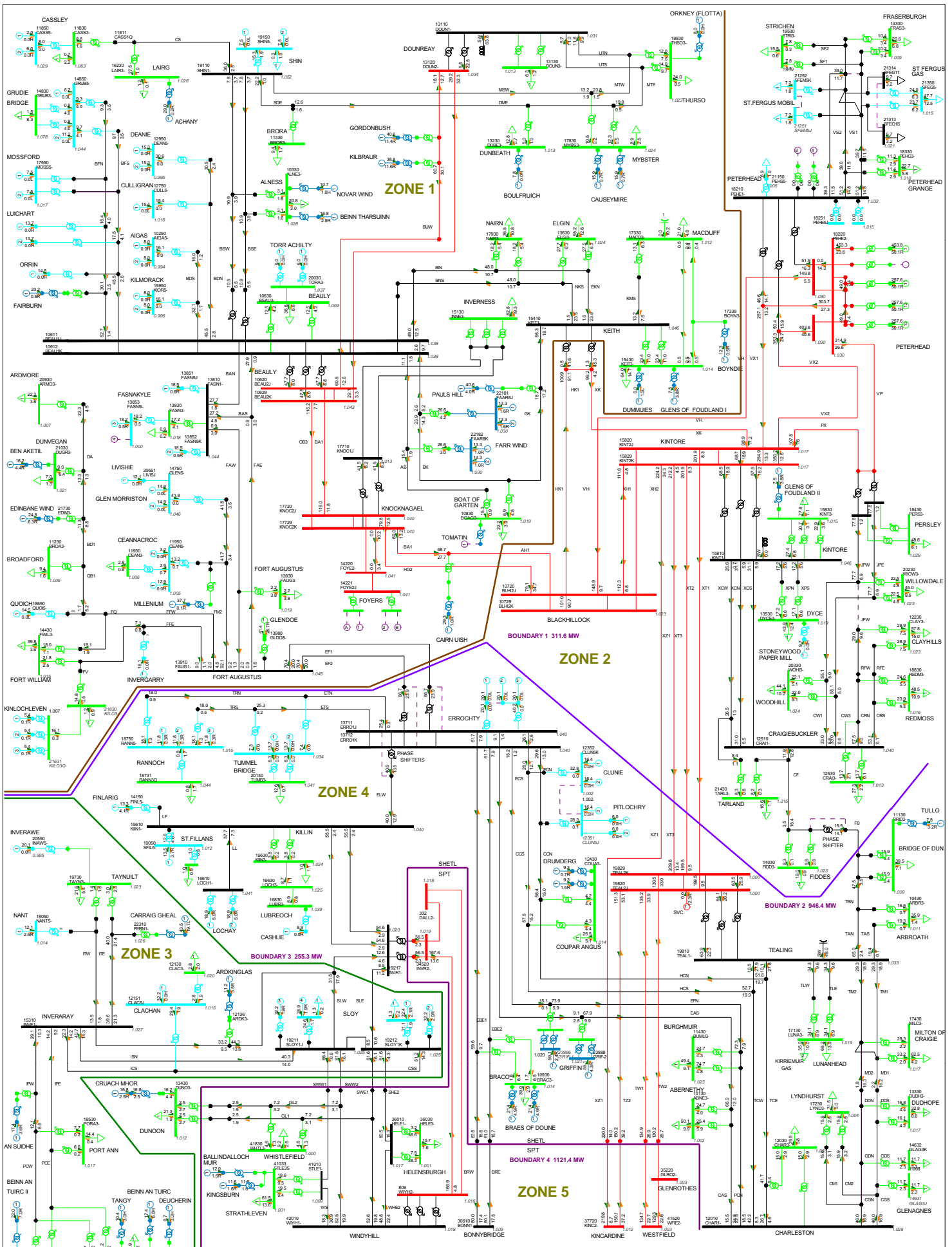


Figure C.1.4 - SHETL Forecast Power Flows at Winter Peak, 2012/13

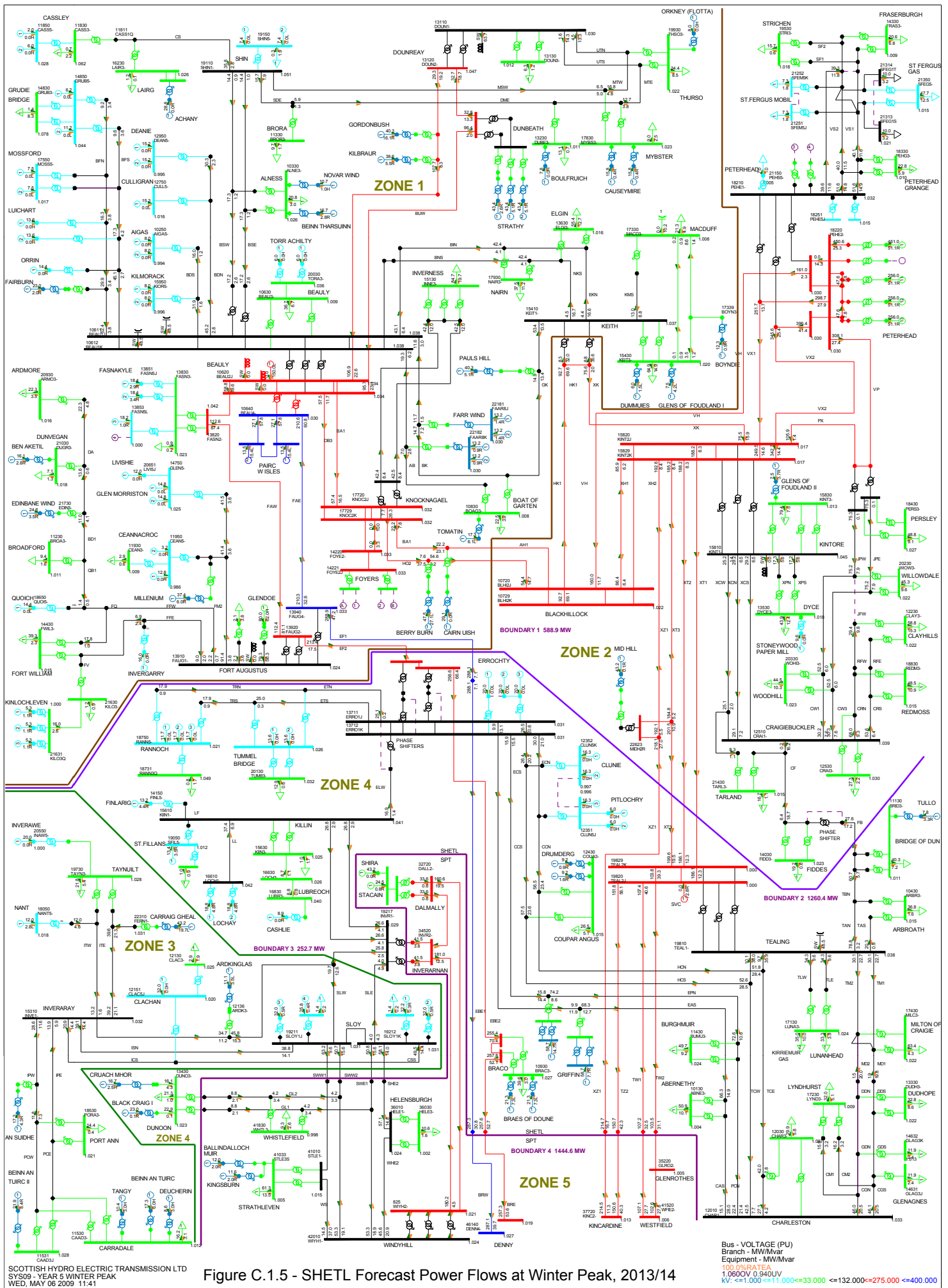
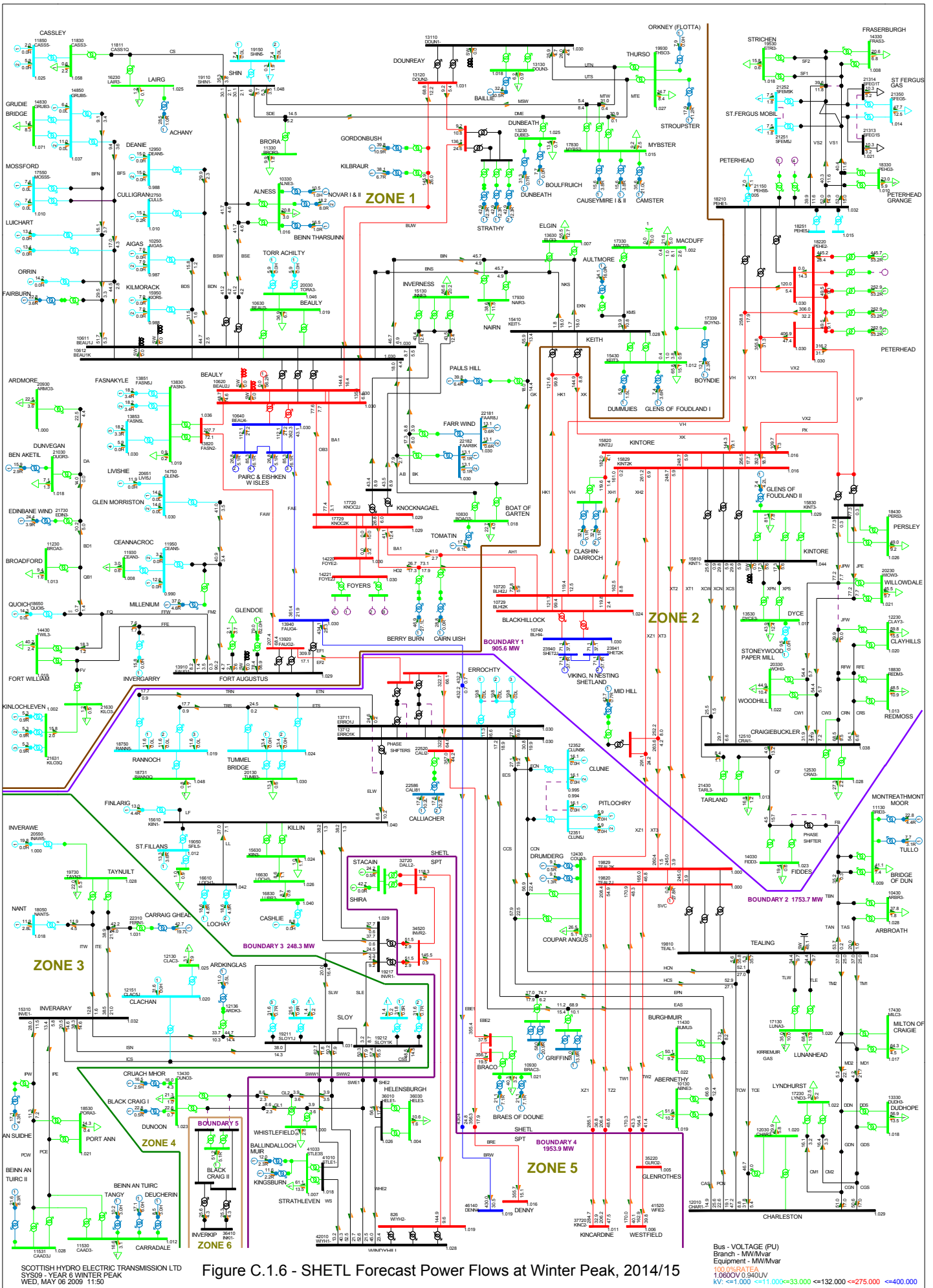


Figure C.1.5 - SHETL Forecast Power Flows at Winter Peak, 2013/14



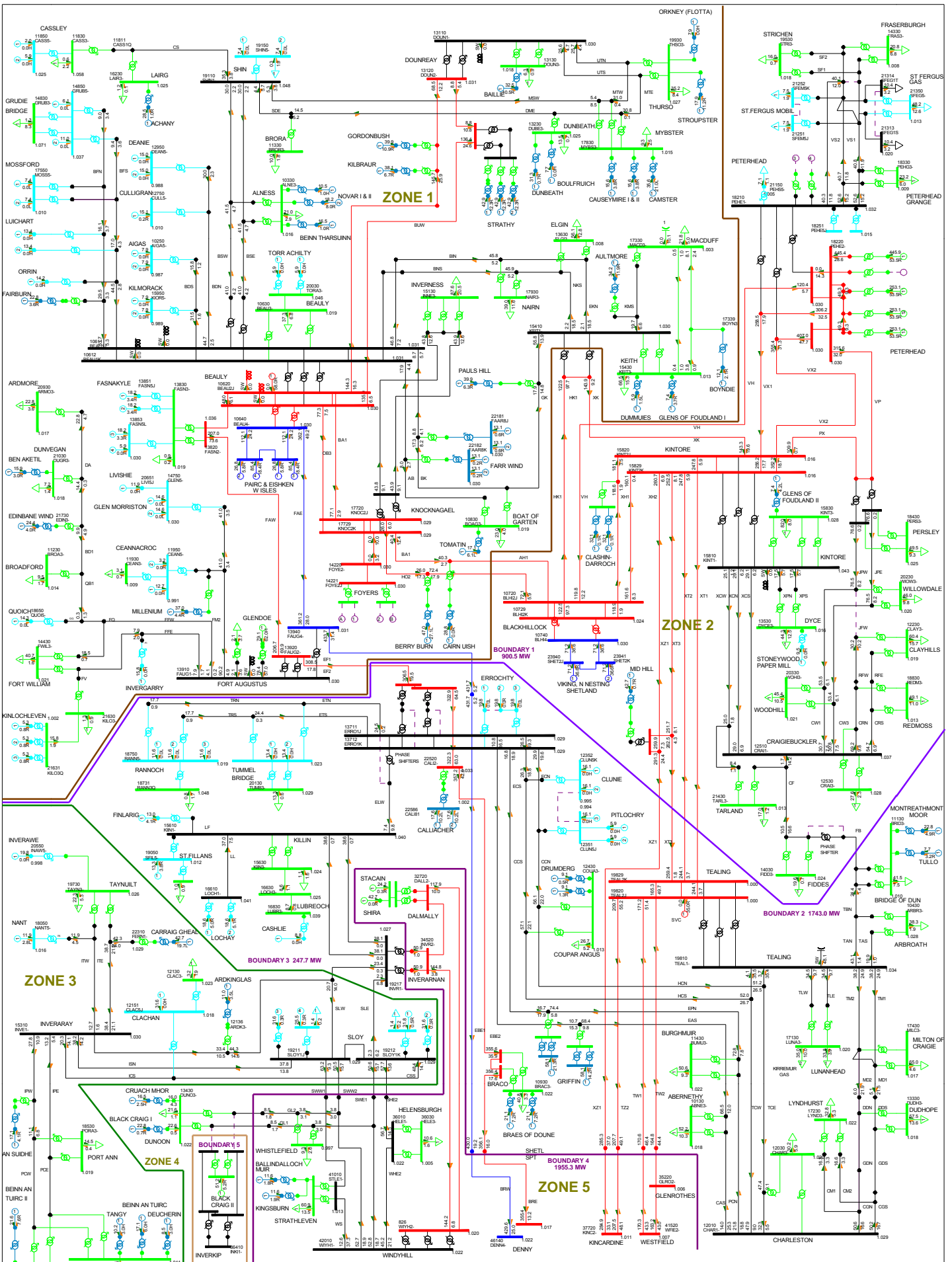
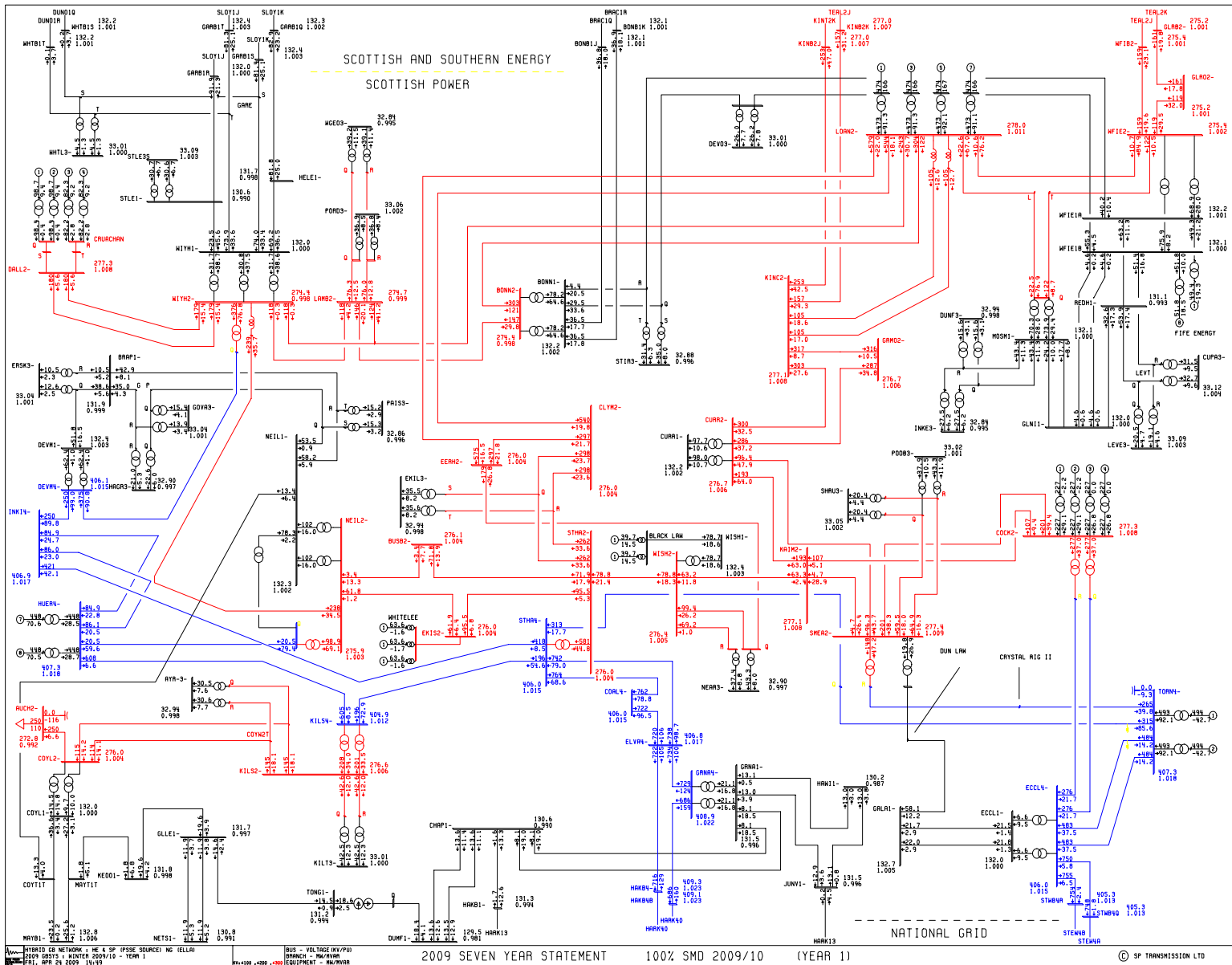


Figure C.1.7 - SHETL Forecast Power Flows at Winter Peak, 2015/16





HYBRID DB NETWORK - HE 4 SP (PSE SOURCE) NO ILLAI  
 1000 DBS - WINTER 2009/10 - YEAR 1  
 FRI, APR 24 2009 14:59

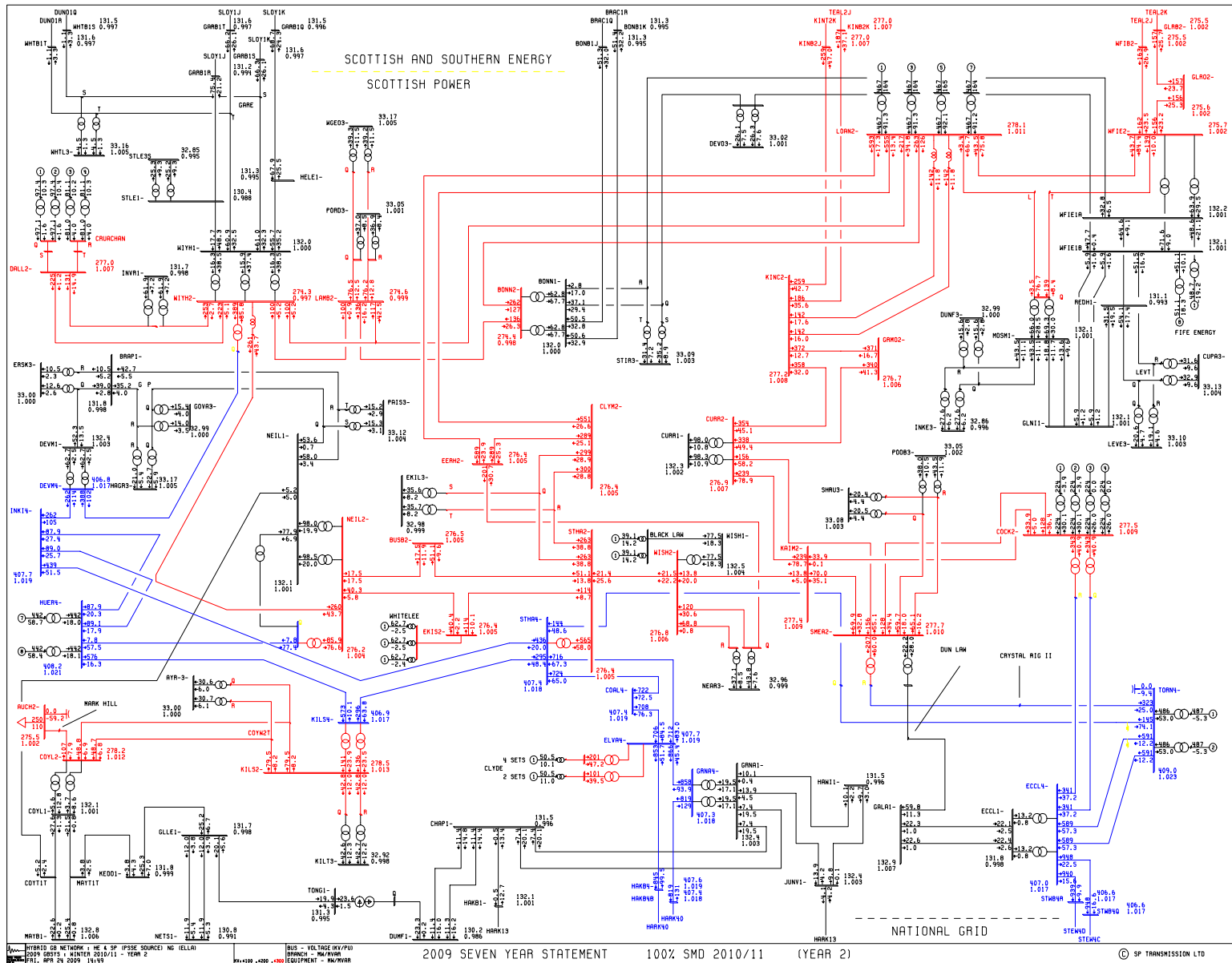
BUS - VOLTAGE (KV/PV)  
 BRANCH - MW/MVAR  
 EQUIPMENT - MW/MVAR

2009 SEVEN YEAR STATEMENT

100% SMD 2009/10

(YEAR 1)

© SP TRANSMISSION LTD

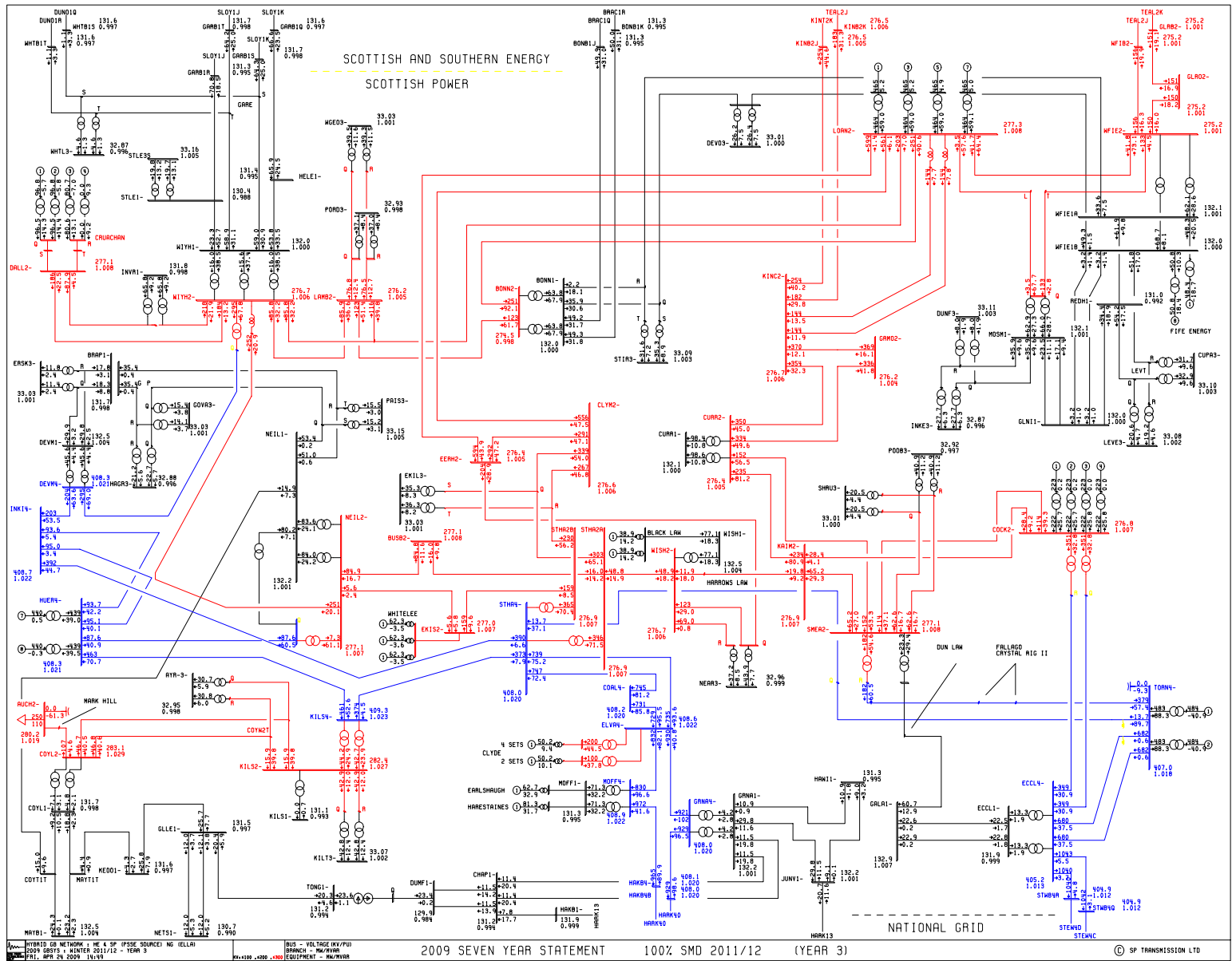


WATTS DB NETWORK: HE 4 SP (PSE SOURCE) NO ILLAR  
 1009 DBS: 1 NUMBER 2010/11 - YEAR 2  
 FRI, APR 24 2009 14:49

BUS - VOLTAGE (KV/PV)  
 BRANCH - MW/MVAR  
 EQUIPMENT - MW/MVAR

2009 SEVEN YEAR STATEMENT      100% SMD 2010/11      (YEAR 2)

© SP TRANSMISSION LTD



NETWORK DATA SHEET: HE 4 SP (PSE SOURCE) NO IELLR  
 1509 09/11 NUMBER 001212 - YEAR 3  
 FRI, APR 24 2009 14:59

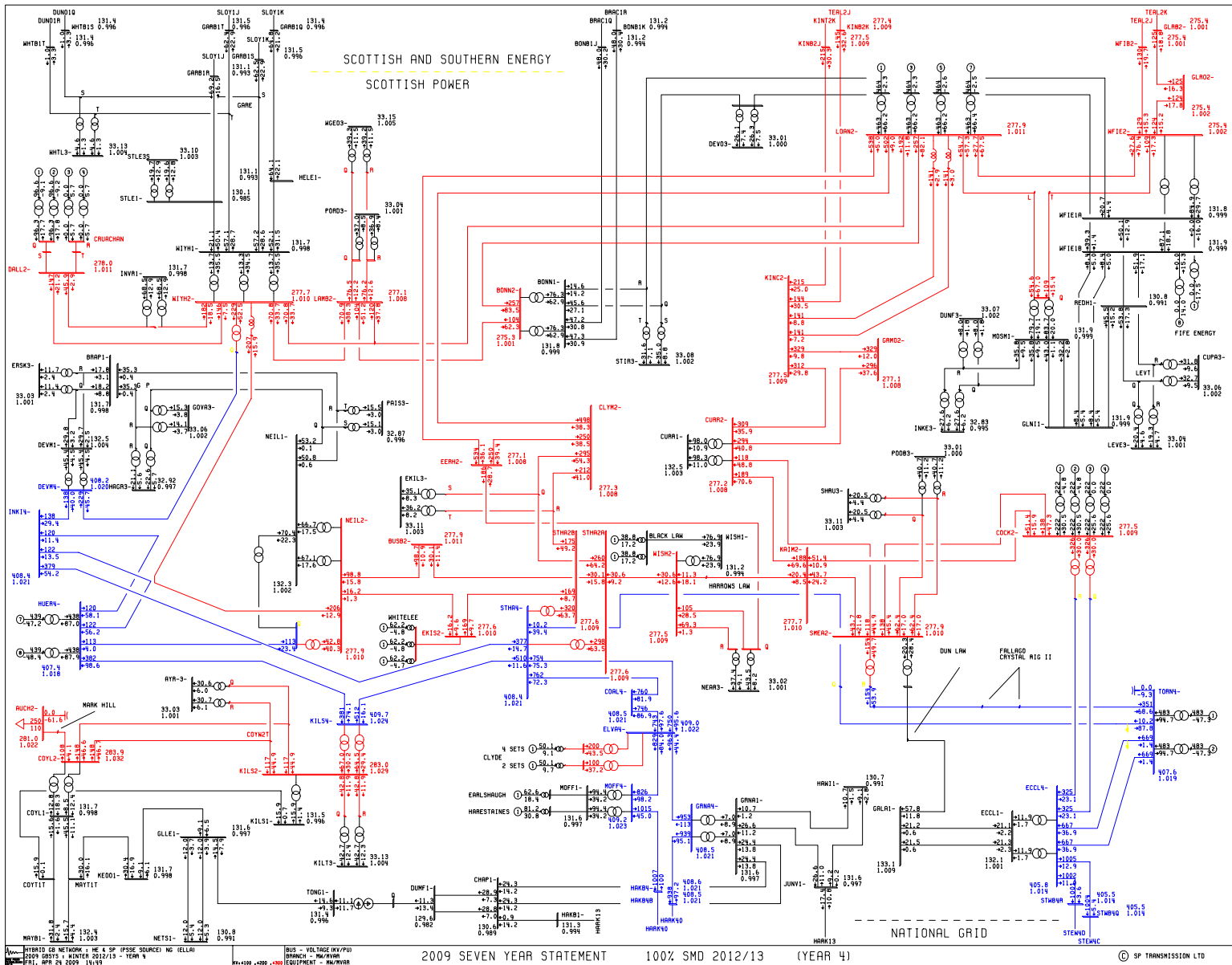
BUS - VOLTAGE (KV/PV)  
 BRANCH - MW/MVAR  
 EQUIPMENT - MW/MVAR

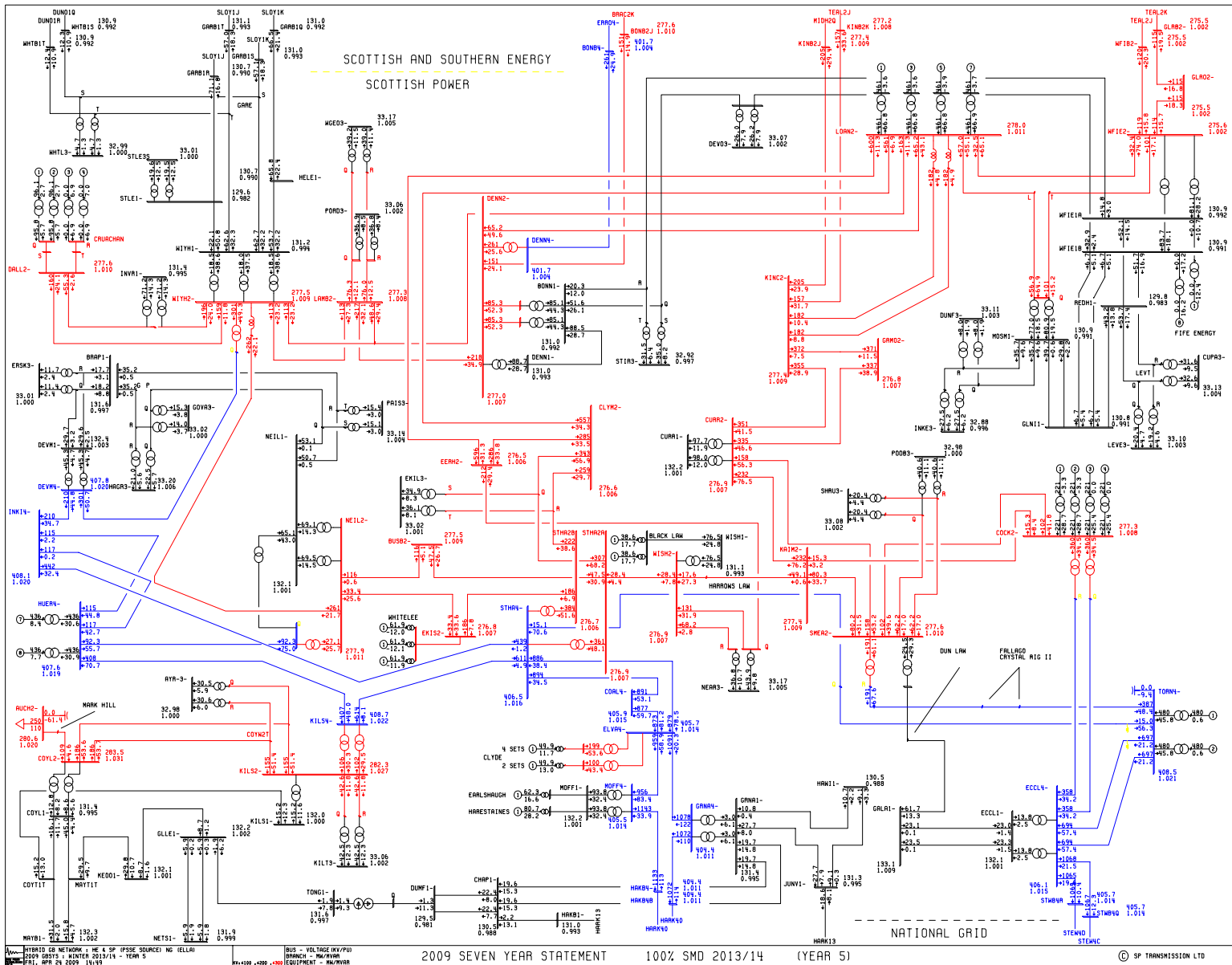
2009 SEVEN YEAR STATEMENT

100% SMD 2011/12

(YEAR 3)

© SP TRANSMISSION LTD





SCOTTISH AND SOUTHERN ENERGY  
SCOTTISH POWER

NATIONAL GRID

HYBRID DB NETWORK - HE 4 SP (PSE SOURCE) NO ILLER  
1000 BOND - WINTER 2013/14 - YEAR 5  
FRI, APR 29 2009 14:49

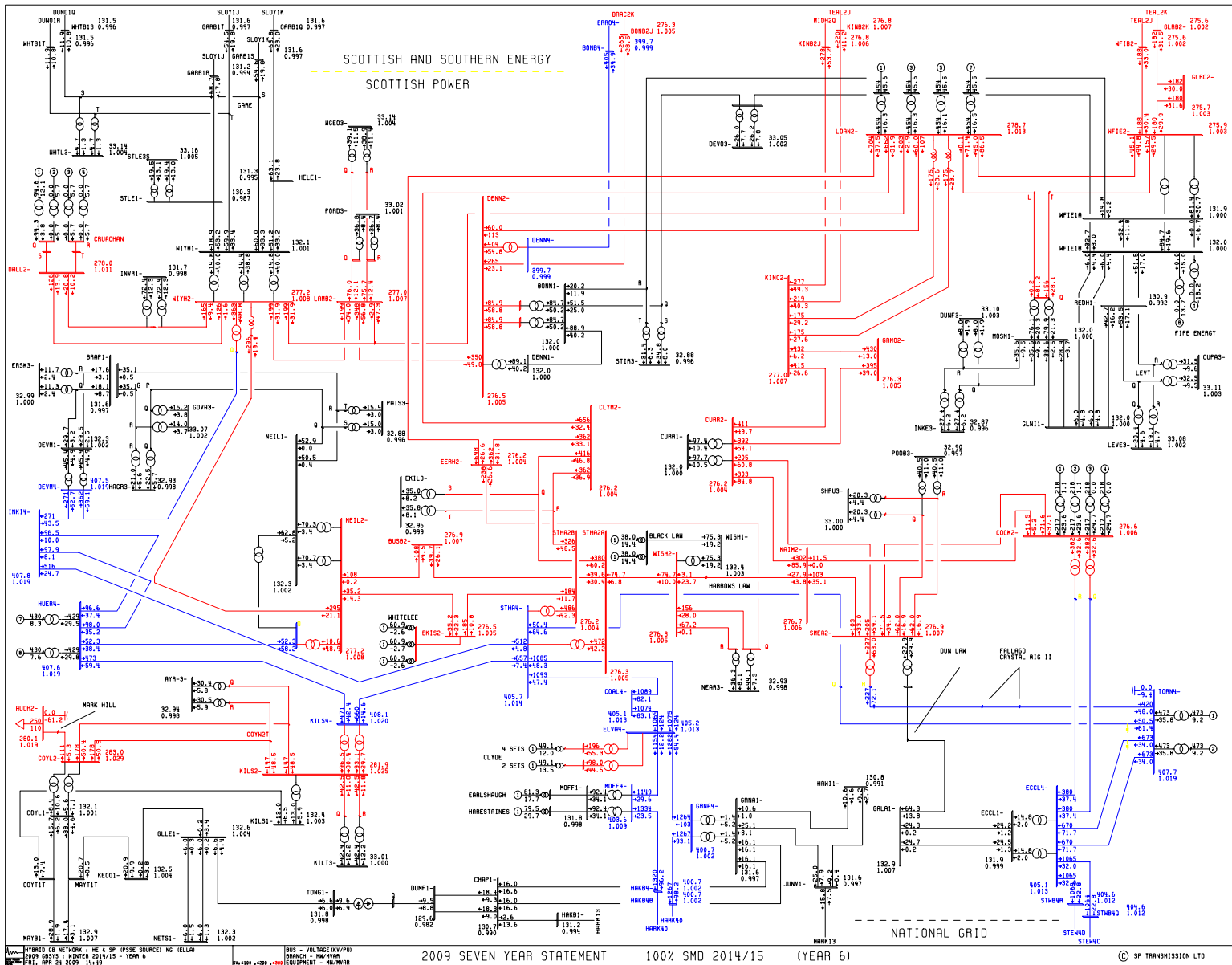
BUS - VOLTAGE (KV/PV)  
BRANCH - MW/MVAR  
EQUIPMENT - MW/MVAR

2009 SEVEN YEAR STATEMENT

100% SMD 2013/14

(YEAR 5)

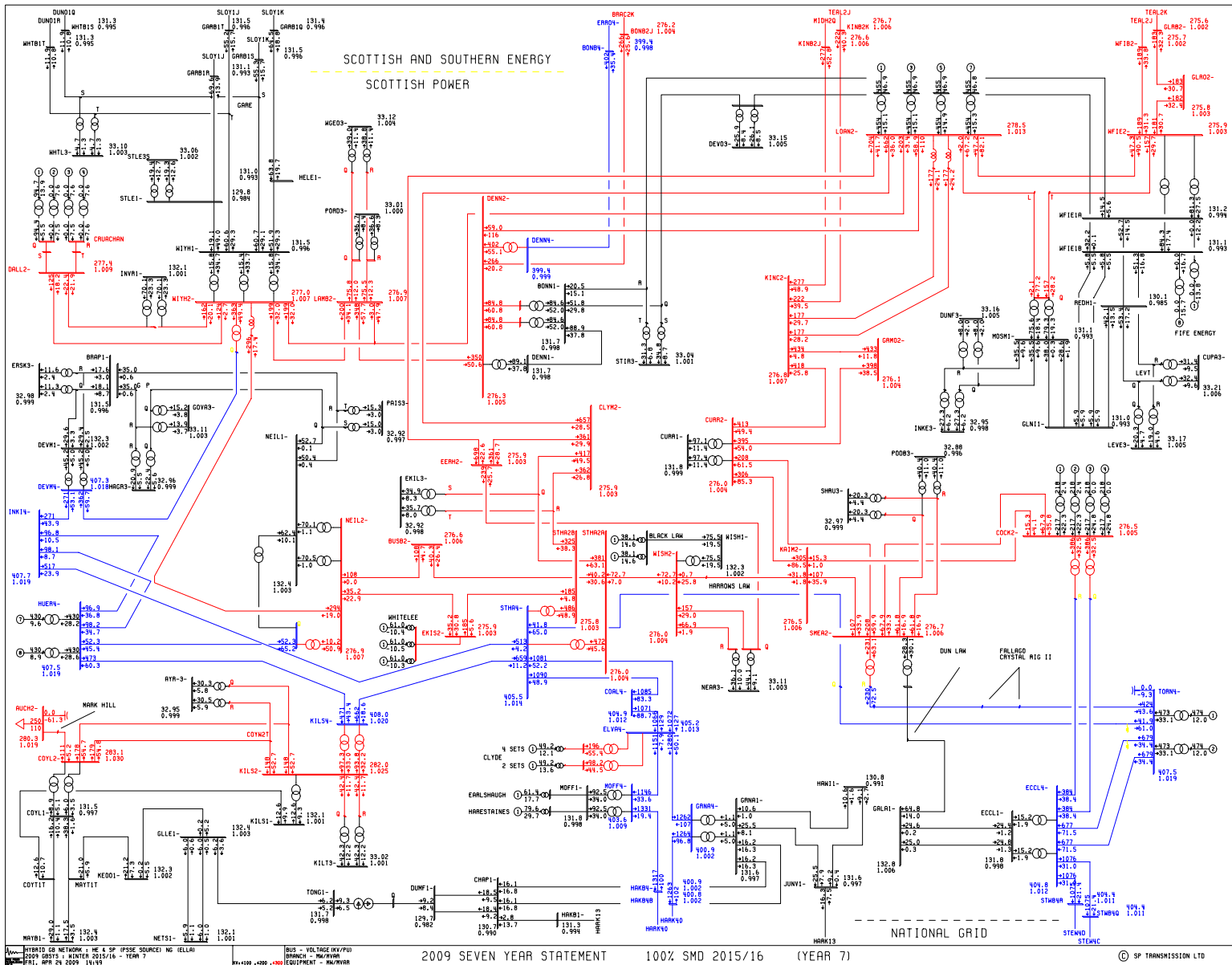
© SP TRANSMISSION LTD



HUBBARD DB NETWORK - HE 4 SP (PSE SOURCE) NO ICLLRI  
 1009 DB01 - HUBBARD DB015 - YEAR 6  
 FRI, APR 24 2009 14:19

BUS - VOLTAGE (KV/PV)  
 BRANCH - NM/NV/R  
 EQUIPMENT - NM/NV/R

2009 SEVEN YEAR STATEMENT    100% SMD 2014/15    (YEAR 6)  
 © SP TRANSMISSION LTD



NETWORK DB NETWORK: HE 4 SP (PSE SOURCE) NO ICLLRI  
 1009 0001 - NUMBER 2015/16 - YEAR 7  
 FRI, APR 24 2009 14:49

BUS - VOLTAGE (KV/PV)  
 BRANCH - MV/MVAR  
 EQUIPMENT - MV/MVAR

2009 SEVEN YEAR STATEMENT

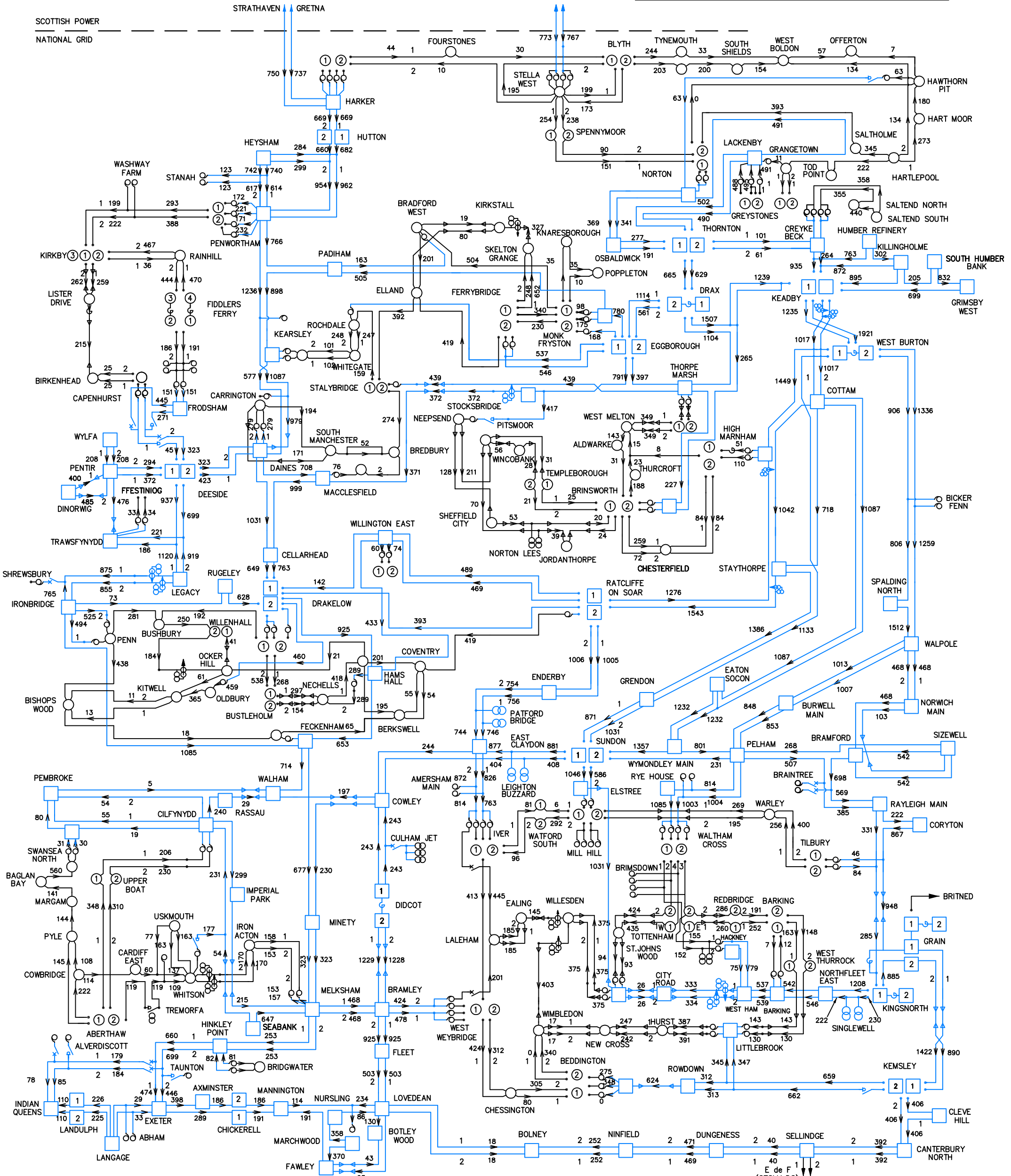
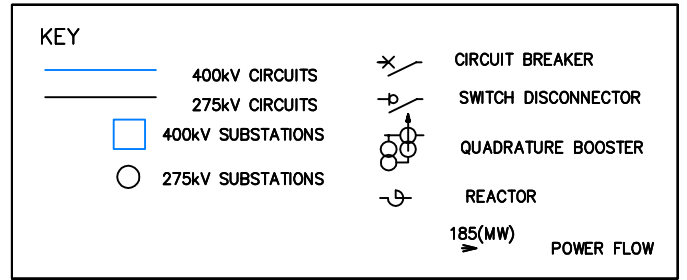
100% SMD 2015/16

(YEAR 7)

NATIONAL GRID

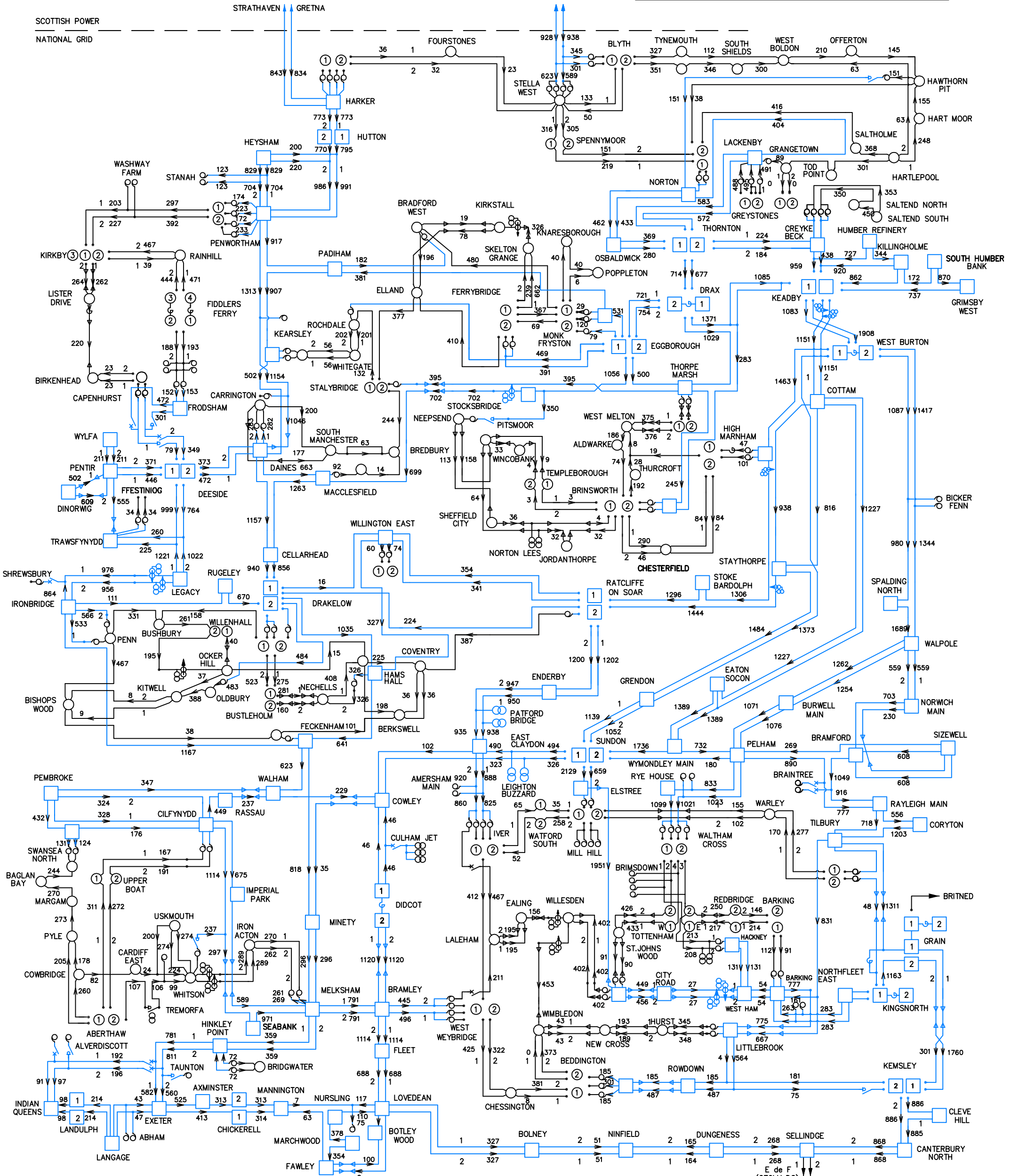
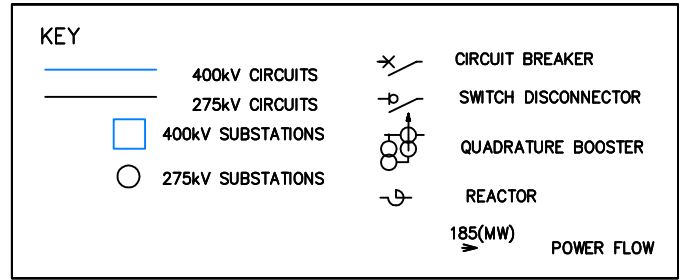
© SP TRANSMISSION LTD

GB SYS FIG C.3.1 NGET FORECAST POWER FLOWS AT WINTER PEAK - 2009/10

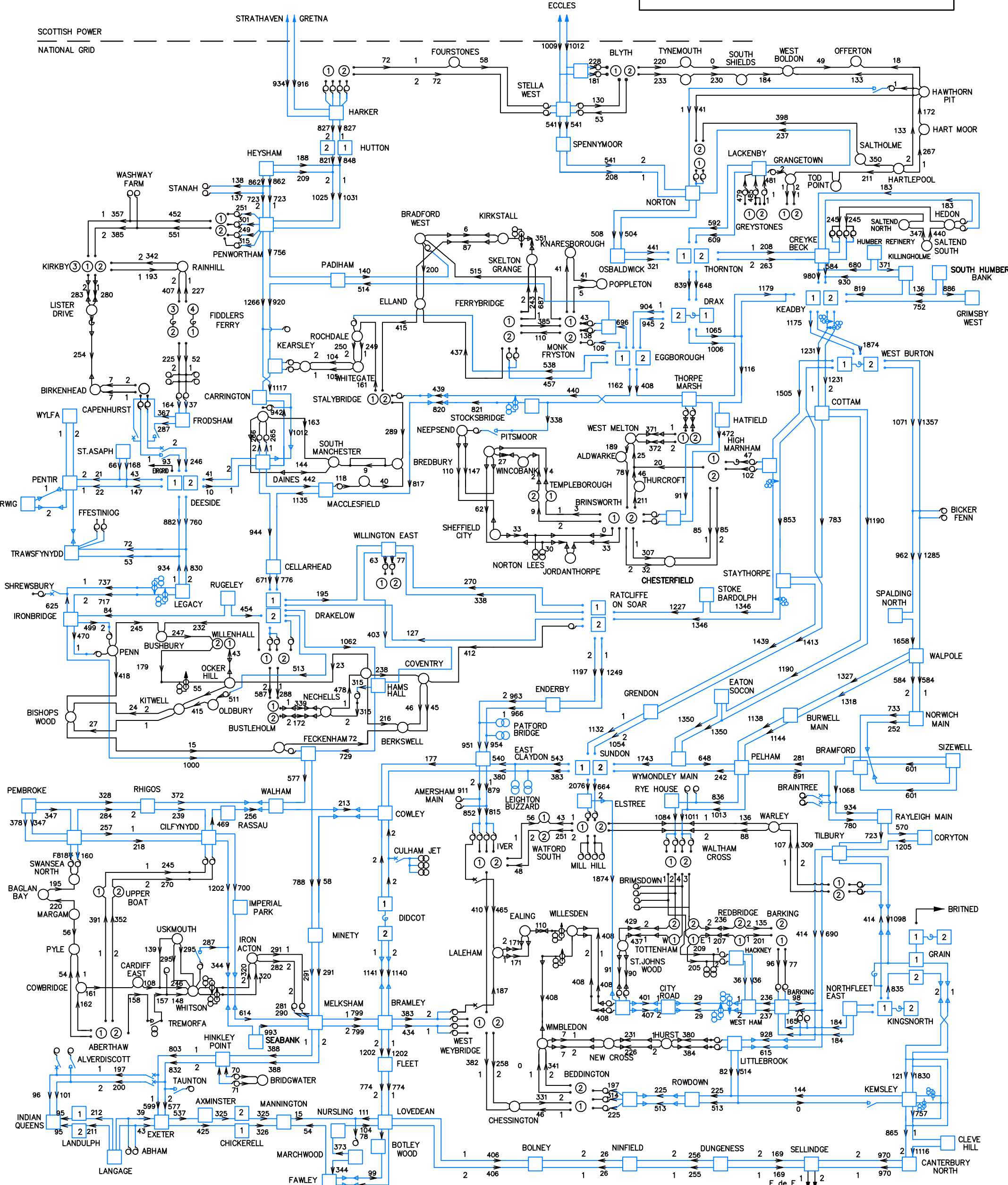
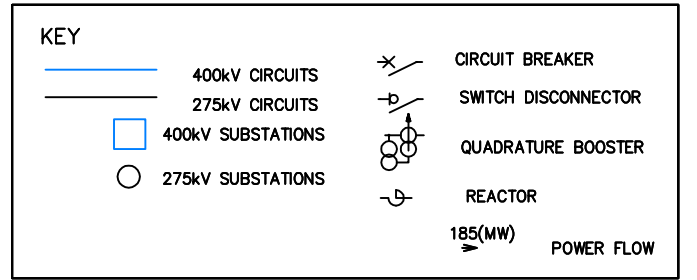




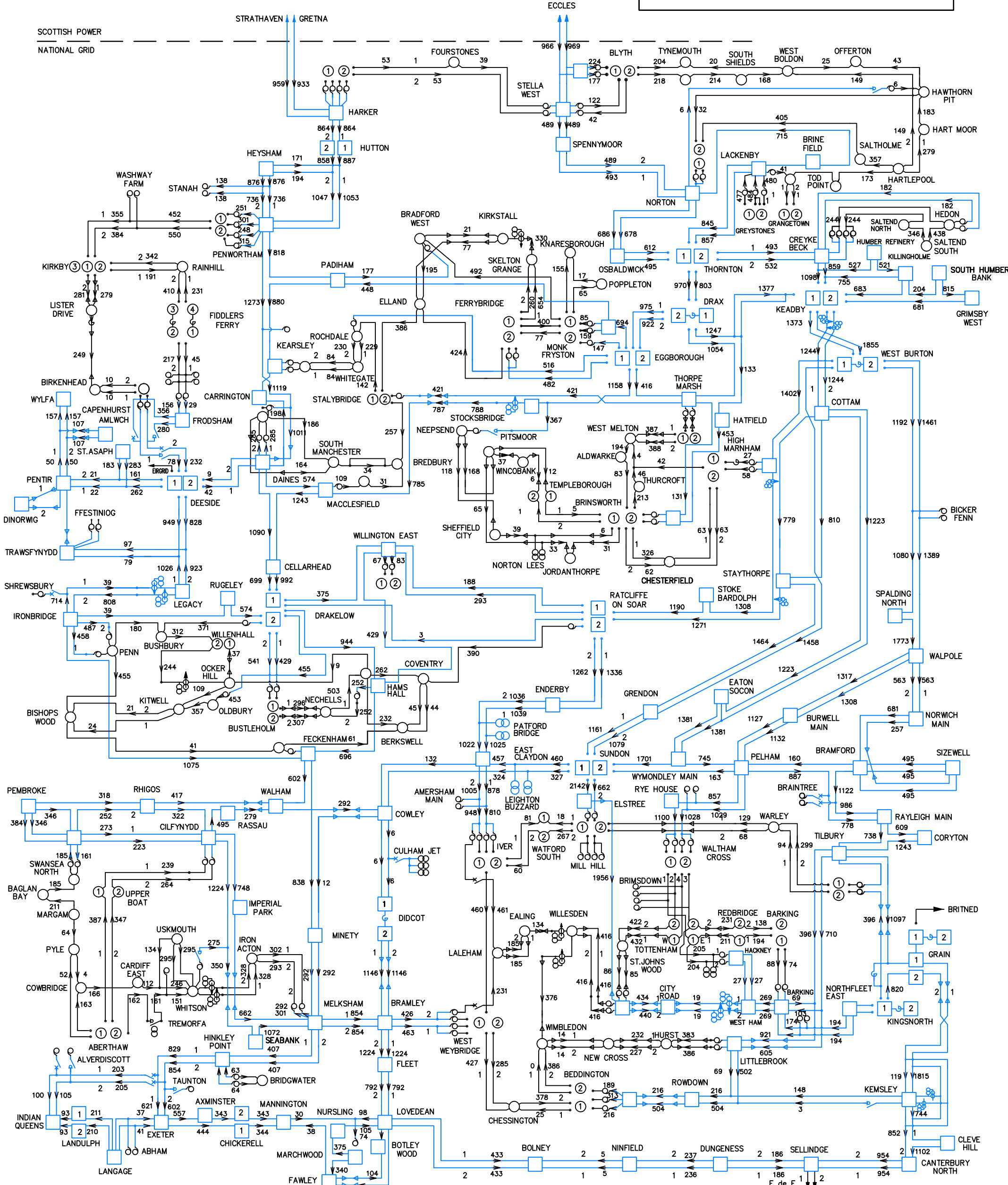
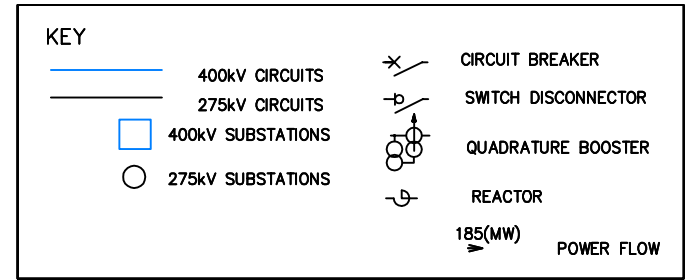
GB SYS FIG C.3.2 NGET FORECAST POWER FLOWS AT WINTER PEAK - 2010/11



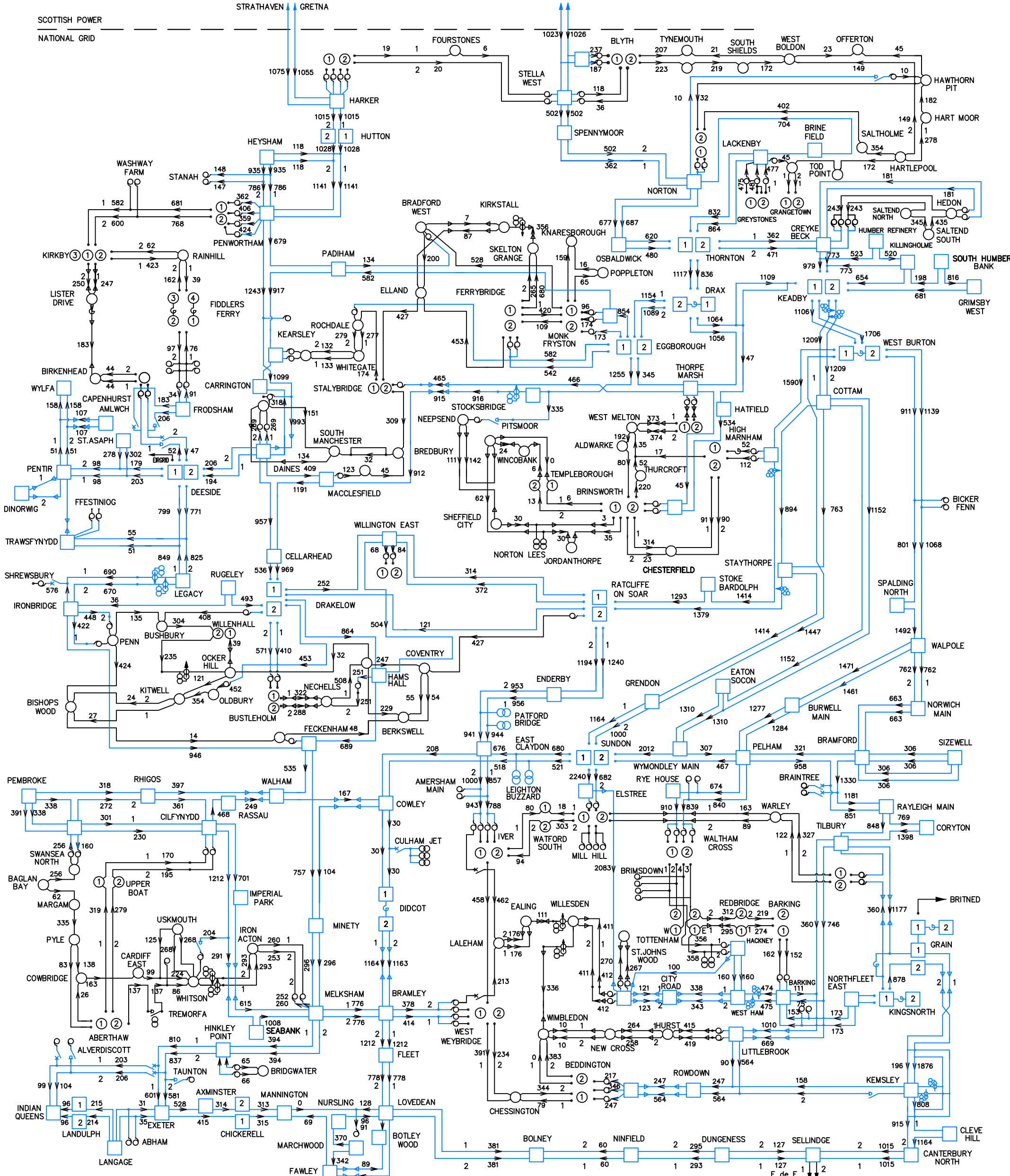
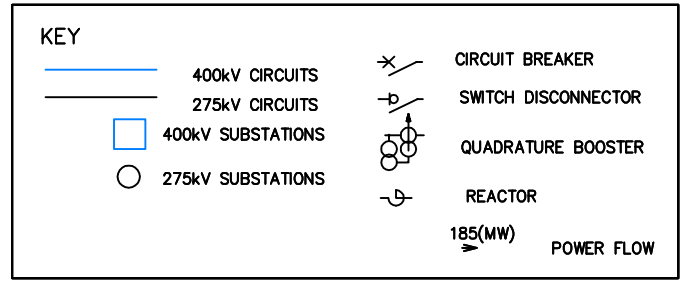
GB SYS FIG C.3.3 NGET FORECAST POWER FLOWS AT WINTER PEAK - 2011/12



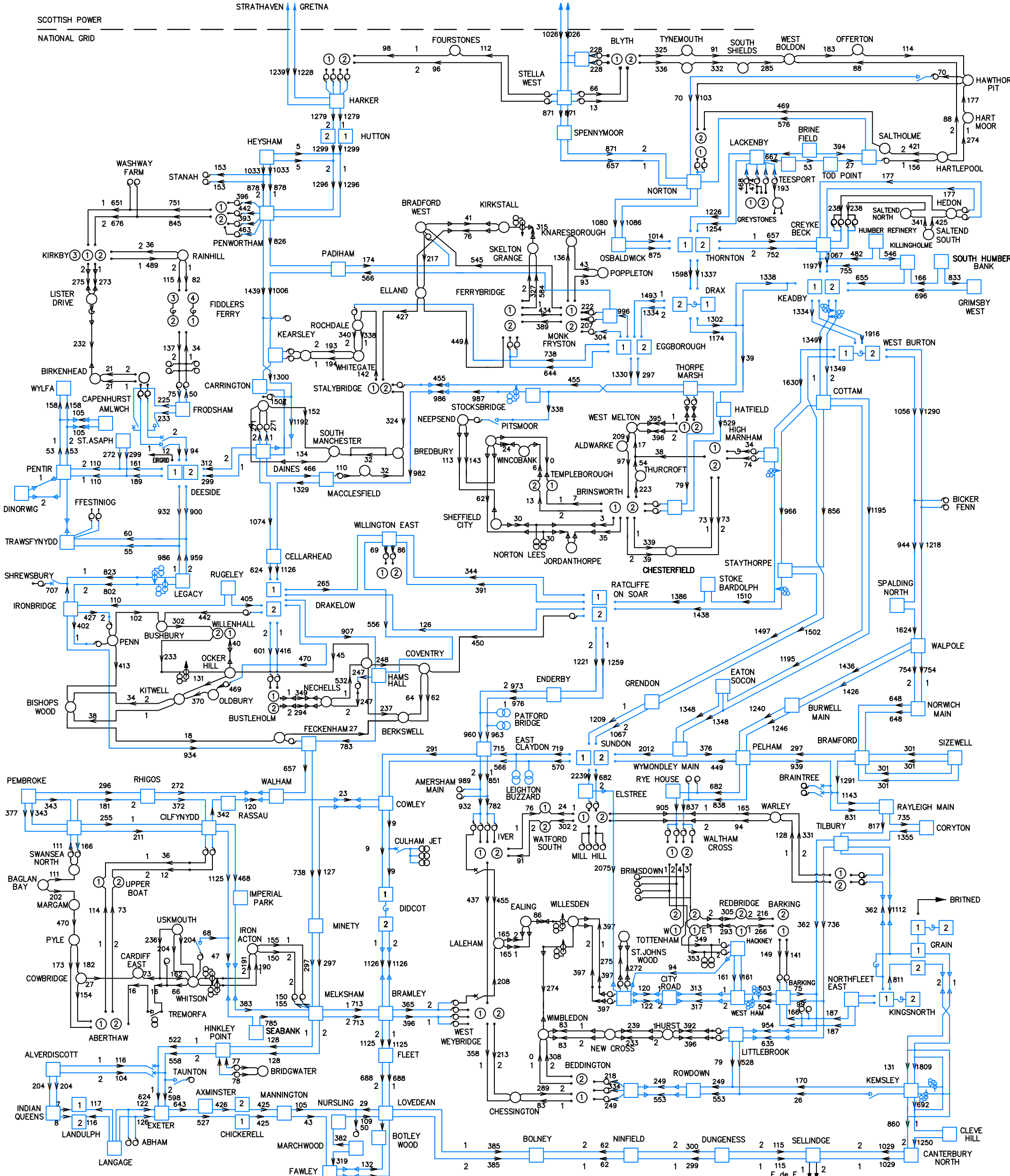
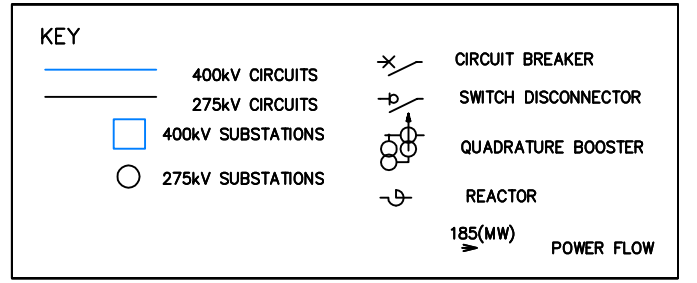
GB SYS FIG C.3.4 NGET FORECAST POWER FLOWS AT WINTER PEAK - 2012/13



GB SYS FIG C.3.5 NGET FORECAST POWER FLOWS AT WINTER PEAK - 2013/14



GB SYS FIG C.3.6 NGET FORECAST POWER FLOWS AT WINTER PEAK - 2014/15



GB SYS FIG C.3.7 NGET FORECAST POWER FLOWS AT WINTER PEAK - 2015/16

