

Operational and Cost Update



Sam Matthews, Balancing Services Manager
Electricity Operational Forum – February 2012

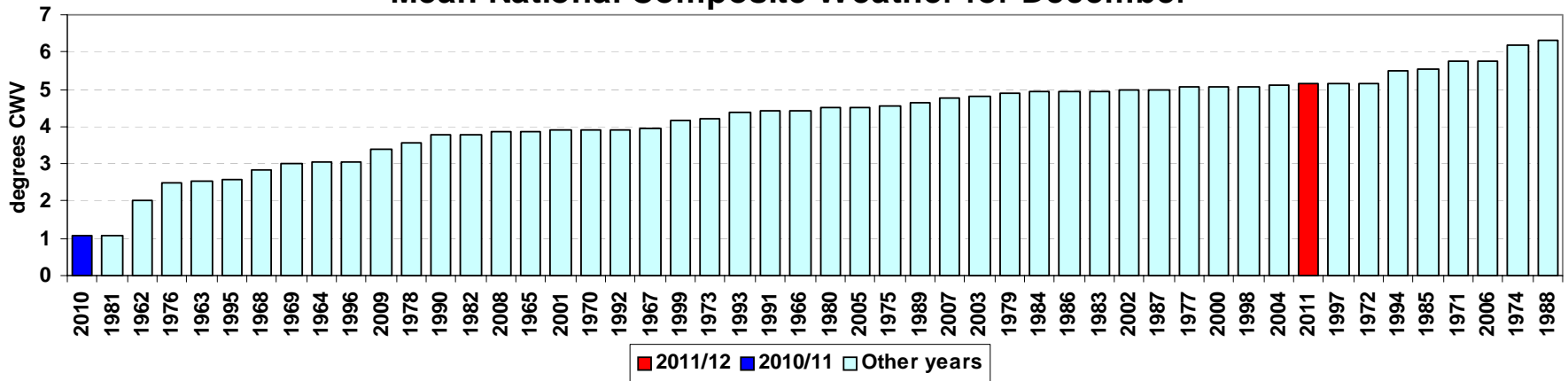
Agenda

- Weather
- Minimum Zero Times (MZT) of Generation in GB
- Interconnector flows to Europe across Winter 2012
- Wind Update
- Cost Update

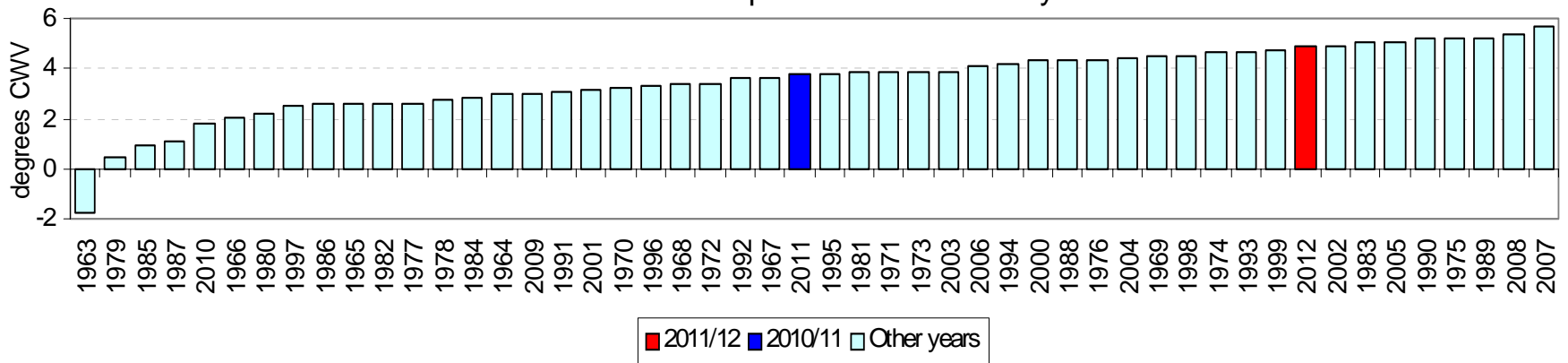
Weather for Dec 2011 and Jan 2012

■ Continuing mild weather across Dec / Jan

Mean National Composite Weather for December

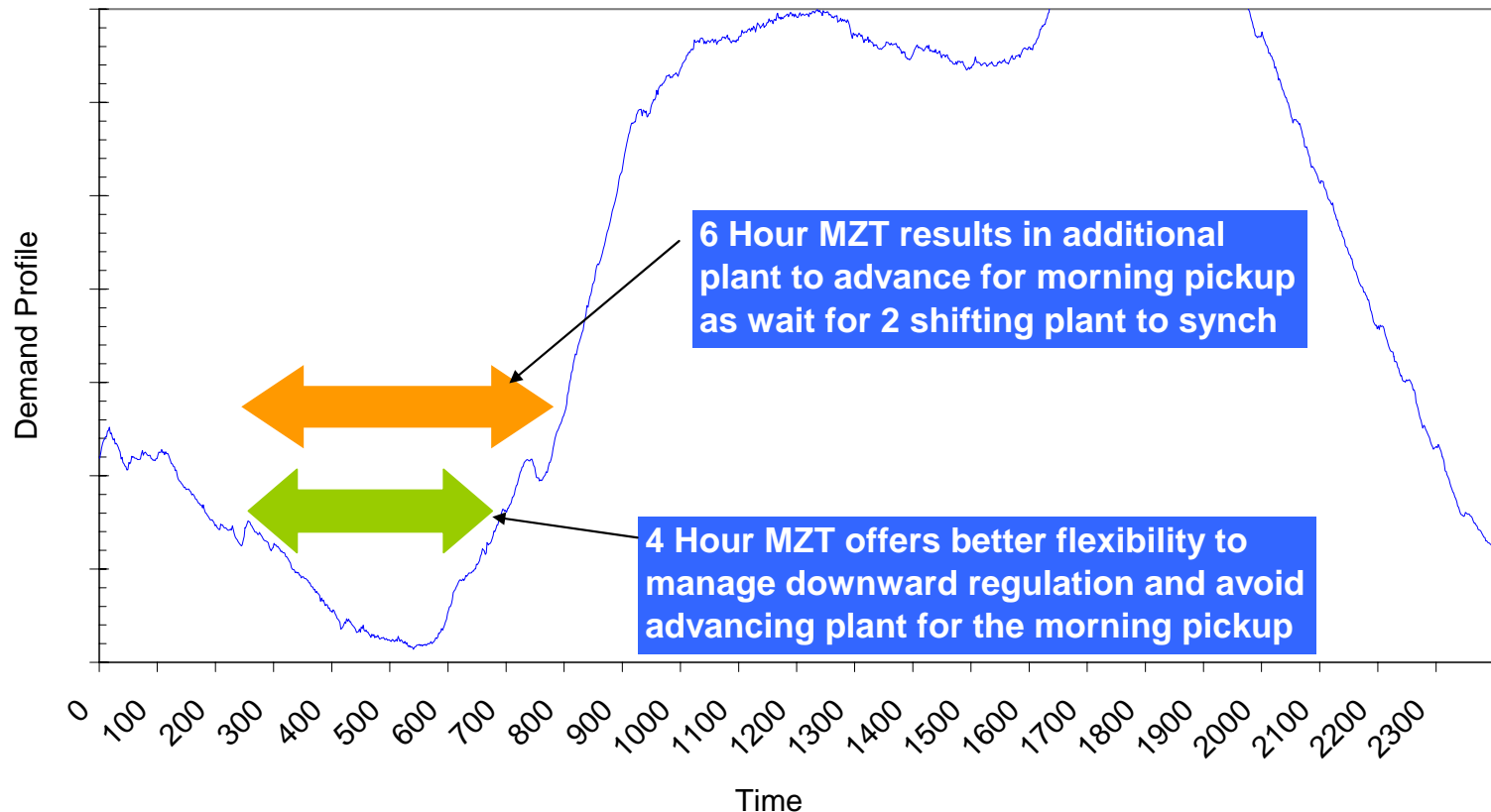


Mean National Composite Weather for January



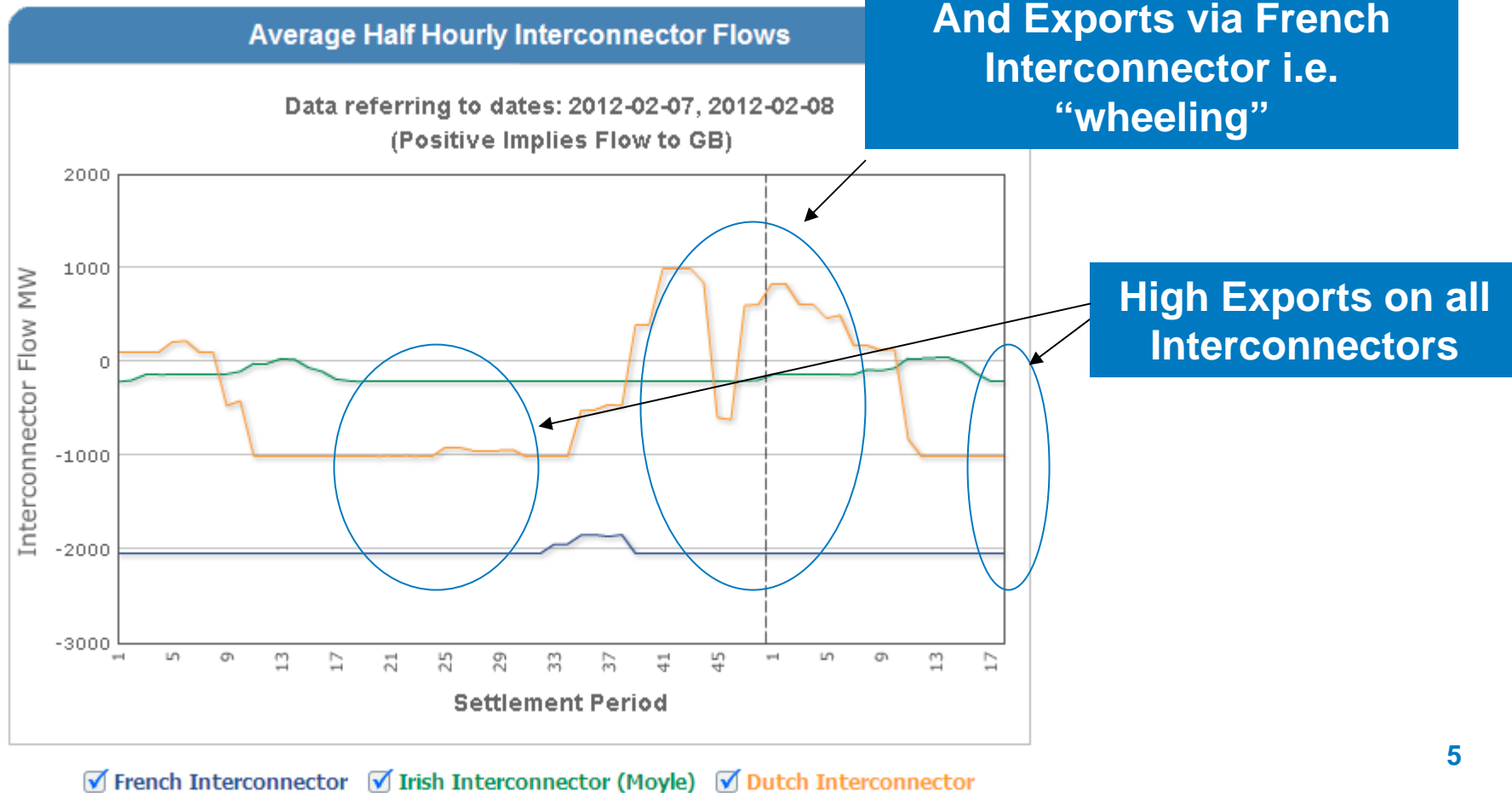
Generation Minimum Zero Times

- Reduction in 4 hour machines to 2-shift overnight being experienced at times (particularly in Dec)



Interconnectors

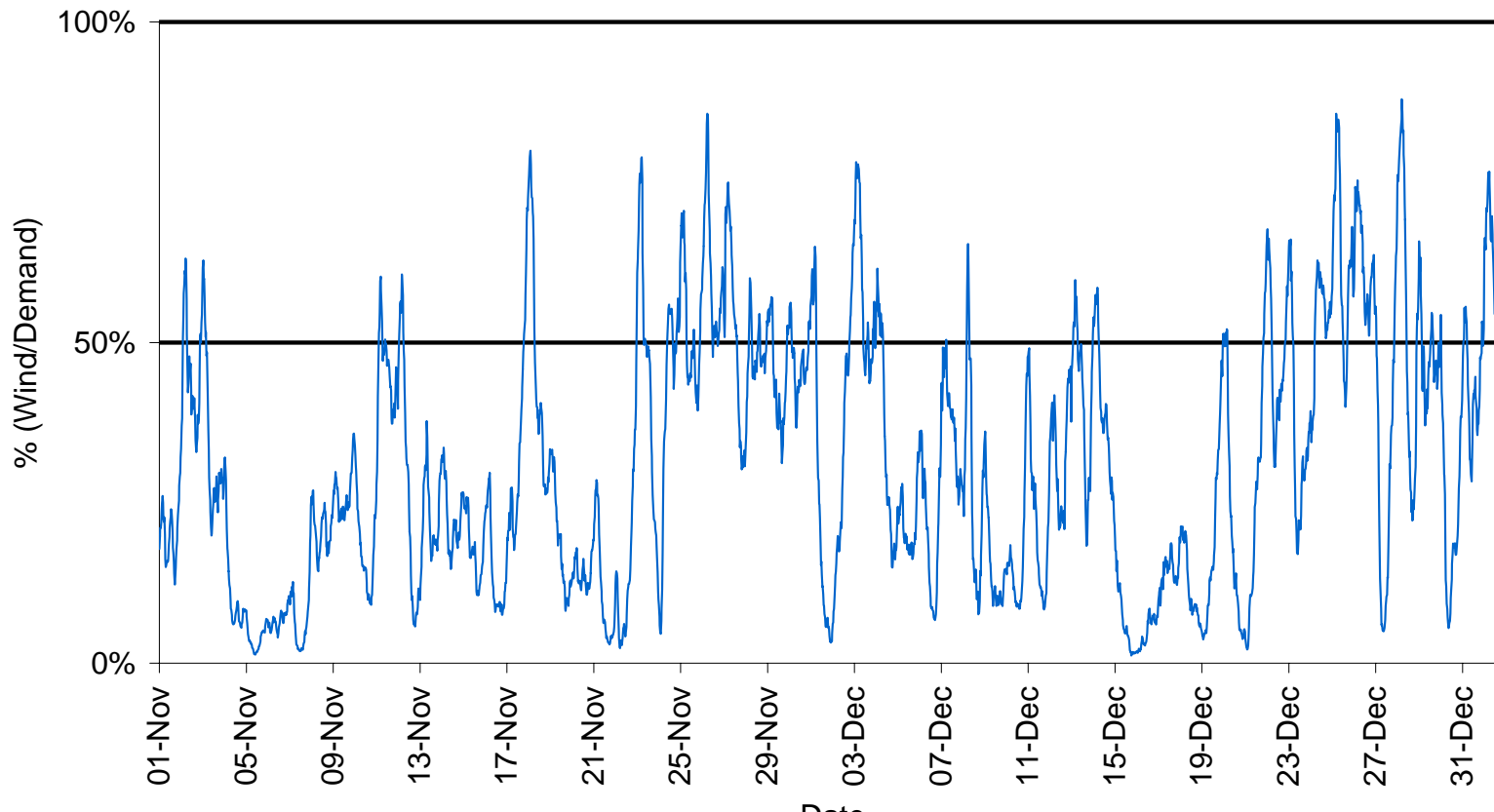
- Have observed high exports at GB peak demands and also “wheeling”



Wind

- Have operated “SCOTEX” above 3GW transfers this winter to maximise renewable generation

Wind Generation in Scotland as % of Scottish Demand Nov 2011 to Dec 2011

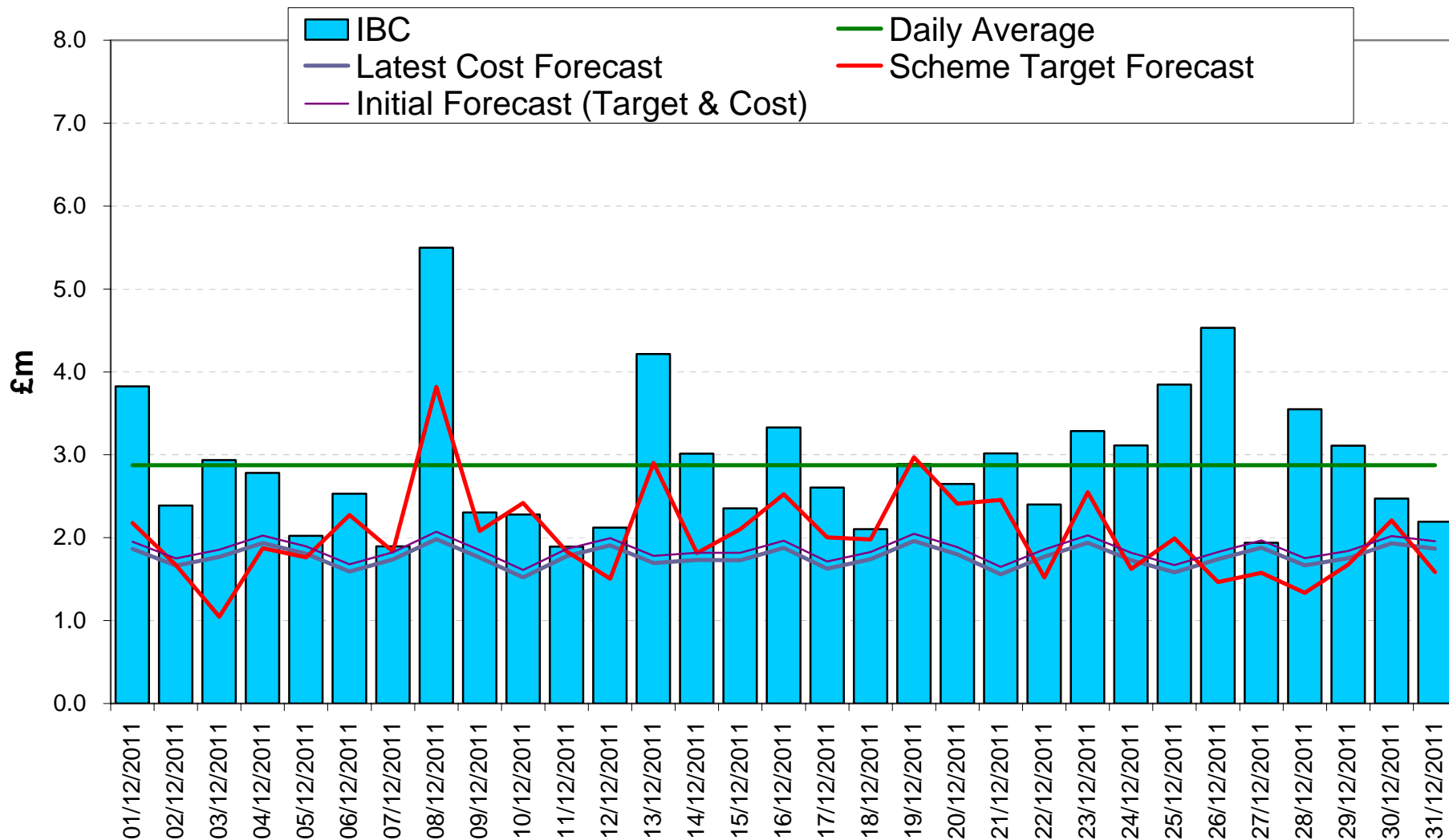


— Total Scottish Wind (estimate made of non metered wind) as a % of Scottish Demand (not including Pumped storage or Interconnector flows)

System Operator Cost Update

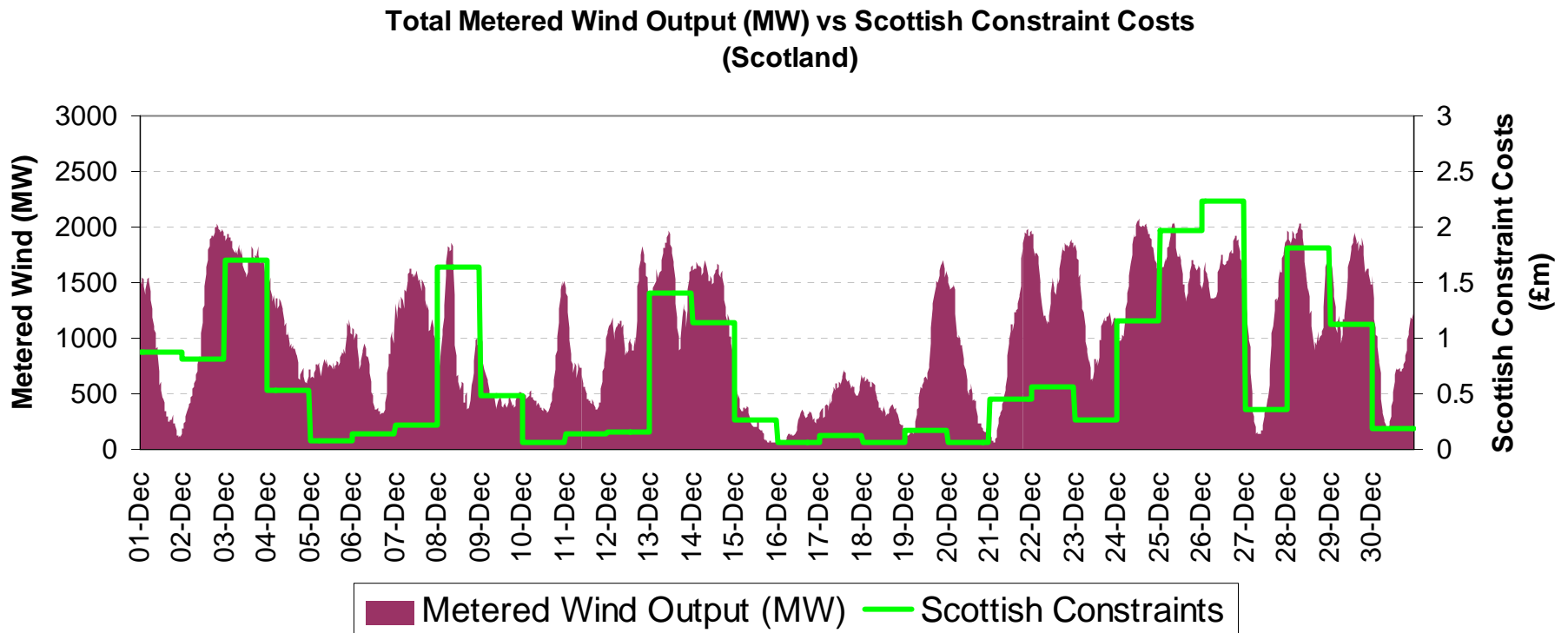


Total Incentivised Balancing Cost (IBC) for December 2011



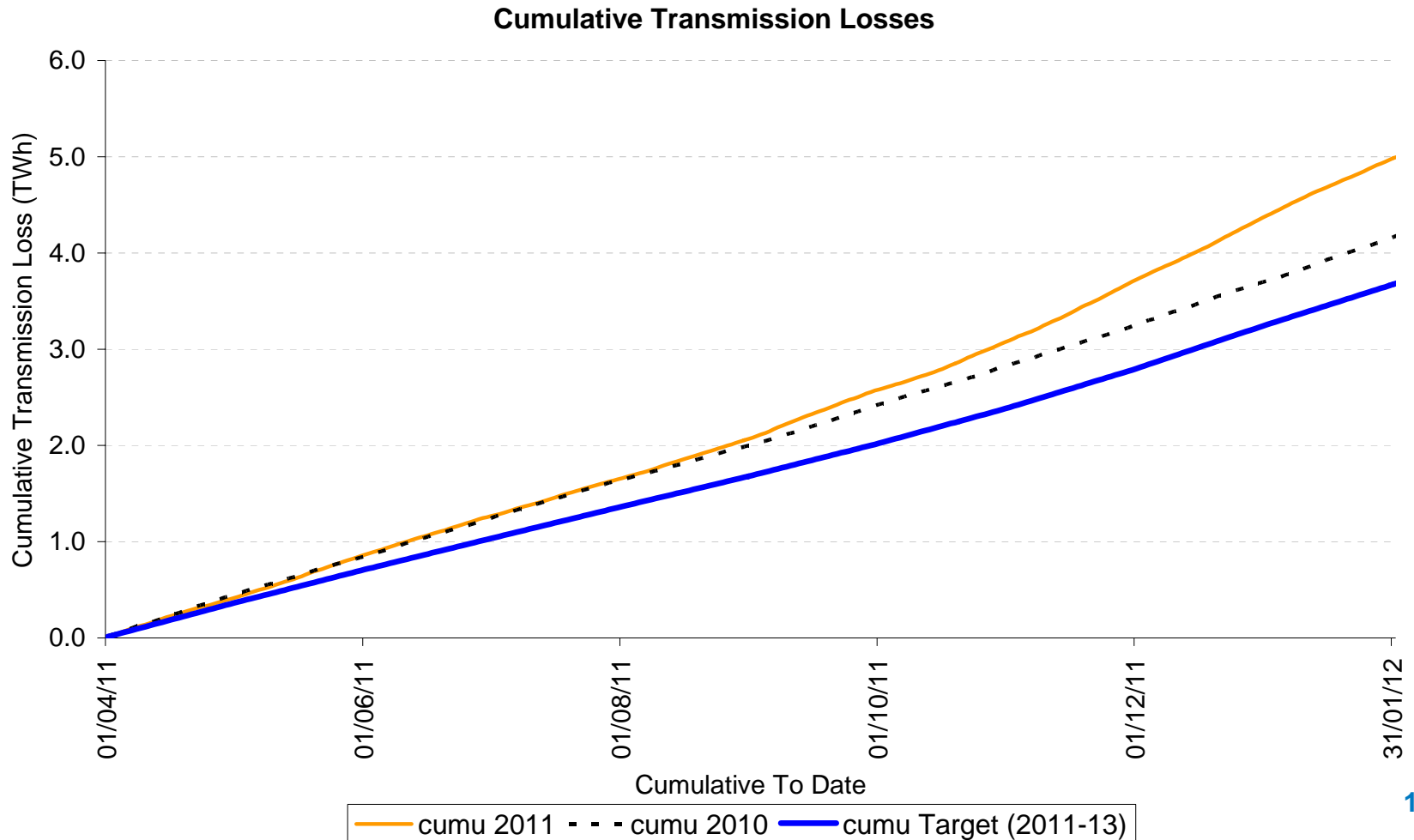
Cost Update – Scottish Constraints

- Correlation with of constraints to wind output



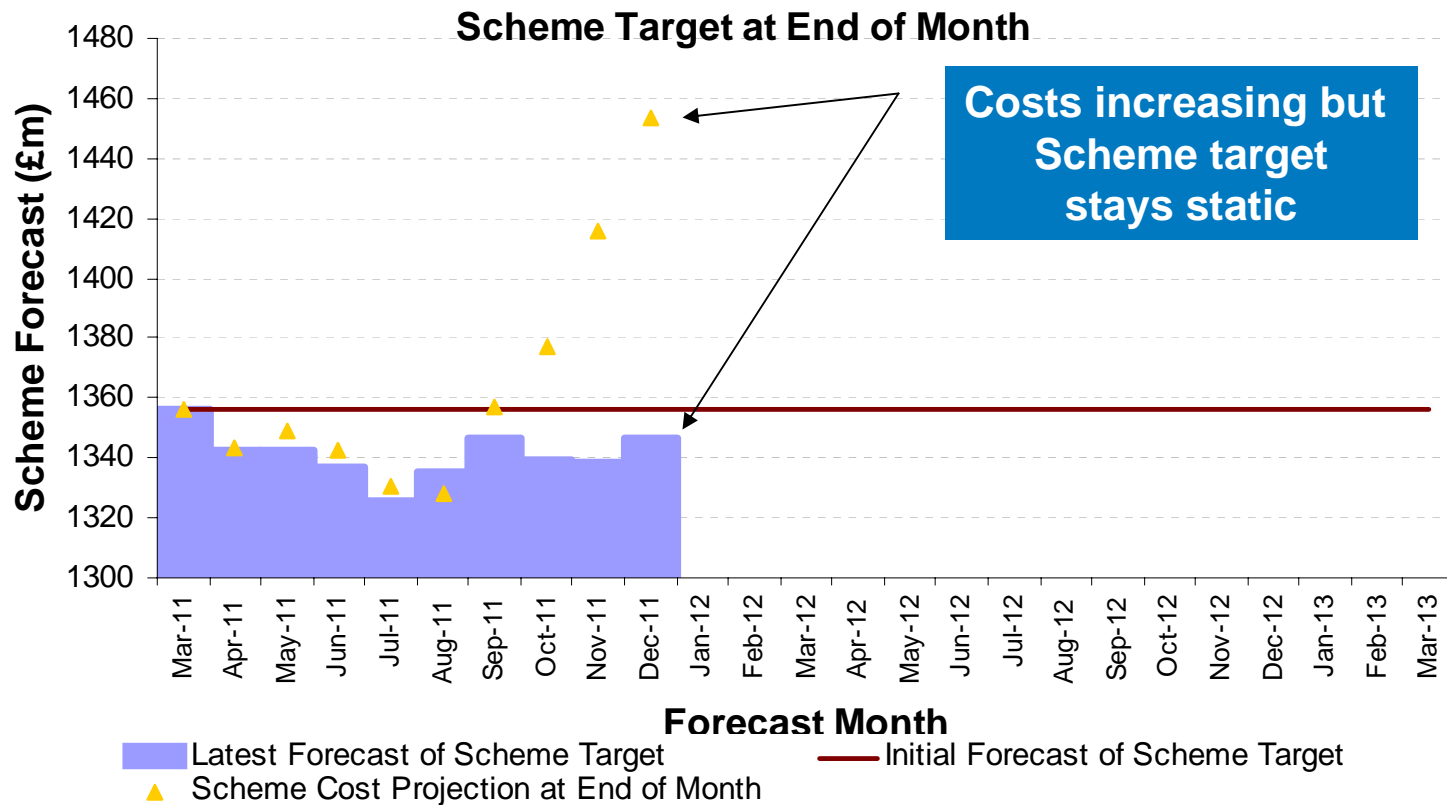
Cost Update – Transmission Losses

- Higher North – South flows increases losses



Scheme Target vs. Costs Overview

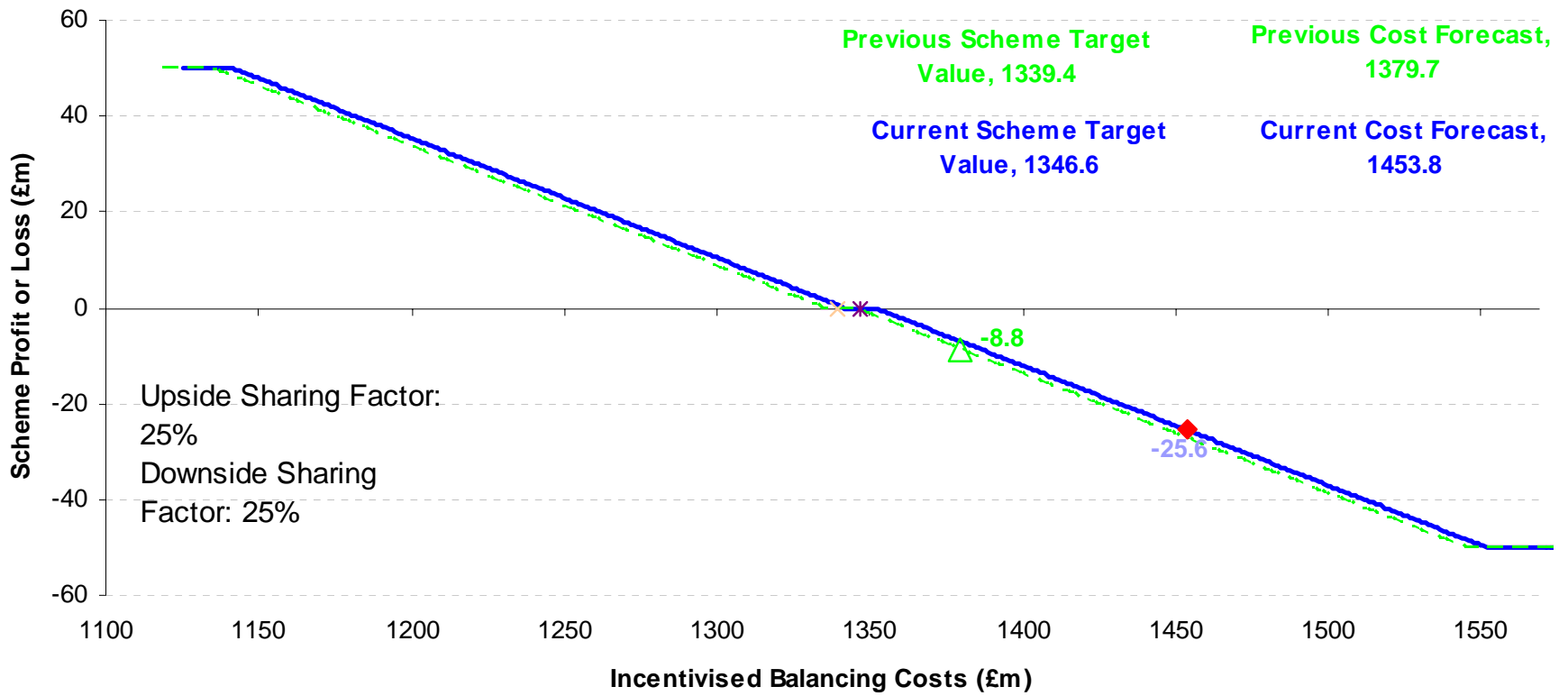
- Scheme target not increasing to cover for events outside of NGET control



BSIS Update – End December

■ Scheme losses continue to increase

BSIS 2011-13

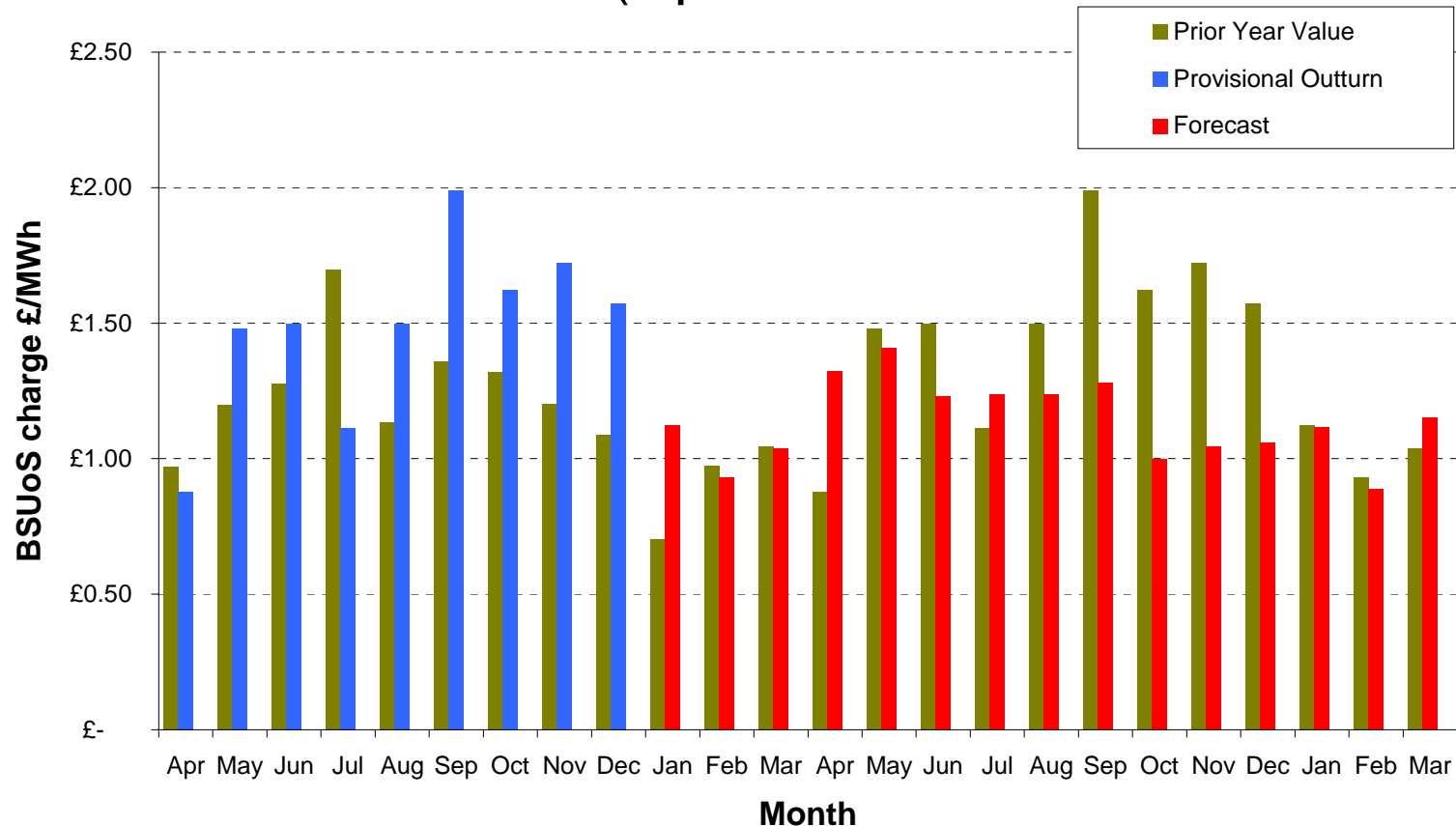


Analysis of main drivers for divergence in costs vs. scheme target

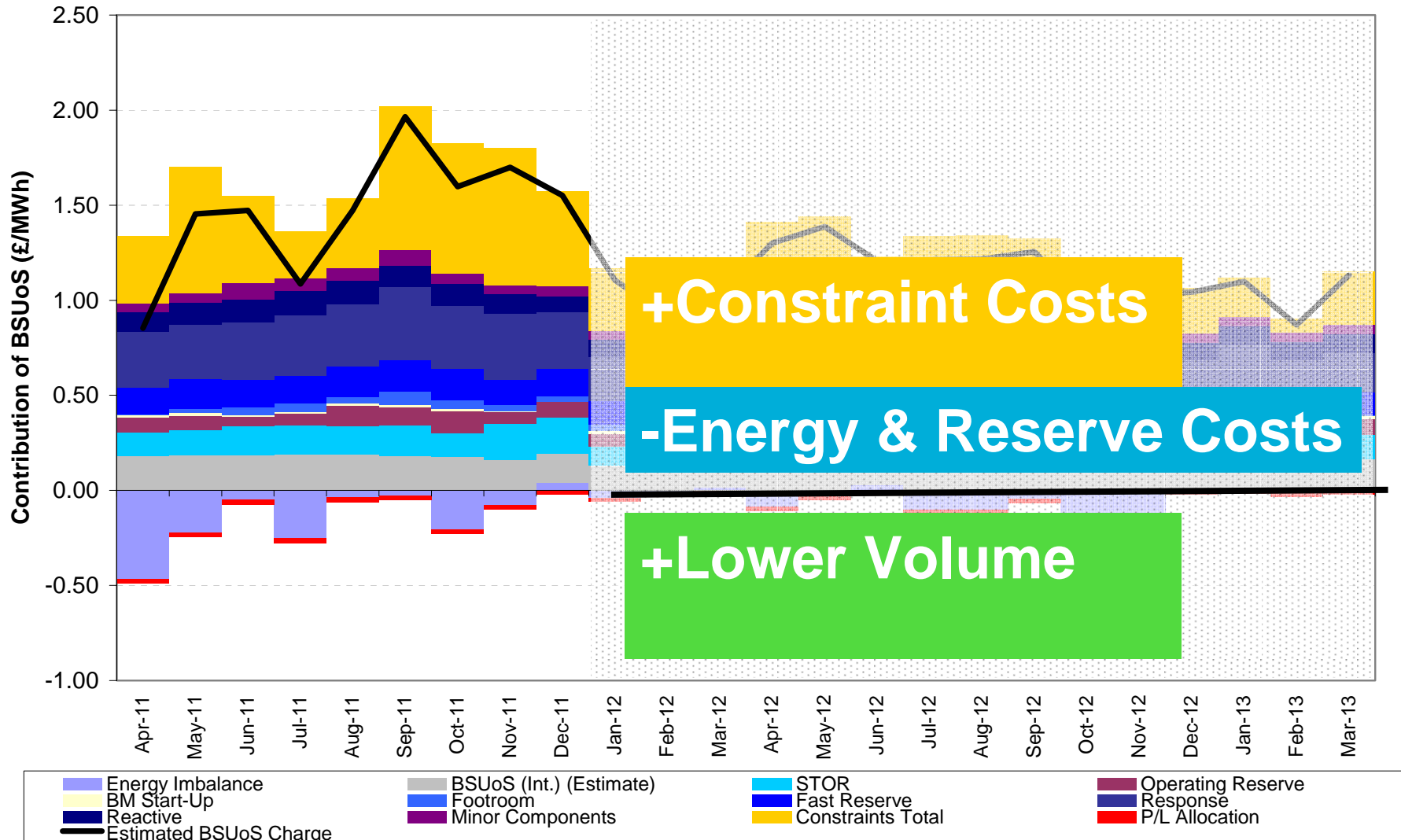
- Main Drivers identified
 - Long term Moyle Interconnector fault outage not modelled in Plexos
 - Plexos modelling of generator running patterns in Scotland not what is experienced in real-time
 - Transmission Outages overrunning
 - Southern voltage control
 - Response costs – driven by unplanned Transmission outage
 - Transmission Losses due to changing generation patterns

BSUoS Forecast

- 2011/12: £1.31/MWh (previous update = £1.26)
- 2012/13: £1.09/MWh (Updated with latest information)



Contribution to BSUoS



Q&A

samuel.matthews@uk.ngrid.com