

Fast Reserve

Market Information for Tenders for October 2013

National Grid publishes this information, in order to inform potential participants for the Fast Reserve tender round for October 2013.

Fast Reserve Availability

Our indicative requirement for Fast Reserve in October 2013 is shown on a Settlement Period basis in Figure 1. This requirement covers weekdays, Saturdays, Sundays and Bank Holidays.

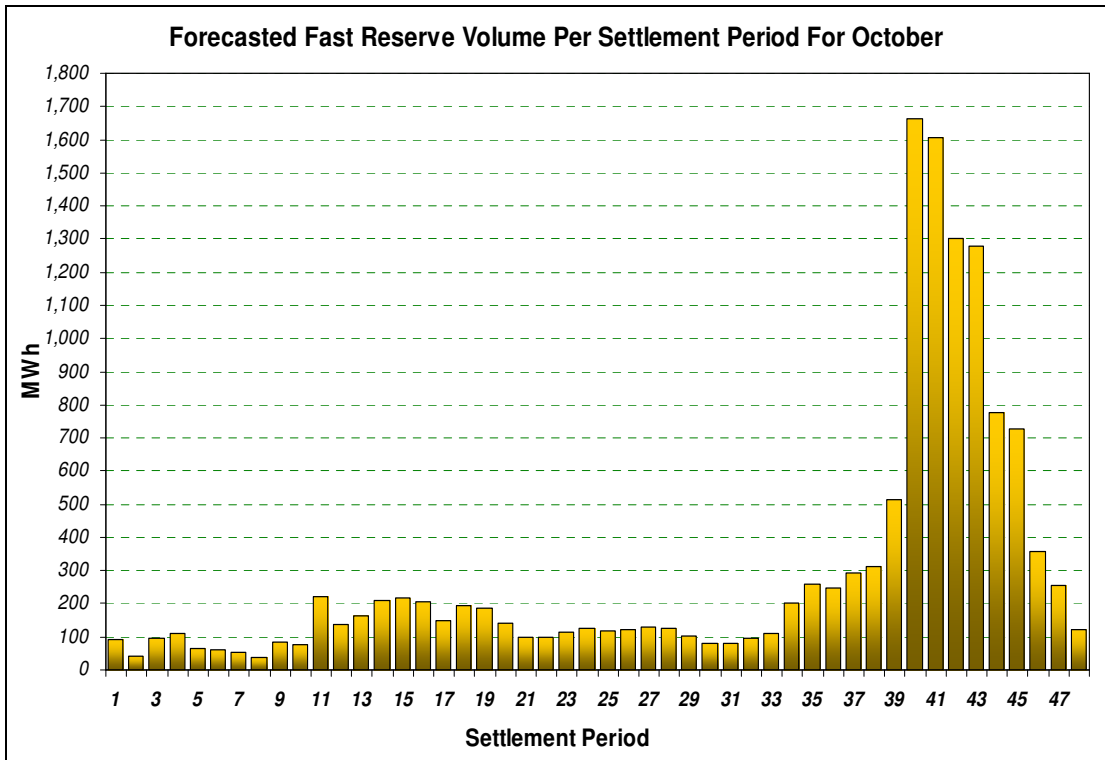


Figure 1

Figure 1 gives an indication of the times of day when Fast Reserve is most useful to National Grid. The actual amount of Fast Reserve "holding" varies from day to day, according to system conditions. In general, it might be good to have around 300 to 400MW of fast reserve service contracted during daytime period.

Fast Reserve Utilisation

The following BM information is based on the aggregate of Offers plus Bids accepted to provide Fast Reserve or an equivalent service for the last three months. Note that the data for August 2013 contains both out-turn and forecast.

Figure 2 shows the daily utilisation of Fast Reserve in the BM.

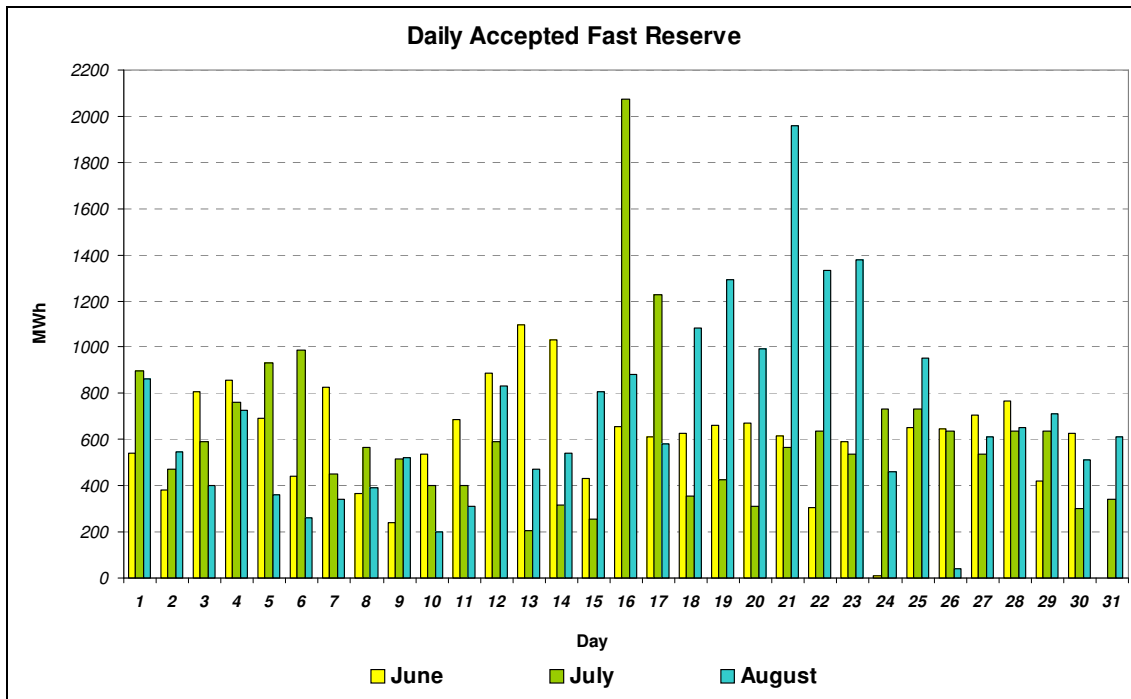


Figure 2

Figure 3 represents this data as total utilisation by Settlement Period across each month. This shows the daily profile of Fast Reserve utilisation.

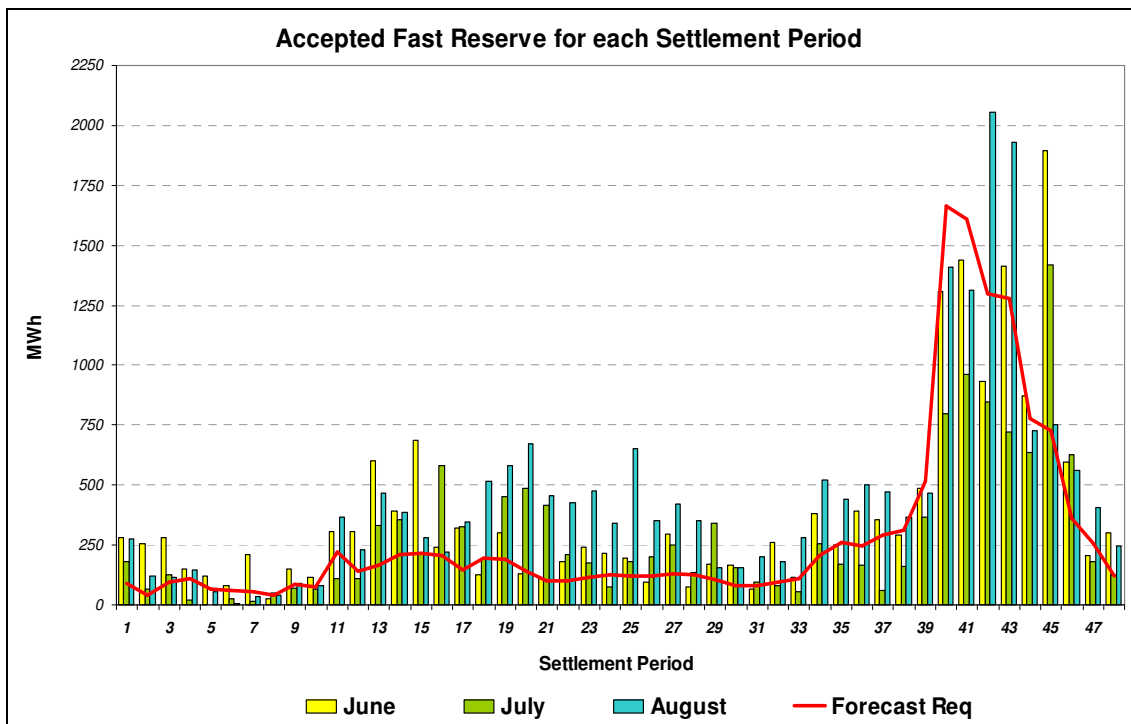


Figure 3

Figure 4 represents the same historical data, as an average utilisation price per Settlement Period for each month.

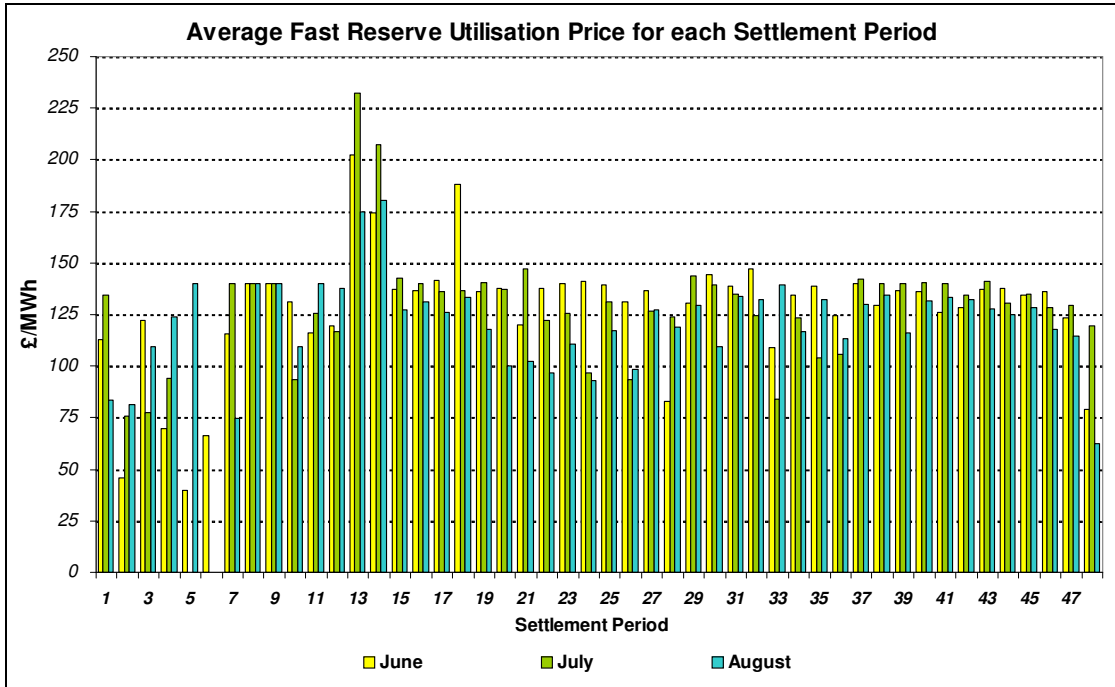


Figure 4

Finally, the same data is used in Figure 5, below, to show the profile of total Fast Reserve utilisation expenditure per Settlement Period for each month.

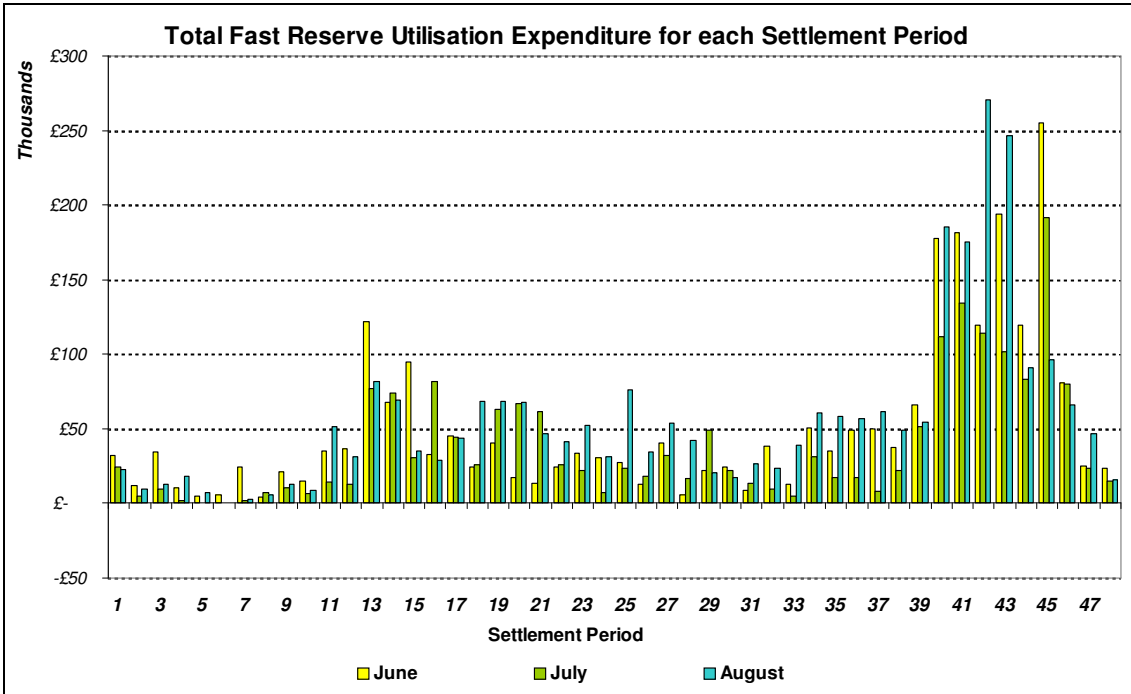


Figure 5

The total volumes of Fast Reserve utilisation of 13.06 GWh for July 2013 and 16.52 GWh for August 2013, broken down into price bands are as follows:

July 2013	Price band (£/MWh)	Volume (MWh)	Average Price (£/MWh)	Cost (£m)
OFFERS	2000 to 99999	0	n/a	n/a
	1000 to 2000	0	n/a	n/a
	500 to 1000	0	n/a	n/a
	300 to 500	0	n/a	n/a
	150 to 300	1,817	184	0.33
	0 to 150	10,973	139	1.52
Total Offers		12.79 GWh		£1.86m
BIDS	0 to -150	-264	-57	0.01
	-150 to -300	-8	-234	0.00
	-300 to -500	0	n/a	n/a
	--500 to -1000	0	n/a	n/a
	-1000 to -2000	0	n/a	n/a
	-2000 to -99999	0	n/a	n/a
Total Bids		-0.27 GWh		£0.02m
Total (Offers + Bids)		13.06 GWh		£1.87m

August 2013	Price band (£/MWh)	Volume (MWh)	Average Price (£/MWh)	Cost (£m)
OFFERS	2000 to 99999	0	n/a	n/a
	1000 to 2000	0	n/a	n/a
	500 to 1000	14	600	0.01
	300 to 500	0	n/a	n/a
	150 to 300	1,740	187	0.33
	0 to 150	14,307	137	1.96
Total Offers		16.06 GWh		£2.3m
BIDS	0 to -150	-461	-89	0.04
	-150 to -300	0	n/a	n/a
	-300 to -500	0	n/a	n/a
	--500 to -1000	0	n/a	n/a
	-1000 to -2000	0	n/a	n/a
	-2000 to -99999	0	n/a	n/a
Total Bids		-0.46 GWh		£0.04m
Total (Offers + Bids)		16.52 GWh		£2.34m

For the month of October 2013, single month tenders and multi-month tenders from eligible Service Providers for firm Fast Reserve should be submitted to National Grid by **Monday 2nd September 2013** (business day 1). National Grid will notify Service Providers of the outcome of the tender assessment by **Tuesday 17th September 2013** (business day 12).

Tenders should be sent by post for the attention of:

Bea Ennim
Market Operation
National Grid Electricity Transmission plc
National Grid House
Warwick Technology Park
Gallows Hill
Warwick, CV34 6DA