

Fast Reserve

Market Information for Tenders for June 2013

National Grid publishes this information, in order to inform potential participants for the Fast Reserve tender round for June 2013.

Fast Reserve Availability

Our indicative requirement for Fast Reserve in June 2013 is shown on a Settlement Period basis in Figure 1. This requirement covers weekdays, Saturdays, Sundays and Bank Holidays.

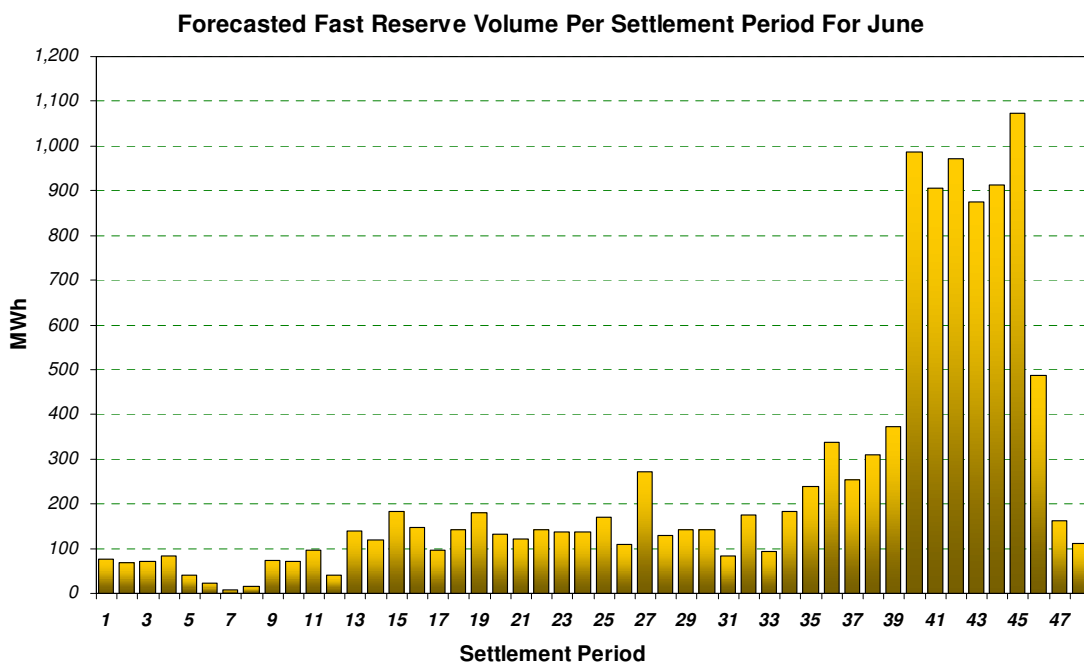


Figure 1

Figure 1 gives an indication of the times of day when Fast Reserve is most useful to National Grid. The actual amount of Fast Reserve "holding" varies from day to day, according to system conditions. In general, it might be good to have around 300 to 400MW of fast reserve service contracted during daytime period.

Fast Reserve Utilisation

The following BM information is based on the aggregate of Offers plus Bids accepted to provide Fast Reserve or an equivalent service. Note that the data for April 2013 contains both out-turn and forecast.

Figure 2 shows the daily utilisation of Fast Reserve in the BM and elsewhere during March 2013 and April 2013.

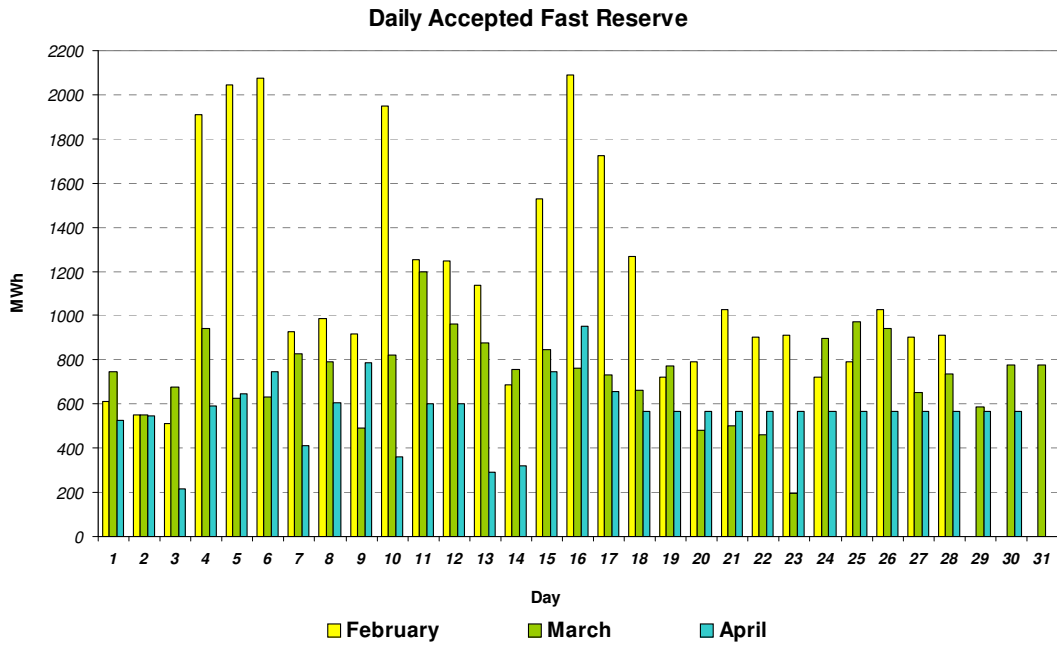


Figure 2

Figure 3 represents this data as total utilisation by Settlement Period across each month. This shows the daily profile of Fast Reserve utilisation.

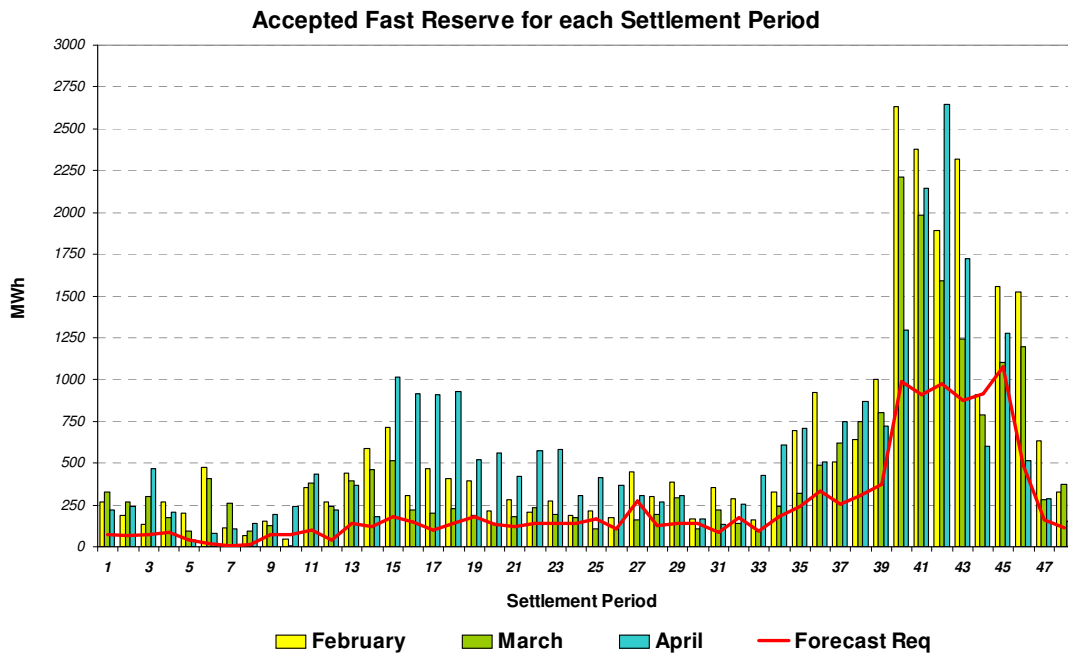


Figure 3

Figure 4 represents the same historical data, as an average utilisation price per Settlement Period for each month.

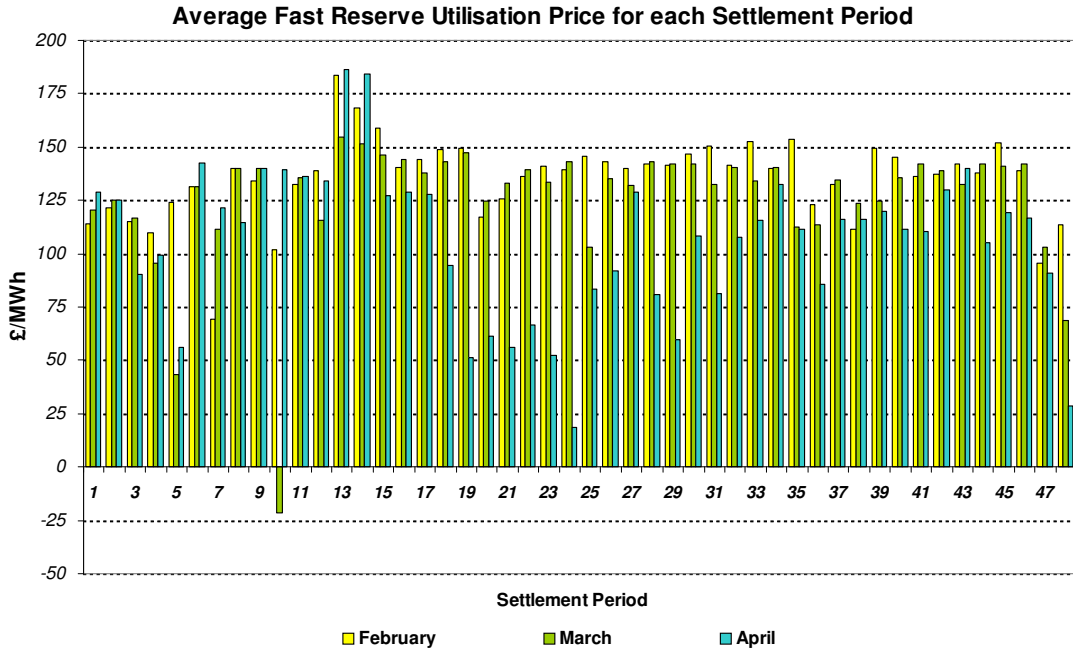


figure 4

Finally, the same data is used in Figure 5, below, to show the profile of total Fast Reserve utilisation expenditure per Settlement Period for each month.

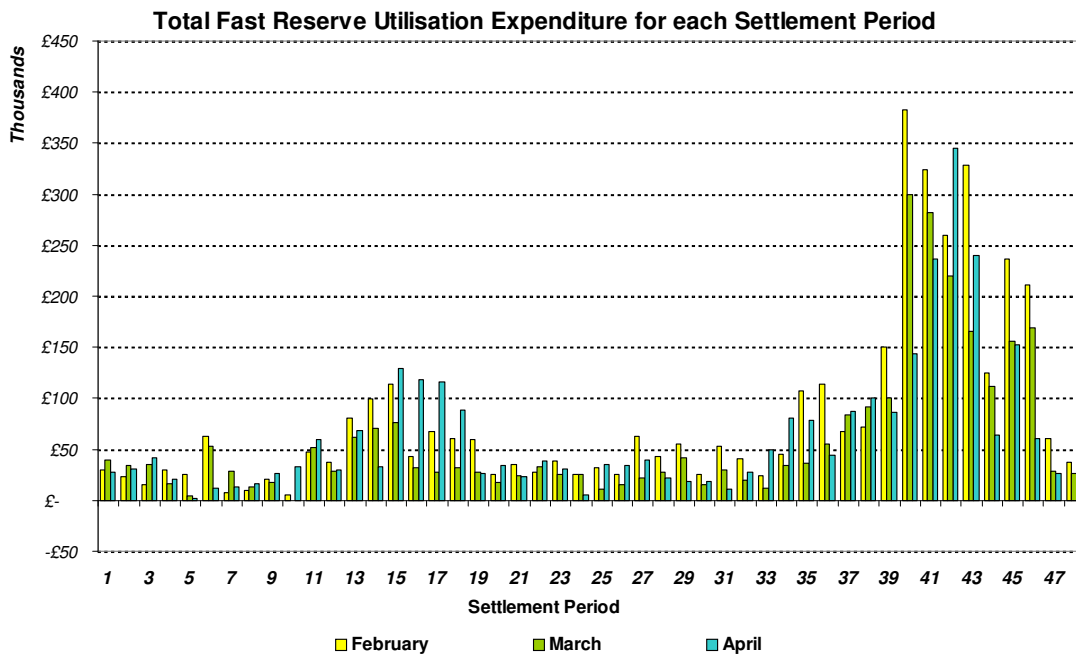


figure 5

The total volumes of Fast Reserve utilisation of 19.59 GWh for March 2013 and 17.12 GWh for April 2013, broken down into price bands are as follows:

March 2013	Price band (£/MWh)	Volume (MWh)	Average Price (£/MWh)	Cost (£m)
OFFERS	2000 to 99999	0	n/a	n/a
	1000 to 2000	0	n/a	n/a
	500 to 1000	10	500	0.005
	300 to 500	0	n/a	n/a
	150 to 300	1,793	183	0.328
	0 to 150	17,562	141	2.482
Total Offers		19.37 GWh		2.81 £m
BIDS	0 to -150	-53	-121	0.006
	-150 to -300	-168	-245	0.041
	-300 to -500	0	n/a	n/a
	--500 to -1000	0	n/a	n/a
	-1000 to -2000	0	n/a	n/a
	-2000 to -99999	0	n/a	n/a
Total Bids		-0.22 GWh		0.05 £m
Total (Offers + Bids)		19.59 GWh		2.86 £m

April 2013	Price band (£/MWh)	Volume (MWh)	Average Price (£/MWh)	Cost (£m)
OFFERS	2000 to 99999	0	n/a	n/a
	1000 to 2000	0	n/a	n/a
	500 to 1000	10	677	0.007
	300 to 500	0	n/a	n/a
	150 to 300	1,495	233	0.348
	0 to 150	14,181	186	2.633
Total Offers		15.69 GWh		2.99 £m
BIDS	0 to -150	-1,306	-81	0.106
	-150 to -300	-125	-337	0.042
	-300 to -500	0	n/a	n/a
	--500 to -1000	0	n/a	n/a
	-1000 to -2000	0	n/a	n/a
	-2000 to -99999	0	n/a	n/a
Total Bids		-1.43 GWh		0.15 £m
Total (Offers + Bids)		17.12 GWh		3.14 £m

For the month of June 2013, single month tenders and multi-month tenders from eligible Service Providers for firm Fast Reserve should be submitted to National Grid by **Wednesday 01 May 2013** (business day 1). National Grid will notify Service Providers of the outcome of the tender assessment by **Friday 17 May 2013** (business day 12).

Tenders should be sent by post for the attention of:

Bea Ennim
Market Operation
National Grid Electricity Transmission plc
National Grid House
Warwick Technology Park
Gallows Hill
Warwick, CV34 6DA