

Fast Reserve

Market Information for Tenders for April 2013

National Grid publishes this information, in order to inform potential participants for the Fast Reserve tender round for April 2013.

Fast Reserve Availability

Our indicative requirement for Fast Reserve in April 2013 is shown on a Settlement Period basis in Figure 1. This requirement covers weekdays, Saturdays, Sundays and Bank Holidays.

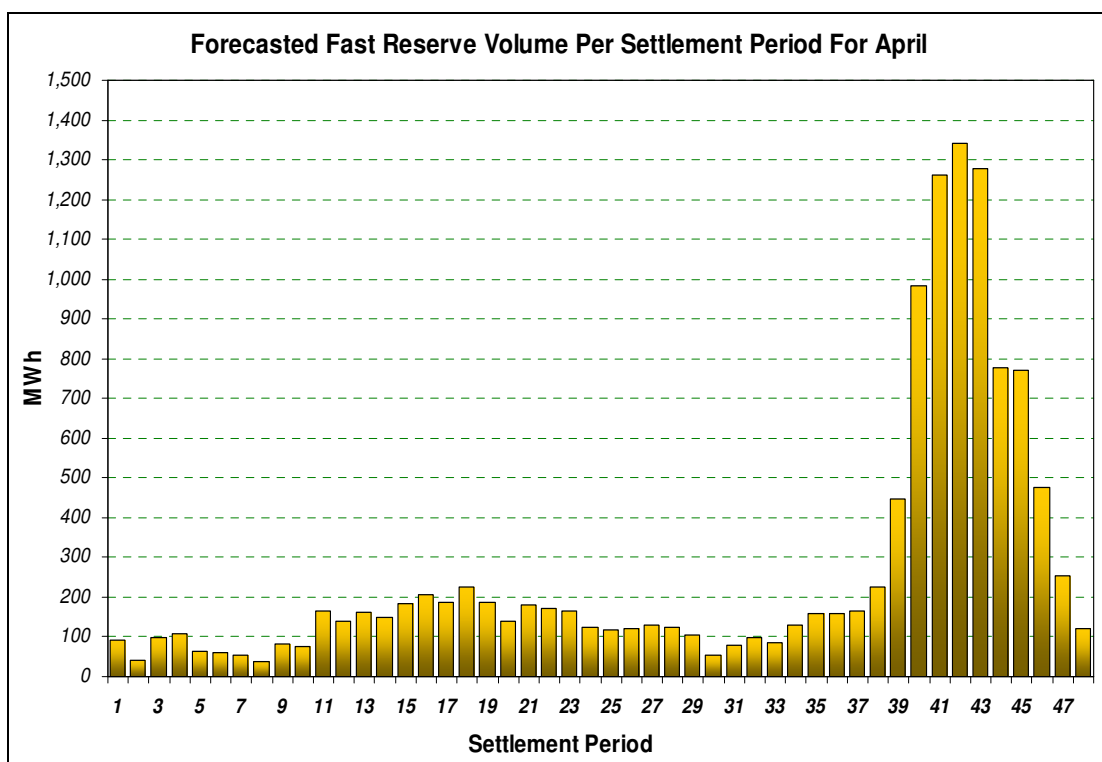


Figure 1

Figure 1 gives an indication of the times of day when Fast Reserve is most useful to National Grid. The actual amount of Fast Reserve "holding" varies from day to day, according to system conditions.

Fast Reserve Utilisation

The following BM information is based on the aggregate of Offers plus Bids accepted to provide Fast Reserve or an equivalent service. Note that the data for February 2013 contains both out-turn and forecast.

Figure 2 shows the daily utilisation of Fast Reserve in the BM and elsewhere during January 2013 and February 2013.

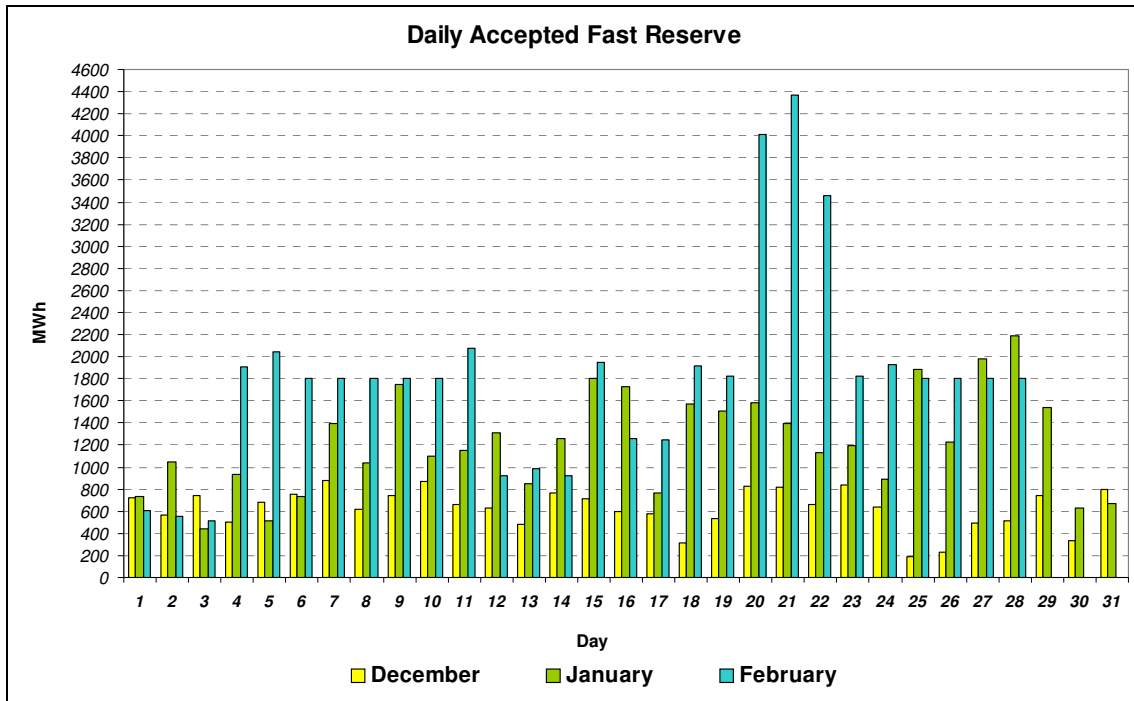


Figure 2

Figure 3 represents this data as total utilisation by Settlement Period across each month. This shows the daily profile of Fast Reserve utilisation.

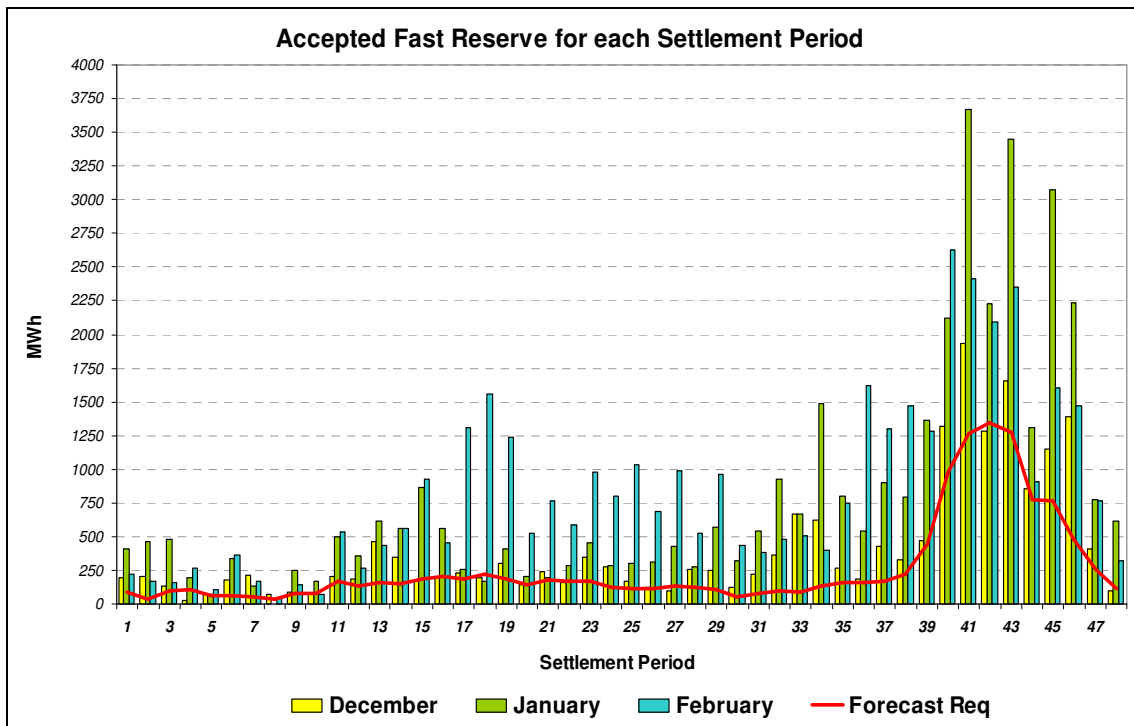


Figure 3

Figure 4 represents the same historical data, as an average utilisation price per Settlement Period for each month.

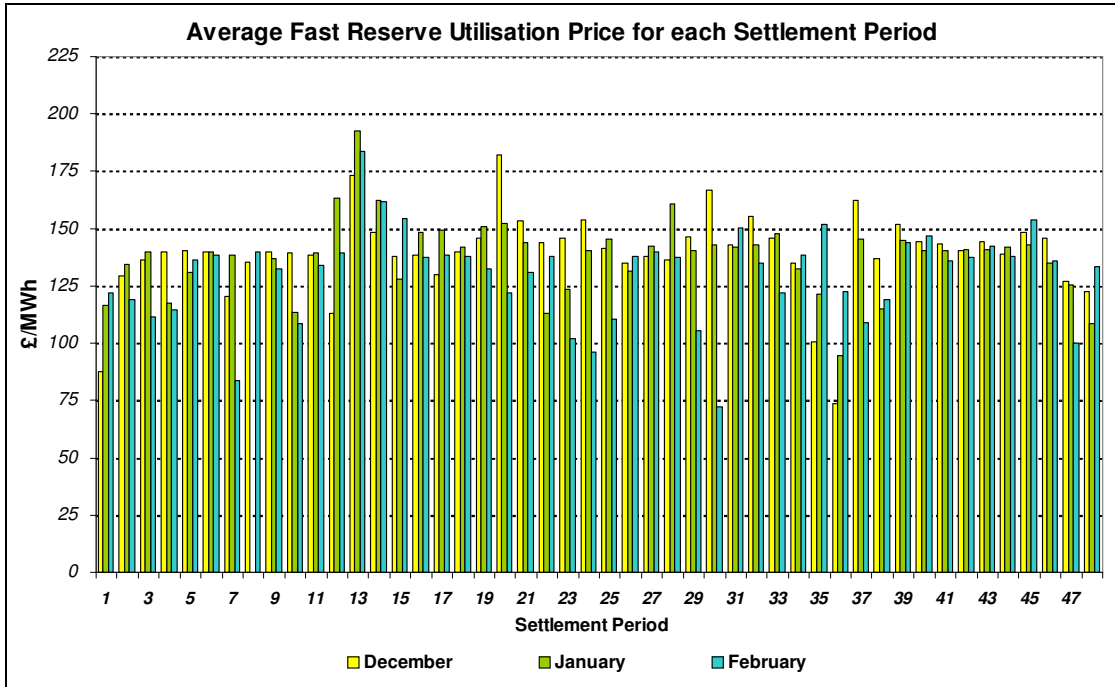


Figure 4

Finally, the same data is used in Figure 5, below, to show the profile of total Fast Reserve utilisation expenditure per Settlement Period for each month.

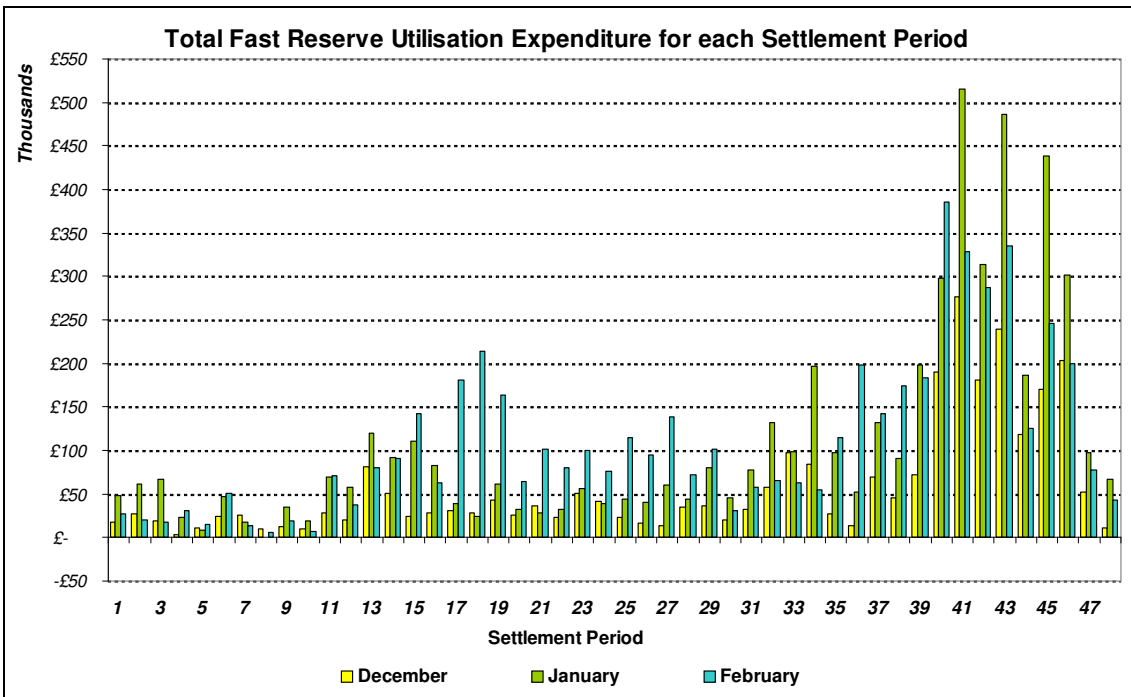


Figure 5

The total volumes of Fast Reserve utilisation of 36.4 GWh for January 2013 and 32.05 GWh for February 2013, broken down into price bands are as follows:

January 2013	Price band (£/MWh)	Volume (MWh)	Average Price (£/MWh)	Cost (£m)
OFFERS	2000 to 99999	0	n/a	n/a
	1000 to 2000	0	n/a	n/a
	500 to 1000	5	600	0.00
	300 to 500	0	n/a	n/a
	150 to 300	2,937	186	0.55
	0 to 150	32,922	140	4.61
Total Offers		35.86 GWh		£5.16m
BIDS	0 to -150	-39	-138	0.01
	-150 to -300	-463	-241	0.11
	-300 to -500	-38	-495	0.02
	--500 to -1000	0	n/a	n/a
	-1000 to -2000	0	n/a	n/a
	-2000 to -99999	0	n/a	n/a
Total Bids		-0.54 GWh		£0.14m
Total (Offers + Bids)		36.4 GWh		£5.3m

February 2013	Price band (£/MWh)	Volume (MWh)	Average Price (£/MWh)	Cost (£m)
OFFERS	2000 to 99999	0	n/a	n/a
	1000 to 2000	0	n/a	n/a
	500 to 1000	35	600	0.02
	300 to 500	0	n/a	n/a
	150 to 300	3,903	179	0.70
	0 to 150	27,724	137	3.79
Total Offers		31.66 GWh		£4.51m
BIDS	0 to -150	-79	-88	0.01
	-150 to -300	-260	-255	0.07
	-300 to -500	-53	-456	0.02
	--500 to -1000	0	n/a	n/a
	-1000 to -2000	0	n/a	n/a
	-2000 to -99999	0	n/a	n/a
Total Bids		-0.39 GWh		£0.1m
Total (Offers + Bids)		32.05 GWh		£4.61m

For the month of April 2013, tenders from eligible Service Providers for firm Fast Reserve should be submitted to National Grid by **Friday 1st March 2013** (business day 1) for multi-month tenders, or **Tuesday 5th March 2013** (business day 3) for single month tenders. National Grid will notify Service Providers of the outcome of the tender assessment by **Thursday 14th March 2013** (business day 10).

Tenders should be sent by post for the attention of:

Bea Ennim
Network Operations
National Grid Electricity Transmission plc
National Grid House
Warwick Technology Park
Gallows Hill
Warwick
CV34 6DA