

Fast Reserve

Market Information for Tenders for February 2013

National Grid publishes this information, in order to inform potential participants for the Fast Reserve tender round for February 2013.

Fast Reserve Requirement

Our indicative requirement for Fast Reserve in February 2013 is shown on a Settlement Period basis in Figure 1. This requirement covers weekdays, Saturdays, Sundays and Bank Holidays.

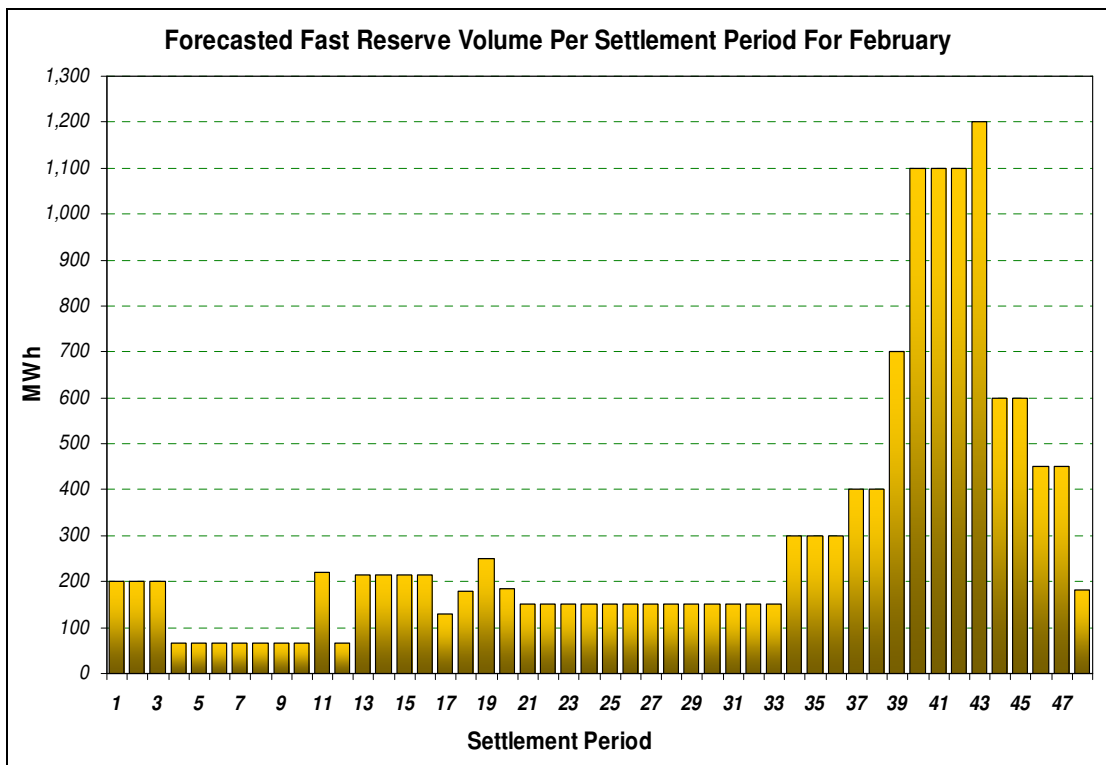


Figure 1

Figure 1 gives an indication of the times of day when Fast Reserve is most useful to National Grid. The actual amount of Fast Reserve "holding" varies from day to day, according to system conditions.

Fast Reserve Utilisation

The following BM information is based on the aggregate of Offers plus Bids accepted to provide Fast Reserve or an equivalent service. Note that the data for December 2012 contains both out-turn and forecast.

Figure 2 shows the daily utilisation of Fast Reserve in the BM and elsewhere during October 2012, November 2012 and December 2012.

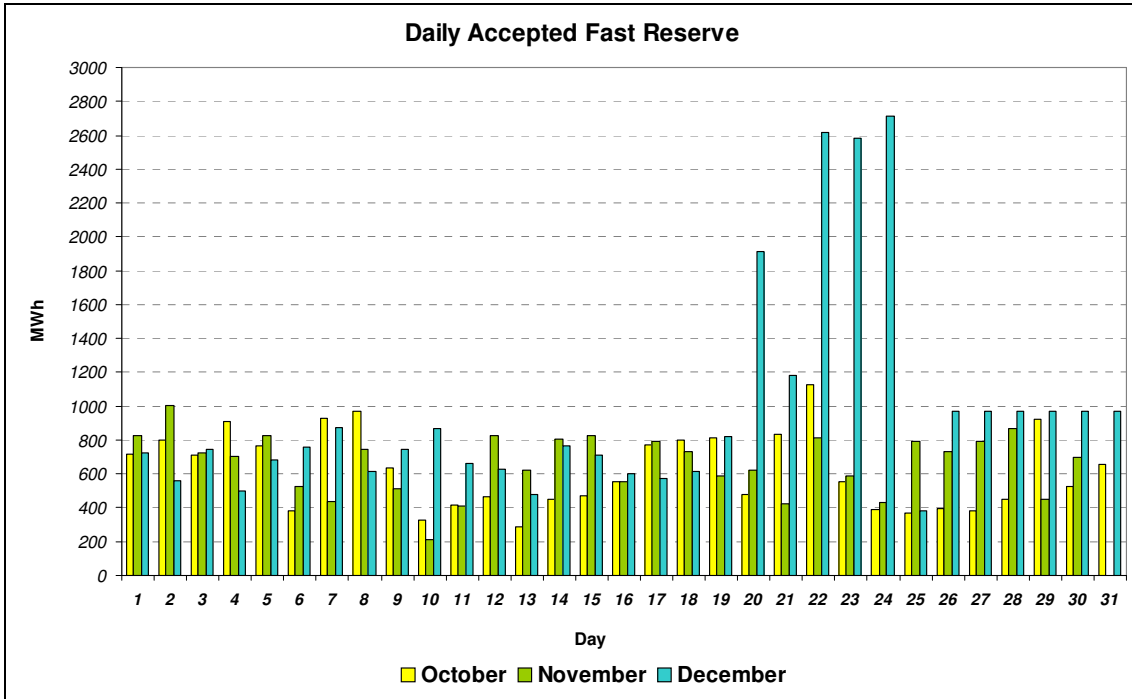


Figure 2

Figure 3 represents this data as total utilisation by Settlement Period across each month. This shows the daily profile of Fast Reserve utilisation. Estimated requirement for February 2013 is also shown.

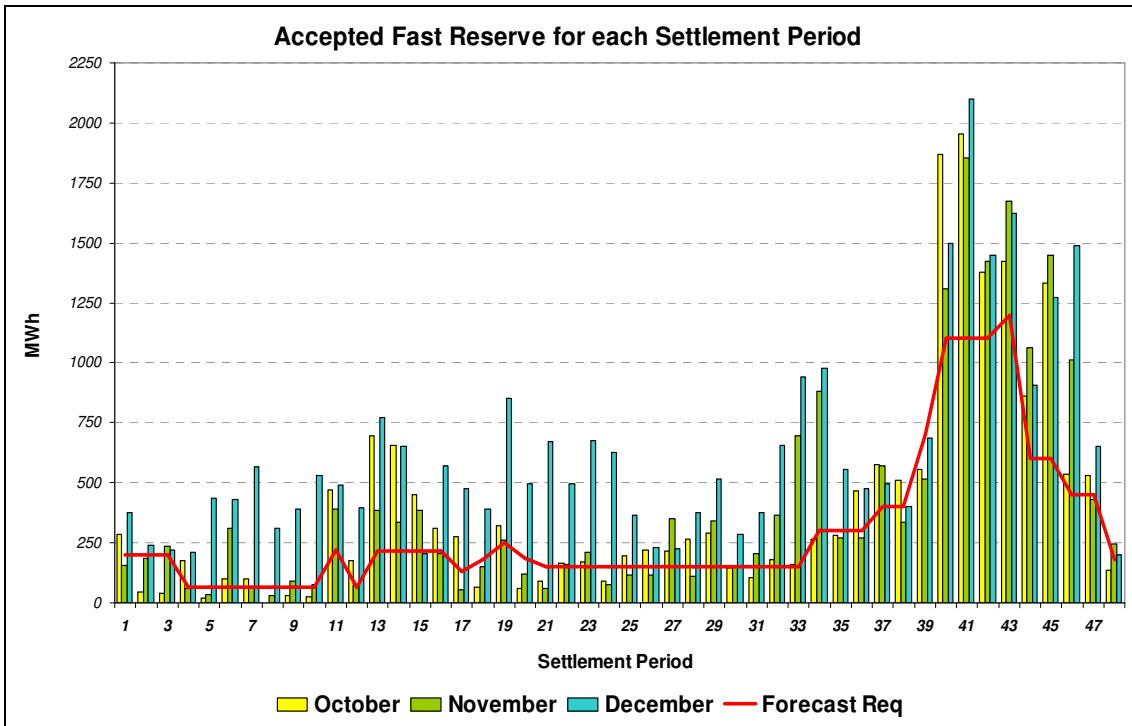


Figure 3

Figure 4 represents the same historical data, as an average utilisation price per Settlement Period for each month.

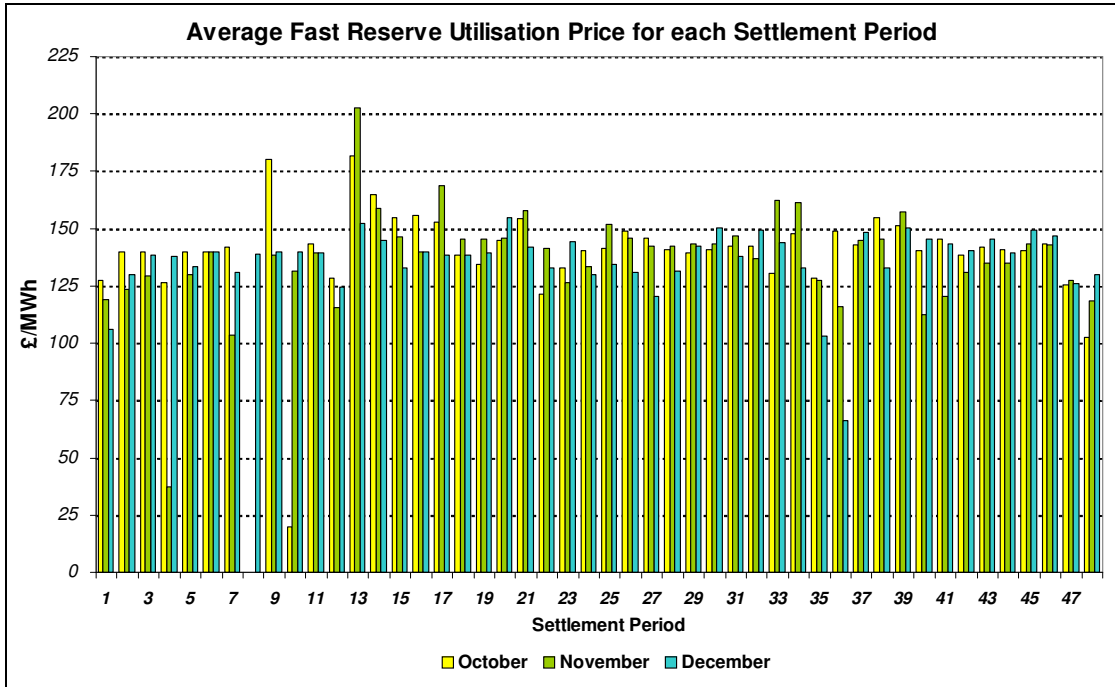


Figure 4

Finally, the same data is used in Figure 5, below, to show the profile of total Fast Reserve utilisation expenditure per Settlement Period for each month.

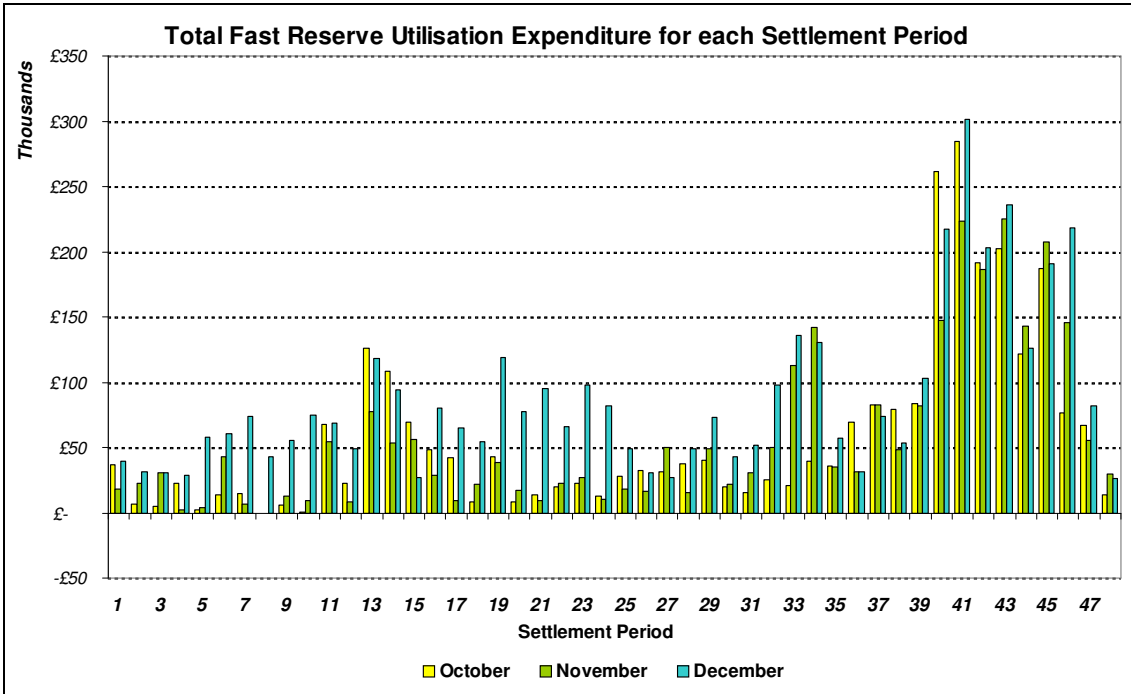


Figure 5

The total volumes of Fast Reserve utilisation of **18.29GWh** for November and **23.42GWh** for December are broken down into price bands as follows:

November	Price band (£/MWh range)	Volume (MWh)	Average Price (£/MWh)	Cost (£m)
OFFERS	2000 to 99999	0	n/a	n/a
	1000 to 2000	0	n/a	n/a
	500 to 1000	0	n/a	n/a
	300 to 500	0	n/a	n/a
	150 to 300	3,036	188	0.57
	0 to 150	14,810	142	2.10
Total Offers		17.85GWh		£2.67m
BIDS	0 to -150	-164	-116	0.02
	-150 to -300	-223	-242	0.05
	-300 to -500	-54	-495	0.03
	-500 to -1000	0	n/a	n/a
	-1000 to -2000	0	n/a	n/a
	-2000 to -99999	0	n/a	n/a
Total Bids		-0.44GWh		£0.1m
Total (Offers + Bids)		18.29GWh		£2.77m

December	Price band (£/MWh range)	Volume (MWh)	Average Price (£/MWh)	Cost (£m)
OFFERS	2000 to 99999	0	n/a	n/a
	1000 to 2000	0	n/a	n/a
	500 to 1000	9	500	0.00
	300 to 500	13	350	0.00
	150 to 300	2,455	183	0.45
	0 to 150	20,185	142	2.86
Total Offers		22.66GWh		£3.32m
BIDS	0 to -150	-508	-74	0.04
	-150 to -300	-226	-253	0.06
	-300 to -500	-22	-435	0.01
	-500 to -1000	0	n/a	n/a
	-1000 to -2000	0	n/a	n/a
	-2000 to -99999	0	n/a	n/a
Total Bids		-0.76GWh		£0.1m
Total (Offers + Bids)		23.42GWh		£3.42m

For the month of February 2013, tenders from eligible Service Providers for firm Fast Reserve should be submitted to National Grid by **Wednesday 2nd** January 2013 (business day 1) for multi-month tenders, or **Friday 4th** January 2013 (business day 3) for single month tenders. National Grid will notify Service Providers of the outcome of the tender assessment by **Tuesday 15th** January 2013 (business day 10).

Tenders should be sent by post for the attention of:

Bea Ennim
Network Operations
National Grid Electricity Transmission plc
National Grid House
Warwick Technology Park
Gallows Hill
Warwick
CV34 6DA