

# Fast Reserve

## Market Information for Tenders for January 2013

National Grid publishes this information, in order to inform potential participants for the Fast Reserve tender round for January 2013.

### Fast Reserve Requirement

Our indicative requirement for Fast Reserve in January 2013 is shown on a Settlement Period basis in Figure 1. This requirement covers weekdays, Saturdays, Sundays and Bank Holidays.

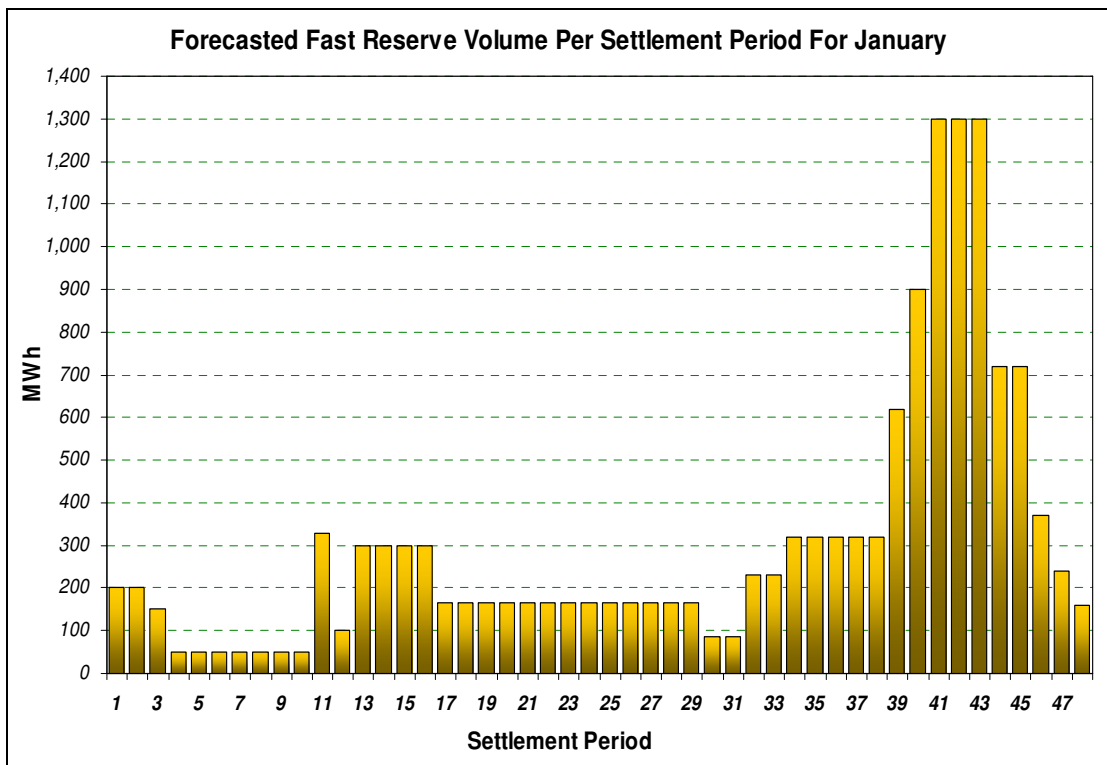


Figure 1

Figure 1 gives an indication of the times of day when Fast Reserve is most useful to National Grid. The actual amount of Fast Reserve "holding" varies from day to day, according to system conditions.

### Fast Reserve Utilisation

The following BM information is based on the aggregate of Offers plus Bids accepted to provide Fast Reserve or an equivalent service. Note that the data for November 2012 contains both out-turn and forecast.

Figure 2 shows the daily utilisation of Fast Reserve in the BM and elsewhere during September 2012, October 2012 and November 2012.

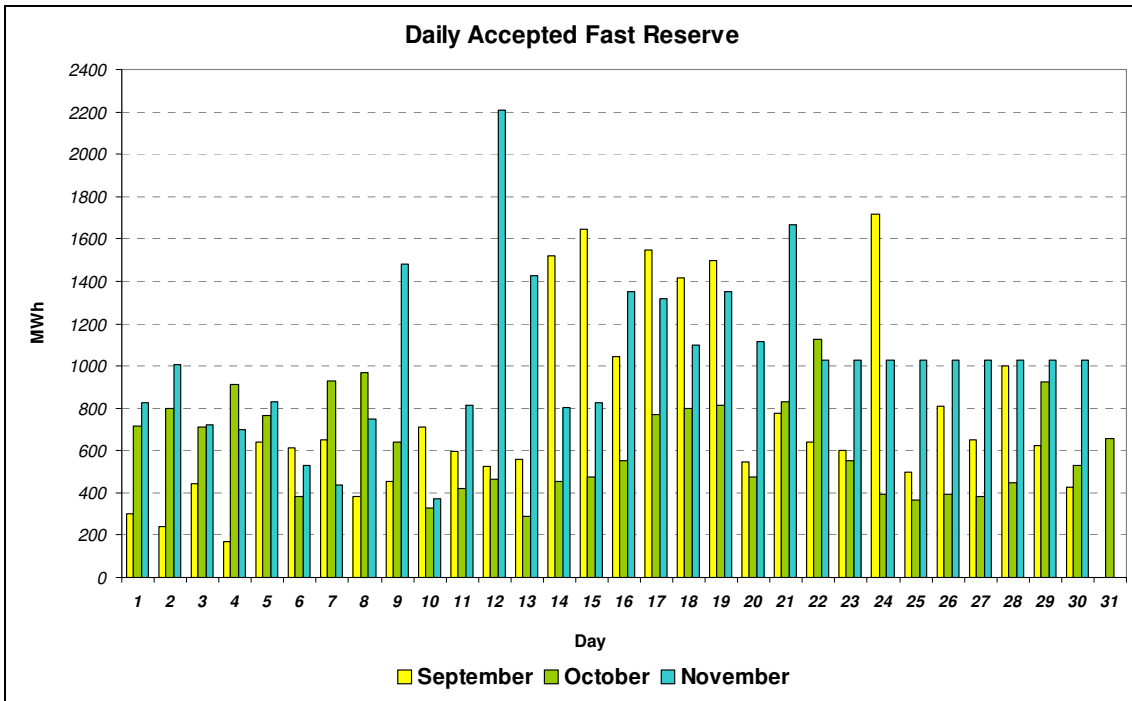


Figure 2

Figure 3 represents this data as total utilisation by Settlement Period across each month. This shows the daily profile of Fast Reserve utilisation. Estimated requirement for January 2013 is also shown.

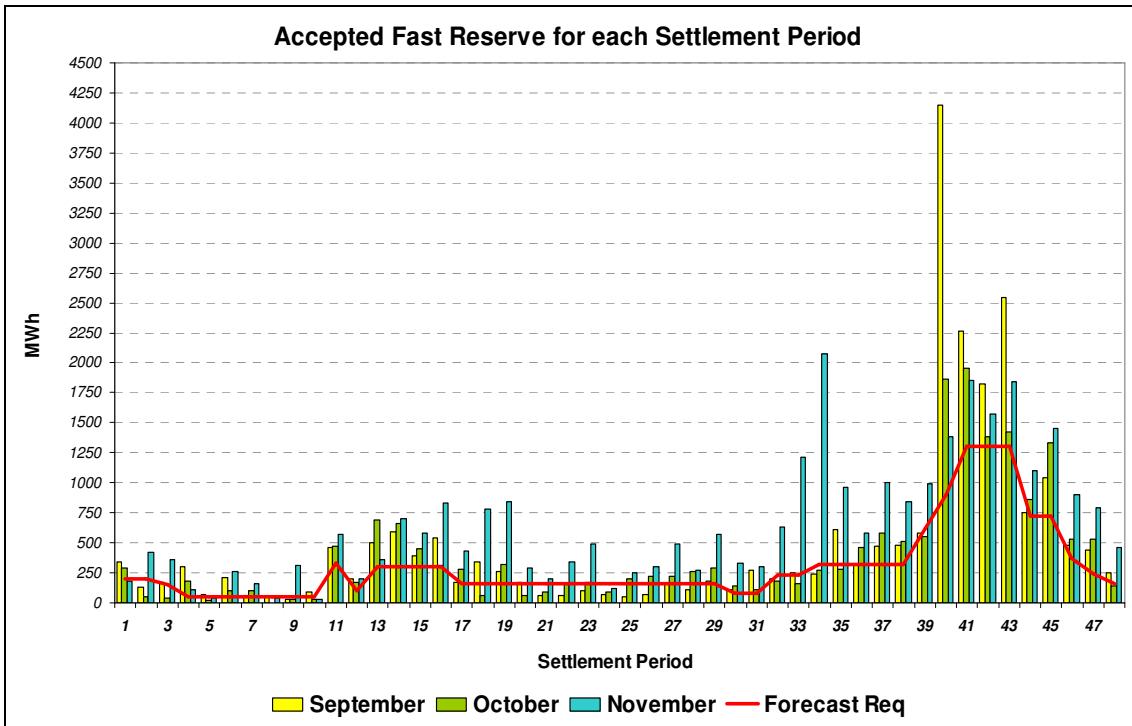


Figure 3

Figure 4 represents the same historical data, as an average utilisation price per Settlement Period for each month.

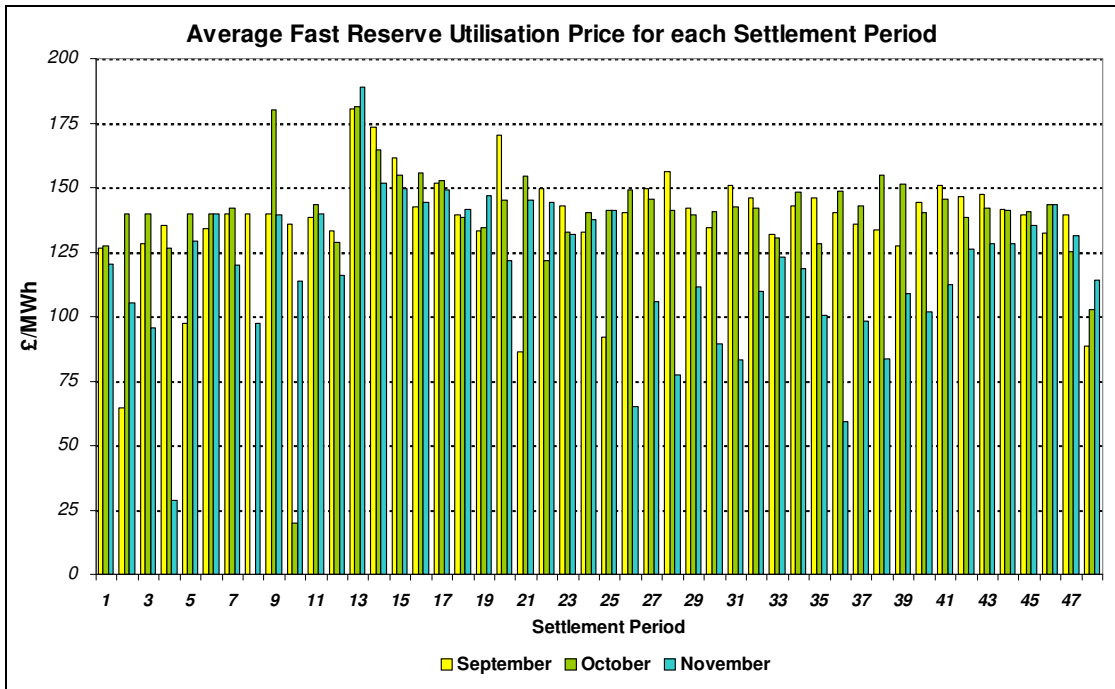


Figure 4

Finally, the same data is used in Figure 5, below, to show the profile of total Fast Reserve utilisation expenditure per Settlement Period for each month.

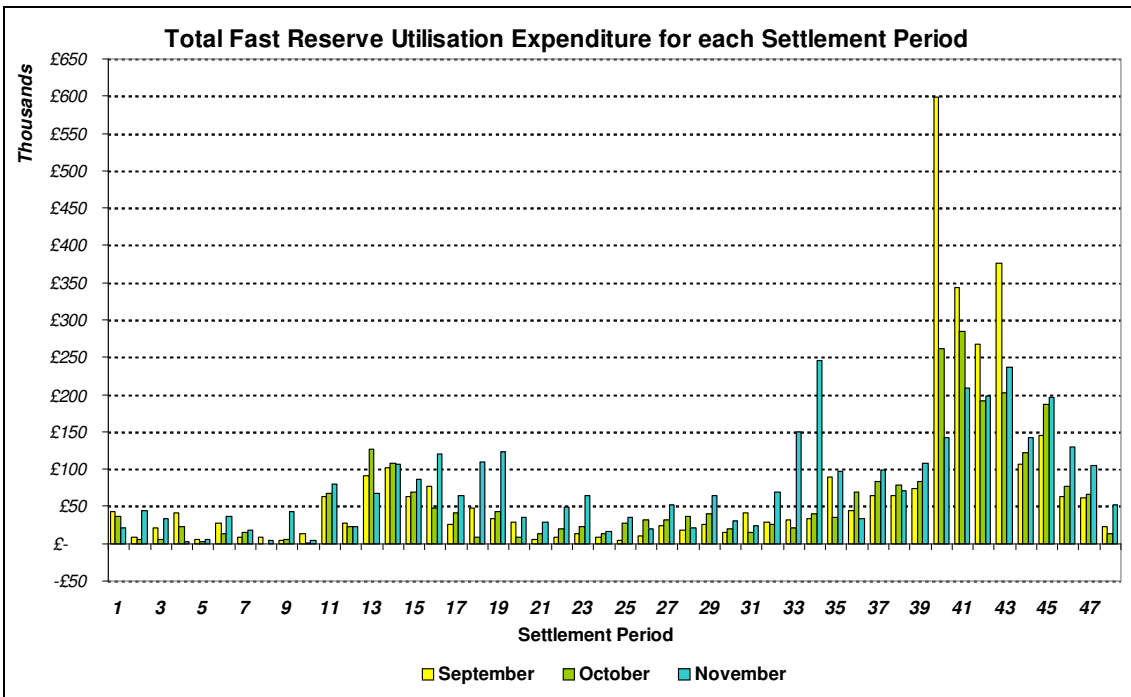


Figure 5

The total volumes of Fast Reserve utilisation of **18.53GWh** for October and **18.14GWh** for November are broken down into price bands as follows:

October	Price band (£/MWh range)	Volume (MWh)	Average Price (£/MWh)	Cost (£m)
<b>OFFERS</b>	2000 to 99999	0	n/a	n/a
	1000 to 2000	0	n/a	n/a
	500 to 1000	3	600	0.00
	300 to 500	0	n/a	n/a
	150 to 300	3,358	187	0.63
	0 to 150	14,706	139	2.04
<b>Total Offers</b>		<b>18.07GWh</b>		<b>£2.67m</b>
<b>BIDS</b>	0 to -150	-8	-162	0.00
	-150 to -300	-438	-238	0.10
	-300 to -500	-23	-407	0.01
	-500 to -1000	0	n/a	n/a
	-1000 to -2000	0	n/a	n/a
	-2000 to -99999	0	n/a	n/a
<b>Total Bids</b>		<b>-0.47GWh</b>		<b>£0.11m</b>
<b>Total (Offers + Bids)</b>		<b>18.53GWh</b>		<b>£2.79m</b>

November	Price band (£/MWh range)	Volume (MWh)	Average Price (£/MWh)	Cost (£m)
<b>OFFERS</b>	2000 to 99999	0	n/a	n/a
	1000 to 2000	0	n/a	n/a
	500 to 1000	0	n/a	n/a
	300 to 500	0	n/a	n/a
	150 to 300	2,569	182	0.47
	0 to 150	14,922	141	2.11
<b>Total Offers</b>		<b>17.49GWh</b>		<b>£2.58m</b>
<b>BIDS</b>	0 to -150	-461	-94	0.04
	-150 to -300	-144	-238	0.03
	-300 to -500	-44	-511	0.02
	-500 to -1000	0	n/a	n/a
	-1000 to -2000	0	n/a	n/a
	-2000 to -99999	0	n/a	n/a
<b>Total Bids</b>		<b>-0.65GWh</b>		<b>£0.1m</b>
<b>Total (Offers + Bids)</b>		<b>18.14GWh</b>		<b>£2.68m</b>

For the month of January 2013, tenders from eligible Service Providers for firm Fast Reserve should be submitted to National Grid by Monday 3<sup>rd</sup> December 2012 (business day 1) for multi-month tenders, or Wednesday 5<sup>th</sup> December 2012 (business day 3) for single month tenders. National Grid will notify Service Providers of the outcome of the tender assessment by Friday 14<sup>th</sup> December 2012 (business day 10).

Tenders should be sent by post for the attention of:

Bea Ennim  
Network Operations  
National Grid Electricity Transmission plc  
National Grid House  
Warwick Technology Park  
Gallows Hill  
Warwick  
CV34 6DA