

Fast Reserve

Market Information for Tenders for April 2014

National Grid publishes this information, in order to inform potential participants for the Fast Reserve tender round for April 2014.

Fast Reserve Availability

Our indicative requirement for Fast Reserve in April 2014 is shown on a Settlement Period basis in Figure 1. This requirement covers weekdays, Saturdays, Sundays and Bank Holidays.

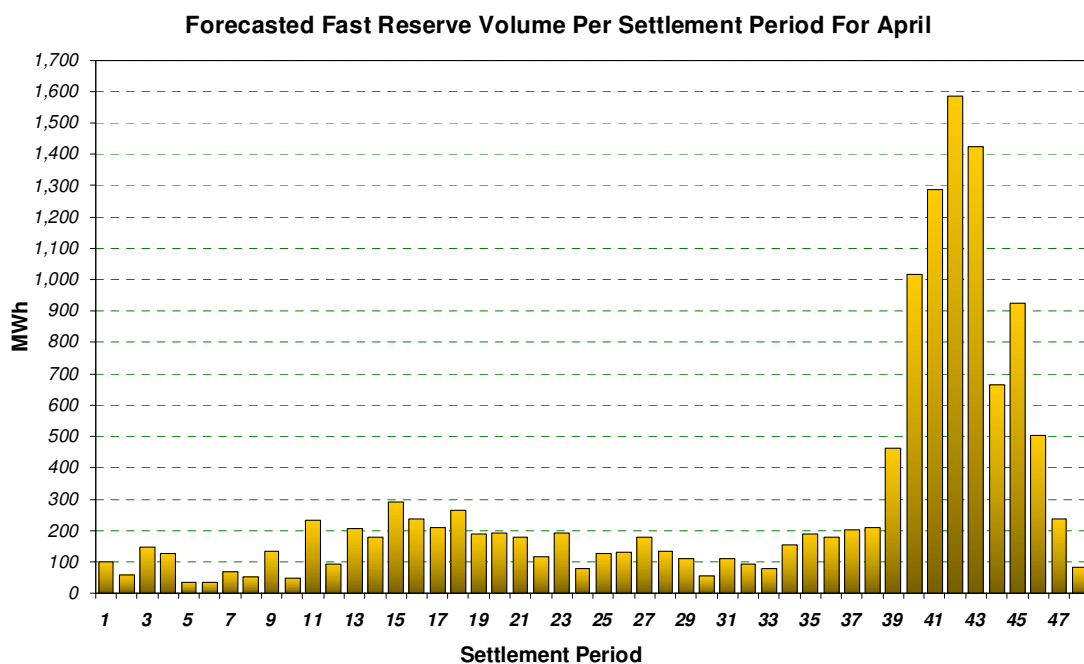


Figure 1

Figure 1 gives an indication of the times of day when Fast Reserve is most useful to National Grid. The actual amount of Fast Reserve "holding" varies from day to day, according to system conditions.

Fast Reserve Utilisation

The following BM information is based on the aggregate of Offers plus Bids accepted to provide Fast Reserve or an equivalent service. Note that the data for February 2014 contains both out-turn and forecast.

Figure 2 shows the daily utilisation of Fast Reserve in the BM and elsewhere during January 2014 and February 2014.

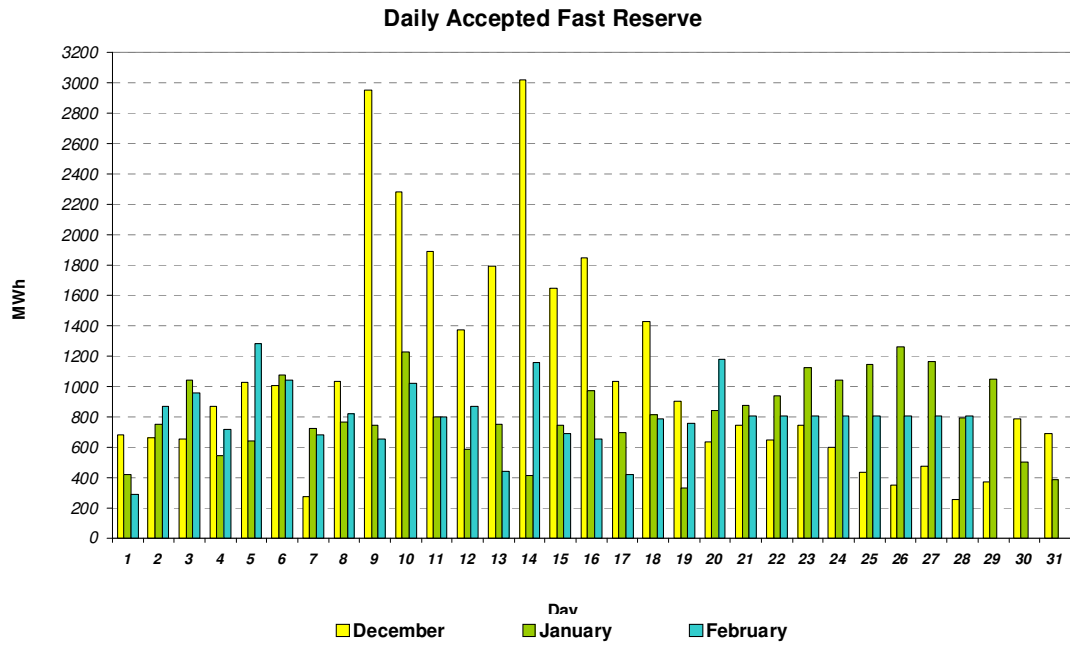


Figure 2

Figure 3 represents this data as total utilisation by Settlement Period across each month. This shows the daily profile of Fast Reserve utilisation.

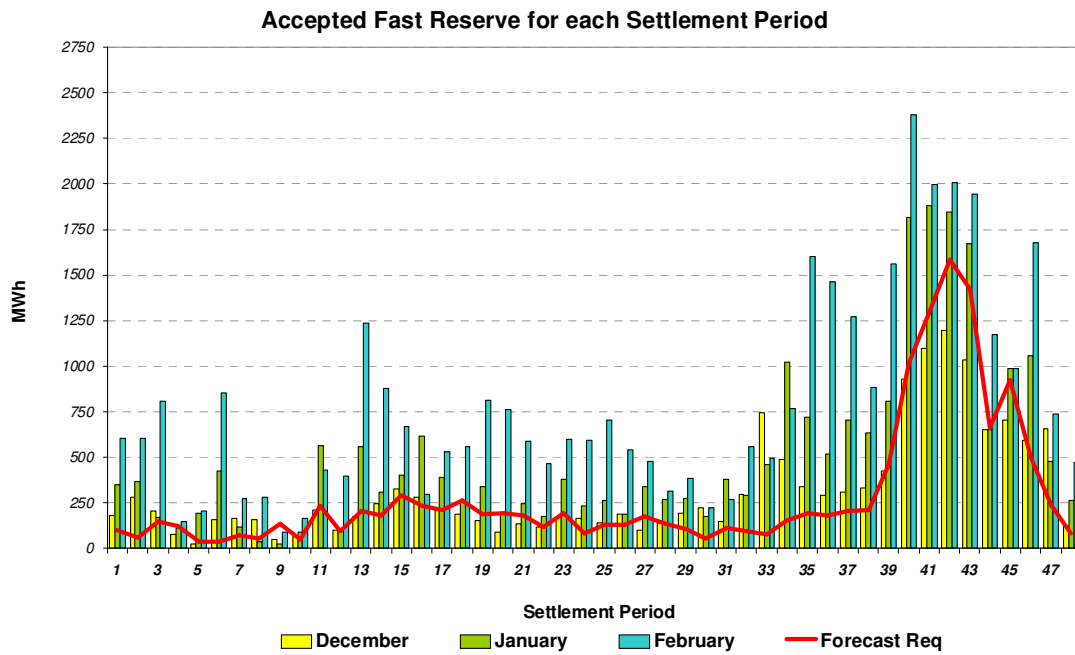


Figure 3

Figure 4 represents the same historical data, as an average utilisation price per Settlement Period for each month.

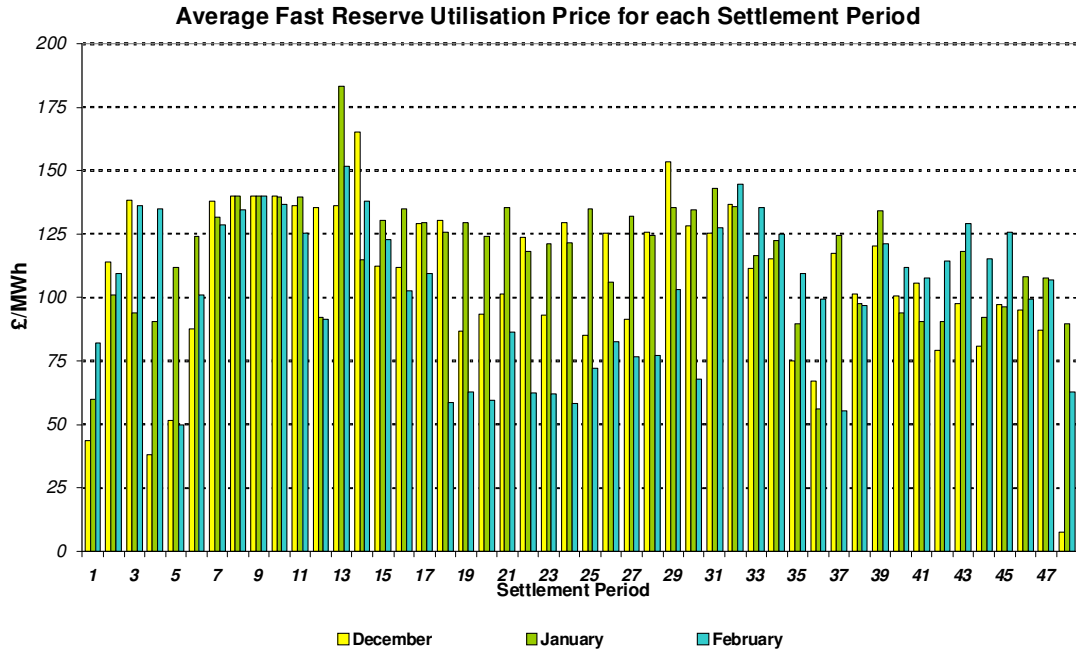


Figure 4

Finally, the same data is used in Figure 5, below, to show the profile of total Fast Reserve utilisation expenditure per Settlement Period for each month.

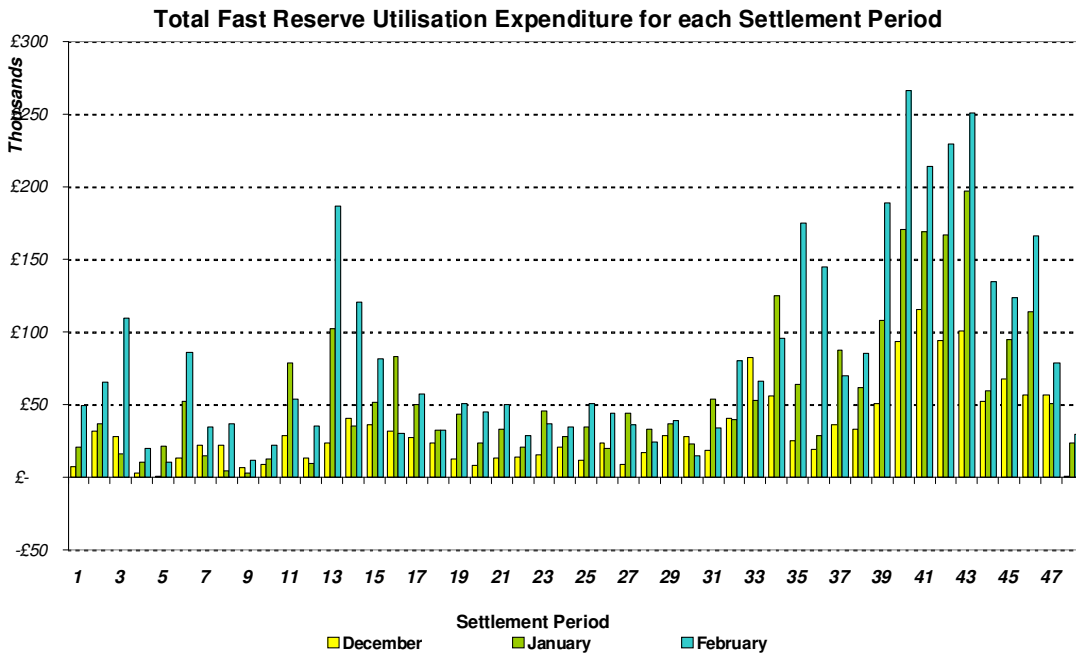


Figure 5

The total volumes of Fast Reserve utilisation of 19.03 GWh for January 2014 and 17.52 GWh for February 2014, broken down into price bands are as follows:

January 2014	Price band (£/MWh)	Volume (MWh)	Average Price (£/MWh)	Cost (£m)
OFFERS	2000 to 99999	0	n/a	n/a
	1000 to 2000	0	n/a	n/a
	500 to 1000	5	500	0.003
	300 to 500	35	325	0.011
	150 to 300	2,202	188	0.413
	0 to 150	16,448	139	2.286
Total Offers		18.69 GWh		2.71 £m
BIDS	0 to -150	-341	-85	0.029
	-150 to -300	0	n/a	n/a
	-300 to -500	0	n/a	n/a
	--500 to -1000	0	n/a	n/a
	-1000 to -2000	0	n/a	n/a
	-2000 to -99999	0	n/a	n/a
Total Bids		-0.34 GWh		0.03 £m
Total (Offers + Bids)		19.03 GWh		2.74 £m

February 2014	Price band (£/MWh)	Volume (MWh)	Average Price (£/MWh)	Cost (£m)
OFFERS	2000 to 99999	0	n/a	n/a
	1000 to 2000	0	n/a	n/a
	500 to 1000	0	n/a	n/a
	300 to 500	20	518	0.010
	150 to 300	1,227	307	0.376
	0 to 150	16,131	223	3.601
Total Offers		17.38 GWh		3.99 £m
BIDS	0 to -150	-142	-237	0.034
	-150 to -300	0	n/a	n/a
	-300 to -500	0	n/a	n/a
	--500 to -1000	0	n/a	n/a
	-1000 to -2000	0	n/a	n/a
	-2000 to -99999	0	n/a	n/a
Total Bids		-0.14 GWh		0.03 £m
Total (Offers + Bids)		17.52 GWh		4.02 £m

For the month of April 2014, single month tenders and multi-month tenders from eligible Service Providers for firm Fast Reserve should be submitted to National Grid by **Monday 03 March 2014** (business day 1). National Grid will notify Service Providers of the outcome of the tender assessment by **Tuesday 18 March 2014** (business day 12).

Tenders should be sent by post for the attention of:

Bea Ennim
Market Operation
National Grid Electricity Transmission plc
National Grid House
Warwick Technology Park
Gallows Hill
Warwick, CV34 6DA