

Fast Reserve

Market Information for Tenders for March 2015

National Grid publishes this information, in order to inform potential participants for the Fast Reserve tender round for March 2015.

Fast Reserve Availability

Our indicative requirement for Fast Reserve in March 2015 is shown on a Settlement Period basis in Figure 1. This requirement covers weekdays, Saturdays, Sundays and Bank Holidays.

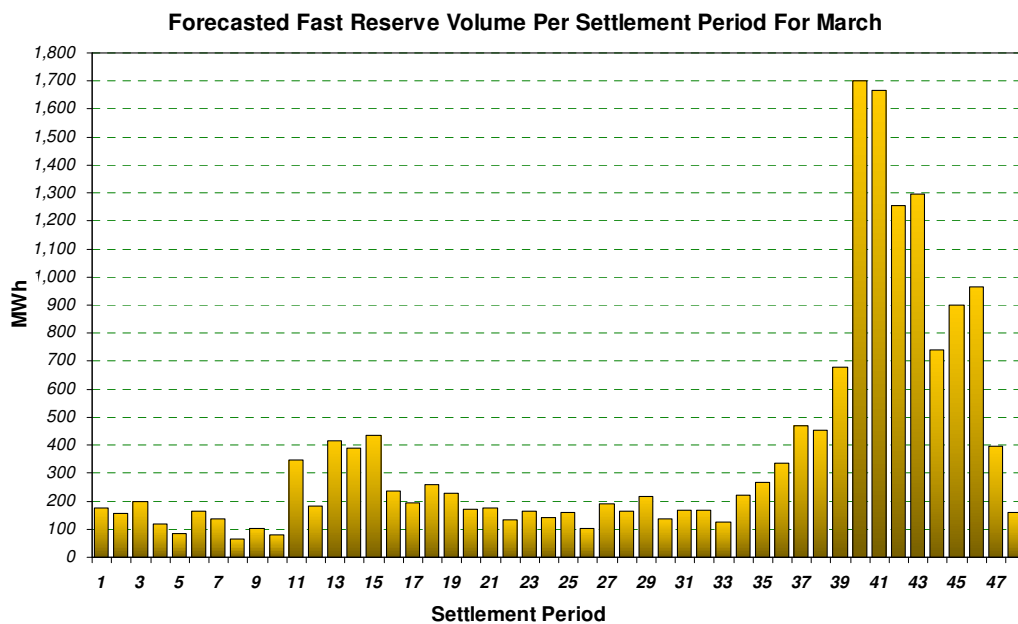


Figure 1

Figure 1 gives an indication of the times of day when Fast Reserve is most useful to National Grid. The actual amount of Fast Reserve "holding" varies from day to day, according to system conditions.

Fast Reserve Utilisation

The following BM information is based on the aggregate of Offers plus Bids accepted to provide Fast Reserve or an equivalent service. Note that the data for January 2015 contains both out-turn and forecast.

Figure 2 shows the daily utilisation of Fast Reserve in the BM and elsewhere during December 2014 and January 2015.

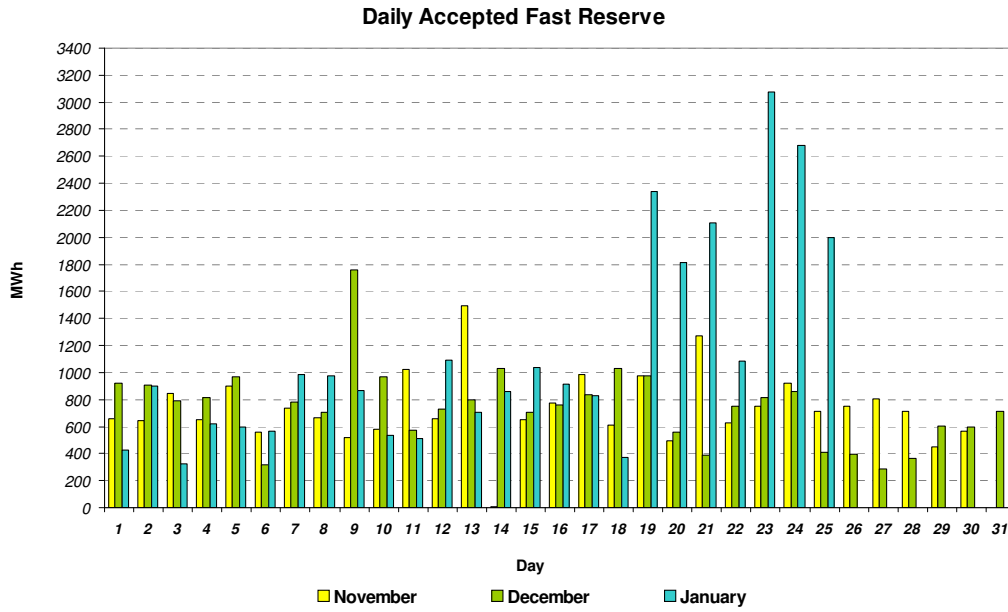


Figure 2

Figure 3 represents this data as total utilisation by Settlement Period across each month. This shows the daily profile of Fast Reserve utilisation.

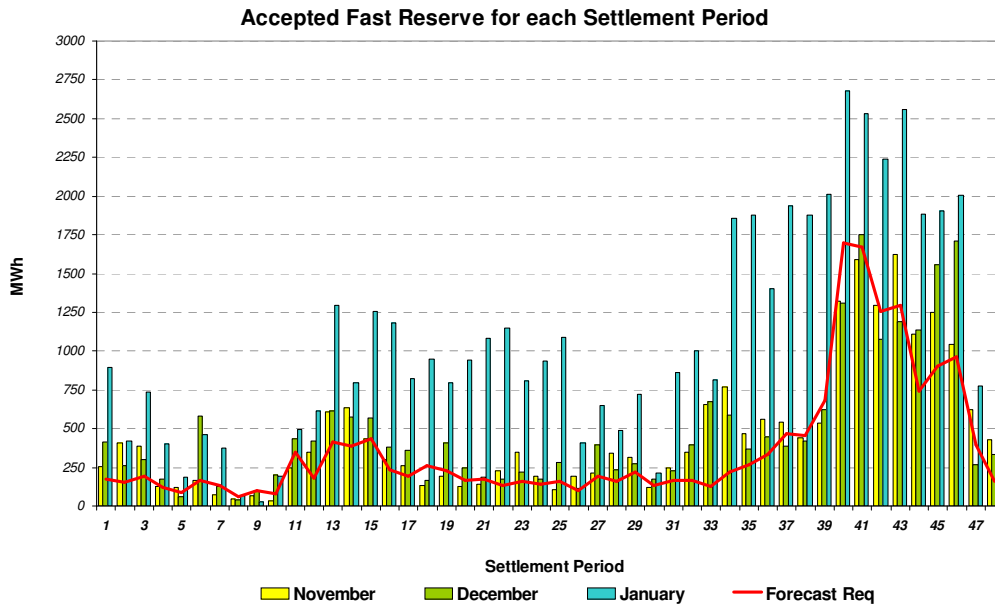


Figure 3

Figure 4 represents the same historical data, as an average utilisation price per Settlement Period for each month.

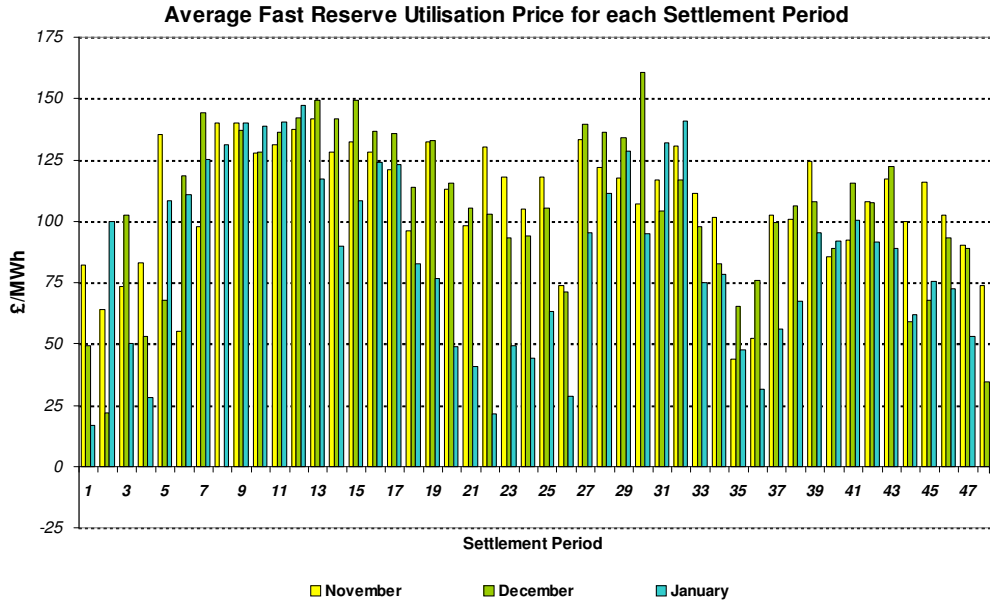


Figure 4

Finally, the same data is used in Figure 5, below, to show the profile of total Fast Reserve utilisation expenditure per Settlement Period for each month.

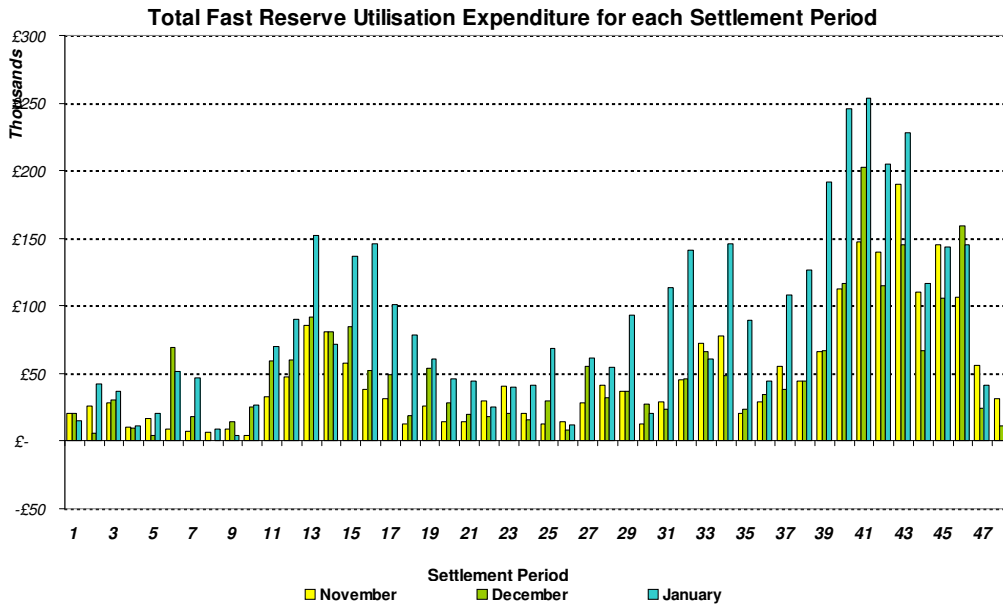


Figure 5

The total volumes of Fast Reserve utilisation of 33.75 GWh for December 2014 and 56.05 GWh for January 2015, broken down into price bands are as follows:

December 2014	Price band (£/MWh)	Volume (MWh)	Average Price (£/MWh)	Cost (£m)
OFFERS	2000 to 99999	0	n/a	n/a
	1000 to 2000	0	n/a	n/a
	500 to 1000	10	600	0.006
	300 to 500	123	325	0.040
	150 to 300	3,348	169	0.566
	0 to 150	29,794	141	4.202
Total Offers		33.27 GWh		4.81 £m
BIDS	0 to -150	-477	-119	0.057
	-150 to -300	0	n/a	n/a
	-300 to -500	0	n/a	n/a
	--500 to -1000	0	n/a	n/a
	-1000 to -2000	0	n/a	n/a
	-2000 to -99999	0	n/a	n/a
Total Bids		-0.48 GWh		0.06 £m
Total (Offers + Bids)		33.75 GWh		4.87 £m

January 2015	Price band (£/MWh)	Volume (MWh)	Average Price (£/MWh)	Cost (£m)
OFFERS	2000 to 99999	0	n/a	n/a
	1000 to 2000	0	n/a	n/a
	500 to 1000	9	600	0.005
	300 to 500	55	325	0.018
	150 to 300	5,924	173	1.024
	0 to 150	48,363	141	6.830
Total Offers		54.35 GWh		7.88 £m
BIDS	0 to -150	-1,699	-76	0.130
	-150 to -300	0	n/a	n/a
	-300 to -500	0	n/a	n/a
	--500 to -1000	0	n/a	n/a
	-1000 to -2000	0	n/a	n/a
	-2000 to -99999	0	n/a	n/a
Total Bids		-1.7 GWh		0.13 £m
Total (Offers + Bids)		56.05 GWh		8.01 £m

For the month of March 2015, single month tenders and multi-month tenders from eligible Service Providers for firm Fast Reserve should be submitted to National Grid by **Monday 02 February 2015** (business day 1). National Grid will notify Service Providers of the outcome of the tender assessment by **Tuesday 17 February 2015** (business day 12).

Tenders should be sent by post for the attention of:

Bea Ennim
Market Operation
National Grid Electricity Transmission plc
National Grid House
Warwick Technology Park
Gallows Hill
Warwick, CV34 6DA