

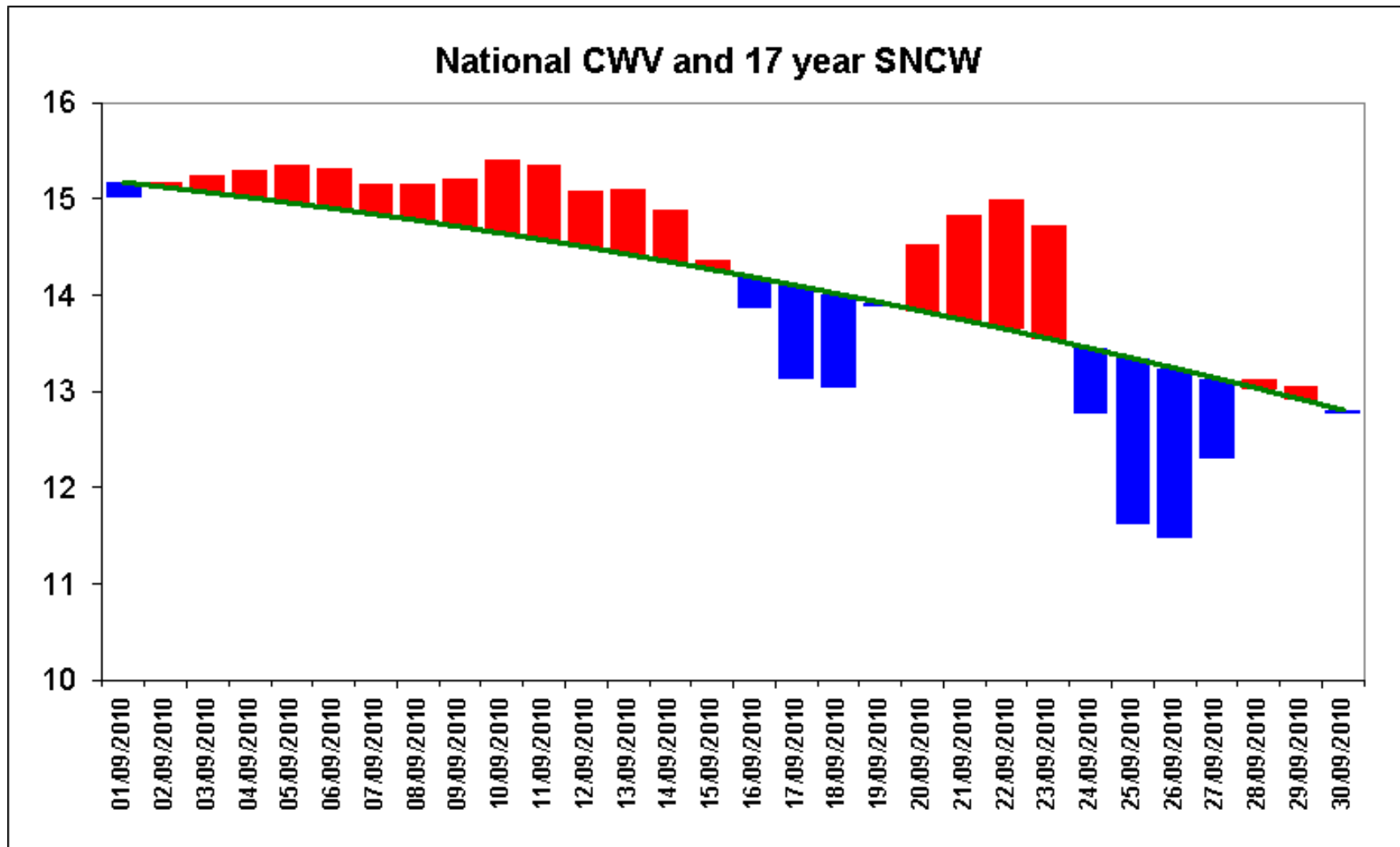
Operational Overview



Weather

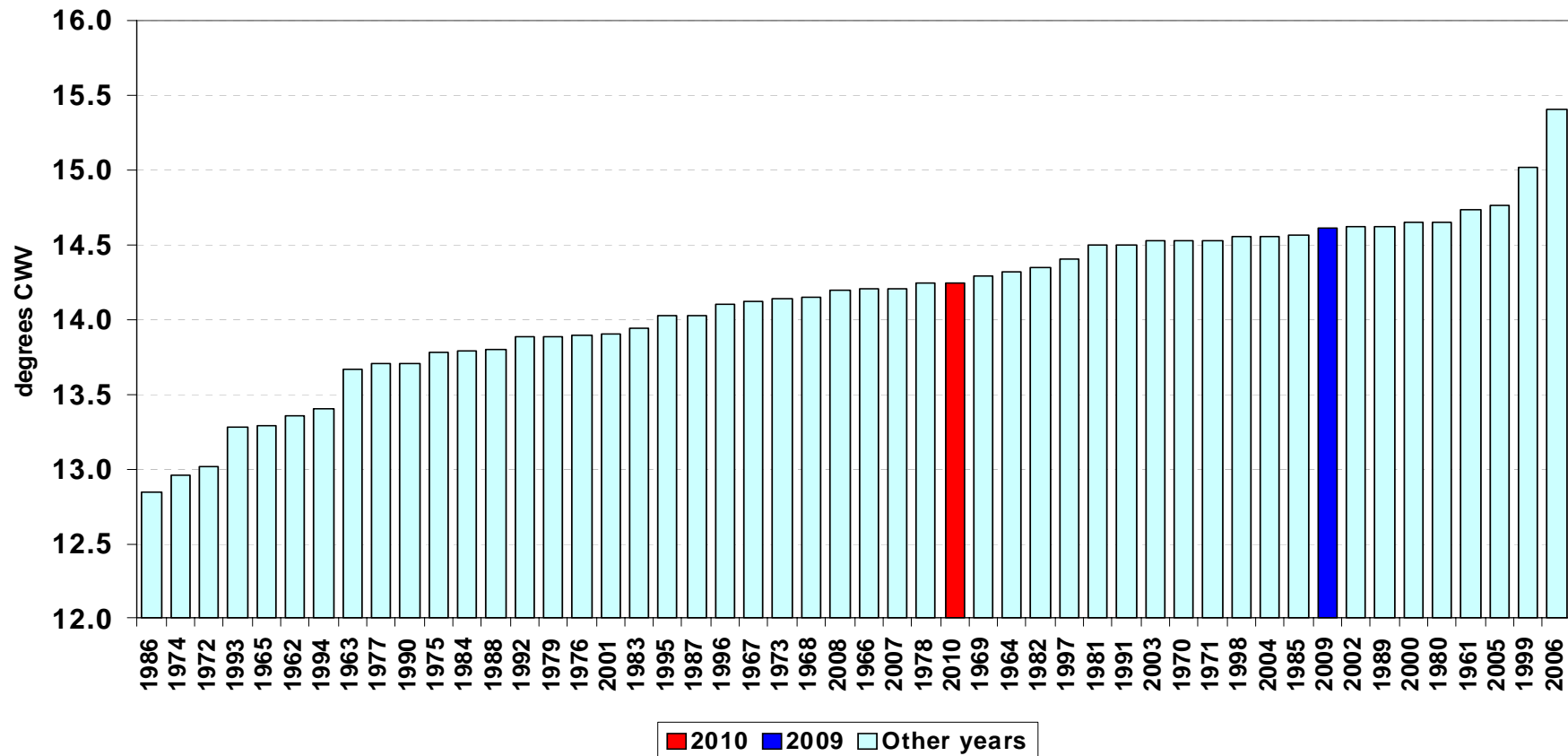


Weather – September 2010



Mean Composite Weather Variables – September 2010

Mean National Composite Weather for September

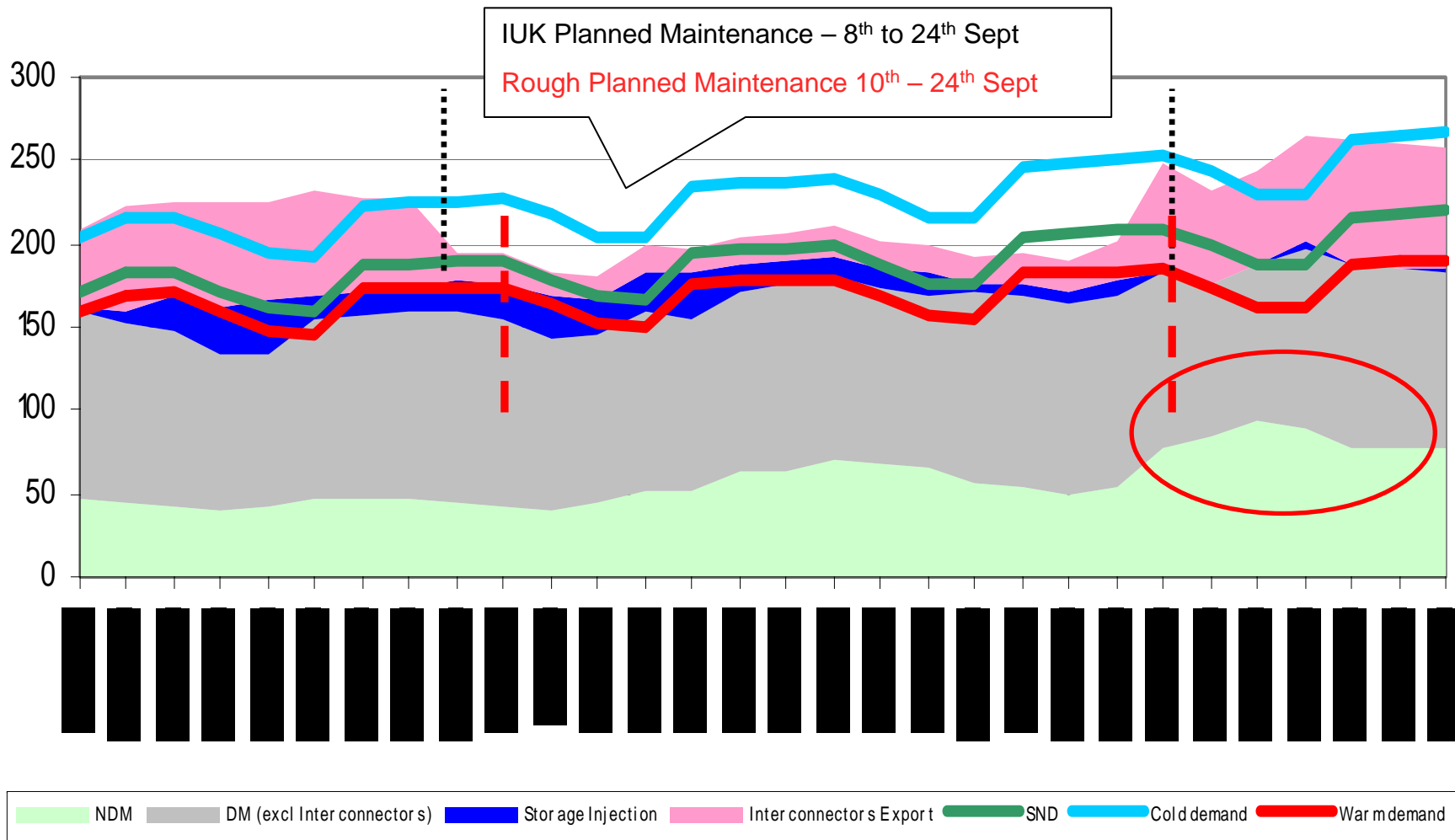


Demands



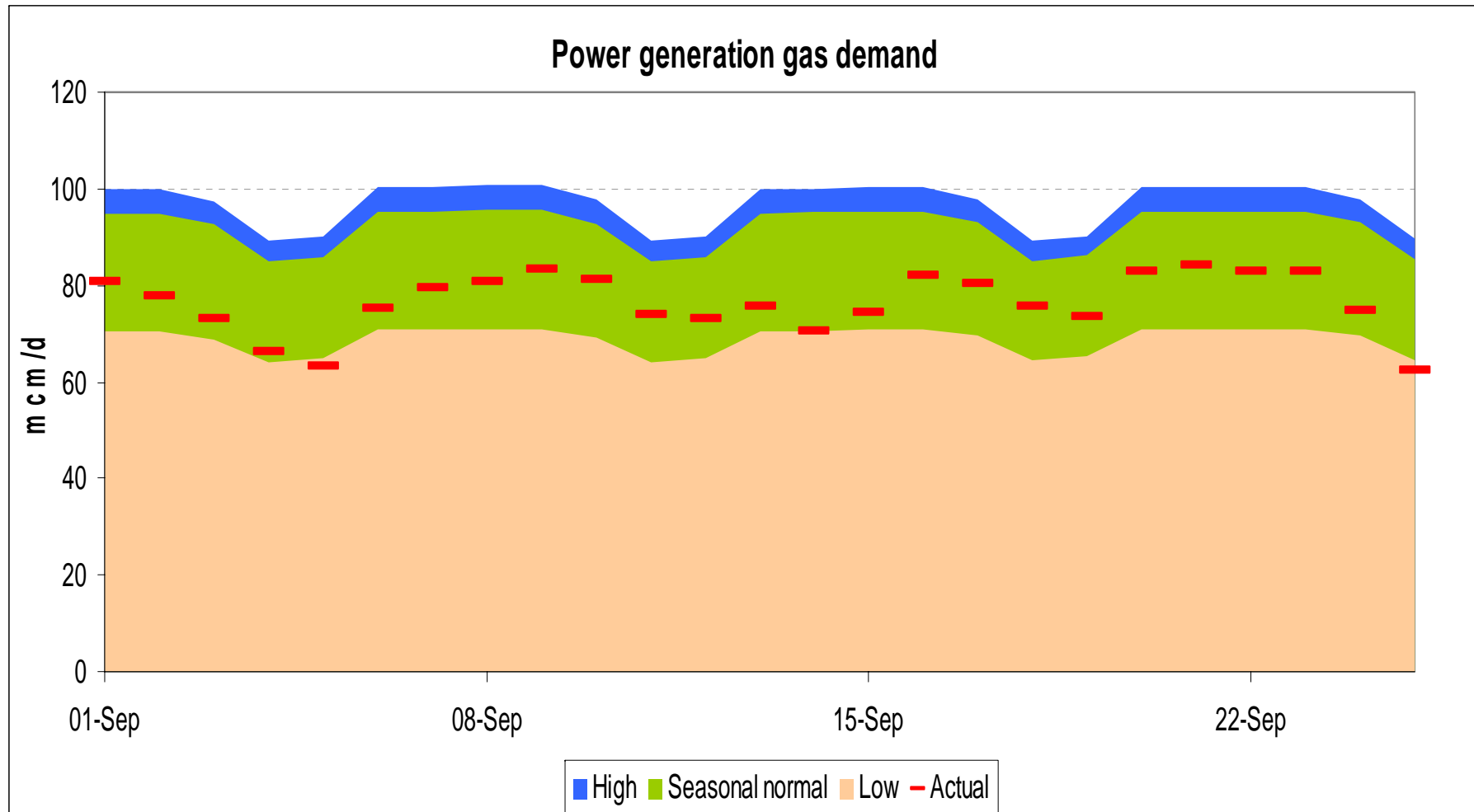
Gas Demand Breakdown

1st September to 30th September 2010



Power Generation

1st to 30th September 2010

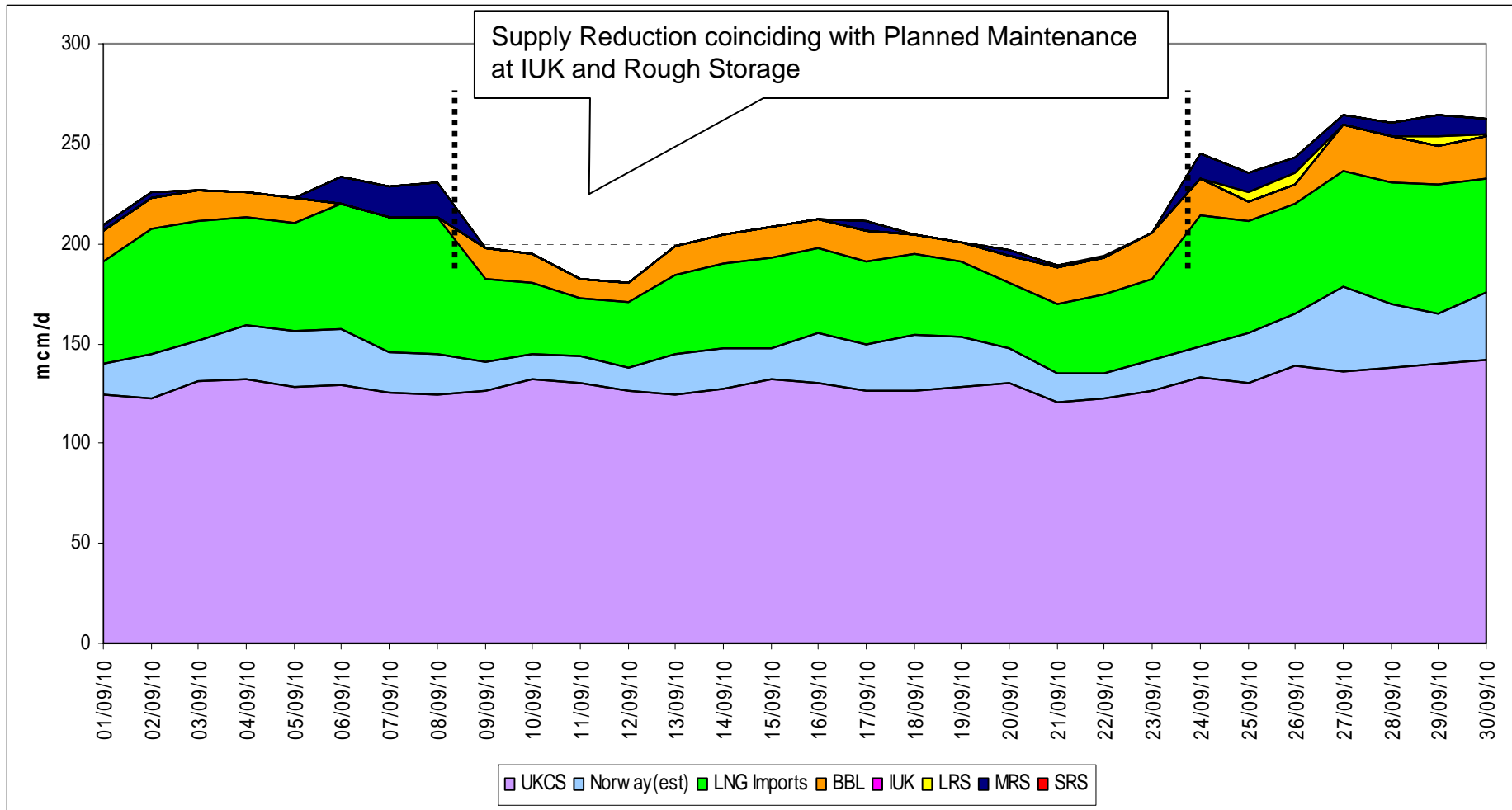


Supplies



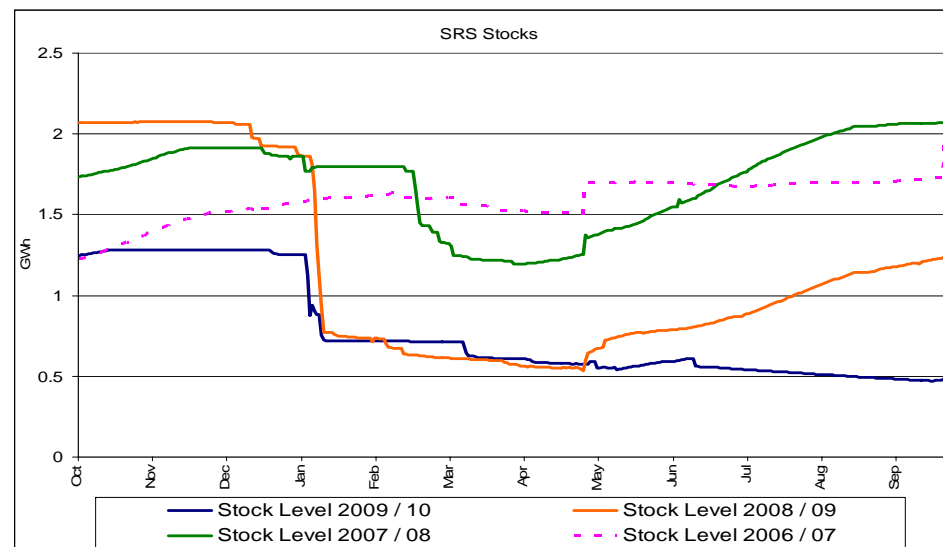
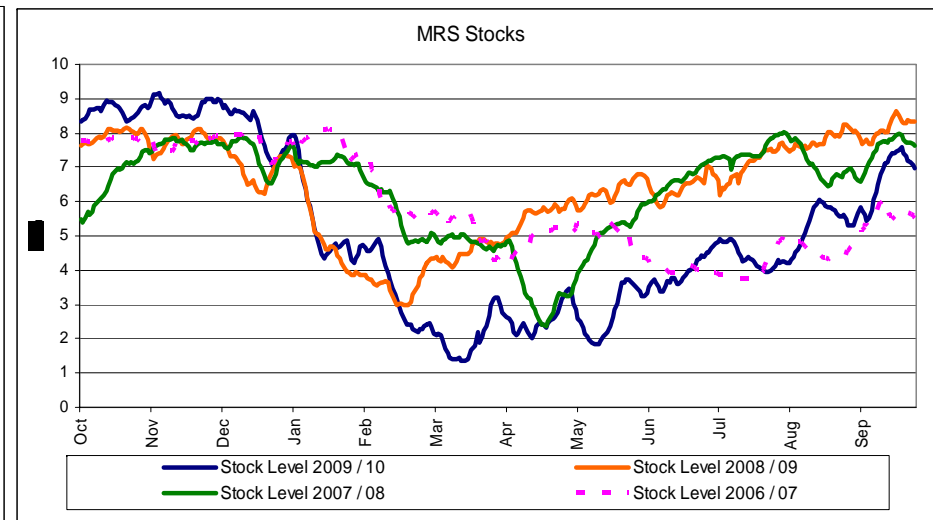
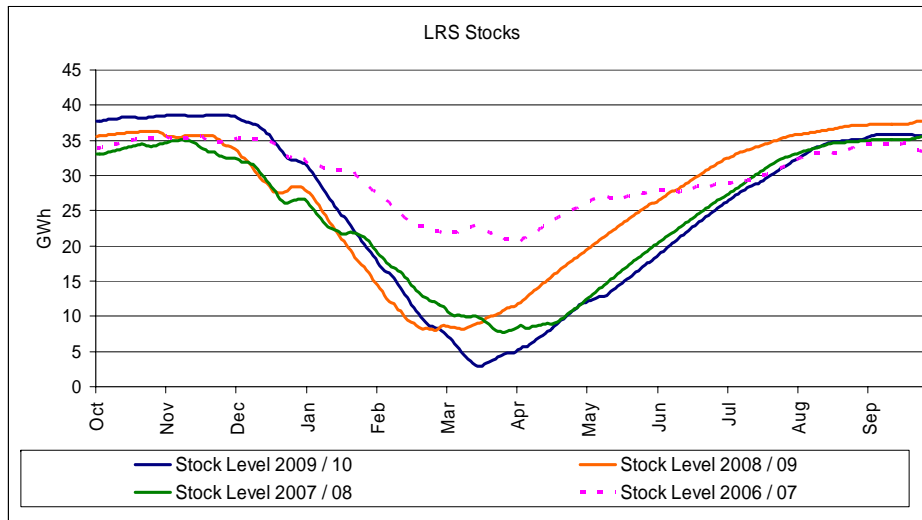
Gas Supply Breakdown

1st September to 30th September 2010



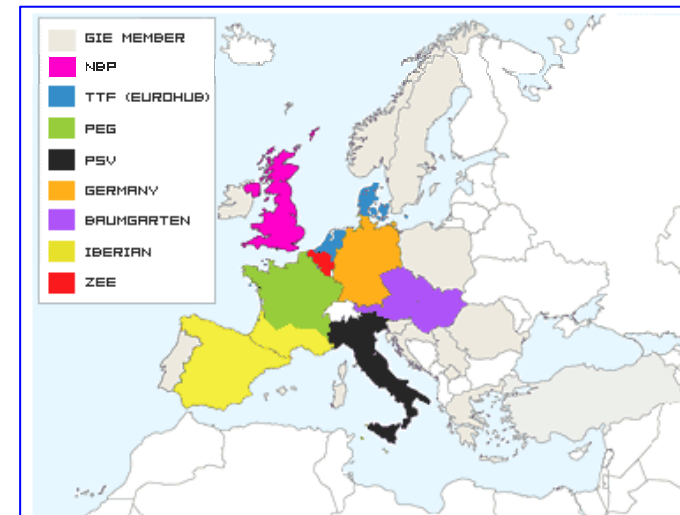
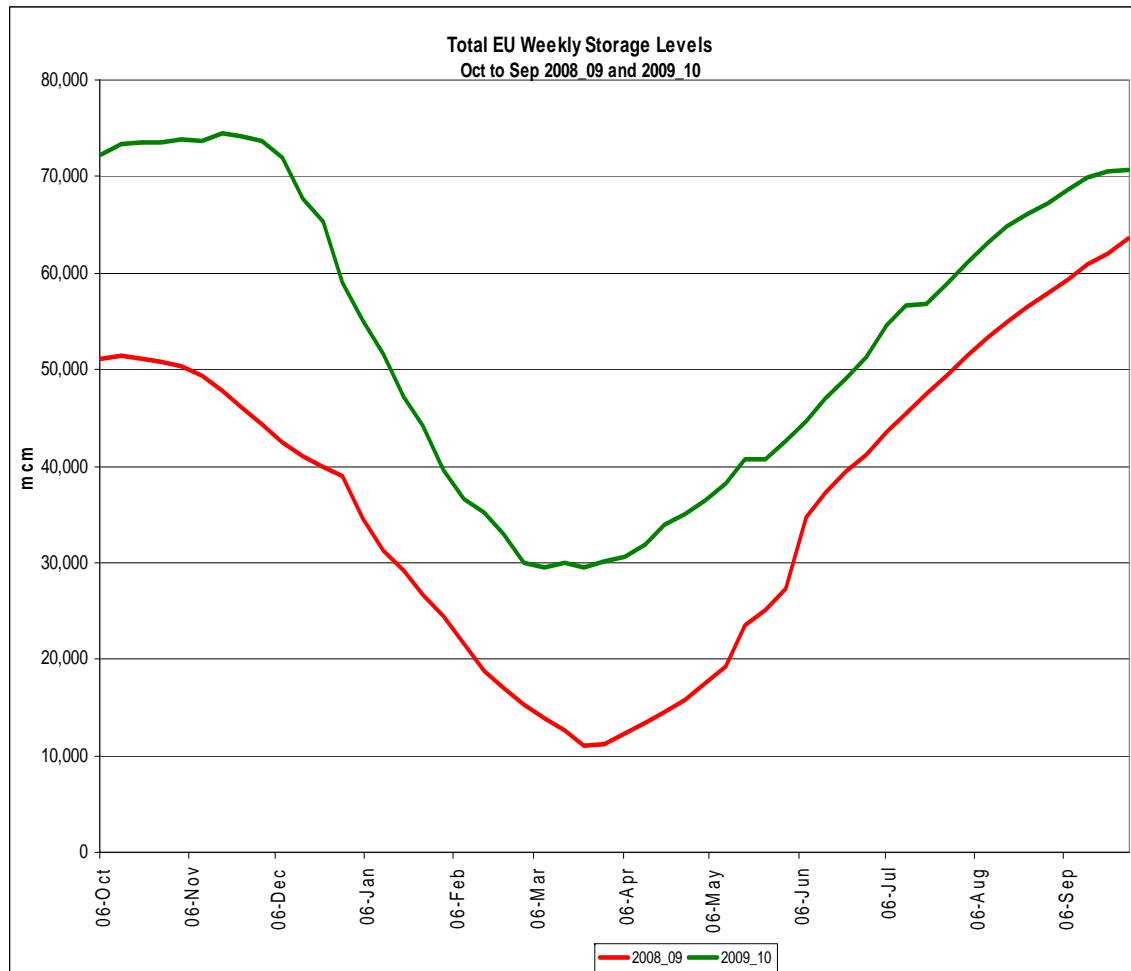
Storage Stocks - UK

From 1st October 2009 to 30th September 2010



Storage Stocks - EU

From 1st October 2009 to 30th September 2010



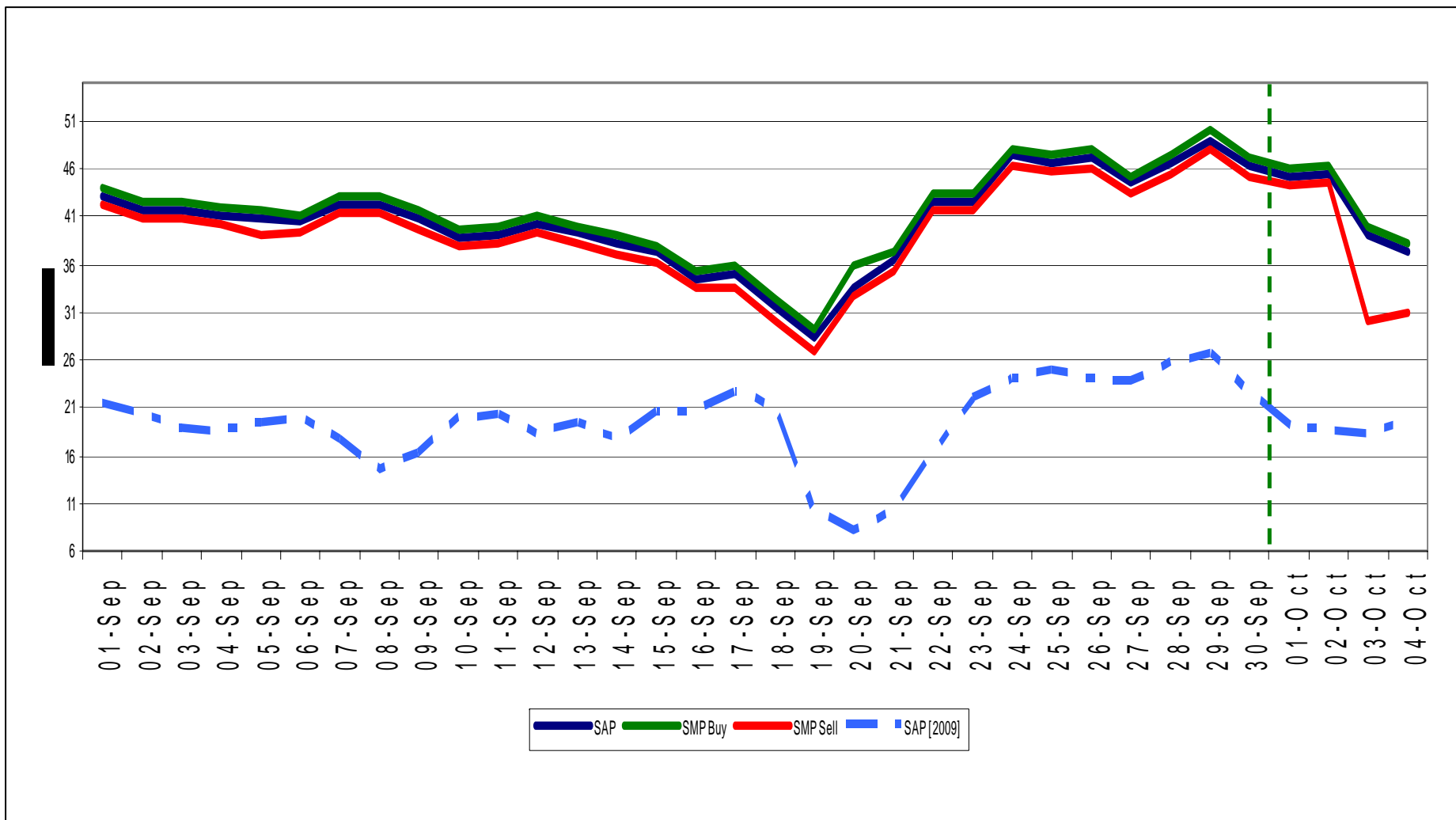
Hub Area	Stocklevel status at 06:00am CET on Monday 11.10.2010	
	WK 39	
	Stock Level	% Full
Baumgarten	13759,45 mcm	92,70 %
Germany	18348,57 mcm	94,45 %
Iberian	7396,00 mcm	93,10 %
NBP	4330,00 mcm	91,04 %
PEG	5972,00 mcm	87,57 %
PSV	14106,27 mcm	94,50 %
TTF (Eurohub)	1826,85 mcm	88,85 %
ZEE	625,39 mcm	95,48 %
TOTAL HUBS	66364,54	92,91 %

Transporter Actions and Neutrality



System Prices

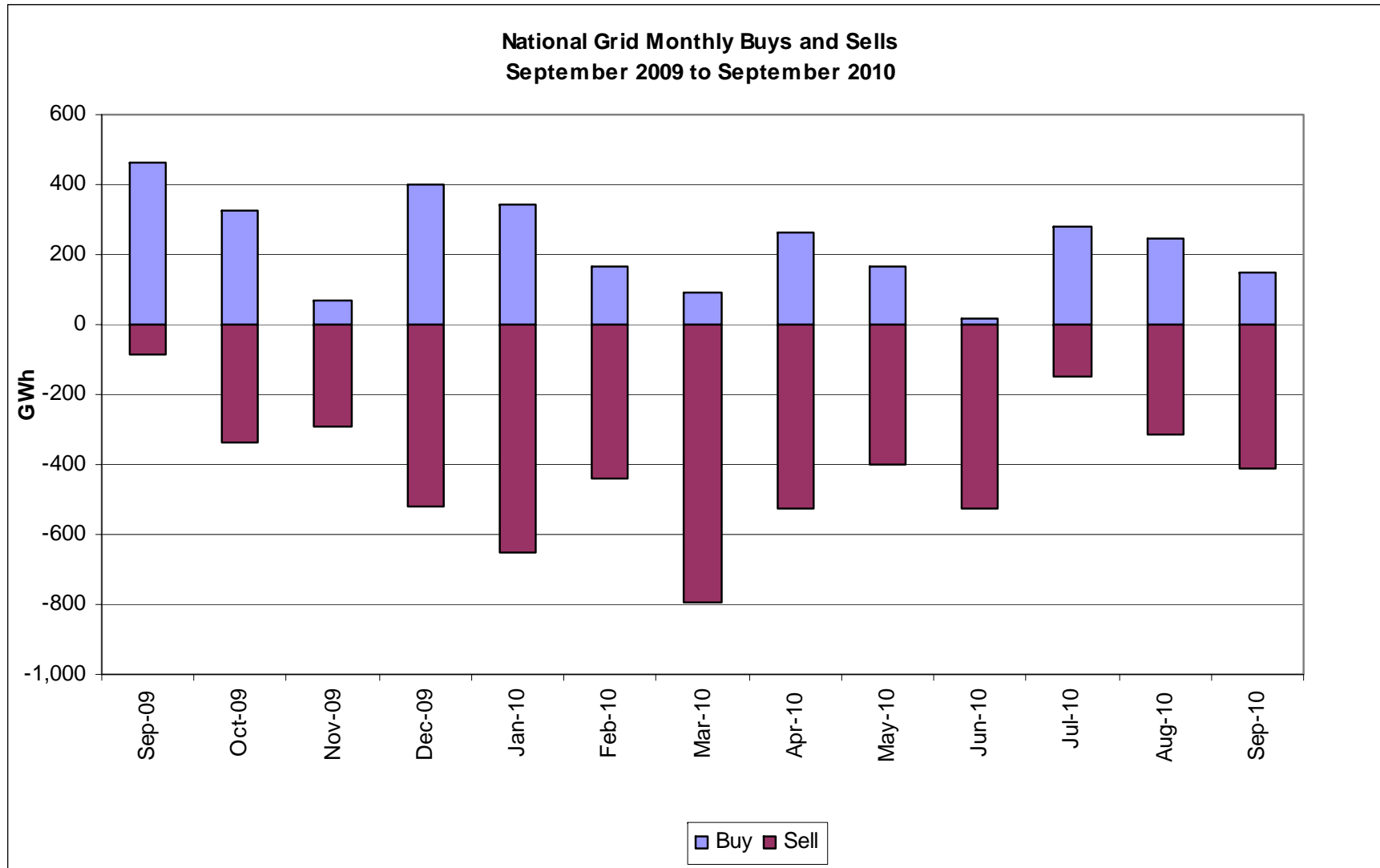
1st September to 4th October 2010



Transporter Energy Traded on the OCM

Buys and Sells by Month

From September 2009 to September 2010



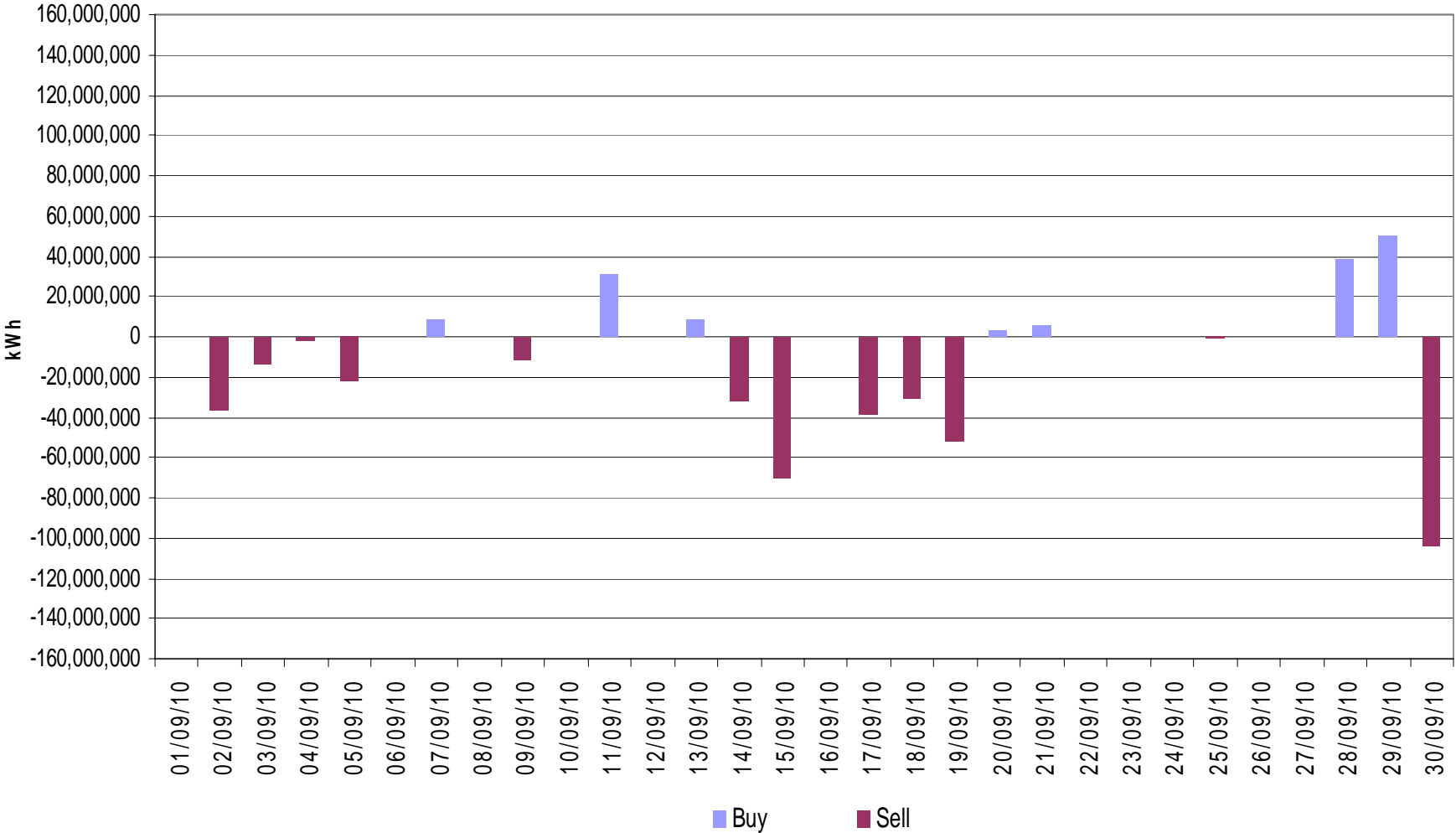
Transporter Energy Traded on the OCM



Buys and Sells by Day

THE POWER OF ACTION

From 1st September 2010 to 30th September 2010



Days of Default SMP Prices

From 1st September 2010 to 30th September 2010

Percentage of Days of Default SMP

SMP Buy

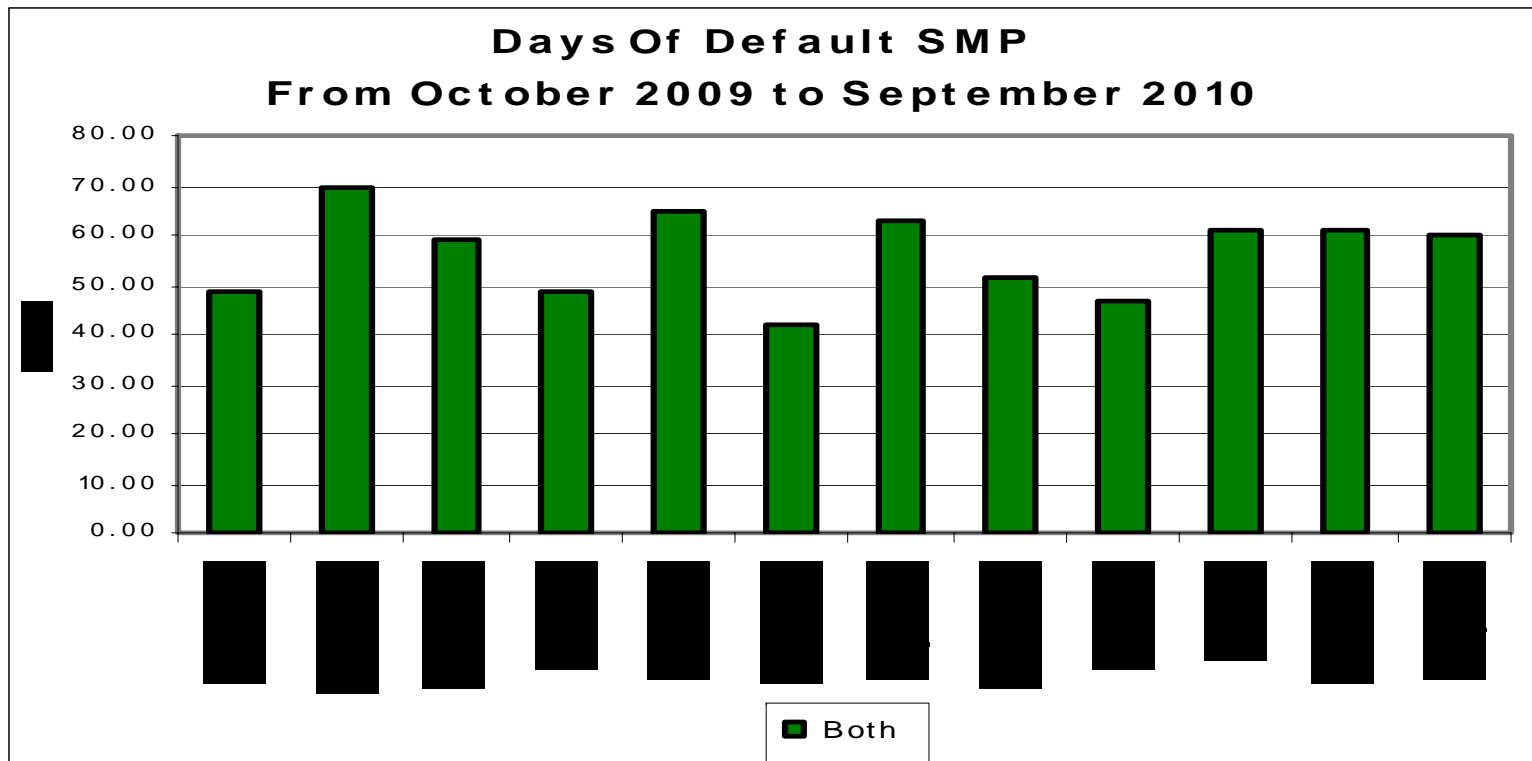
SMP Sell

Both

83.3%

70.0%

60.0%

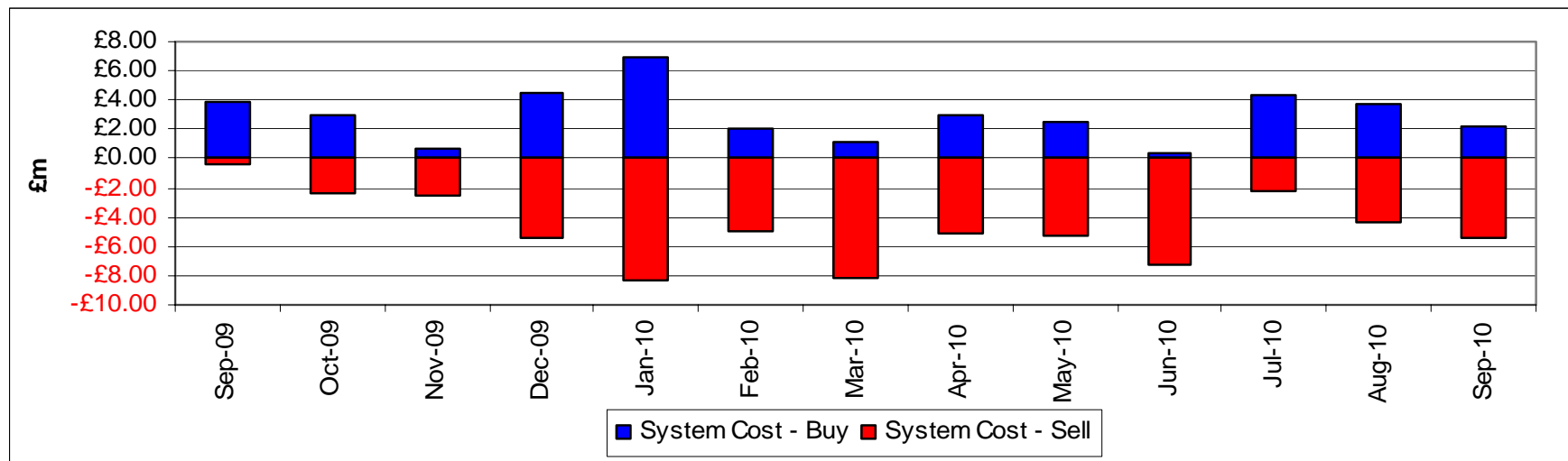


Transporter Actions on the OCM Mechanism

Revenues / Costs

From 1st October 2009 to 30th September 2010

	Quantity (TWh)	Average Price (p/KWh)	Average Price (p/therm)	Cost (£m)
System Buy	2.52	1.36	39.84	£34.22
System Sell	-5.36	1.15	33.56	-£61.38
Net Position	-2.84 Sell			-£27.16

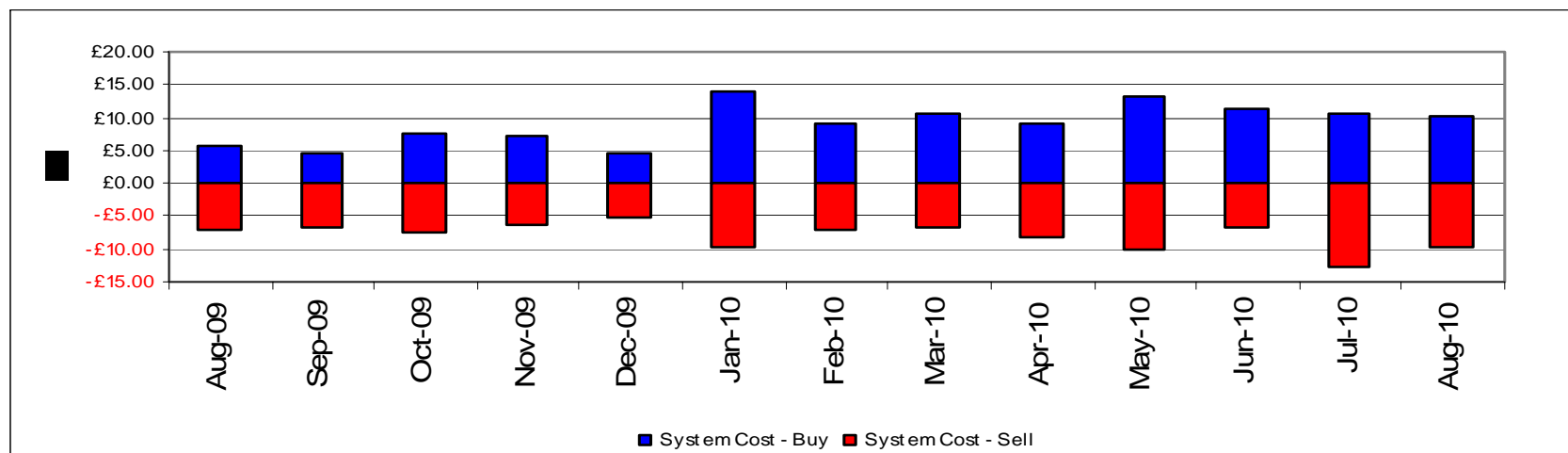


Shipper Imbalances

Revenues / Costs

From 1st October 2009 to 31st August 2010

System	Quantity (TWh)	Average Price (p/KWh)	Average Price (p/therm)	Cost £m
System Buy Shipper overdelivery/cost to neutrality	9.94	1.15	33.62	£114.11
System Sell Shipper underdelivery/revenue to neutrality	-7.68	1.24	36.44	-£95.50
Net Position	2.26 Buy			£18.61



Scheduling Revenues

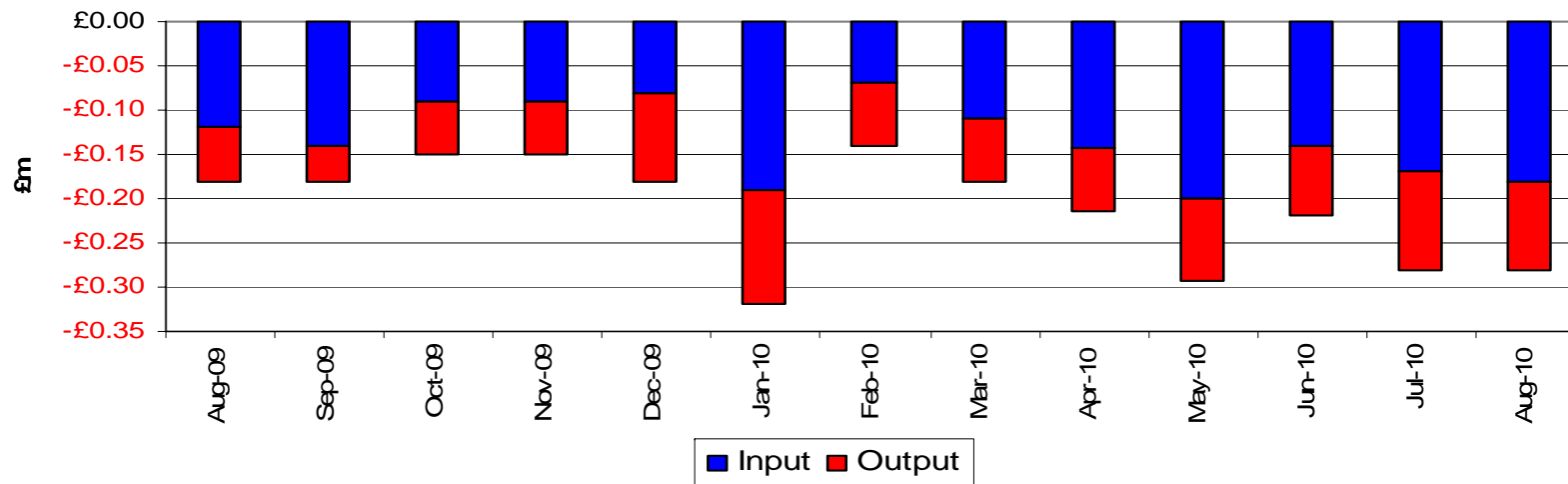
From 1st October 2009 to 31st August 2010

Cost £m

Input -£1.47

Output -£0.94

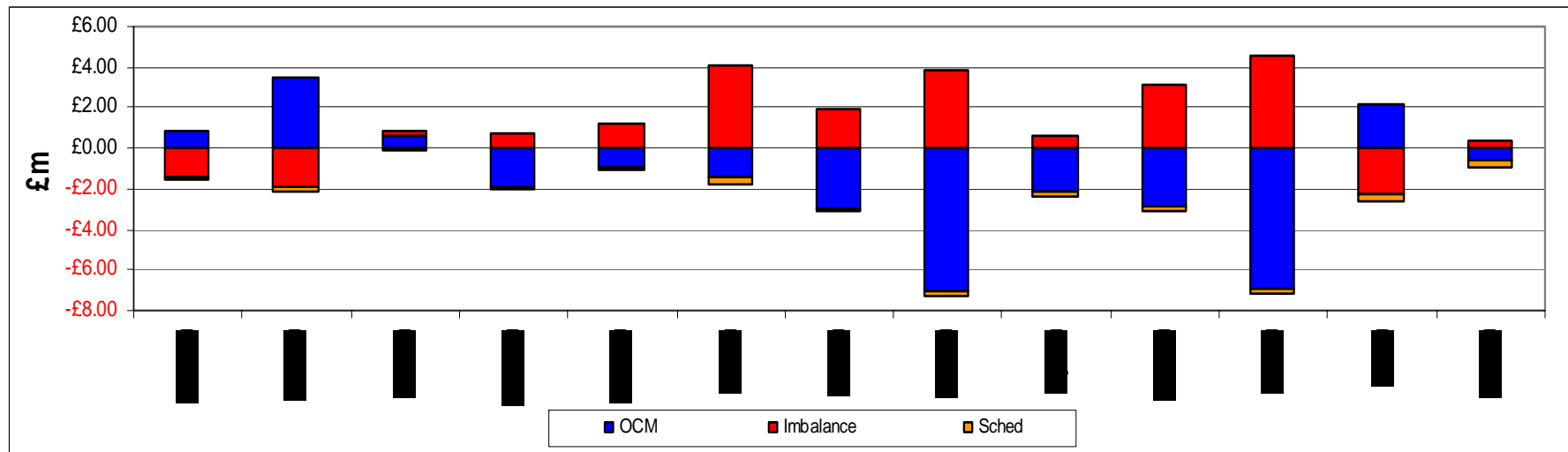
Total -£2.41



Balancing Costs

From 1st October 2009 to 31st August 2010

	£m
Transporter actions on OCM	-24.03
Imbalance Charge	18.61
Scheduling Charge	-2.41
<hr/>	
Balancing Cost	-7.83

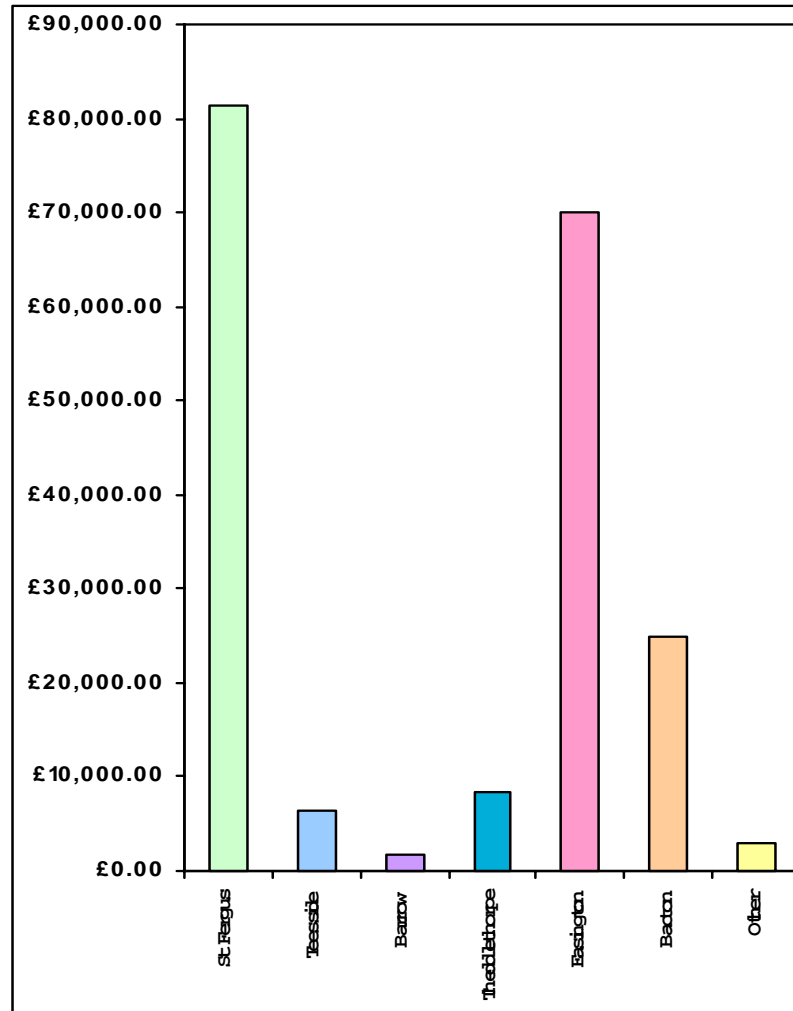


Capacity Neutrality

Revenues from DSEC and DAI

From 1st April 2010 to 31st August 2010

ASEP	Revenue
St Fergus	-£81,463.62
Teesside	-£6,523.25
Barrow	-£1,629.47
Theddlethorpe	-£8,329.98
Easington	-£69,997.97
Bacton	-£25,016.64
Other	-£2,861.65
TOTAL	-£195,822.57



Capacity Neutrality

Prompt Buy Backs

From 1st April 2010 to 31st August 2010

ASEP	Cost	No.of days	Volume (kWh)
St Fergus	£0	0	0
Teesside	£0	0	0
Barrow	£0	0	0
Theddlethorpe	£0	0	0
Easington	£0	0	0
Bacton	£0	0	0
TOTAL	£0	0	0

Capacity Neutrality Net Cost / Revenue

From 1st April 2010 to 31st August 2010

DSEC/DAI Revenue	-195,822.57
Buy back costs	£0.00
Capacity Management Agreement	£0.00
Entry Capacity Overrun Revenue *	-£92,647.46
Net Revenue	-£288,470.03

* Excluding Entry Capacity Overrun Charges from April 2010


MIPI European Transparency Project (ETP) Reminder

- MIPI ETP was set up to manage National Grid’s compliance with the implementation of the EU 3rd Package
 - Key requirement is for data consistency & transparency across TSOs
 - Project builds on the existing MIPI platform and provides opportunity to update some system functionality & graphs
 - Including the systematisation of the new Zonal Linepack Report
 - Published within the Operational Summary area of the National Grid website in accordance with UNC Modification 195AV
 - Requirement to publish on D+1 & D+6 the Linepack for each hour for each NTS Linepack Zone.

D+1 Data	ZONE00	ZONE01	ZONE02	ZONE03	ZONE04	ZONE05	ZONE06	ZONE07	ZONE08	ZONE09	ZONE10	ZONE11	Total
06:00	46.2620	29.9297	32.3081	53.2831	36.4489	36.1256	12.6178	37.1230	7.3243	11.5899	7.9671	28.5099	339.4892
07:00	46.6149	29.9863	32.5080	53.2587	36.5677	36.3048	12.6501	37.1907	7.4118	11.7052	8.0560	28.5477	340.8018
08:00	46.7196	30.0195	32.5447	53.2456	36.5915	36.3832	12.6700	37.2607	7.5226	11.8213	8.1445	28.5518	341.4750
09:00	46.7137	30.0426	32.5054	53.1978	36.5889	36.3019	12.6678	37.3129	7.5908	11.8073	8.1938	28.4622	341.3852
10:00	46.6983	30.0659	32.4773	53.1624	36.5296	36.1966	12.6591	37.3120	7.6052	11.8106	8.2023	28.4632	341.1823
11:00	46.8240	30.0762	32.4729	53.1600	36.4985	36.0769	12.6464	37.3089	7.6215	11.7846	8.2034	28.5027	341.1760
12:00	46.8928	29.9823	32.4789	53.1956	36.8990	36.0743	12.6393	37.2534	7.6196	11.8232	8.2091	28.5352	341.6025
13:00	46.8785	29.7507	32.4037	52.8641	37.5701	36.0728	12.6526	37.1770	7.6240	11.8364	8.2132	28.4977	341.5409

MIPI European Transparency Project (ETP) Reminder (cont...)

- Current planned implementation date of 15th November will be dependant upon successful testing
- For further information on the changes see the Operational Data section of the National Grid website:-



About the Gas industry
Pipeline Projects
Connections
Operational Data

Prevailing View
Data Item Explorer
Report Explorer
Energy - Flow Data
Entry Capacity Auction Publications
Exit Capacity Application Publications
Transitional Exit Capacity Reports
Capacity Auction Information
Storage Information

Operational Data

Welcome to the Network Operations, Operational Data Site

This section of our site provides access to Operational Data to all relevant industry stakeholders. The aim of this site is to reduce market uncertainty, reinforce equal access to information, and increase information transparency, facilitating efficiency in the capacity and energy markets whilst providing equitable and timely access to its operational and market information.

Please forward any queries or suggestions, relating to the website, to Network Operations, through the **Feedback form**.

For data enquiries that require urgent attention, please contact us on our new number: **01926 65 6474**. Please note that this service will only be available during office hours of 09:00 to 16:30 on weekdays. During out of office hours there is an answer phone service on this number.

Market Information Provision Initiative European Transparency Project (MIPI ETP) is due to go live in November 2010.

For more information please see the **MIPI ETP Presentation**.

Recent News

Feedback

If you have any queries or suggestions relating to the Operational Data website, please forward them to Network Operations.

- **Operational Data Feedback form**

Paltington The
European Transparency Project
Find out how this affects you ▶