

System Management Principles Statement



- Compliance report for March 2013
- Summary of balancing actions and breaches for March 2013
- Performance compared to last year

Summary Report

	Apr-13	May-13	Jun-13
Total Number of Buy Actions	12	18	15
Total Number of Sell Actions	24	8	17
Total	36	26	32

	Apr-13	May-13	Jun-13
Number of Material Breaches	0	0	0
Number of Non-Material Breaches	0	0	0

	Jun-13	Jun-12
Number of Balancing Actions (Calendar year to date)	221	205
Number of Material Breaches (Calendar year to date)	0	0
Number of Non-Material Breaches (Calendar year to date)	0	0

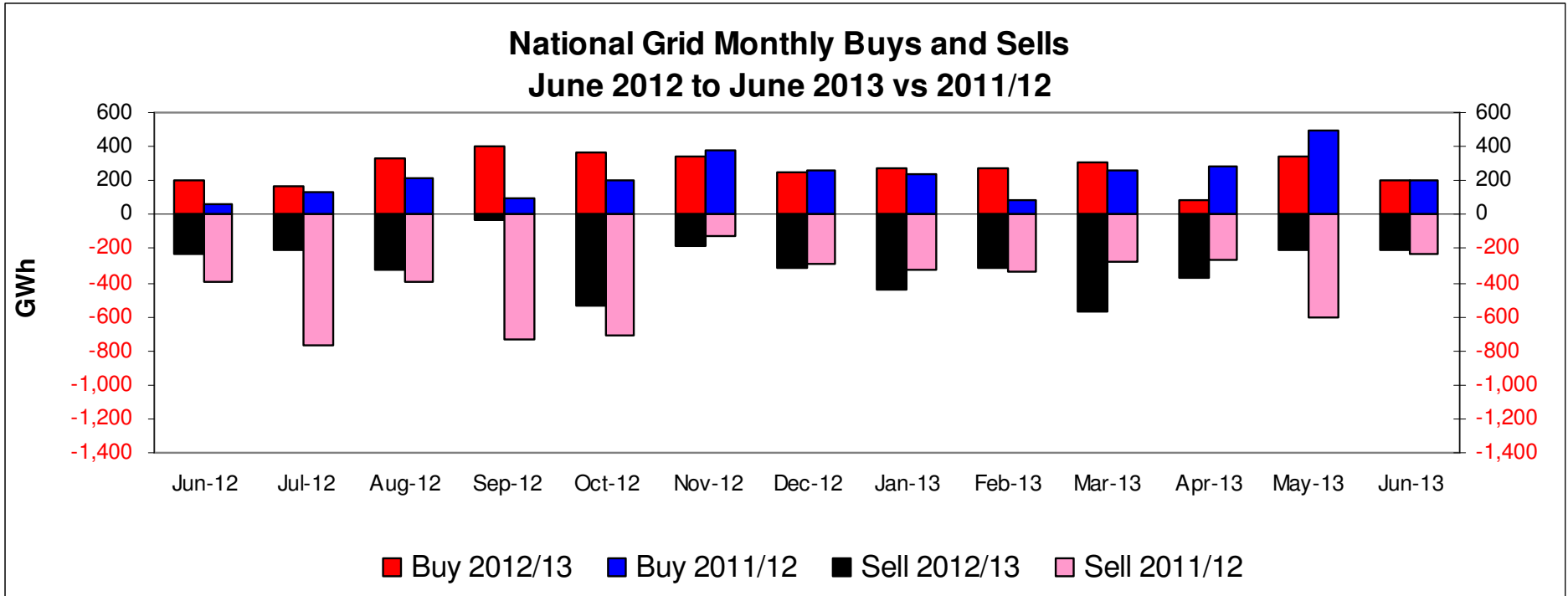
Transporter Actions and Neutrality



- Energy Balancing
- Capacity

Transporter Energy Traded on the OCM

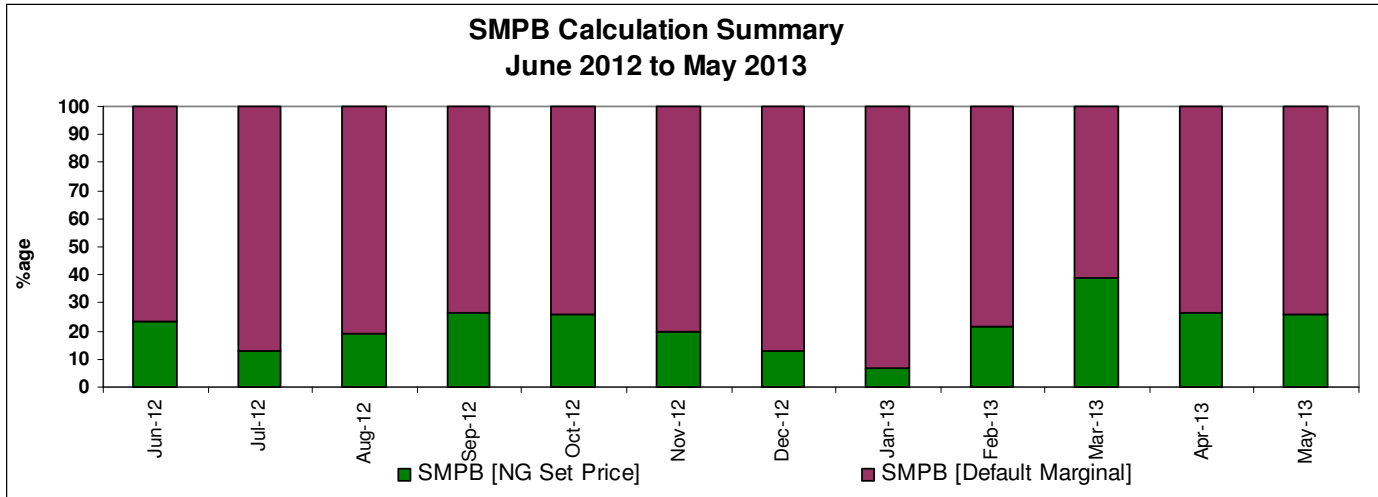
June 2012 to June 2013



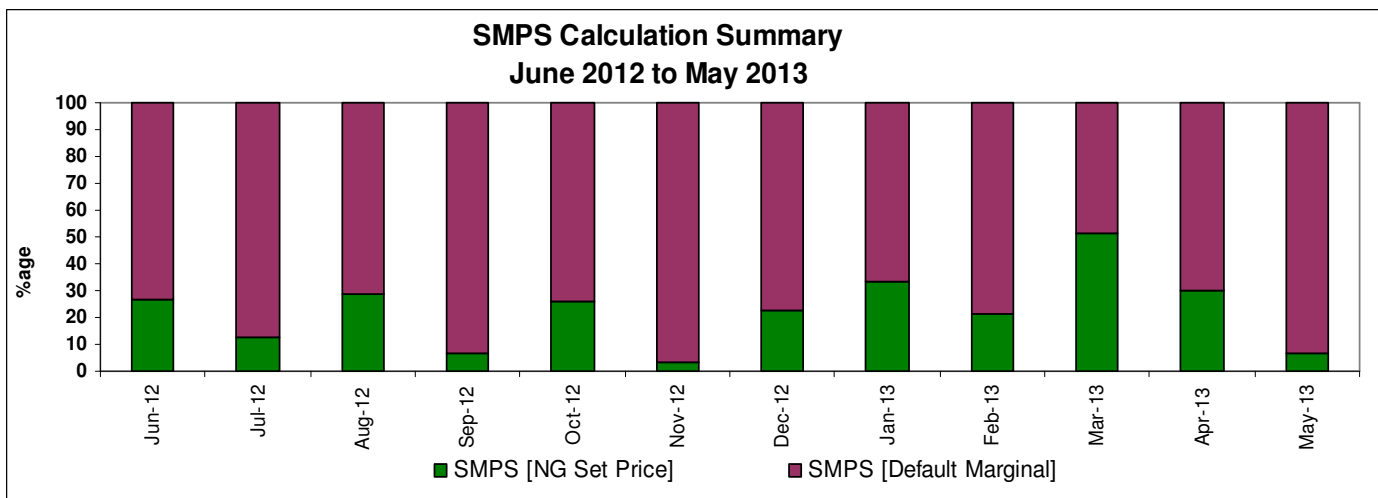
Year	Buy [GWh]	Sell [GWh]
2013 [YTD]	1485	-2107
2012	3405	-3624

Days of Default SMP Prices

From June 2012 to May 2013



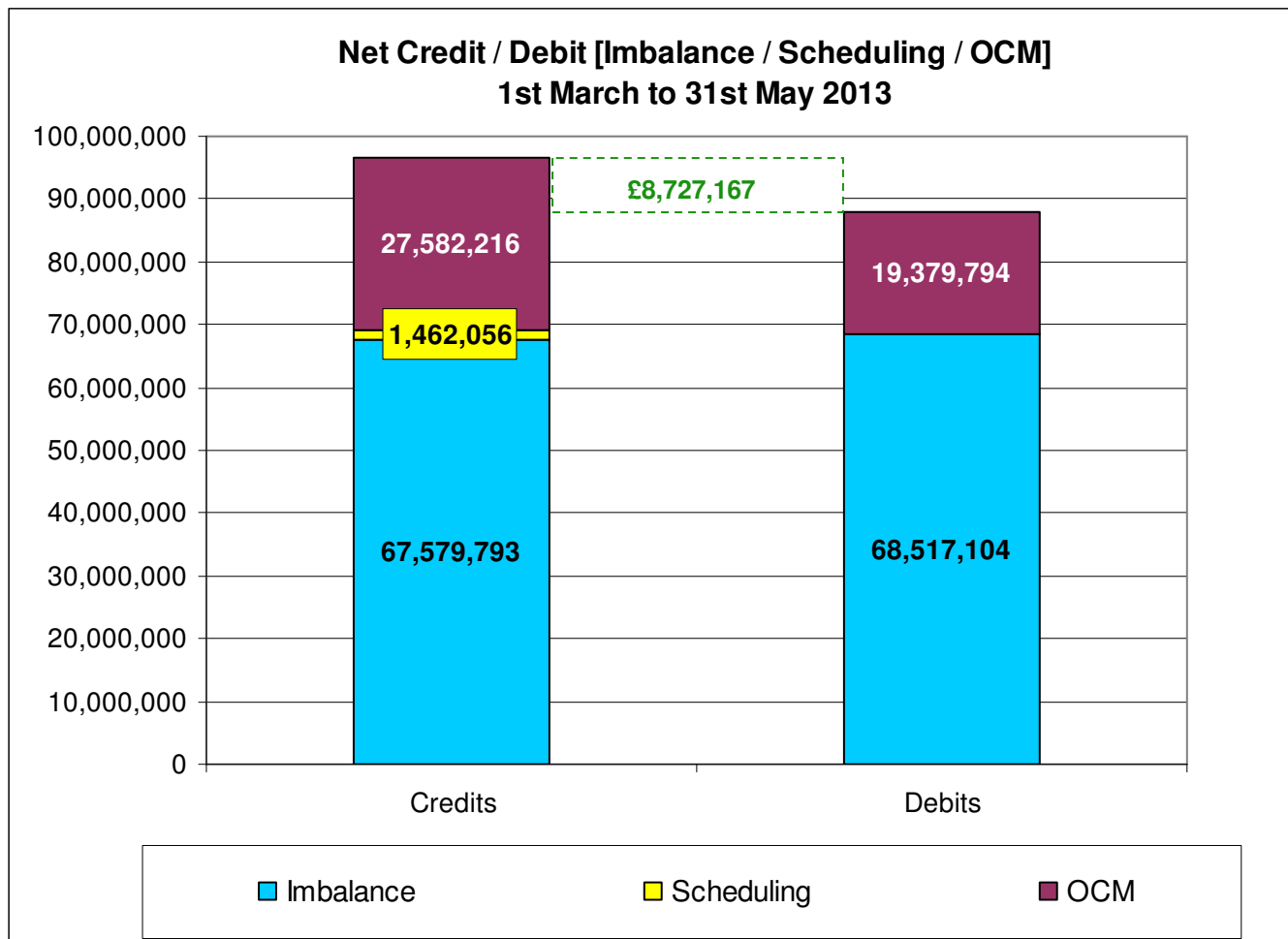
Month	SMPB	SMPS	Both
May 13	74%	94%	71%



Energy Balancing – Balancing Costs

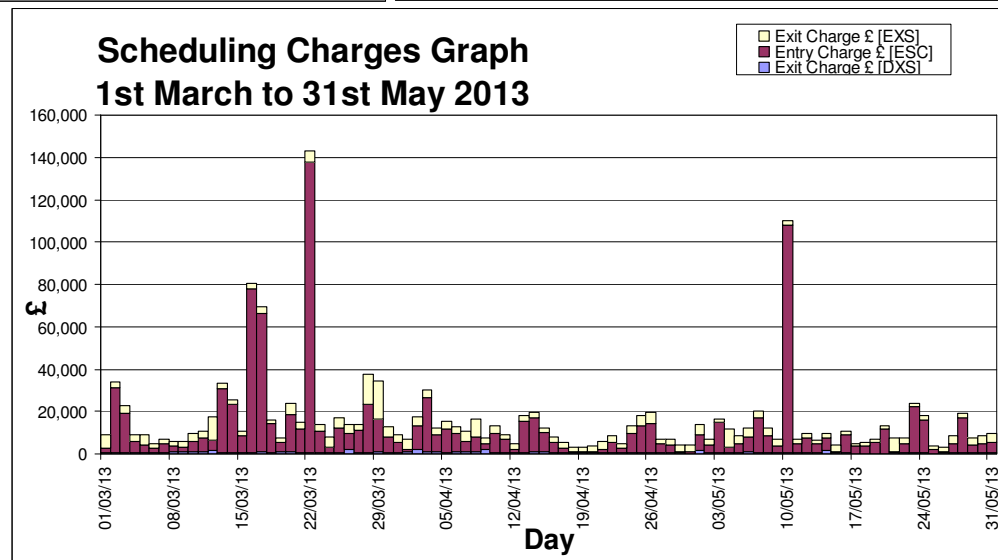
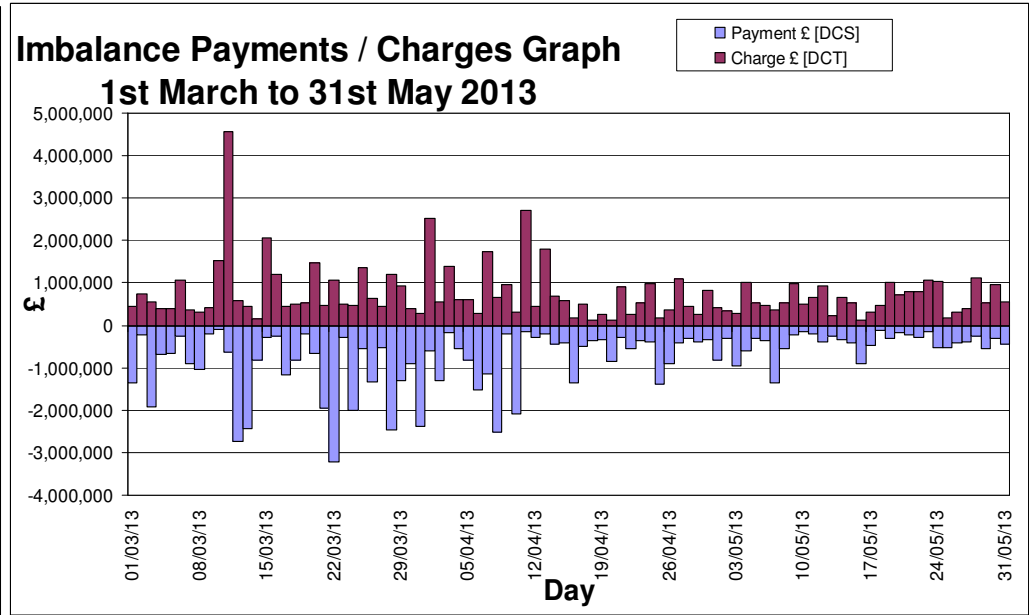
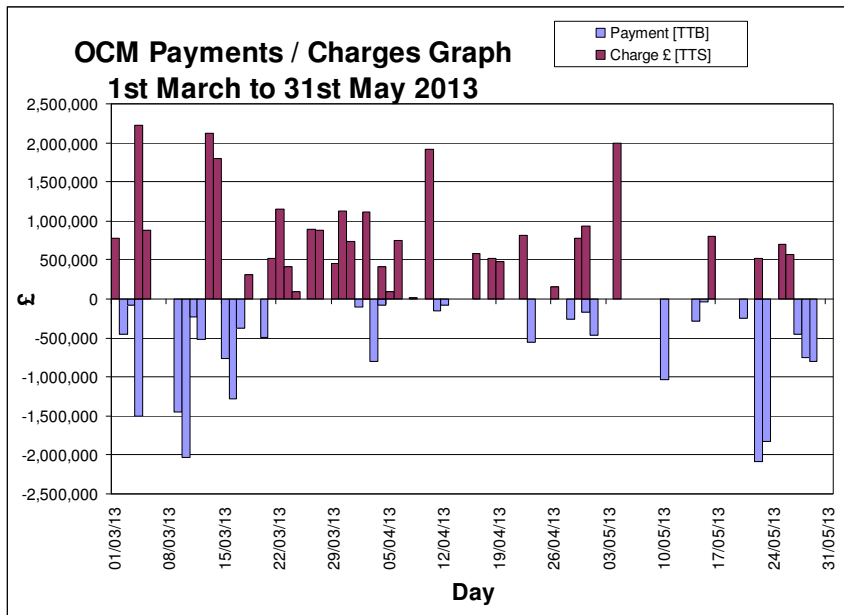
March - May 2013

Month	Imbalance		Scheduling			OCM		Balancing Costs
	Payment £ [DCS]	Charge £ [DCT]	Exit Charge £ [DXS]	Exit Charge £ [EXS]	Entry Charge £ [ESC]	Payment £ [TTB]	Charge £ [TTS]	Net £
Mar-13	-34,236,160	25,903,556	24,357	137,826	566,399	-9,189,012	14,398,359	-2,394,675
Apr-13	-21,043,504	22,900,172	20,974	99,705	200,692	-2,205,854	8,595,491	8,567,676
May-13	-13,237,440	18,776,065	14,849	89,307	307,947	-7,984,929	4,588,367	2,554,166



Energy Balancing – Balancing Costs

March - May 2013



Capacity Neutrality

Net Cost / Revenue From 1st April 2013 to 31st May 2013

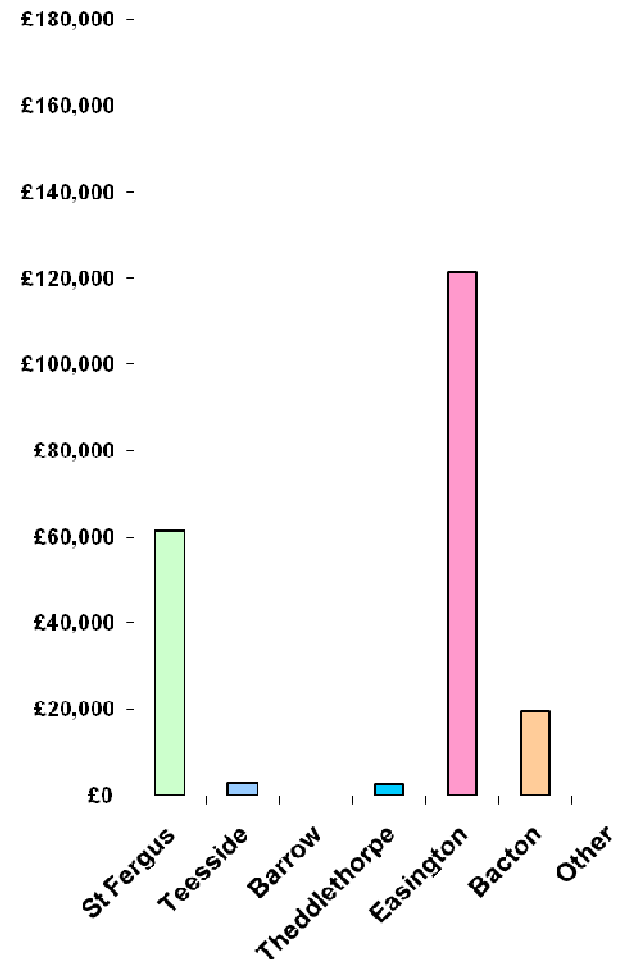
	Revenue/Costs
WDDSEC/DAI Entry Capacity	-£208,107
Total Entry Constraint Management Operational Costs	£0
Entry Capacity Overrun Revenue (As at May 13)	-£12,348
Non-Obligated Sales Revenue (Entry only)	-£175
Revenue from Locational Sells and PRI Charges	£0
Net Revenue	-£220,630

Capacity Neutrality

Revenues from WDDSEC and DAI, Buybacks and Capacity Management Agreement
 From 1st April 2013 to 31st May 2013

ST FERGUS	-£61,463
TEESSIDE	-£3,060
BARROW	£0
THEDDLETHORPE	-£2,681
EASINGTON	-£121,216
BACTON	-£19,687
OTHER	£0
Net Revenue	-£208,107

Capacity Neutrality
 Revenues from WDDSEC and DAI
 April 2013 to May 2013



Capacity Neutrality

Revenues from Entry Cap Overruns and Non-Obligated Sales,
and Locational Sells and PRI Charges.

Totals From 1st April 2013 to 31st May 2013



Month	Entry Cap Overrun Revenue	Non-obligated sales revenue (entry)
Mar-13	128,524	£322,297
Apr-13	£4,972	£175
May-13	£7,376	-
Jun-13	-	-
Jul-13	-	-
Aug-13	-	-
Sep-13	-	-
Oct-13	-	-
Nov-13	-	-
Dec-13	-	-
Jan-14	-	-
Feb-14	-	-
Mar-14	-	-
Total	£12,348 (FY12-13)	£175 (FY12-13)

Month	Locational Sells and PRI charges revenue
Mar-13	£847,334
Apr-13	£0
May-13	£0
Jun-13	-
Jul-13	-
Aug-13	-
Sep-13	-
Oct-13	-
Nov-13	-
Dec-13	-
Jan-14	-
Feb-14	-
Mar-14	-
Total	£0 (FY12/13)

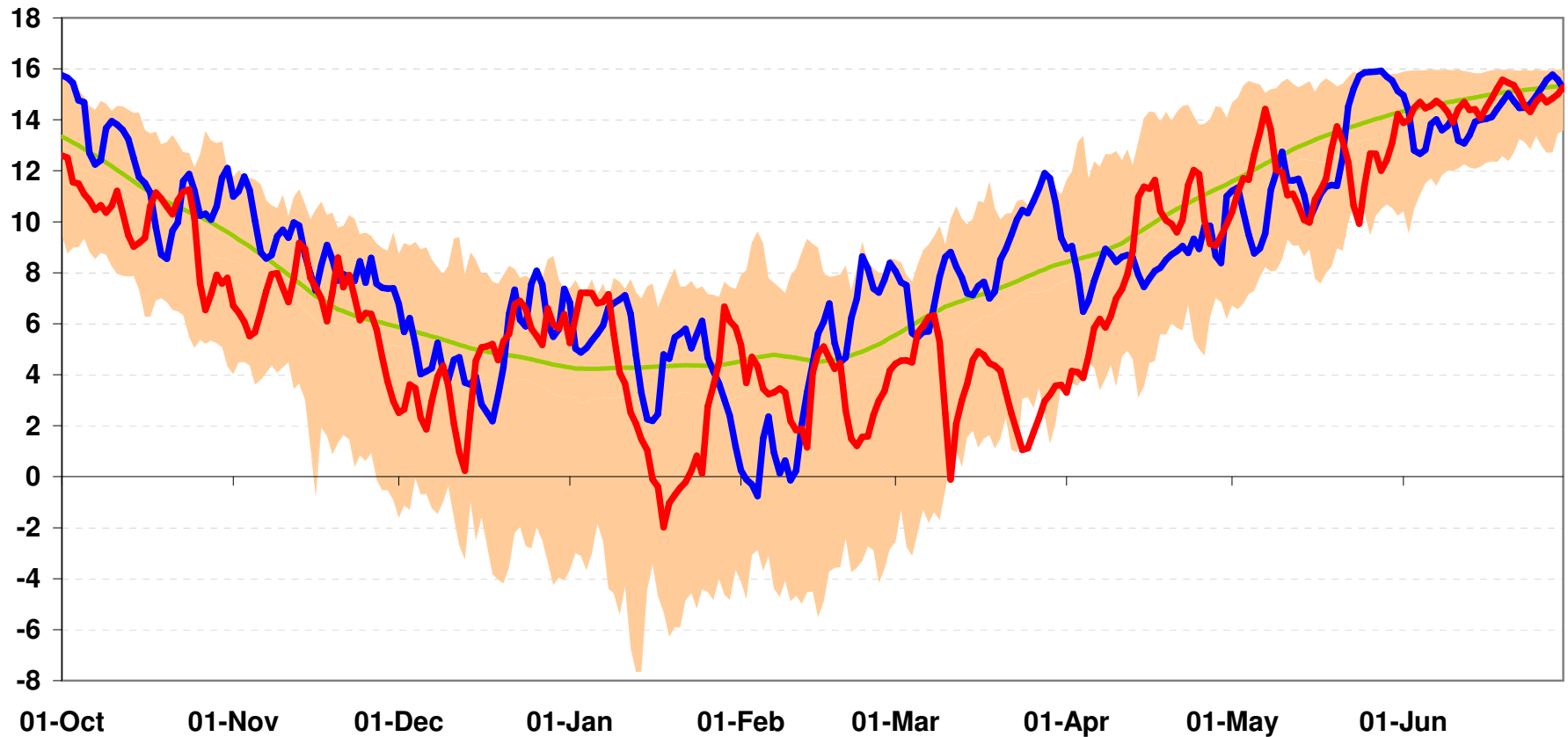
Operational Overview



National Composite Weather

October to July 2012/13 vs. Historical Range

National Composite Weather 2012/13 compared to 2011/12 and historical range

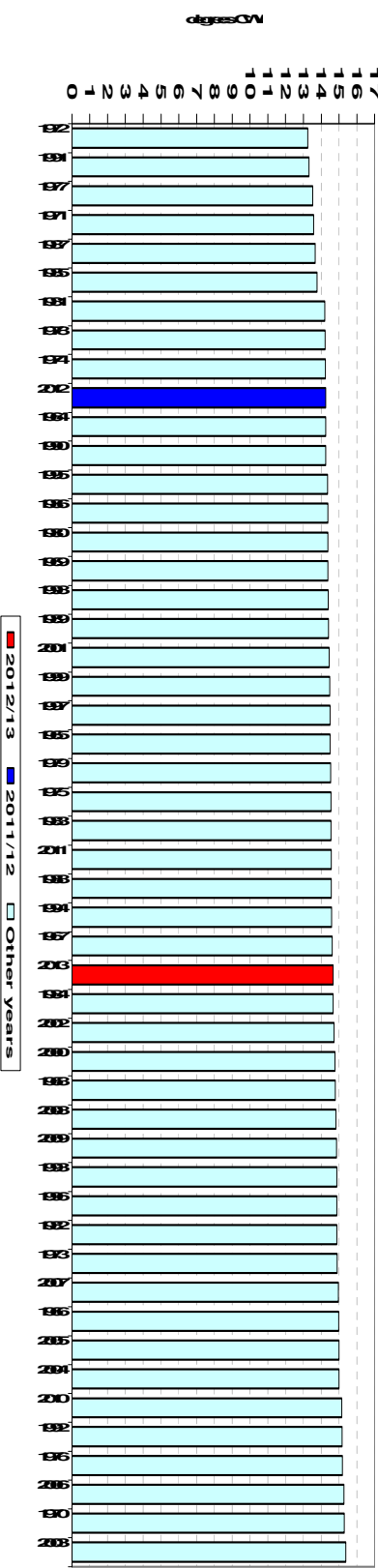
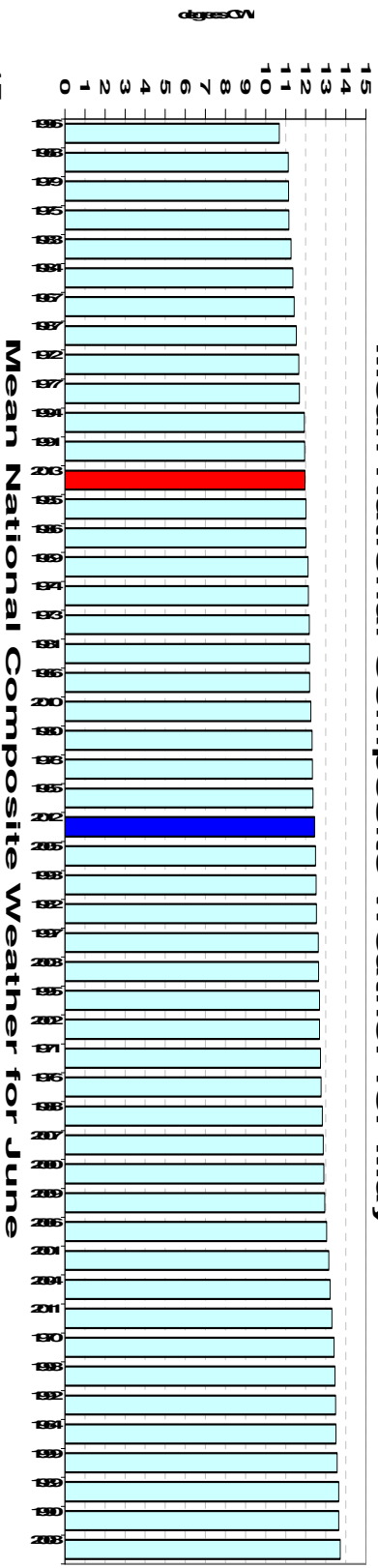
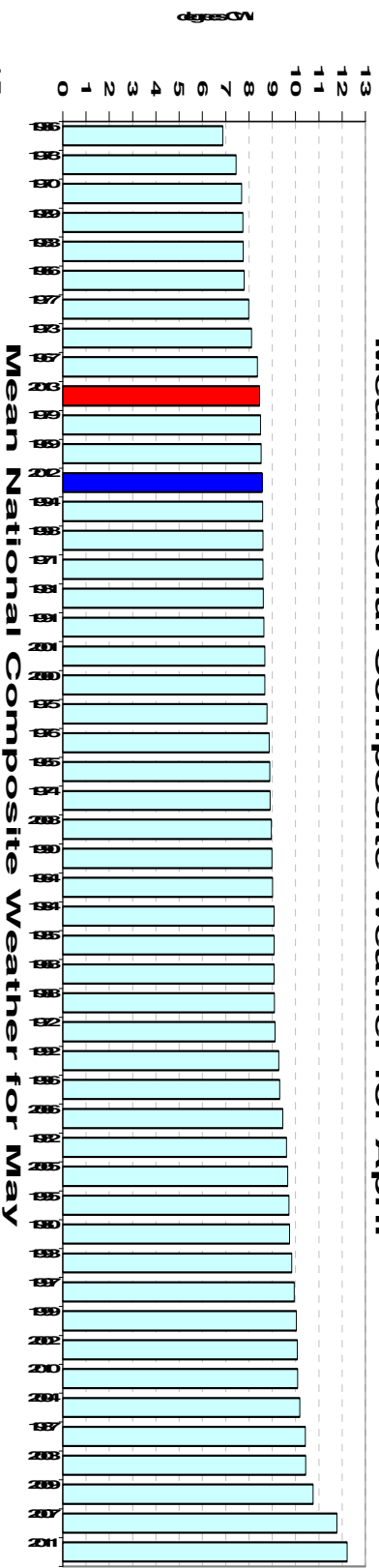


Historical range 2012/13 2011/12 Seasonal Normal

Mean Composite Weather Variables

April 2013 vs. Previous Yrs

Mean National Composite Weather for April



2012/13 2011/12 Other Years

Demands

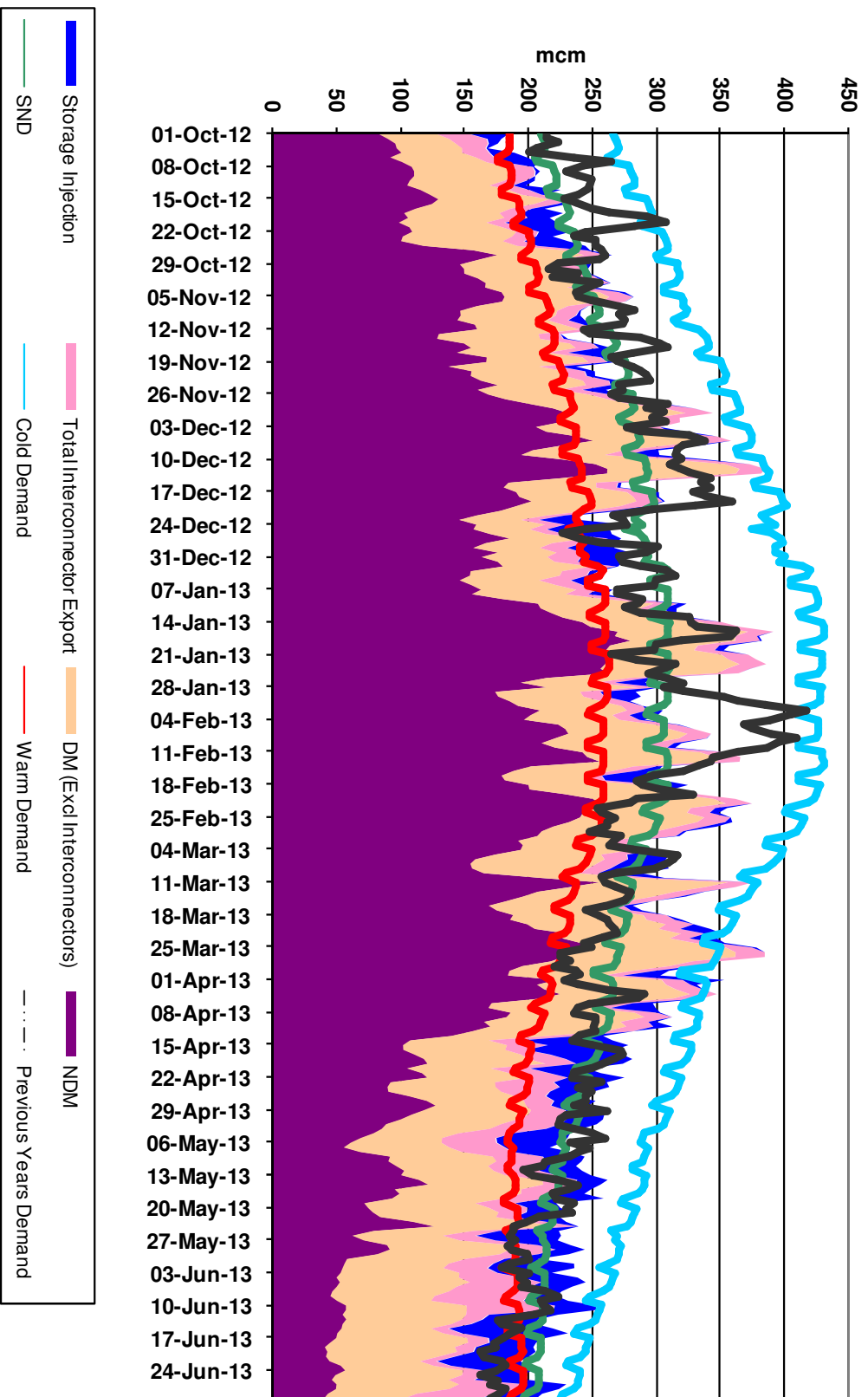


Gas Demand Breakdown

1st Oct 2012 to 30th June 2013

Gas Demand Breakdown

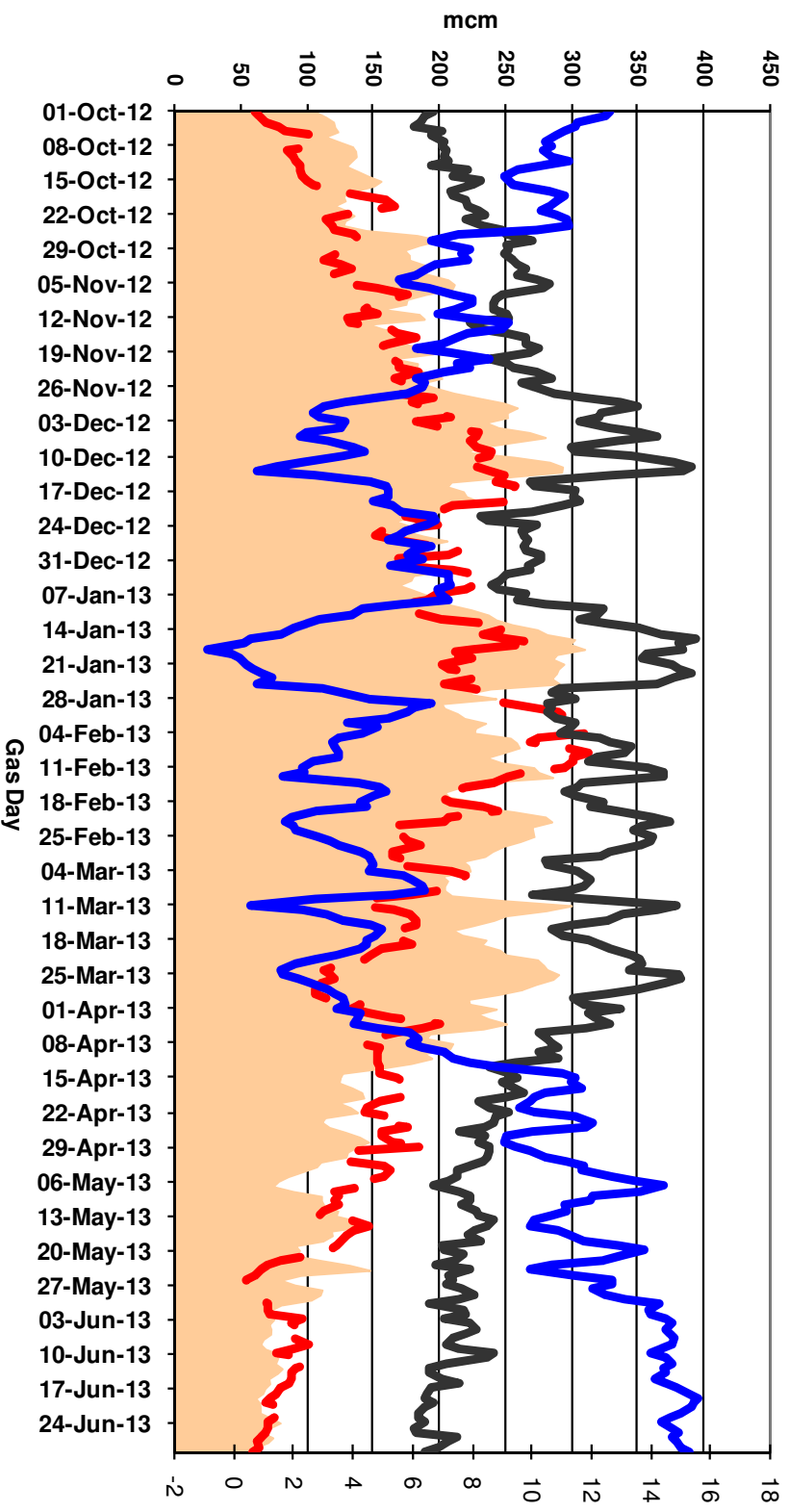
1st October 2012 to 30th June 2013 vs 2011/12



LDZ Demand

1st Oct 2012 to 30th June 2013

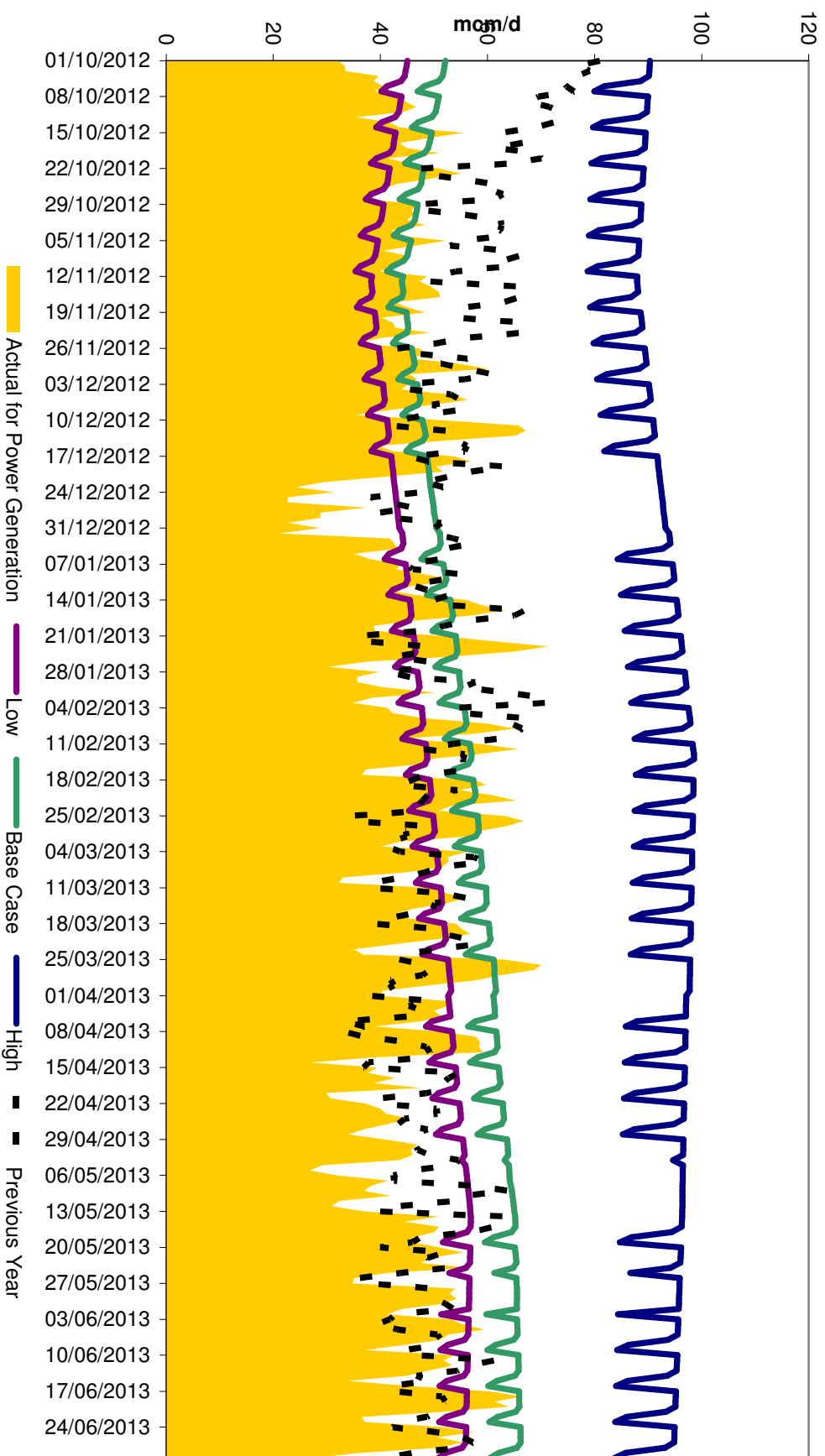
Gas Demand Breakdown [LDZ 2012/13 vs 2011/12] vs NTS Demand / CWV's
1st October 2012 to 30th June 2013



Power Generation

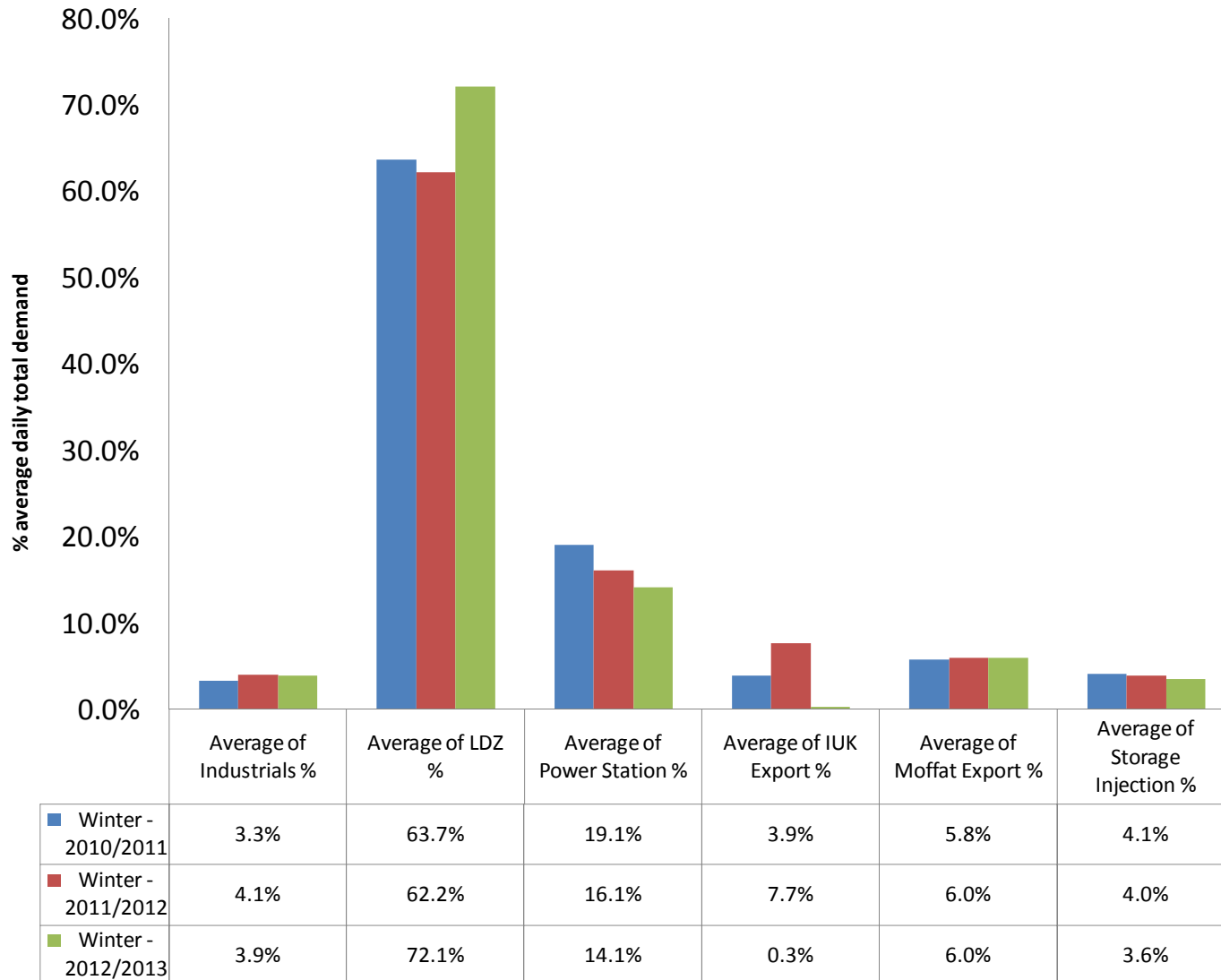
1st October 2012 to 30th June 2013

Gas Consumption for Power Generation



Demand Mix

Average daily winter demand - as %



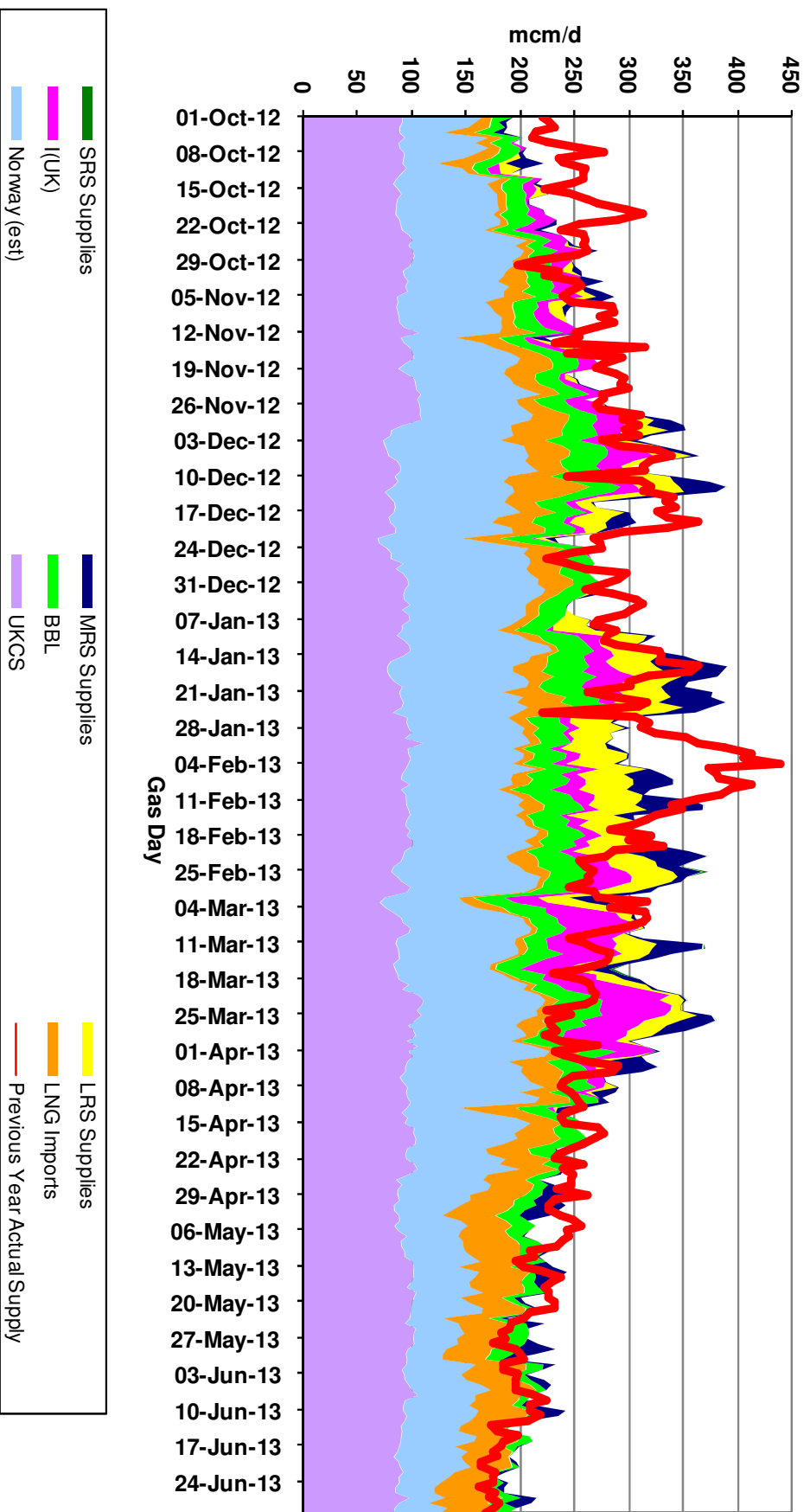
Supplies



Gas Supply Breakdown

1st Oct 2012 to 30th June 2013

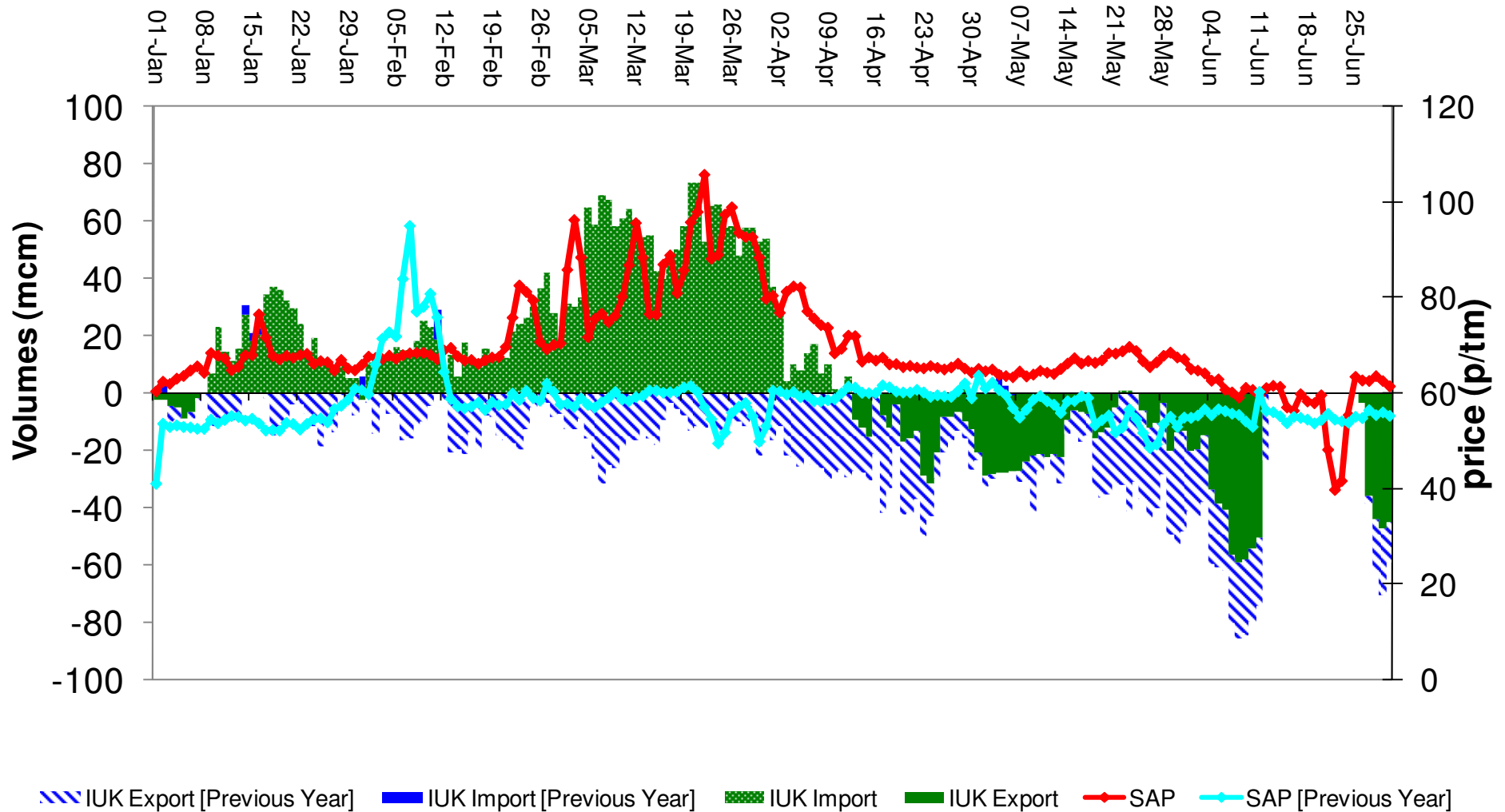
Gas Supply Breakdown
1st October 2012 to 30th June 2013



Gas Supply Breakdown – IUK

1st Jan to 30th June 2013

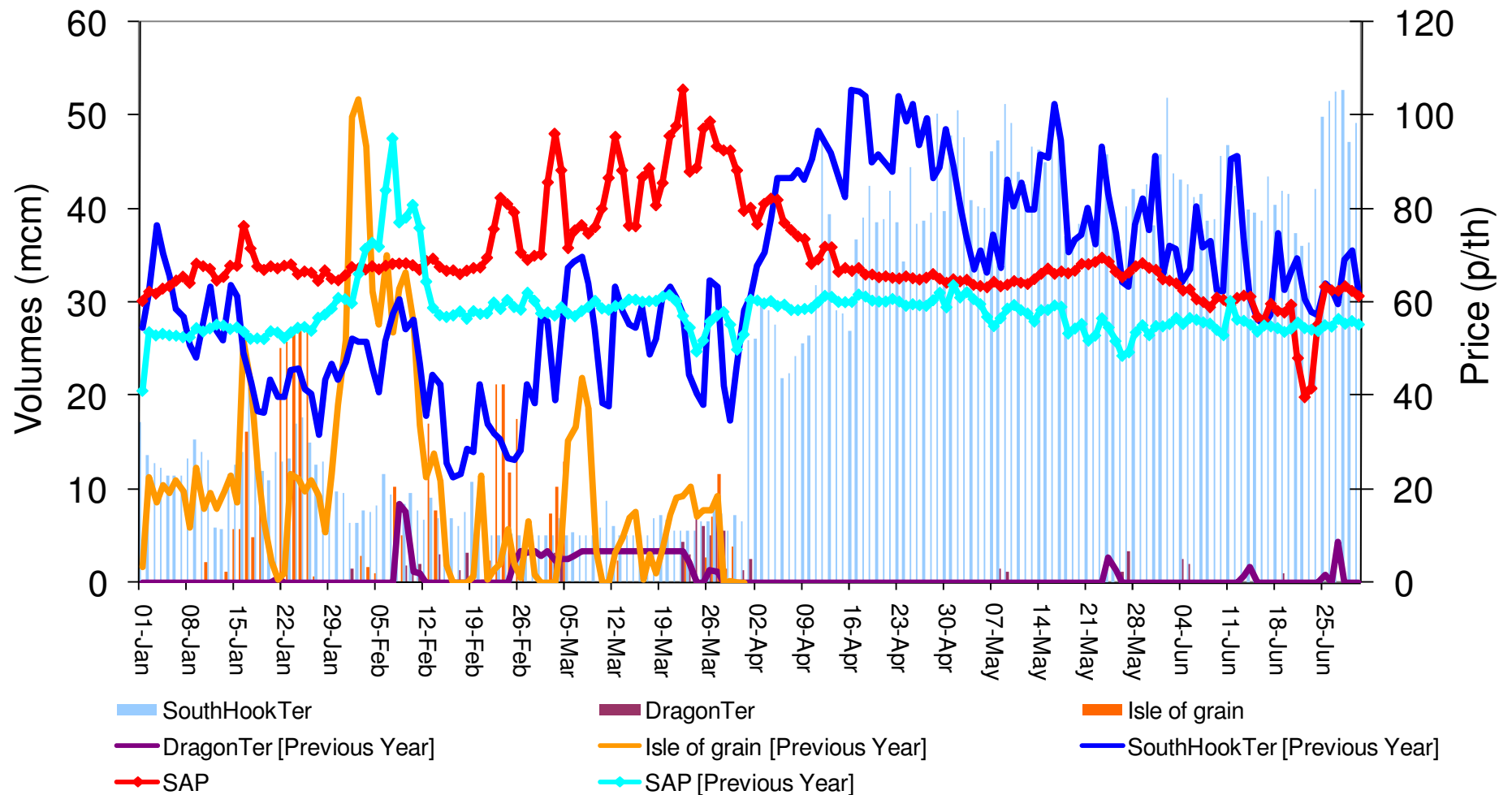
IUK Export / Import volumes Jan - Jun 2013 vs Previous Year / SAP



Gas Supply Breakdown – LNG

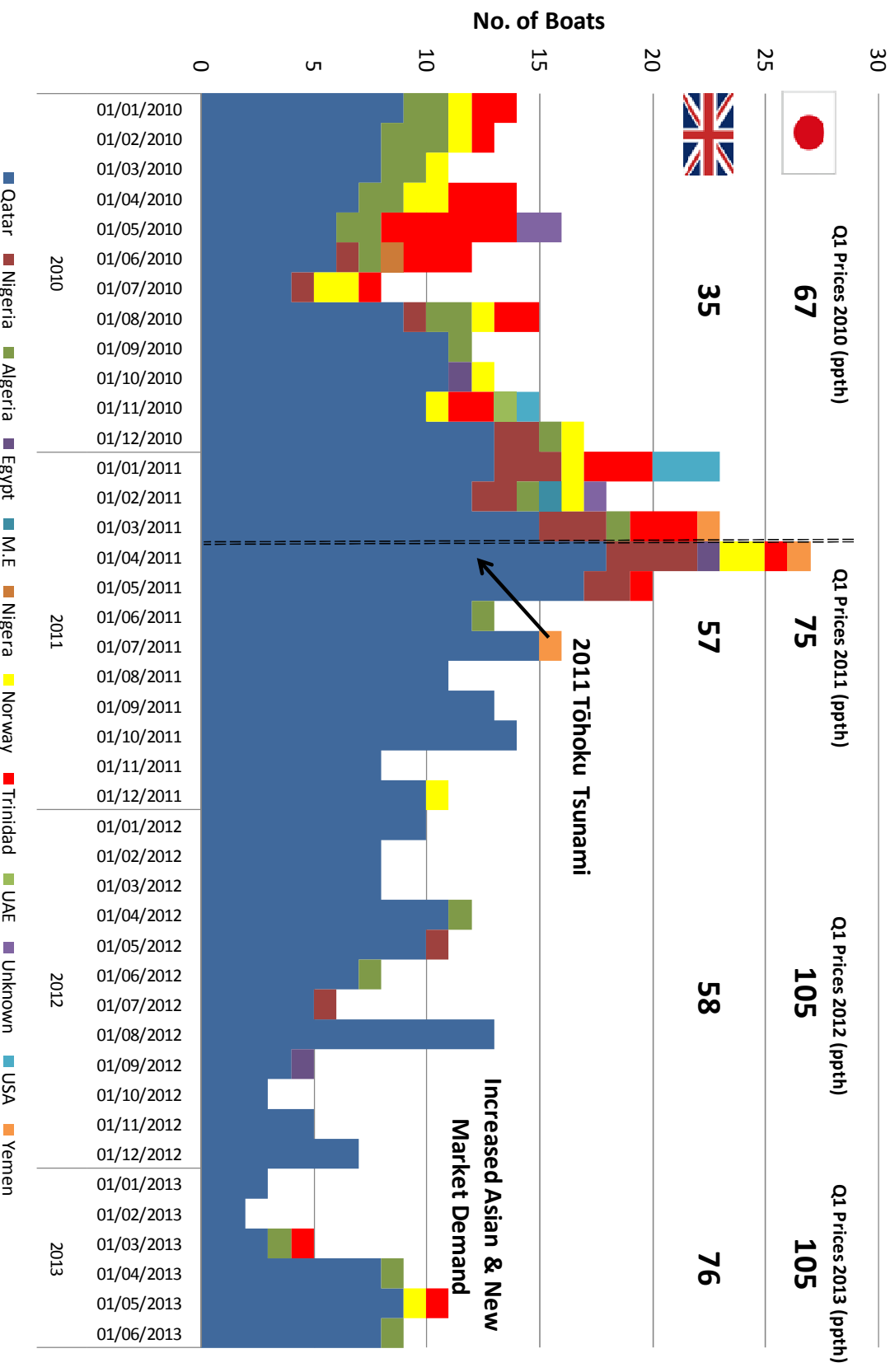
1st Jan to 30th June 2013

LNG terminal flows Jan 2013 - Jul 2013 vs Previous Year / SAP



Gas Supply Breakdown – LNG Deliveries

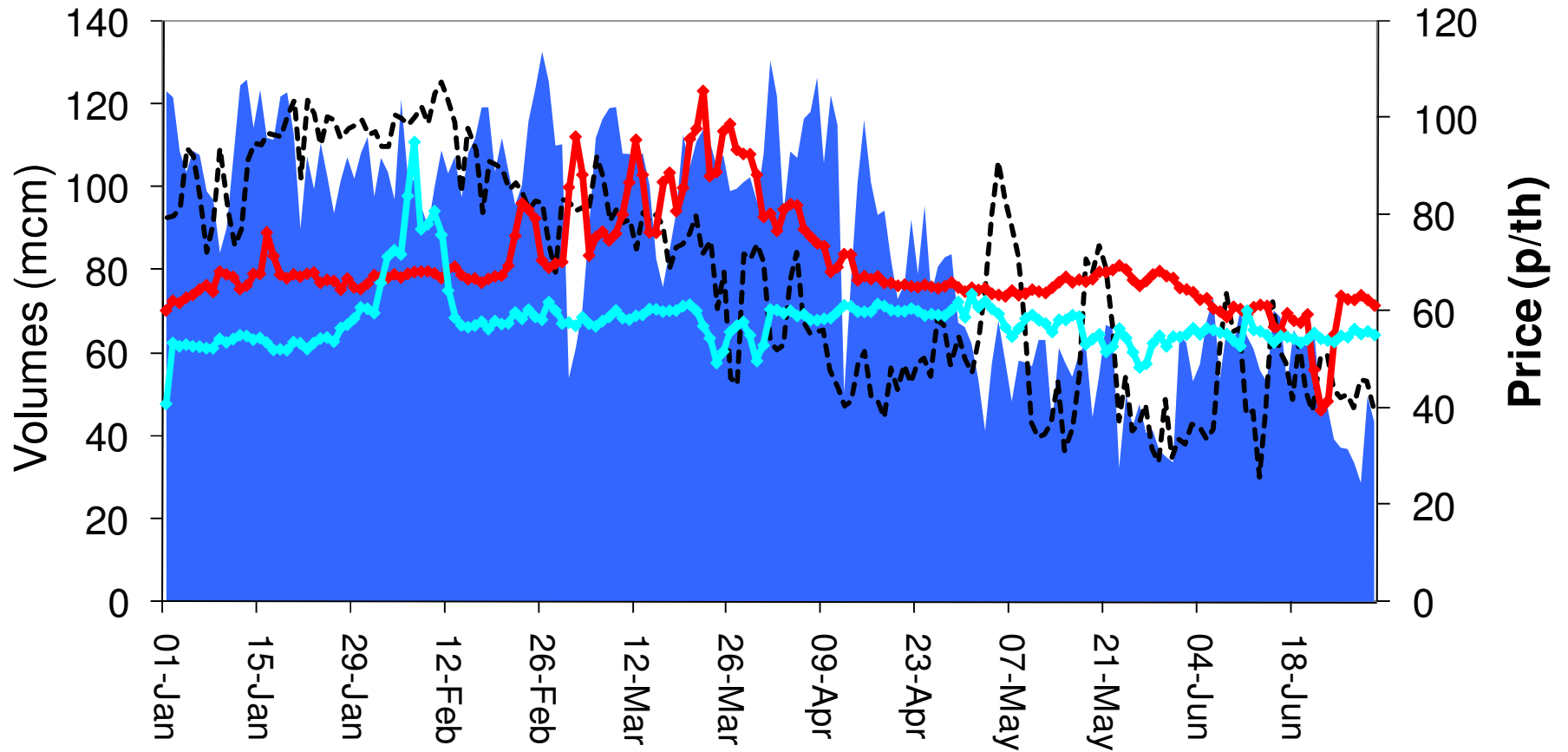
LNG Deliveries



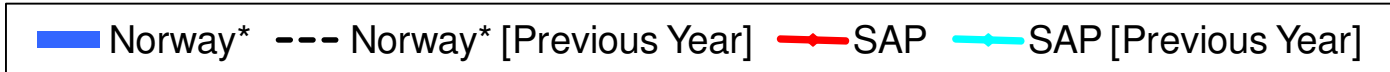
Gas Supply Breakdown – Norway

1st Jan to 30th June 2013

Norwegian* supply volumes Jan - Jun 2013 vs Previous Year / SAP

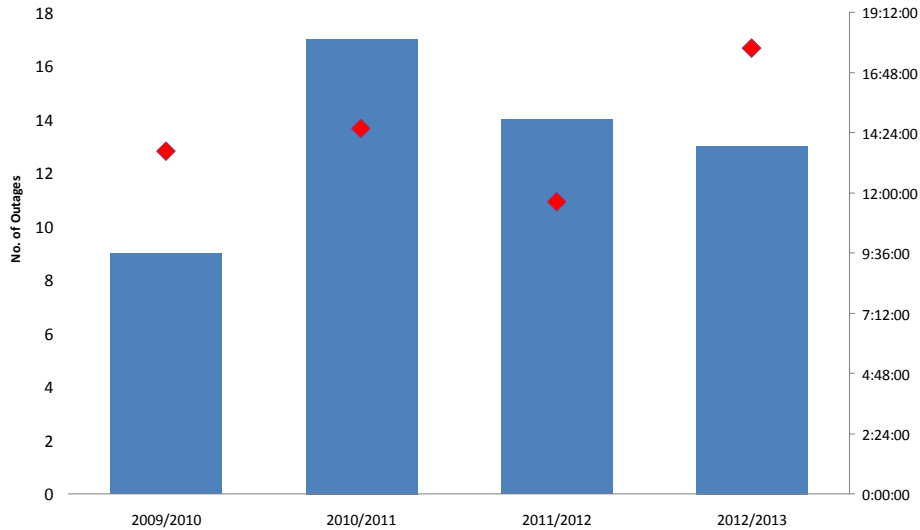


* Estimated



Unplanned Supply Reductions

Norwegian Flows - Langeled - Actual Losses & Average Duration



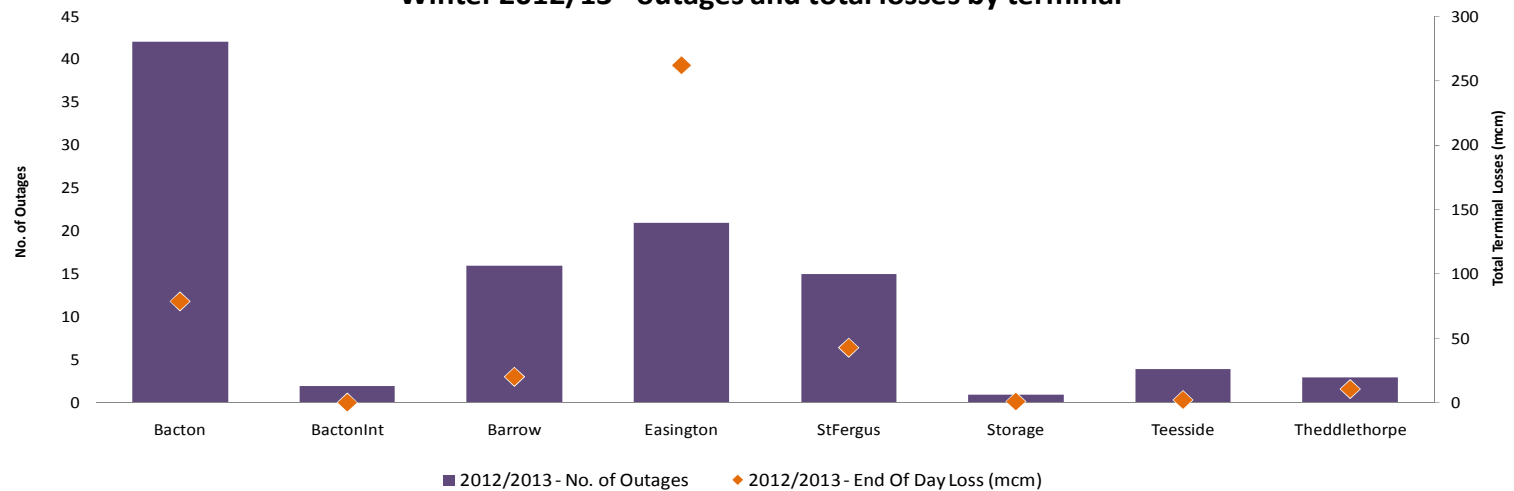
Norwegian Flows - Langeled - Actual Losses & Average Duration



■ Count of Date ◆ Average of Duration

■ Sum of Actual End Of Day Loss (mcm) ◆ Average of Duration

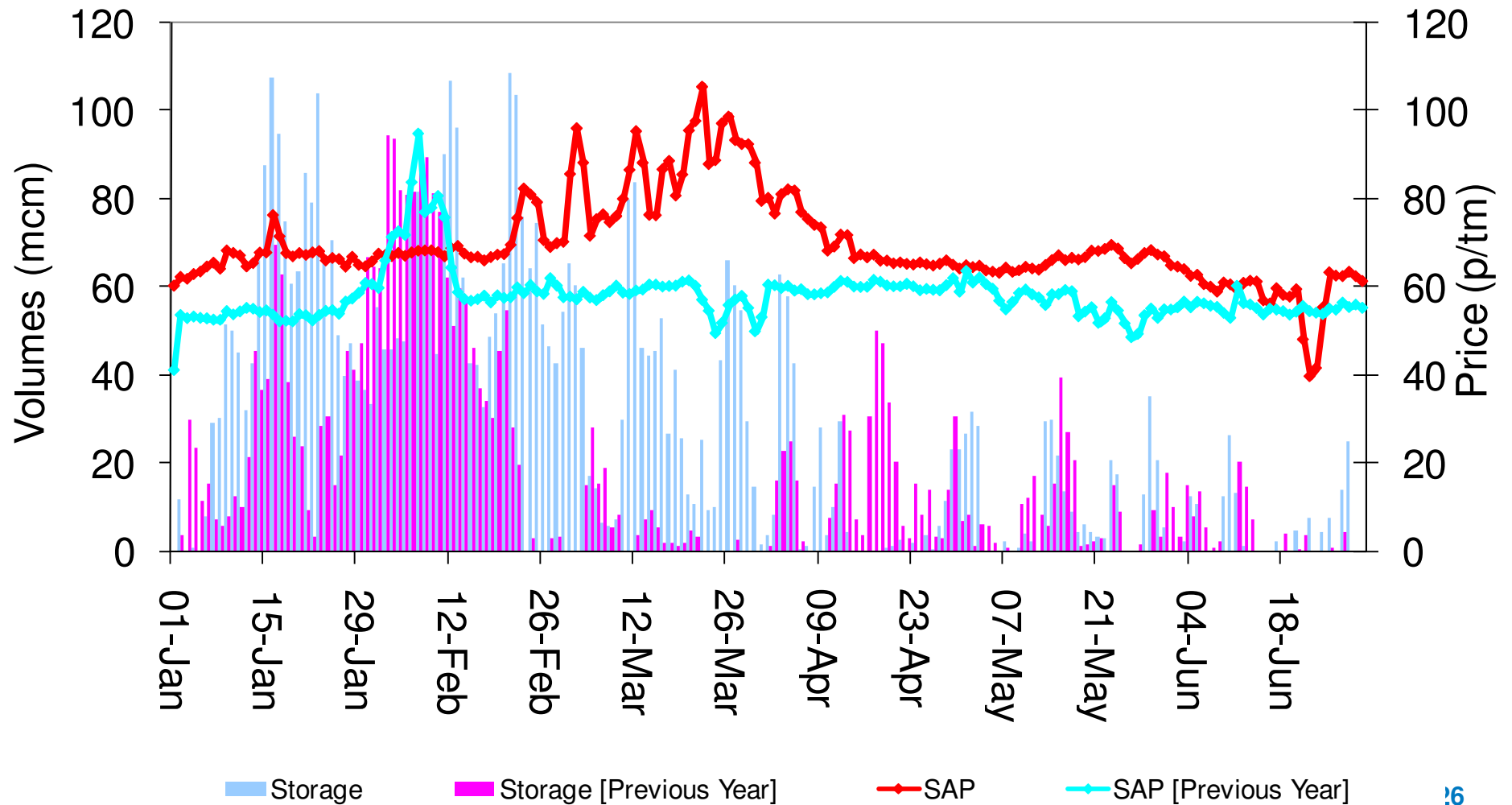
Winter 2012/13 - outages and total losses by terminal



Gas Supply Breakdown – Storage

1st Jan to 30th June 2013

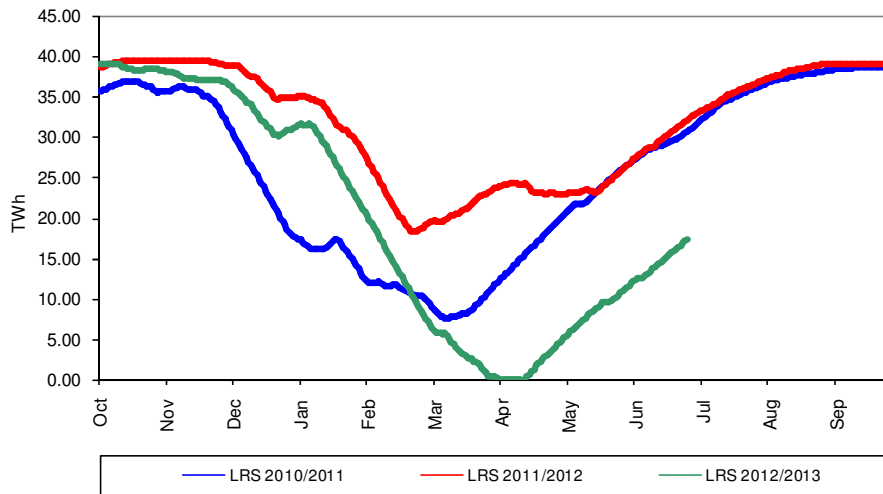
Storage flows Jan - June 2013 vs Previous Year / SAP



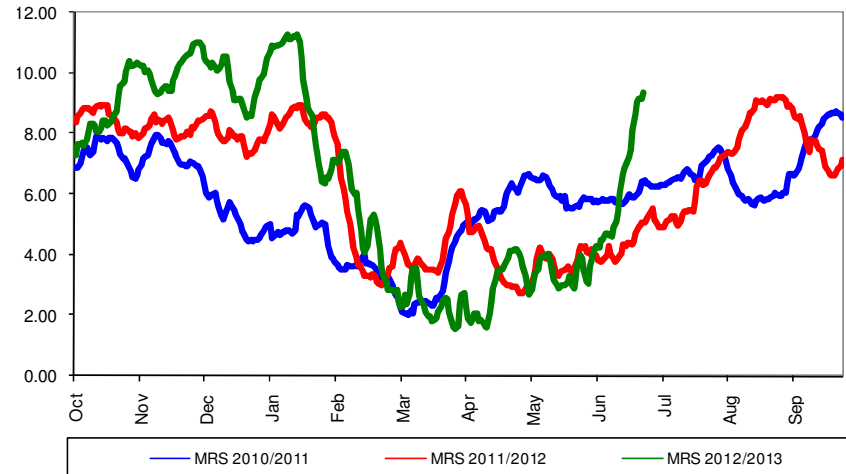
Storage Stocks - UK

1st Oct 2012 to 30th Jun 2013

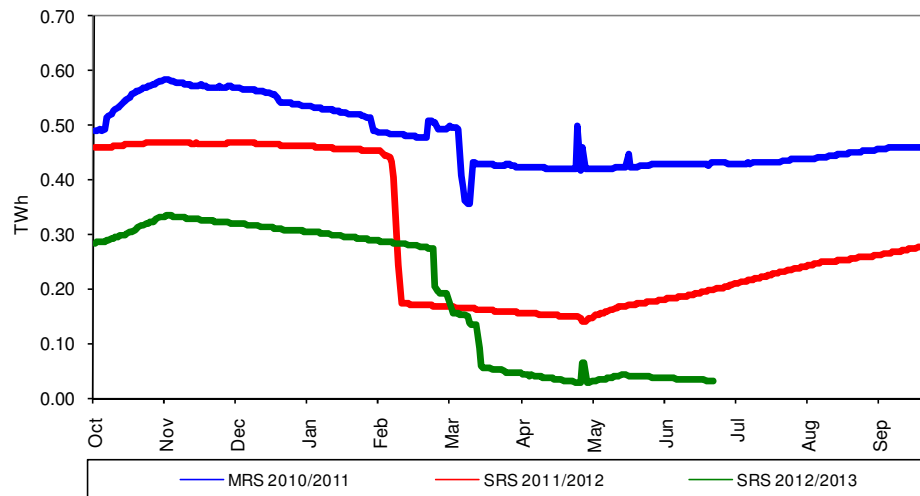
LRS Stocks



MRS Stocks

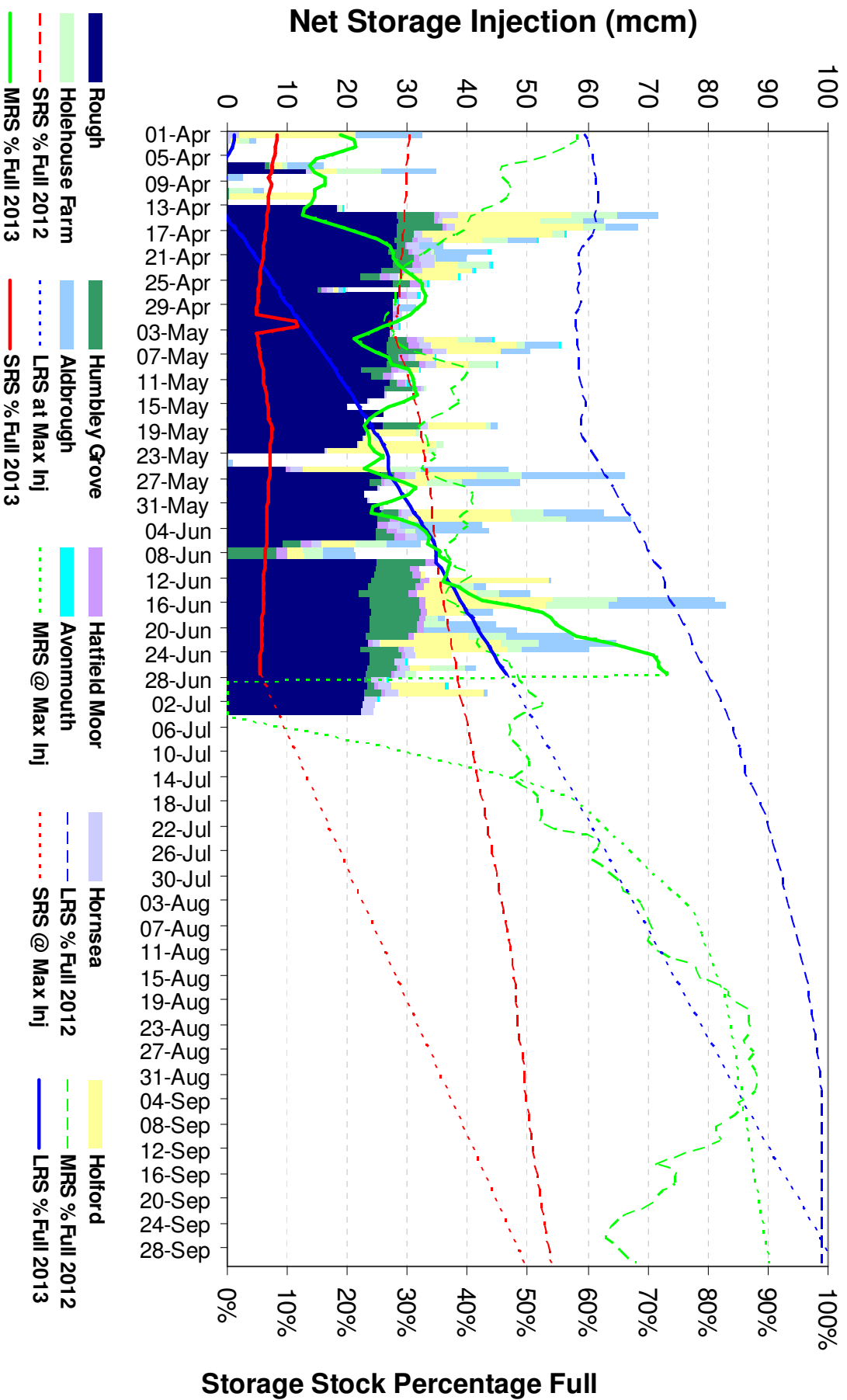


SRS Stocks



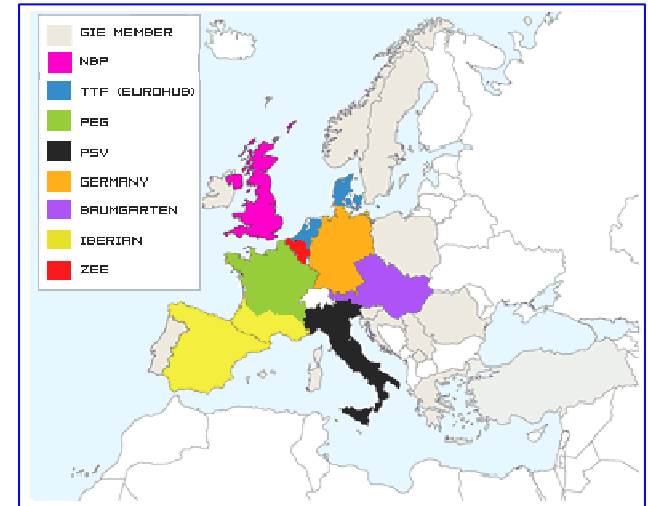
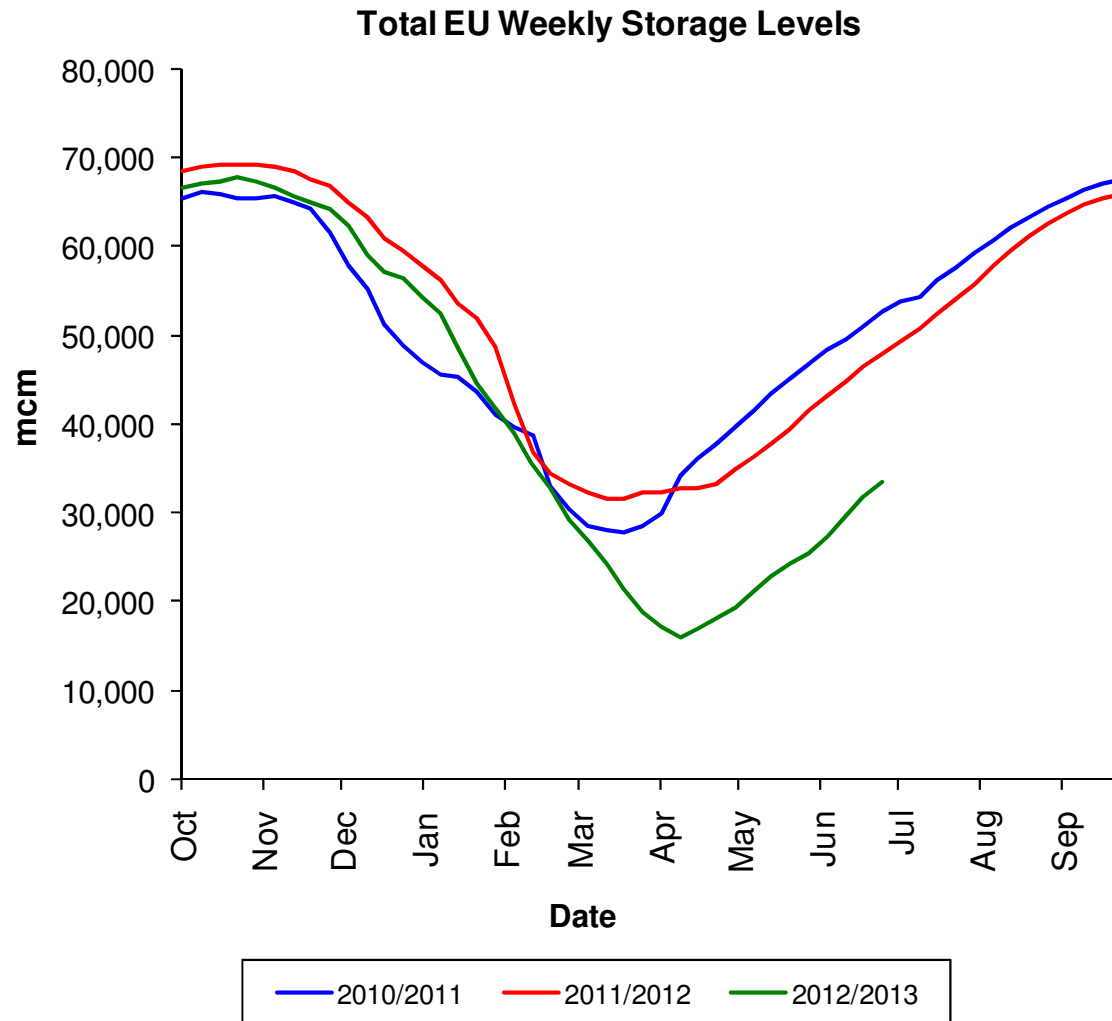
2012/13 Reflection

Storage Stocks



Storage Stocks - EU

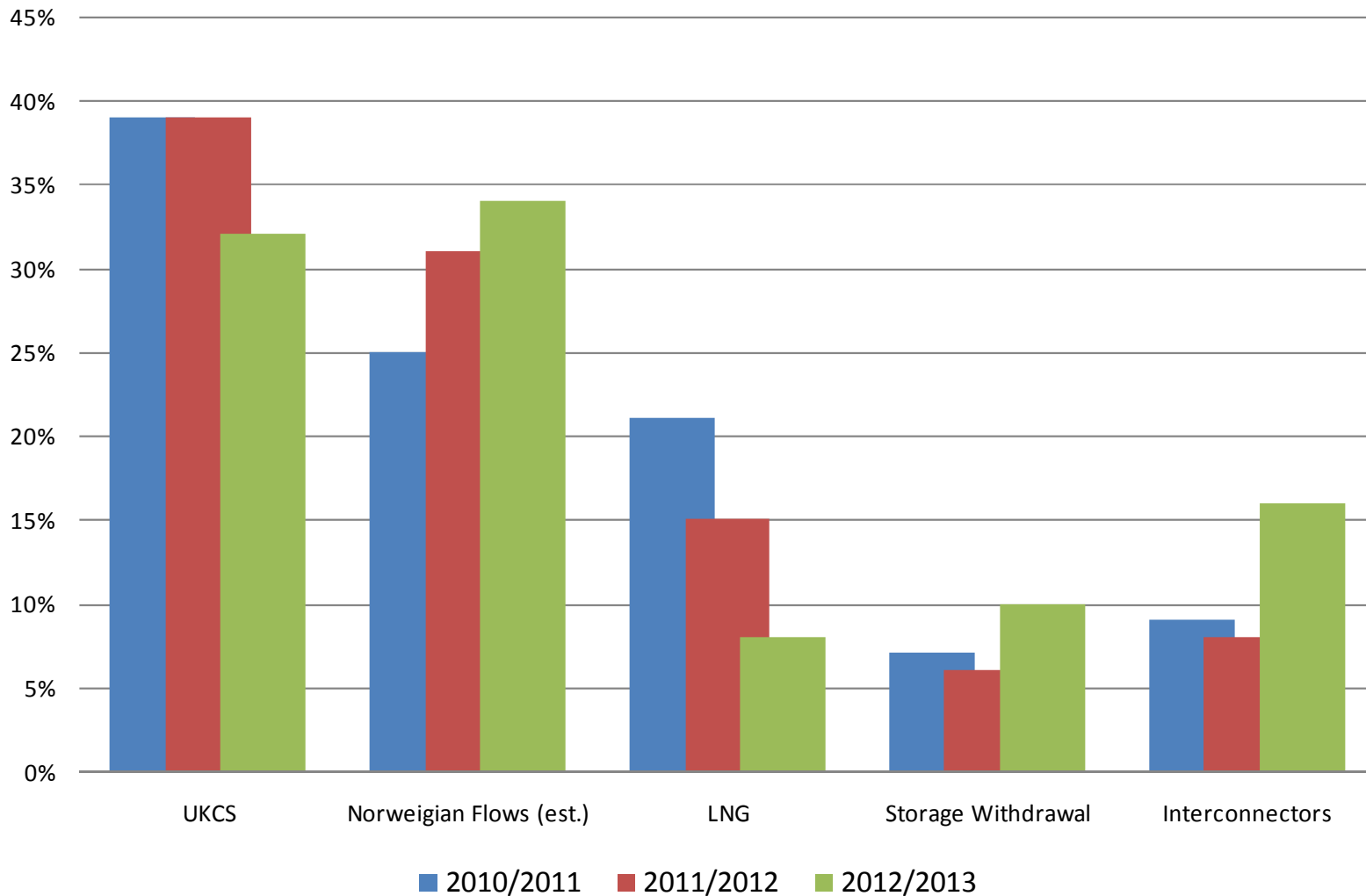
From 1st Oct 2012 to 30th Jun 2013 vs. Previous Years



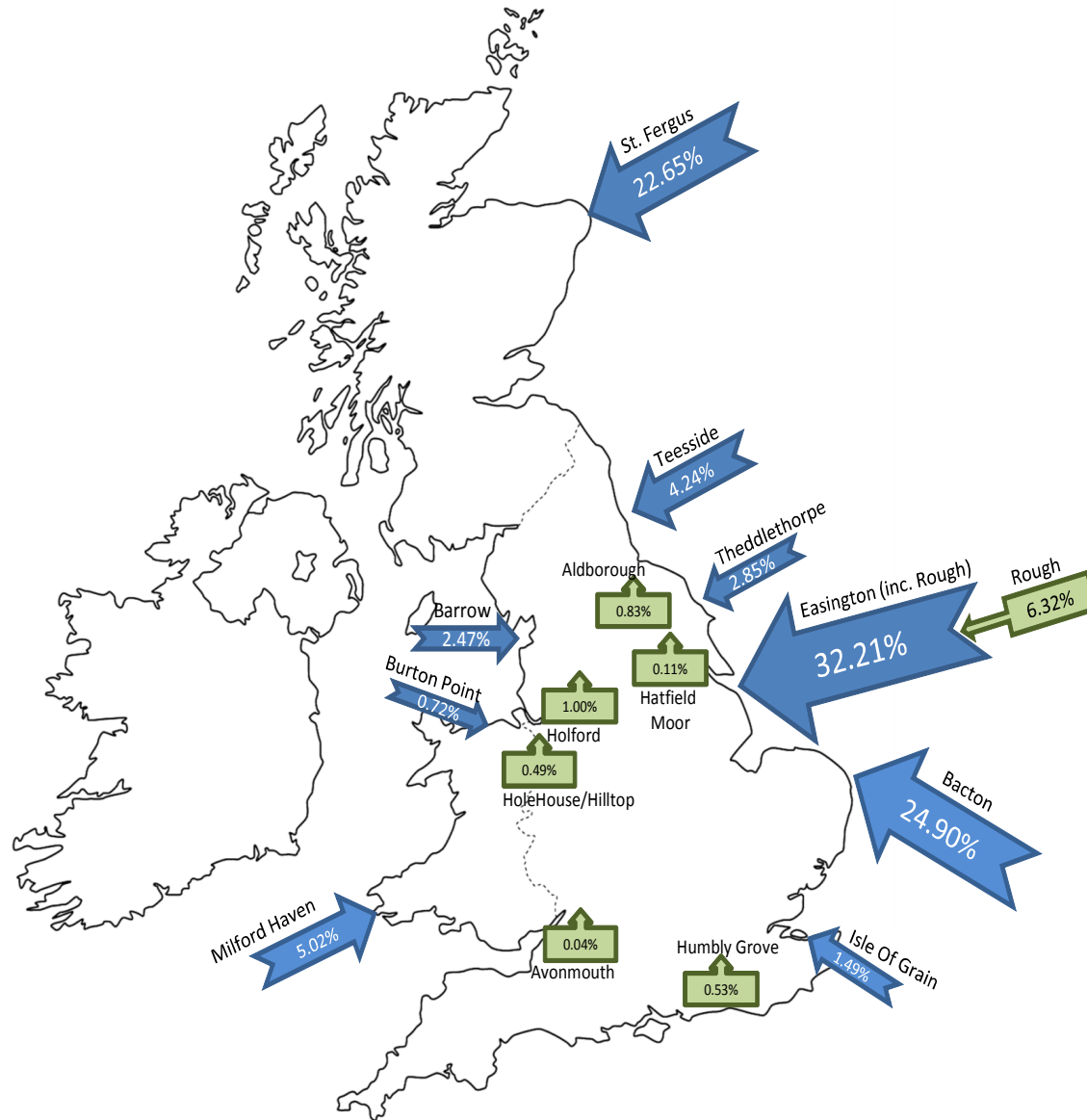
Stocklevel Status at 06:00CET on Wed 06/03/2013		
Hub Area	Stock Level (mcm)	% Full
Baumgarten	5950	35%
Germany	4558	37%
Iberian	9409	45%
NBP	2049	71%
France	2778	58%
PSV	9725	59%
SOUTH-EAST	196	36%
TTF (Eurohub)	725	35%
ZEE	342	49%
Total Hubs	35732	47%

Supply Mix

Winter Supply % - 2010 to 2013

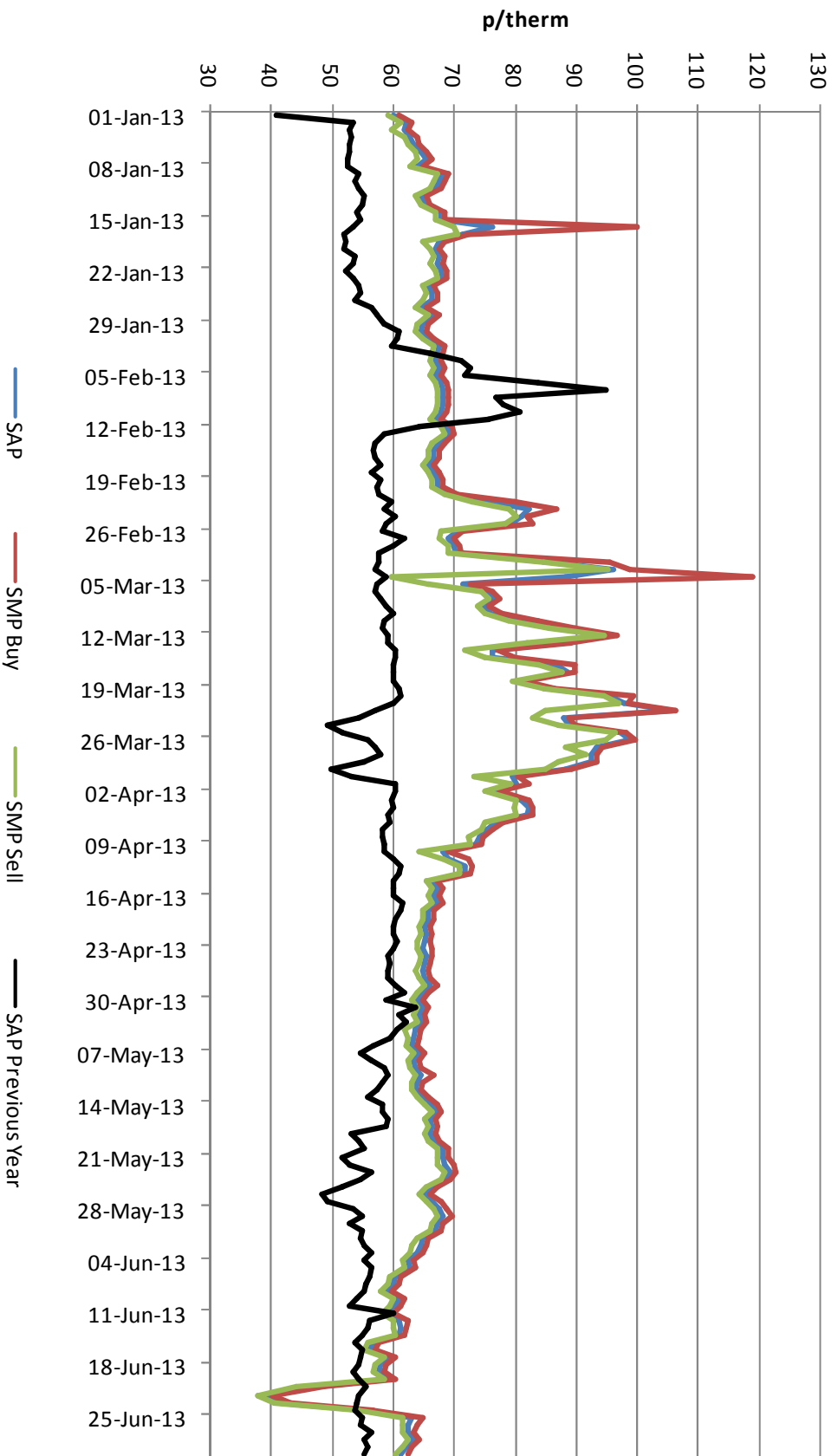


Geographic Supply Profile



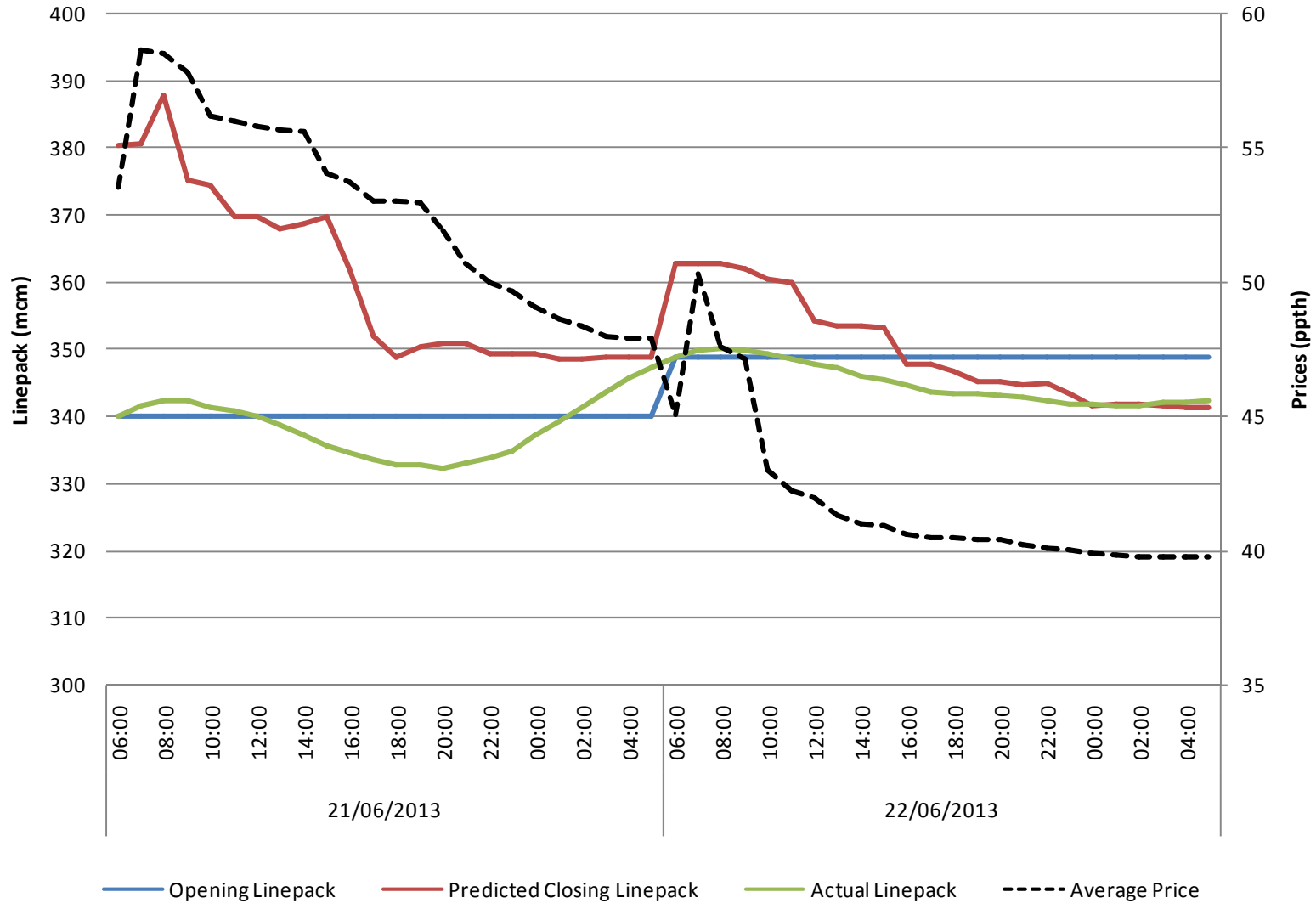
UK Gas Prices

System Prices
1st Jan 2013 to 30th June 2013 Vs Previous Years SAP



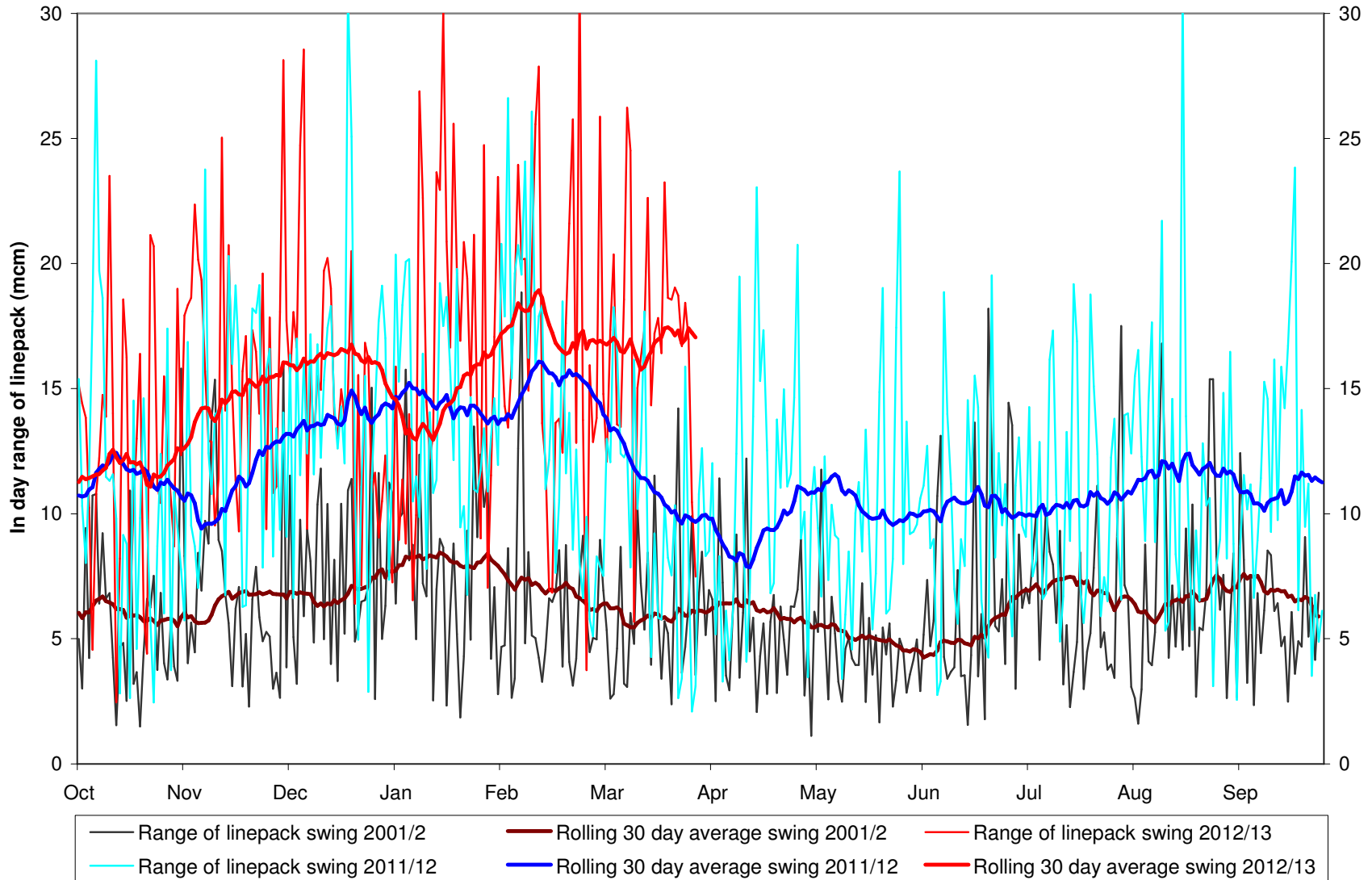
21st – 22nd June: Market Response

Linepack vs Prices -21st to 22nd June

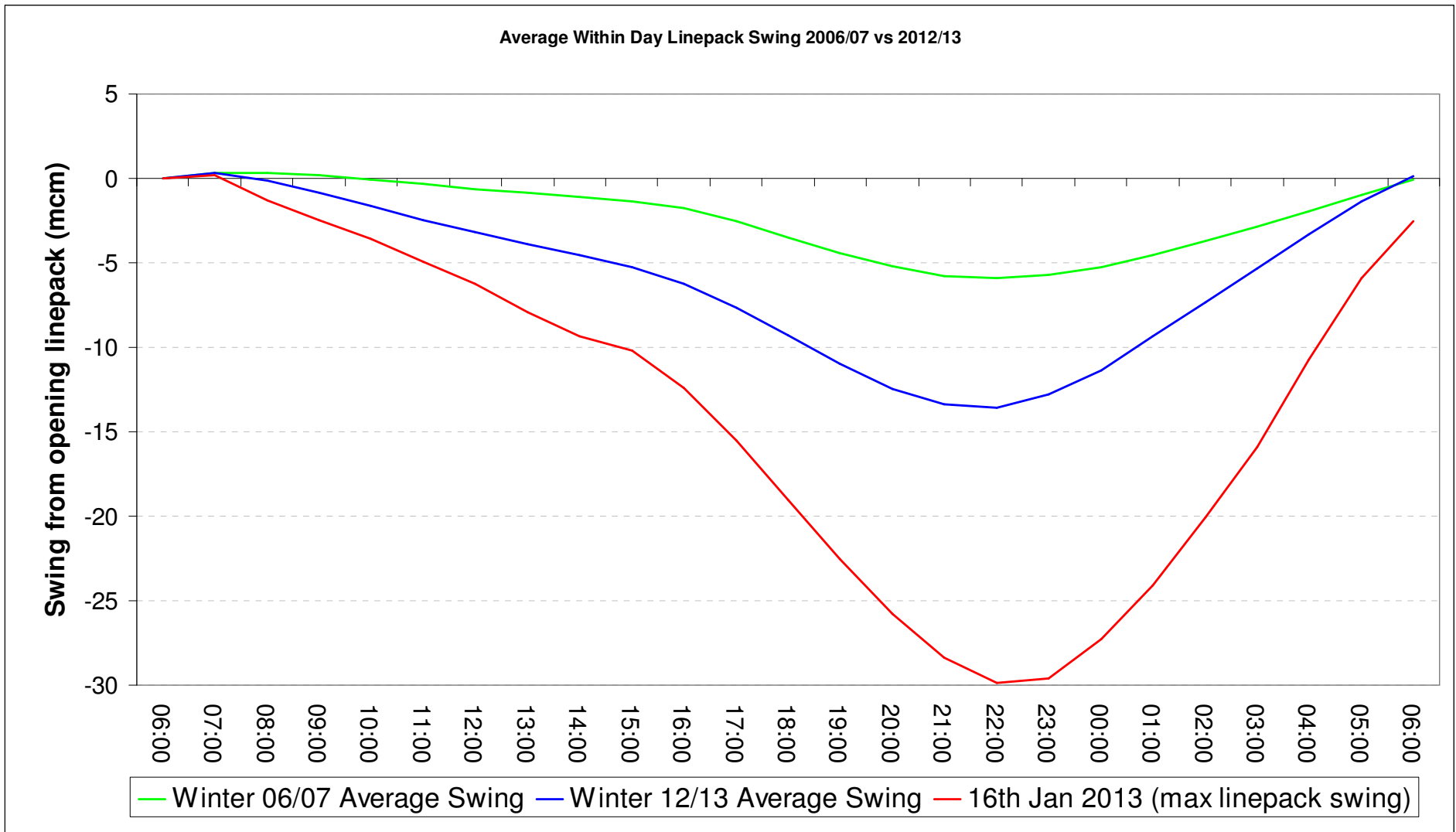


Actual Linepack 2001/02 vs. 2011/12 & 2012/13

Comparison of within day max-min range of NTS linepack (mcm)

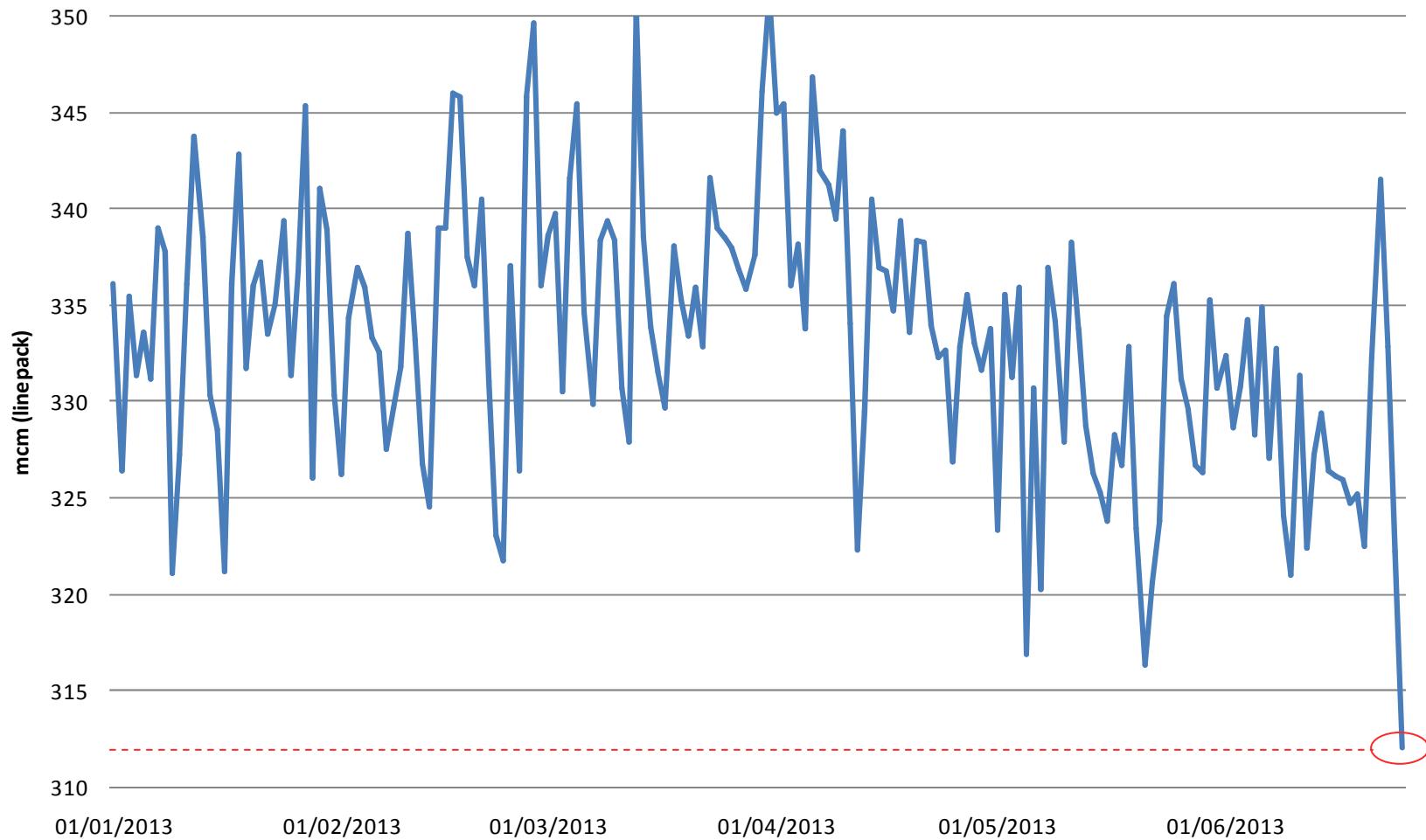


16th January: Linepack Swing



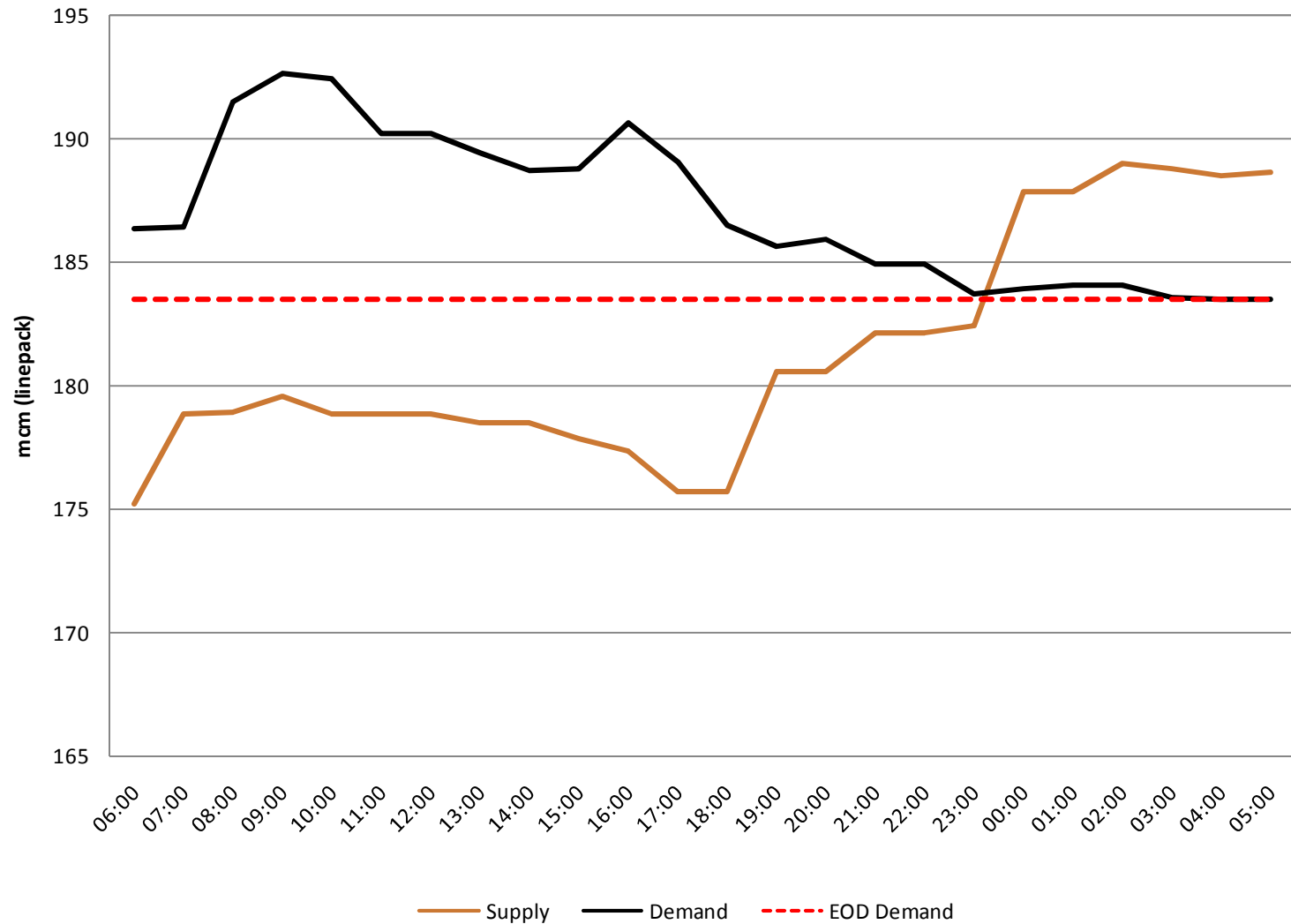
Linepack Swing – Summer: 25th June

Minimum Actual Linepack - Aug 2012 to June 2013



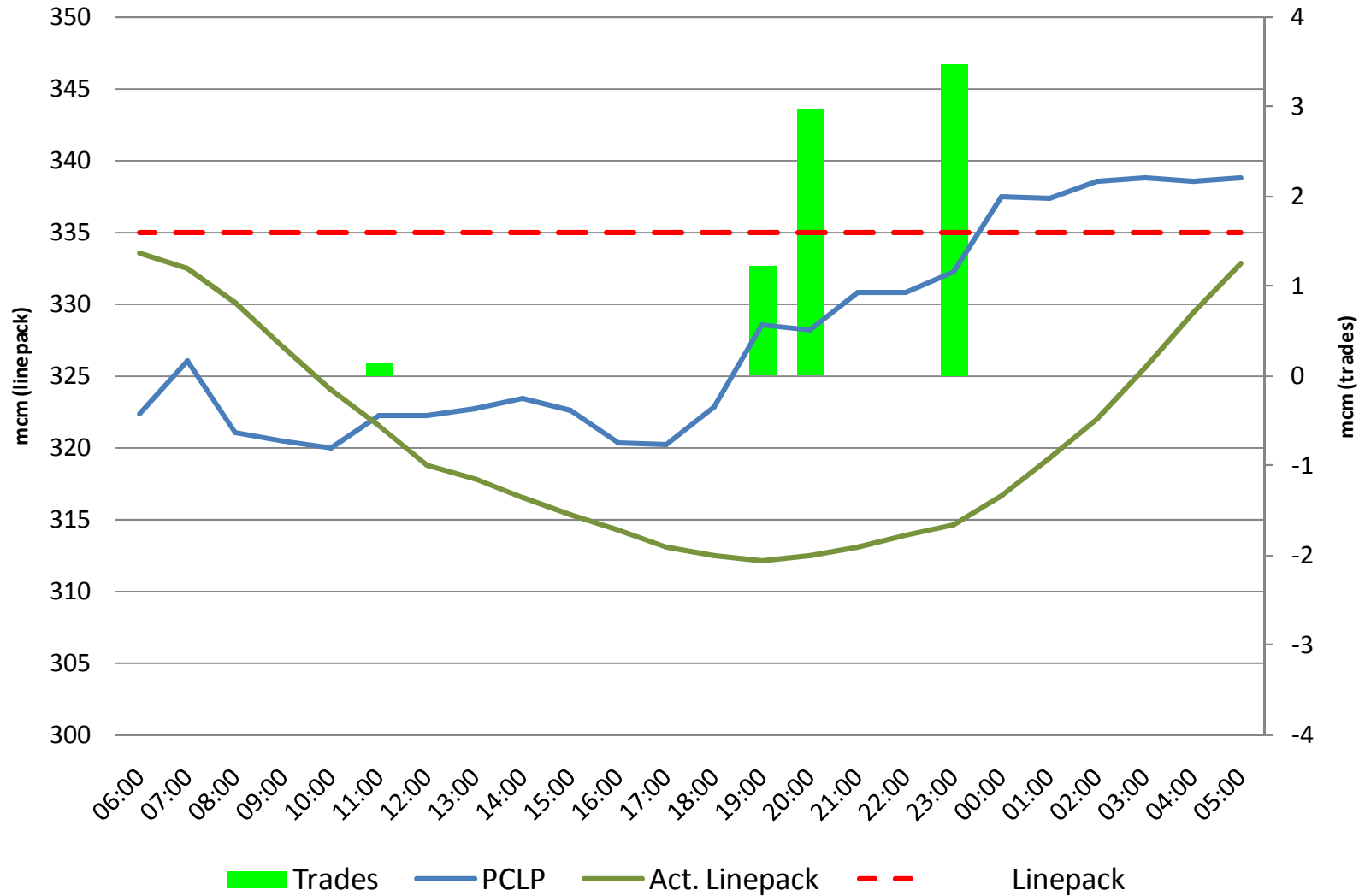
Linepack Swing – Summer: 25th June

Linepack & Trades - 25th June



Linepack Swing – Summer: 25th June

Linepack & Trades - 25th June



What Operational Issues Affected Users?

