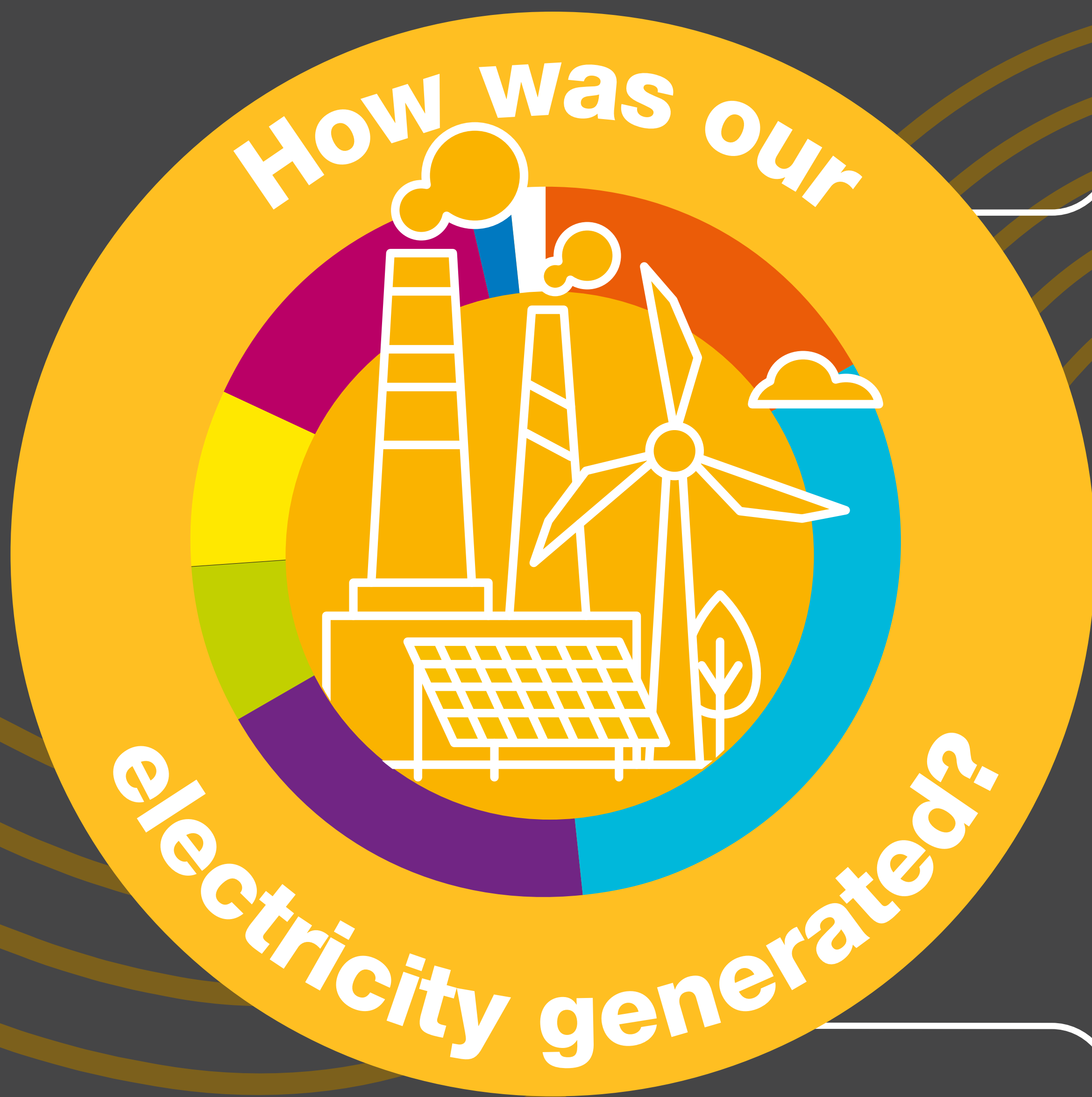


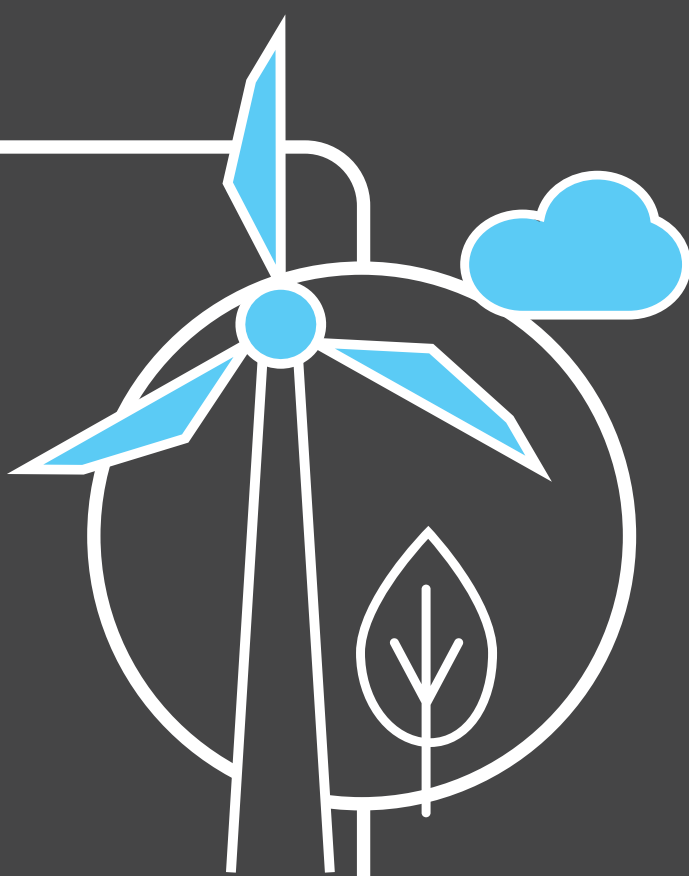
# Britain's Electricity Explained: August 2024

## ESO



Gas	16.8%
Wind	31.8%
Nuclear	18.2%
Biomass	7.1%
Coal	0.2%
Solar	8%
Imports	14.4%
Hydro	2%
Storage	1.5%

### Zero carbon



**60%** of electricity came from zero carbon sources  
**87%** peak zero carbon share

### Carbon intensity



**83** gCO<sub>2</sub>/kWh average



Greenest time of the month  
 11am on 23 August

### Coal



**0.2%** use this month

This time **5 years ago** coal usage was **1%**

**288** consecutive coal free hours

### Imports & exports

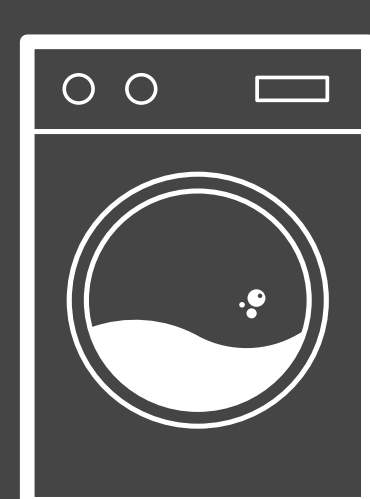


Energy in  
**3210**  
**GWh**



Energy out  
**1258**  
**GWh**

### Demand



**21TWh** run through network (that's 21 billion washing machine cycles).  
 Peak demand time was 6pm on 28 August.

### View in real-time



To view our data in real-time, please download the ESO app for Apple or Android.  
 Or visit [carbonintensity.org.uk](https://carbonintensity.org.uk)