

**National Electricity
Transmission System Status Report**

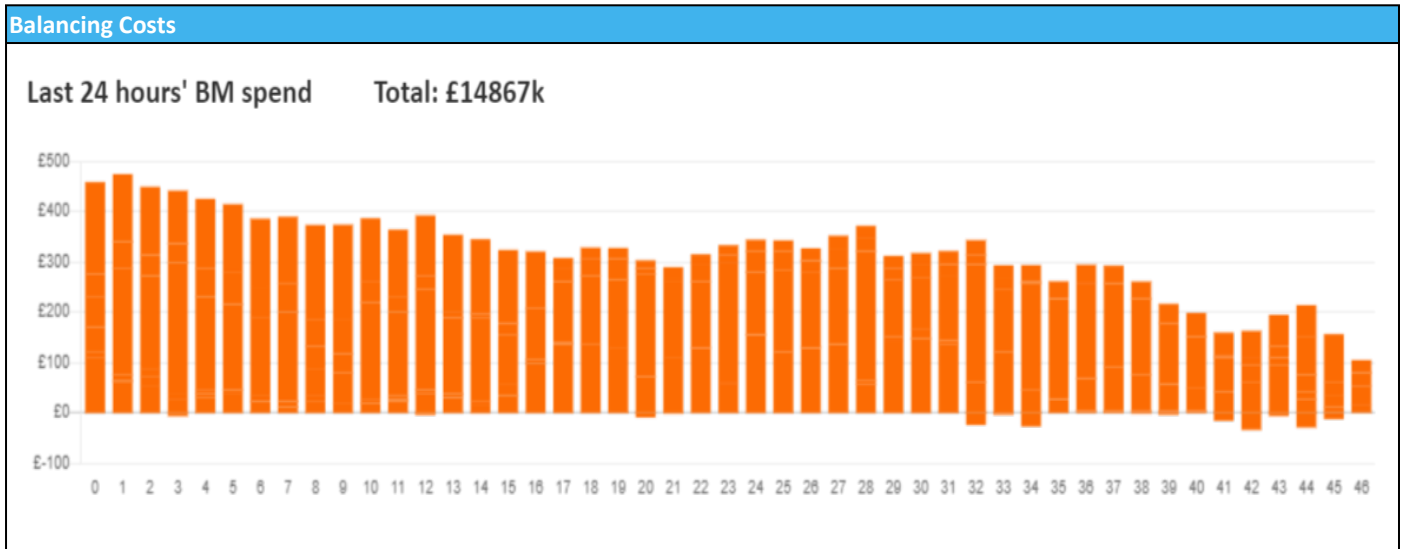


national**grid**ESO

National Electricity Transmission System Status Report
Friday 23 August 2024

Today's High Level Risk Status Forecast for the next 24h			
General Status		Voltage	
Demand		System Inertia	
System Margins		Weather	
Generation		Transmission	
Active Constraints			
System Warning			

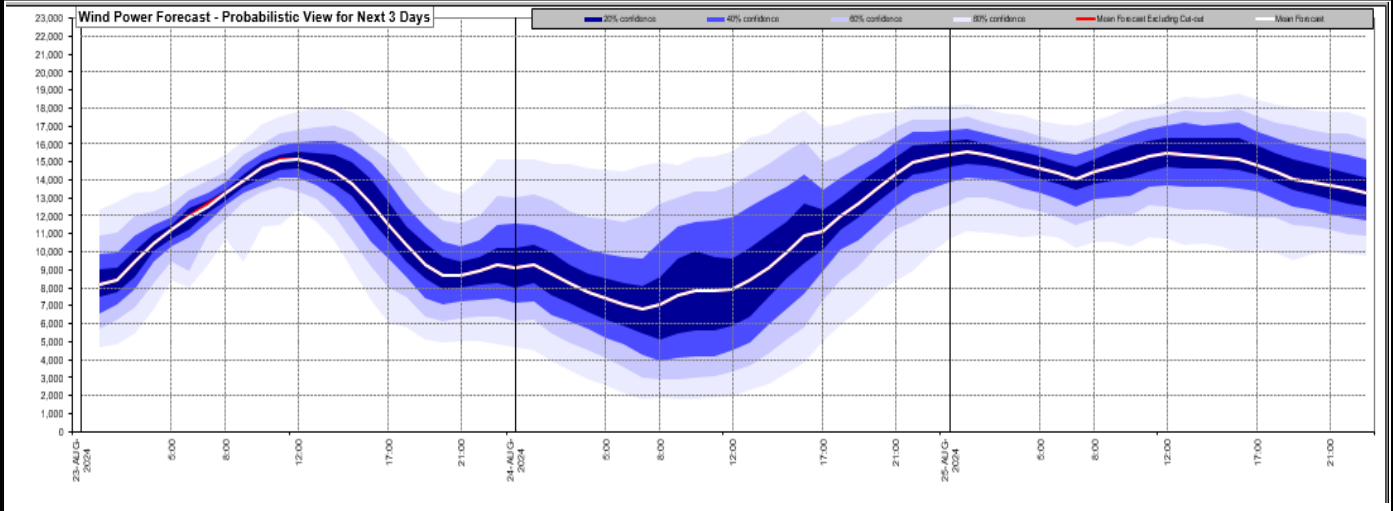
Today's Minimum De-Rated Margin	10,830 (SP 43)	
Current BMU Largest Loss Risk	Generation	1500MW
	Demand	1050MW



Yesterday's Market Summary	
Cash Out Price (Max)	111.90 £/MWh (SP 38,39,40,41)
Cash Out Price (Min)	-71.32 £/MWh (SP 10,11)
Peak Demand Yesterday	27,351 MW
Minimum Demand	16,970 MW

Interconnector Net Transfer Capacity (MWs)			
Today	Import	Export	Remarks
Netherlands (BritNed)	1000	1000	Fully Available
France (IFA)	2000	2000	Fully Available
Belgium (Nemo)	1000	1000	Fully Available
Ireland (EWIC)	500	500	Fully Available
France (ElecLink)	1000	1000	Fully Available
Northern Ireland (MOYLE)	500	500	Fully Available
Norway (NSL)	1400	1400	Fully Available
France (IFA2)	0	0	Unavailable
Viking Link	1400	1400	Fully Available
Ireland (GreenLink)	0	0	Not yet commissioned

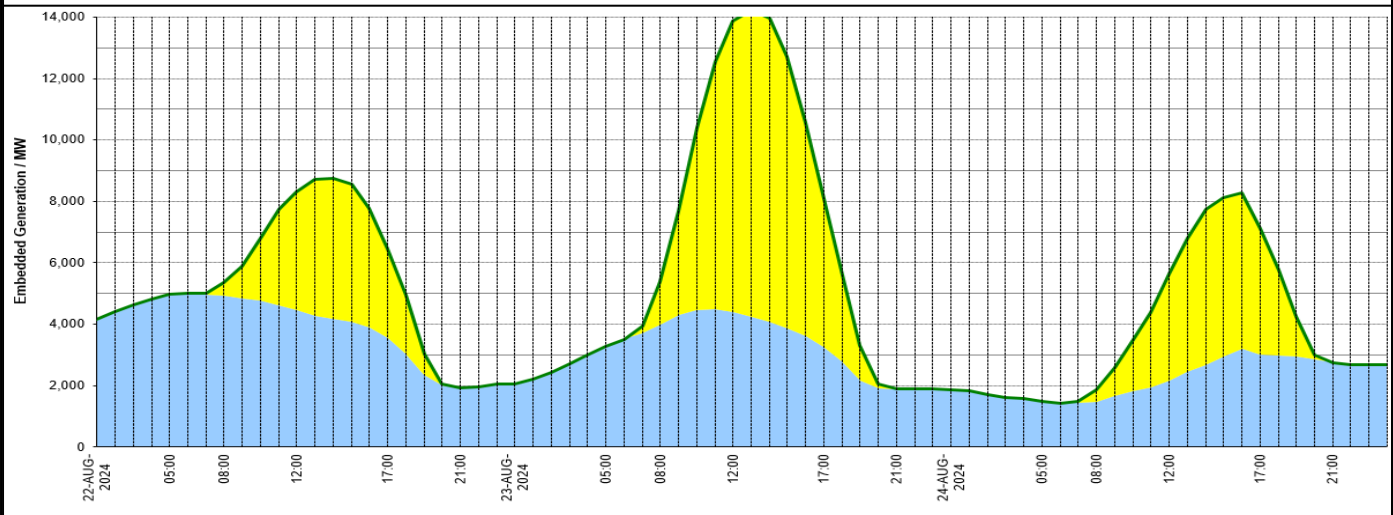
Wind Power Forecast



Expected embedded generation (MWs)

Embedded Generation Forecast

Embedded Generation Estimates													Last run: 23-Aug-2024 04:32:56				
	22-AUG-2024					23-AUG-2024					24-AUG-2024						
	05:00	08:00	12:00	17:00	21:00	00:00	05:00	08:00	12:00	17:00	21:00	00:00	05:00	08:00	12:00	17:00	21:00
Solar (MW)	0	431	3852	2913	0	0	0	1410	9474	4835	0	0	0	393	3491	4110	0
Wind (MW)	4984	4917	4448	3538	1919	2061	3275	3983	4390	3251	1894	1854	1477	1468	2157	3001	2761
STOR (MW)	0	0	0	0	0	0	0	0	0	0	0	0	0	0	0	0	0
Total (MW)	4984	5348	8300	6451	1919	2061	3275	5393	13864	8086	1894	1854	1477	1861	5648	7111	2761



Weather	Source	Commentary
Latest forecast (Summary)	Met Office SEPA Natural Resources Wales	<p>Today: Storm Lilian brings heavy rain and strong winds during the early morning but clears northeastwards quickly. Blustery showers and sunny spells follow. Largely dry across Wales and southern England, until the evening. Windy here to start, but slowly easing.</p> <p>Tonight: Blustery showers continuing in the north, some being heavy in the northwest. Drier across the south, before an area of rain pushes into southern parts during the early hours.</p>
General Weather Concerns e.g. wind, rain, snow, flooding, GB Weather Warnings	Met Office Weather Warnings SEPA Natural Resources Wales	<p>UK Weather Warnings Yellow warning of rain Areas affected: Central, Tayside & Fife Grampian SW Scotland, Lothian Borders ACTIVE Started at: 21:00 BST on Thu 22 August Ends: 09:00 BST on Fri 23 August A period of heavy rain could lead to impacts from flooding.</p> <p>Yellow warning of wind Areas affected: East Midlands North East England North West England SW Scotland, Lothian Borders Wales Yorkshire & Humber</p>

Weather	Source	Commentary
		Starts: 05:00 BST on Fri 23 August Ends: 11:00 BST on Fri 23 August Storm Lilian will bring strong winds, which may lead to disruption to travel and infrastructure on Friday morning.
		Flood Warnings 23 flood warnings and 64 flood alerts issued for England.
		18 flood warnings and 14 flood alerts issued for Scotland. 0 flood warnings and 12 flood alerts issued for Wales

Contains public sector information licensed under the Open Government Licence v1.0

Further Information	
BM Reports	https://www.bmreports.com
System Balancing Reports	https://www.nationalgrideso.com/industry-information/industry-data-and-reports/system-balancing-reports
Forecast Volumes and Costs	https://www.nationalgrideso.com/industry-information/industry-data-and-reports/forecast-volumes-and-costs