

# National Electricity Transmission System Status Report

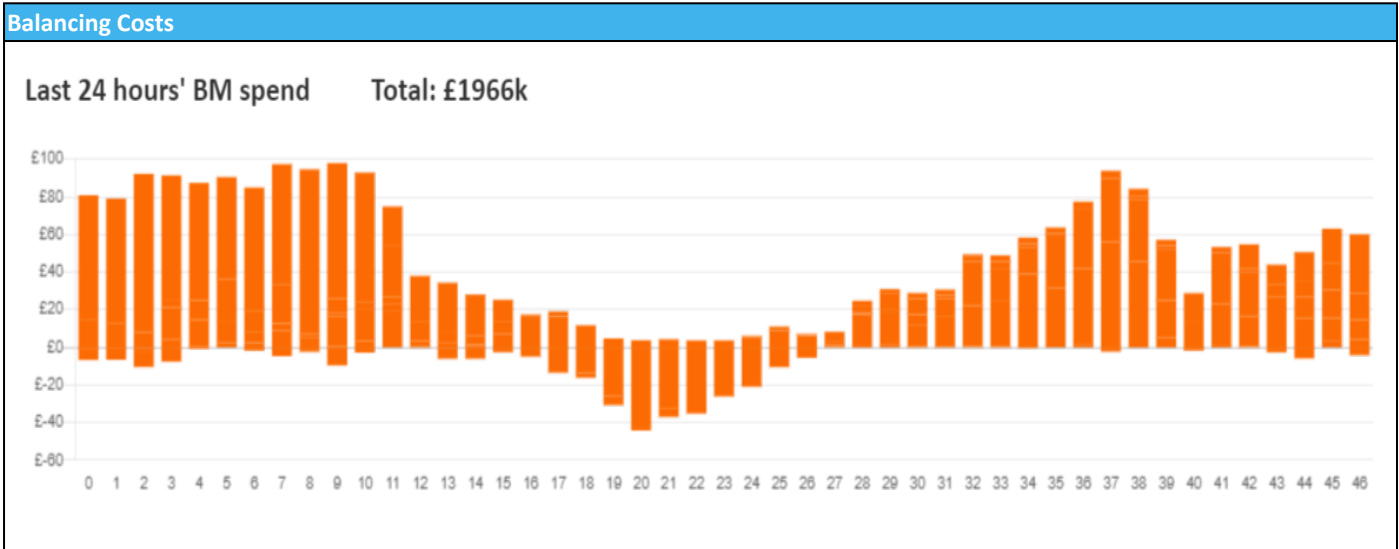


nationalgridESO

National Electricity Transmission System Status Report  
Wednesday 03 April 2024

Today's High Level Risk Status Forecast for the next 24h			
General Status		Voltage	
Demand		System Inertia	
System Margins		Weather	
Generation		Transmission	
Active Constraints			
<a href="#">System Warning</a>			

<a href="#">Today's Minimum De-Rated Margin</a>	15,562.71 (SP 41)	
Current BMU Largest Loss Risk	Generation	1500 MW
	Demand	850 MW



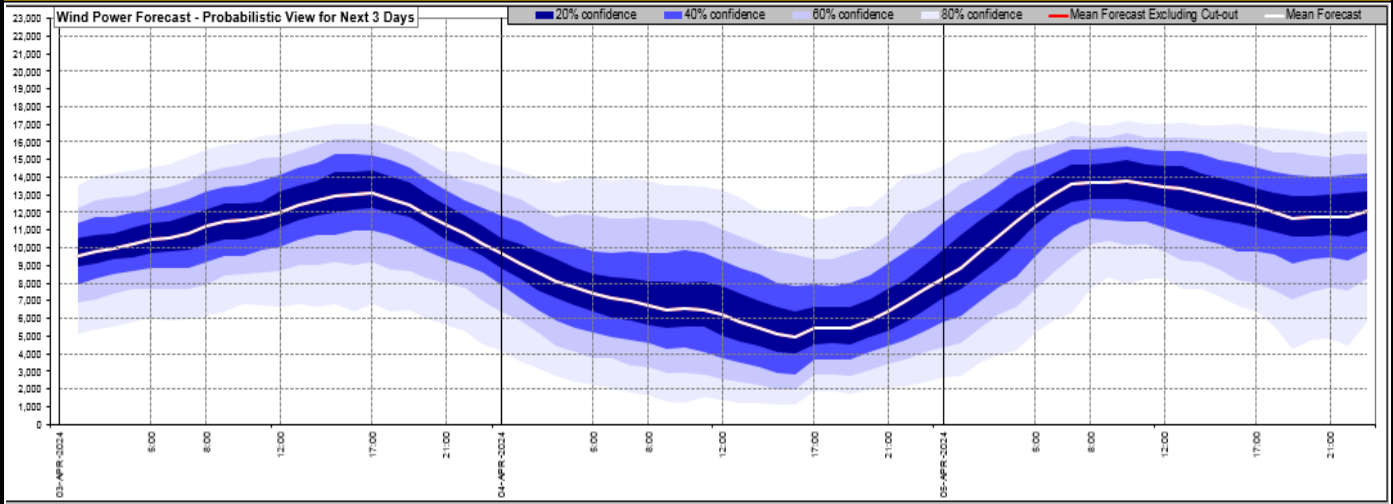
**Yesterday's Market Summary**

<a href="#">Cash Out Price (Max)</a>	£ 104 (SP 39)
<a href="#">Cash Out Price (Min)</a>	£ 0 (SP 10)
<a href="#">Peak Demand Yesterday</a>	35,721 MW
Minimum Demand	20,660 MW

**Interconnector Net Transfer Capacity (MWs)**

Today	Import	Export	Remarks
Netherlands (BritNed)	1000	1000	Fully Available
France (IFA)	1500	1500	Partially Available
Belgium (Nemo)	1000	1000	Fully Available
Ireland (EWIC)	500	500	Fully Available
France (ElecLink)	1000	1000	Fully Available
Northern Ireland (MOYLE)	500	500	Fully Available
Norway (NSL)	1400	1400	Fully Available
France (IFA2)	1014	1014	Fully Available
Viking Link	1430	1430	Fully Available
Ireland (GreenLink)	0	0	Not yet commissioned

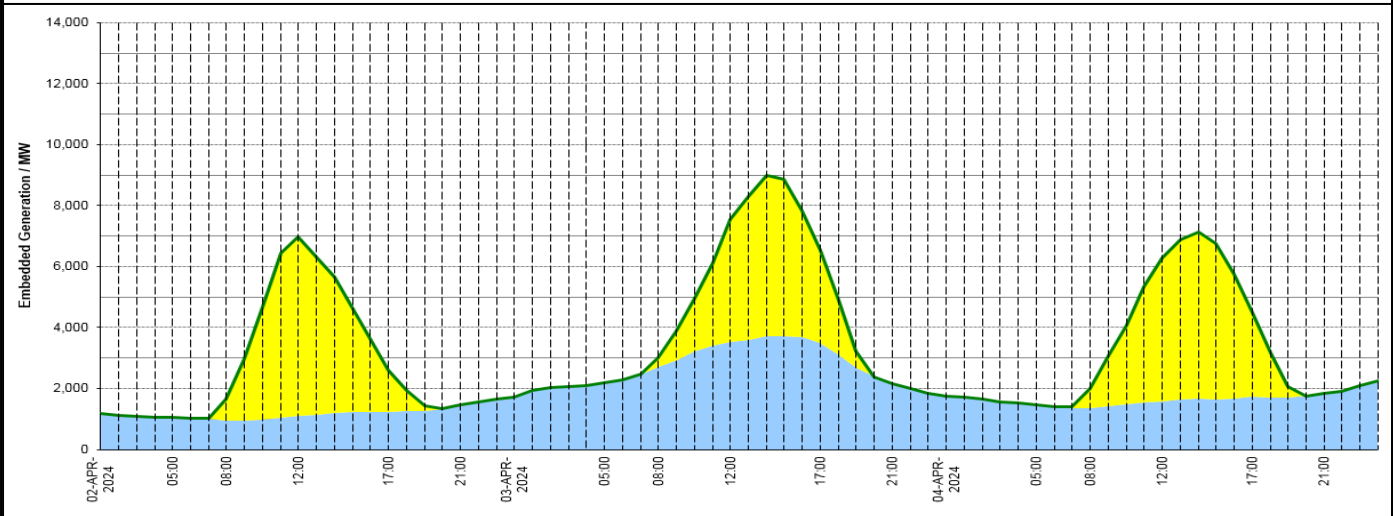
### Wind Power Forecast



### Expected embedded generation (MWs)

#### Embedded Generation Forecast

Embedded Generation Estimates																Last run: 03-Apr-2024 04:32:55	
	02-APR-2024					03-APR-2024					04-APR-2024						
	05:00	08:00	12:00	17:00	21:00	00:00	05:00	08:00	12:00	17:00	21:00	00:00	05:00	08:00	12:00	17:00	21:00
Solar (MW)	0	686	5867	1373	0	0	0	307	3998	3011	0	0	0	654	4684	2743	0
Wind (MW)	1044	956	1108	1229	1450	1725	2199	2703	3532	3508	2165	1748	1473	1352	1591	1747	1836
STOR (MW)	0	0	0	0	0	0	0	0	0	0	0	0	0	0	0	0	0
<b>Total (MW)</b>	<b>1044</b>	<b>1642</b>	<b>6975</b>	<b>2602</b>	<b>1450</b>	<b>1725</b>	<b>2199</b>	<b>3010</b>	<b>7530</b>	<b>6519</b>	<b>2165</b>	<b>1748</b>	<b>1473</b>	<b>2006</b>	<b>6275</b>	<b>4490</b>	<b>1836</b>



Weather	Source	Commentary
Latest forecast (Summary)	<a href="#">Met Office</a> <a href="#">SEPA</a> <a href="#">Natural Resources Wales</a>	<p><b>Today:</b> Heavy rain will persist across southern Scotland, Northern Ireland and northern England. Largely cloudy skies further south with showers. Showers may be heavy and thundery in eastern and northern England. Showers lighter for southern counties with brighter spells at times</p> <p><b>Tonight:</b> Rain continues to affect Scotland but easing slowly. Bands of rain run across Wales and England, turning thundery in the southwest during the early hours. Cold in the north.</p>
General Weather Concerns e.g. wind, rain, snow, flooding, GB Weather Warnings	<a href="#">Met Office</a> <a href="#">Weather Warnings</a> <a href="#">SEPA</a> <a href="#">Natural Resources Wales</a>	<p><b>UK Weather Warnings</b> No weather warnings are in force for the UK</p> <p><b>Flood Warnings</b> 2 flood warnings and 95 flood alerts issued for England. 0 flood warnings and 0 flood alerts issued for Scotland. 0 flood warnings and 0 flood alerts issued for Wales</p>

Further Information	
BM Reports	<a href="https://www.bmreports.com">https://www.bmreports.com</a>
System Balancing Reports	<a href="https://www.nationalgrideso.com/industry-information/industry-data-and-reports/system-balancing-reports">https://www.nationalgrideso.com/industry-information/industry-data-and-reports/system-balancing-reports</a>
Forecast Volumes and Costs	<a href="https://www.nationalgrideso.com/industry-information/industry-data-and-reports/forecast-volumes-and-costs">https://www.nationalgrideso.com/industry-information/industry-data-and-reports/forecast-volumes-and-costs</a>