

# National Electricity Transmission System Status Report

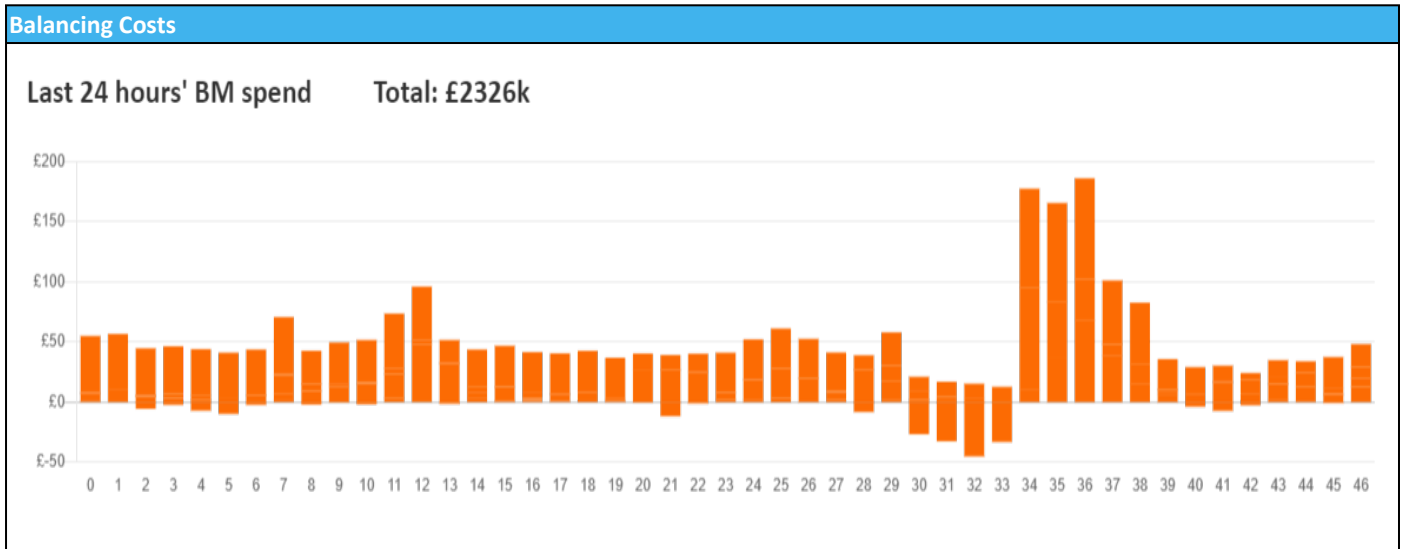


nationalgridESO

National Electricity Transmission System Status Report  
Thursday 21 March 2024

Today's High Level Risk Status Forecast for the next 24h			
General Status		Voltage	
Demand		System Inertia	
System Margins		Weather	
Generation		Transmission	
Active Constraints			
<a href="#">System Warning</a>			

<a href="#">Today's Minimum De-Rated Margin</a>	13,963 (SP 16)	
Current BMU Largest Loss Risk	Generation	1500 MW
	Demand	1050 MW



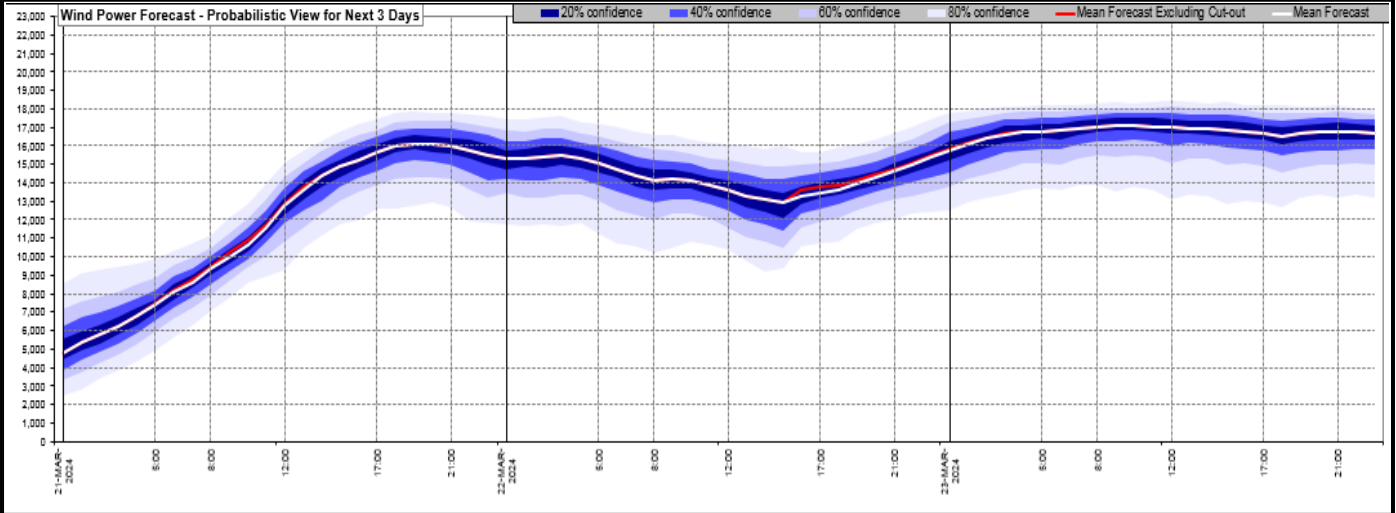
**Yesterday's Market Summary**

<a href="#">Cash Out Price (Max)</a>	£ 177.7 (SP 38)
<a href="#">Cash Out Price (Min)</a>	£ 0.1 (SP 4,5)
<a href="#">Peak Demand Yesterday</a>	37,593 MW
Minimum Demand	21,415 MW

**Interconnector Net Transfer Capacity (MWs)**

Today	Import	Export	Remarks
Netherlands (BritNed)	1000	1000	Fully Available
France (IFA)	1000	1000	Partially Available
Belgium (Nemo)	1000	1000	Fully Available
Ireland (EWIC)	500	500	Fully Available
France (ElecLink)	1000	1000	Fully Available
Northern Ireland (MOYLE)	500	500	Fully Available
Norway (NSL)	1424	1424	Fully Available
France (IFA2)	1014	1014	Fully Available
Viking Link	1430	1430	Fully Available

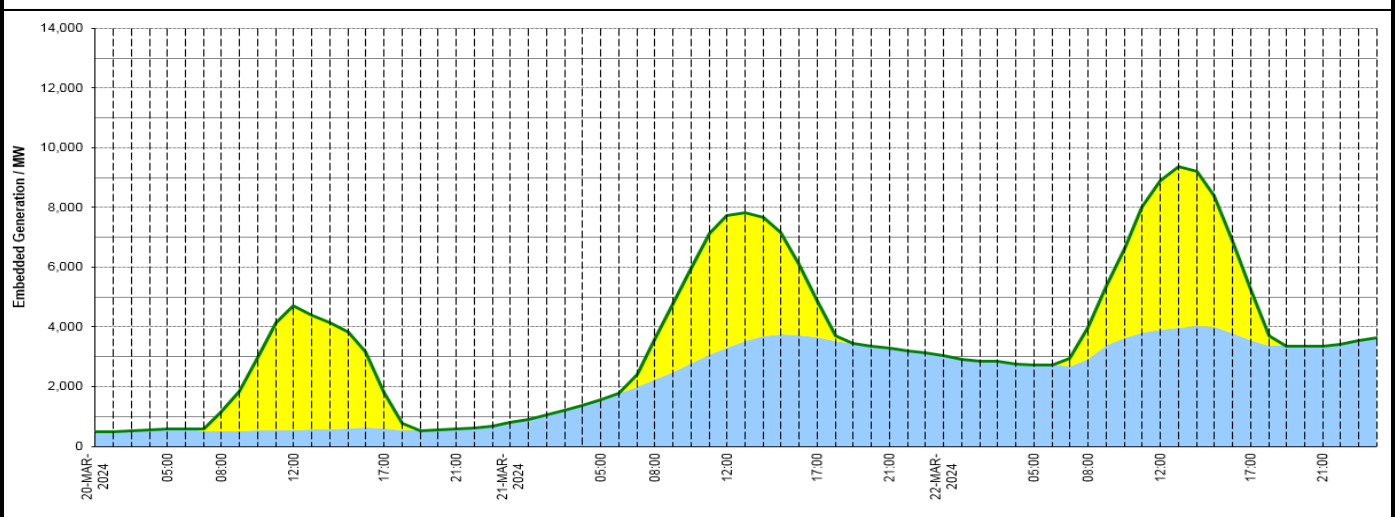
**Wind Power Forecast**



**Expected embedded generation (MWs)**

**Embedded Generation Forecast**

Embedded Generation Estimates													Last run: 21-Mar-2024 04:32:22				
	20-MAR-2024					21-MAR-2024					22-MAR-2024						
	05:00	08:00	12:00	17:00	21:00	00:00	05:00	08:00	12:00	17:00	21:00	00:00	05:00	08:00	12:00	17:00	21:00
Solar (MW)	0	626	4157	1216	0	0	0	1324	4431	1224	0	0	0	1061	4997	1660	0
Wind (MW)	583	513	552	600	574	799	1549	2245	3306	3647	3298	3034	2737	2935	3903	3573	3343
STOR (MW)	0	0	0	0	0	0	0	0	0	0	0	0	0	0	0	0	0
<b>Total (MW)</b>	<b>583</b>	<b>1139</b>	<b>4709</b>	<b>1816</b>	<b>574</b>	<b>799</b>	<b>1549</b>	<b>3569</b>	<b>7737</b>	<b>4871</b>	<b>3298</b>	<b>3034</b>	<b>2737</b>	<b>3996</b>	<b>8900</b>	<b>5233</b>	<b>3343</b>



Weather	Source	Commentary
Latest forecast (Summary)	<a href="#">Met Office</a> <a href="#">SEPA</a> <a href="#">Natural Resources Wales</a>	<b>Today:</b> Low cloud and fog clearing in the south, and staying mostly dry here with some hazy sunshine through the afternoon. Rain and strong winds in the north moving southeast, with sunshine and blustery showers behind, feeling colder here. <b>Tonight:</b> Band of rain continues moving southeast to lie across southwest England and the Midlands by morning. Cloudy and mild to the south. Colder and clearer to the north and windy.
General Weather Concerns e.g. wind, rain, snow, flooding, GB Weather Warnings	<a href="#">Met Office</a> <a href="#">Weather Warnings</a> <a href="#">SEPA</a> <a href="#">Natural Resources Wales</a>	<b>UK Weather Warnings</b> No weather warnings are in force for the UK  <b>Flood Warnings</b> 4 flood warnings and 71 flood alerts issued for England.  0 flood warnings and 0 flood alerts issued for Scotland.  0 flood warnings and 0 flood alerts issued for Wales

Further Information	
BM Reports	<a href="https://www.bmreports.com">https://www.bmreports.com</a>
System Balancing Reports	<a href="https://www.nationalgrideso.com/industry-information/industry-data-and-reports/system-balancing-reports">https://www.nationalgrideso.com/industry-information/industry-data-and-reports/system-balancing-reports</a>
Forecast Volumes and Costs	<a href="https://www.nationalgrideso.com/industry-information/industry-data-and-reports/forecast-volumes-and-costs">https://www.nationalgrideso.com/industry-information/industry-data-and-reports/forecast-volumes-and-costs</a>