

National Electricity Transmission System Status Report

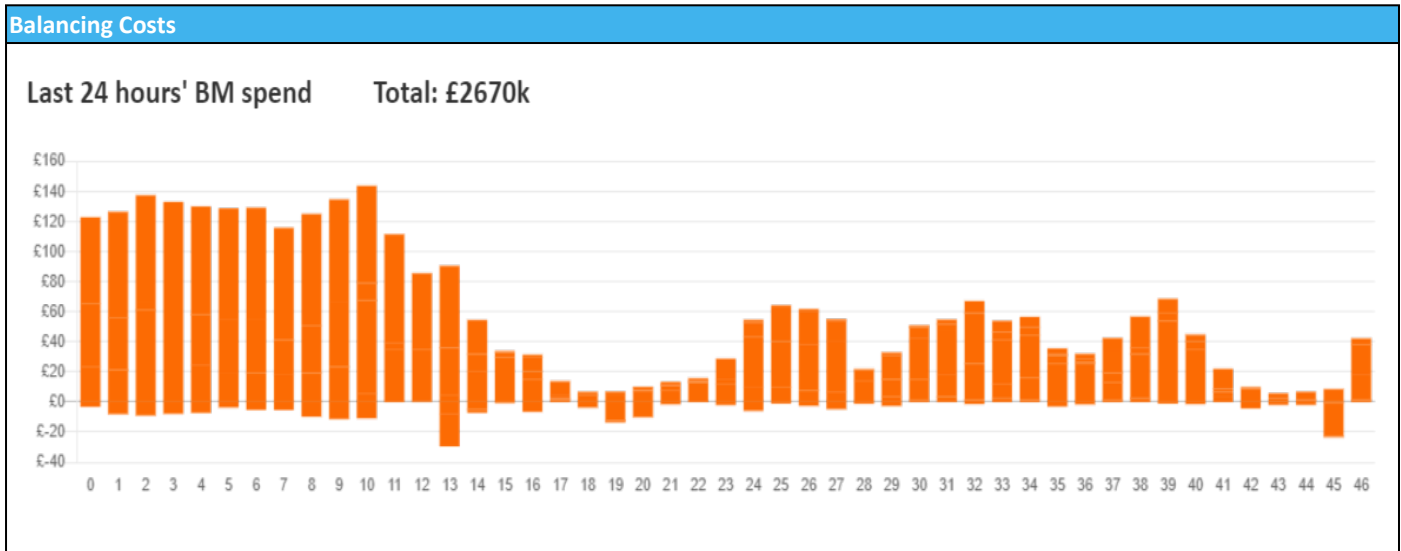


nationalgridESO

National Electricity Transmission System Status Report
Saturday 16 March 2024

Today's High Level Risk Status Forecast for the next 24h			
General Status		Voltage	
Demand		System Inertia	
System Margins		Weather	
Generation		Transmission	
Active Constraints			
System Warning			

Today's Minimum De-Rated Margin	9906 (SP 22)	
Current BMU Largest Loss Risk	Generation	1600 MW
	Demand	560 MW



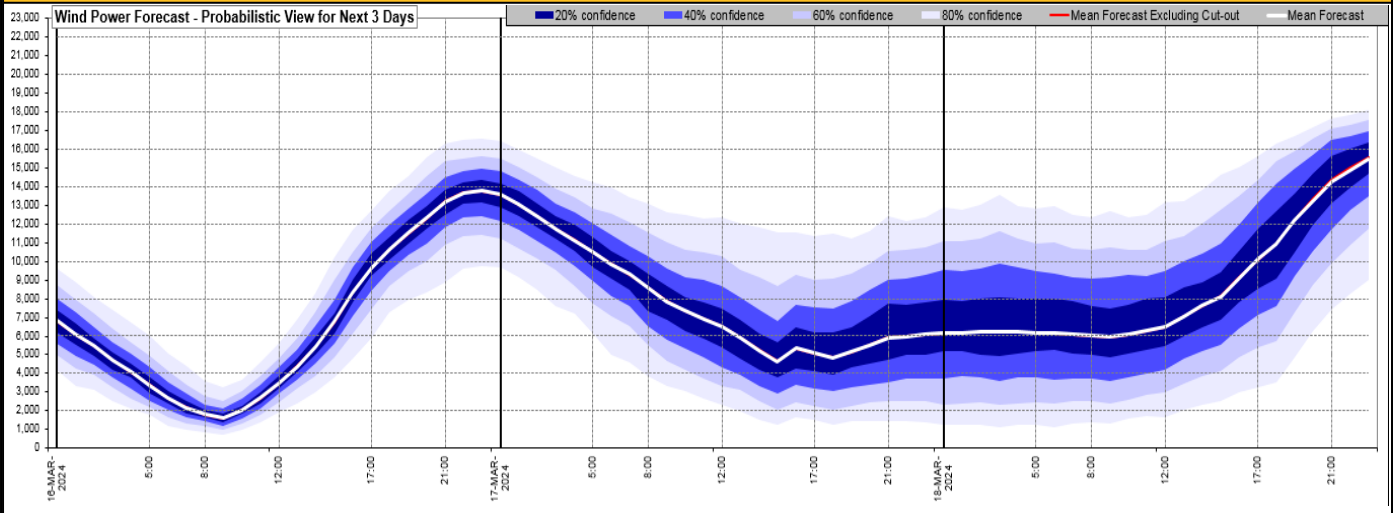
Yesterday's Market Summary

Cash Out Price (Max)	£ 93 (SP 41,42)
Cash Out Price (Min)	£ -46 (SP 15)
Peak Demand Yesterday	36,437 MW
Minimum Demand	19,785 MW

Interconnector Net Transfer Capacity (MWs)

Today	Import	Export	Remarks
Netherlands (BritNed)	1000	1000	Fully Available
France (IFA)	2000	2000	Fully Available
Belgium (Nemo)	1000	1000	Fully Available
Ireland (EWIC)	500	500	Fully Available
France (ElecLink)	1000	1000	Fully Available
Northern Ireland (MOYLE)	500	500	Fully Available
Norway (NSL)	1424	1424	Fully Available
France (IFA2)	1014	1014	Fully Available
Viking Link	1430	1430	Fully Available

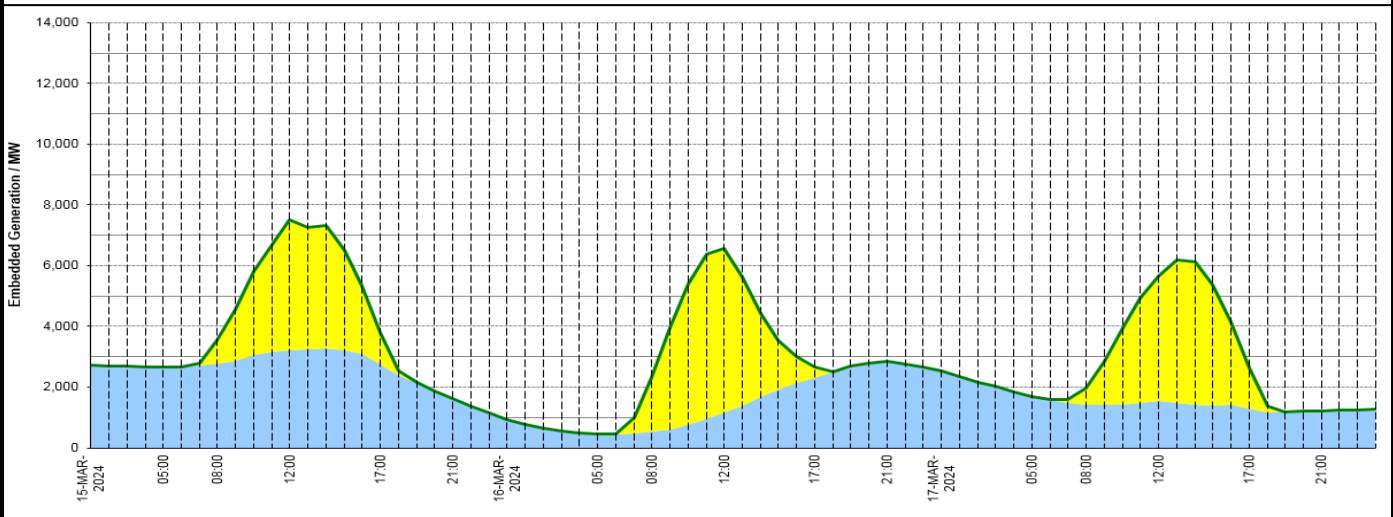
Wind Power Forecast



Expected embedded generation (MWs)

Embedded Generation Forecast

Embedded Generation Estimates													Last run: 16-Mar-2024 04:32:43				
	15-MAR-2024					16-MAR-2024					17-MAR-2024						
	05:00	08:00	12:00	17:00	21:00	00:00	05:00	08:00	12:00	17:00	21:00	00:00	05:00	08:00	12:00	17:00	21:00
Solar (MW)	0	796	4306	1070	0	0	0	1781	5395	350	0	0	0	575	4112	1322	0
Wind (MW)	2655	2759	3212	2736	1629	915	444	540	1159	2308	2847	2536	1682	1405	1532	1293	1215
STOR (MW)	0	0	0	0	0	0	0	0	0	0	0	0	0	0	0	0	0
Total (MW)	2655	3555	7518	3806	1629	915	444	2321	6554	2658	2847	2536	1682	1980	5644	2615	1215



Weather	Source	Commentary
Latest forecast (Summary)	Met Office SEPA Natural Resources Wales	<p>Today: A chilly and bright start, especially in the north and east. However, cloud and rain will quickly move into western areas. This then moving north and eastwards through the day. Pleasant in any sunshine but cooler than of late.</p> <p>Tonight: Cloudy with outbreaks of rain, which could be heavy at times. Turning drier in western parts later in the evening. Milder than the previous night.</p>
General Weather Concerns e.g. wind, rain, snow, flooding, GB Weather Warnings	Met Office Weather Warnings SEPA Natural Resources Wales	<p>UK Weather Warnings No weather warnings are in force for the UK</p> <p>Flood Warnings 17 flood warnings and 107 flood alerts issued for England.</p> <p>0 flood warnings and 0 flood alerts issued for Scotland.</p> <p>0 flood warnings and 0 flood alerts issued for Wales</p>

Further Information	
BM Reports	https://www.bmreports.com
System Balancing Reports	https://www.nationalgrideso.com/industry-information/industry-data-and-reports/system-balancing-reports
Forecast Volumes and Costs	https://www.nationalgrideso.com/industry-information/industry-data-and-reports/forecast-volumes-and-costs