

# National Electricity Transmission System Status Report

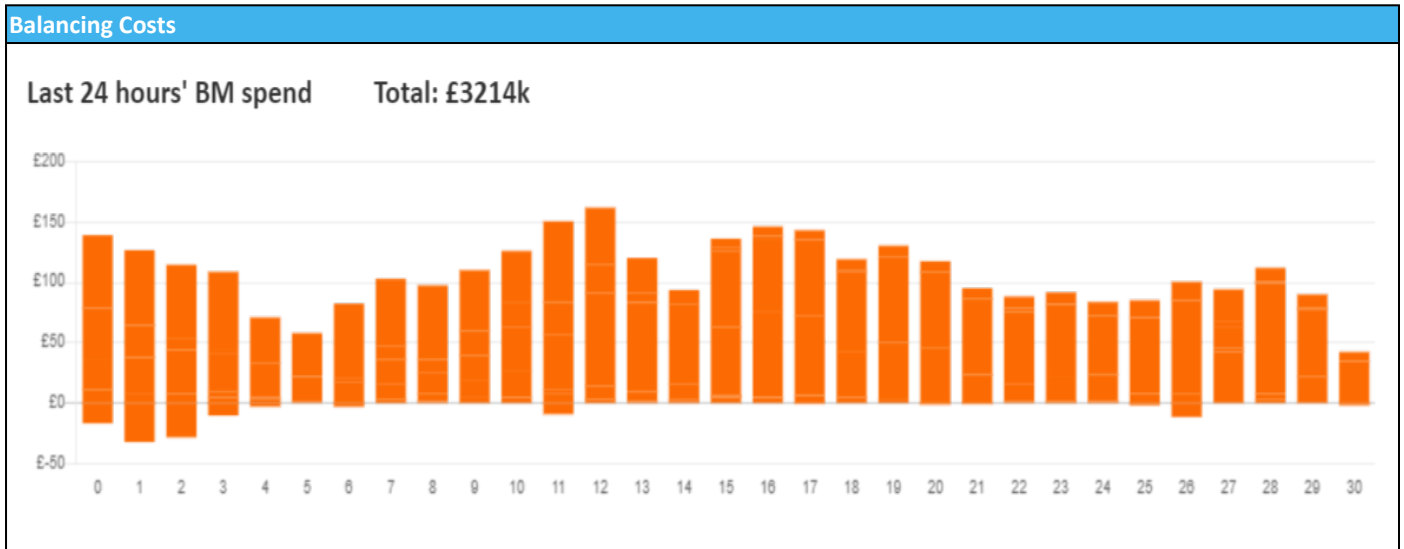


nationalgridESO

National Electricity Transmission System Status Report  
Saturday 09 March 2024

Today's High Level Risk Status Forecast for the next 24h			
General Status		Voltage	
Demand		System Inertia	
System Margins		Weather	
Generation		Transmission	
Active Constraints			
<a href="#">System Warning</a>			

<a href="#">Today's Minimum De-Rated Margin</a>	14,762 (SP 38)	
Current BMU Largest Loss Risk	Generation	1500 MW
	Demand	560 MW



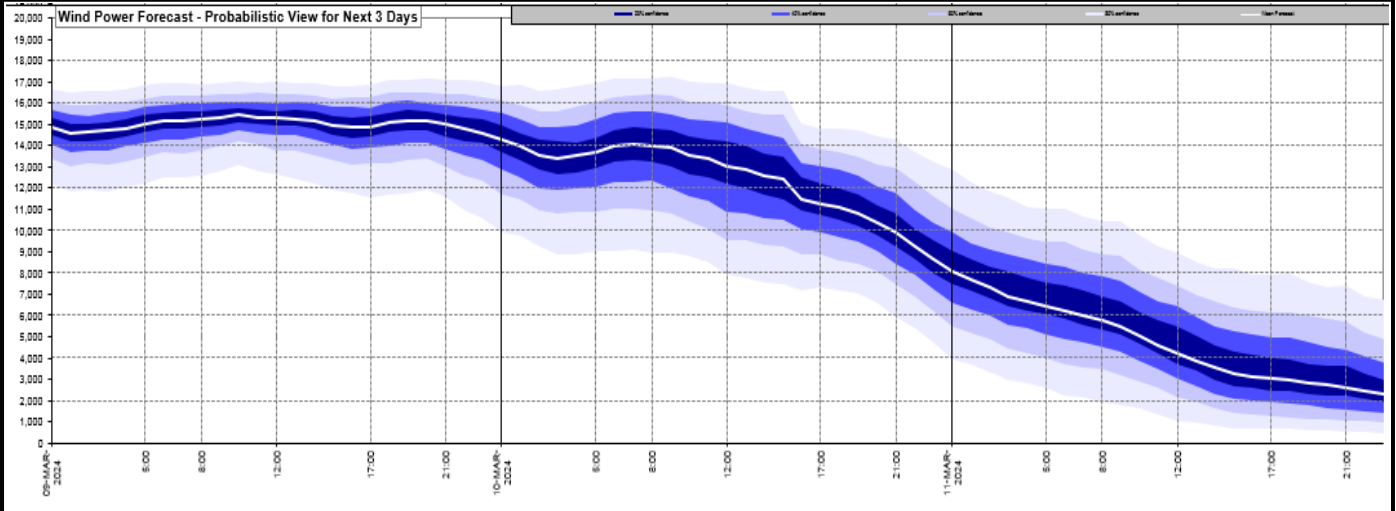
**Yesterday's Market Summary**

<a href="#">Cash Out Price (Max)</a>	£ 96.9 (SP 32)
<a href="#">Cash Out Price (Min)</a>	£ -20 (SP 29)
<a href="#">Peak Demand Yesterday</a>	36,909 MW
Minimum Demand	19,890 MW

**Interconnector Net Transfer Capacity (MWs)**

Today	Import	Export	Remarks
Netherlands (BritNed)	1000	1000	Fully Available
France (IFA)	2000	2000	Fully Available
Belgium (Nemo)	1000	1000	Fully Available
Ireland (EWIC)	500	500	Fully Available
France (ElecLink)	1000	1000	Fully Available
Northern Ireland (MOYLE)	500	500	Fully Available
Norway (NSL)	1424	1424	Fully Available
France (IFA2)	1014	1014	Fully Available
Viking Link	1430	1430	Fully Available

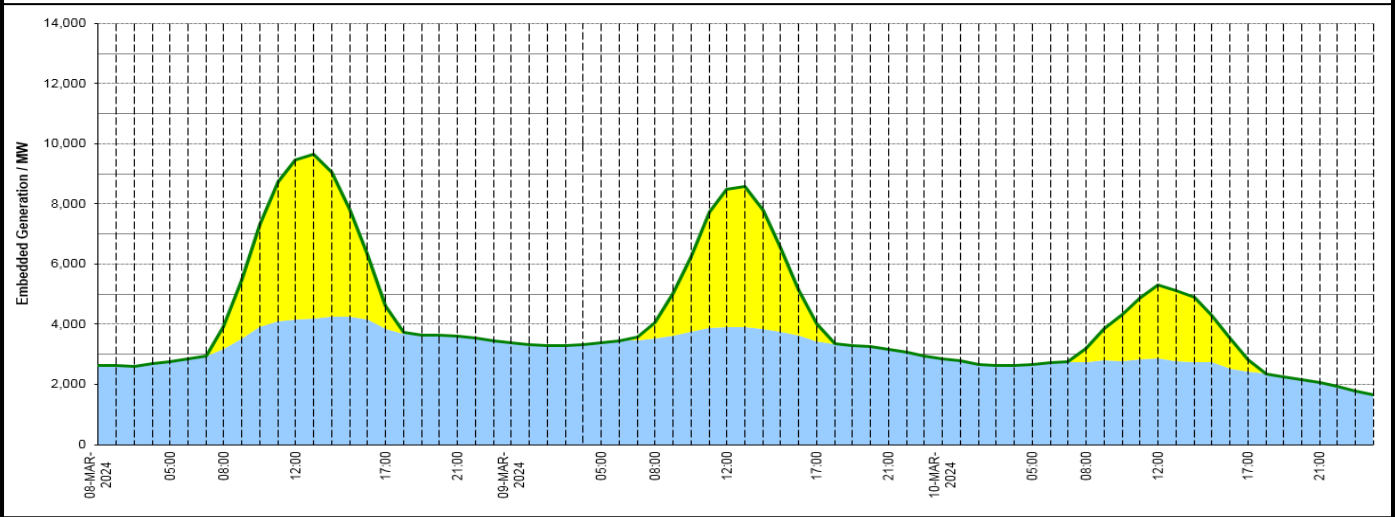
**Wind Power Forecast**



**Expected embedded generation (MWs)**

**Embedded Generation Forecast**

Embedded Generation Estimates																Last run: 09-Mar-2024 04:33:10	
	08-MAR-2024					09-MAR-2024					10-MAR-2024						
	05:00	08:00	12:00	17:00	21:00	00:00	05:00	08:00	12:00	17:00	21:00	00:00	05:00	08:00	12:00	17:00	21:00
Solar (MW)	0	725	5289	782	0	0	0	515	4581	575	0	0	0	448	2446	393	0
Wind (MW)	2755	3194	4163	3829	3601	3378	3396	3533	3909	3429	3177	2836	2653	2738	2870	2435	2068
STOR (MW)	0	0	0	0	0	0	0	0	0	0	0	0	0	0	0	0	0
<b>Total (MW)</b>	<b>2755</b>	<b>3919</b>	<b>9452</b>	<b>4611</b>	<b>3601</b>	<b>3378</b>	<b>3396</b>	<b>4048</b>	<b>8490</b>	<b>4004</b>	<b>3177</b>	<b>2836</b>	<b>2653</b>	<b>3186</b>	<b>5316</b>	<b>2828</b>	<b>2068</b>



Weather	Source	Commentary
Latest forecast (Summary)	<a href="#">Met Office</a> <a href="#">SEPA</a> <a href="#">Natural Resources Wales</a>	<p><b>Today:</b> Remaining unsettled on Saturday with showers continuing to spread northeast through the day. Cloudy for most, although some brighter spells possible at times. Brisk easterly winds making it feel cold.</p> <p><b>Tonight:</b> Further rain will push northwards, turning particularly heavy in southern and eastern areas. Rain may turn to sleet or snow in northeast Scotland. Drier in the far northwest. Windy.</p>
General Weather Concerns e.g. wind, rain, snow, flooding, GB Weather Warnings	<a href="#">Met Office</a> <a href="#">Weather Warnings</a> <a href="#">SEPA</a> <a href="#">Natural Resources</a>	<p><b>UK Weather Warnings</b> No weather warnings are in force for the UK</p> <p><b>Flood Warnings</b> 23 flood warnings and 85 flood alerts issued for England.</p> <p>0 flood warnings and 3 flood alerts issued for Scotland.</p>

Weather	Source	Commentary
	<a href="#">Wales</a>	0 flood warnings and 1 flood alerts issued for Wales

*Contains public sector information licensed under the Open Government Licence v1.0*

Further Information	
BM Reports	<a href="https://www.bmreports.com">https://www.bmreports.com</a>
System Balancing Reports	<a href="https://www.nationalgrideso.com/industry-information/industry-data-and-reports/system-balancing-reports">https://www.nationalgrideso.com/industry-information/industry-data-and-reports/system-balancing-reports</a>
Forecast Volumes and Costs	<a href="https://www.nationalgrideso.com/industry-information/industry-data-and-reports/forecast-volumes-and-costs">https://www.nationalgrideso.com/industry-information/industry-data-and-reports/forecast-volumes-and-costs</a>