

# National Electricity Transmission System Status Report

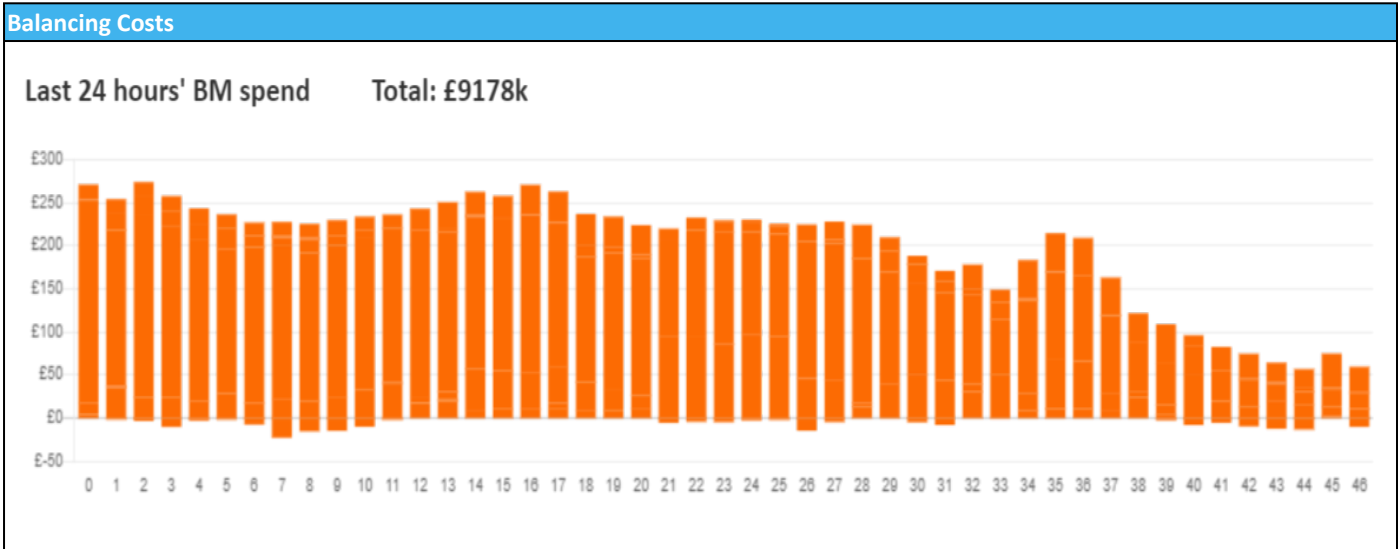


nationalgridESO

National Electricity Transmission System Status Report  
Wednesday 06 March 2024

Today's High Level Risk Status Forecast for the next 24h			
General Status		Voltage	
Demand		System Inertia	
System Margins		Weather	
Generation		Transmission	
Active Constraints			
<a href="#">System Warning</a>			

<a href="#">Today's Minimum De-Rated Margin</a>	6,390 (SP 36)	
Current BMU Largest Loss Risk	Generation	1500 MW
	Demand	560 MW



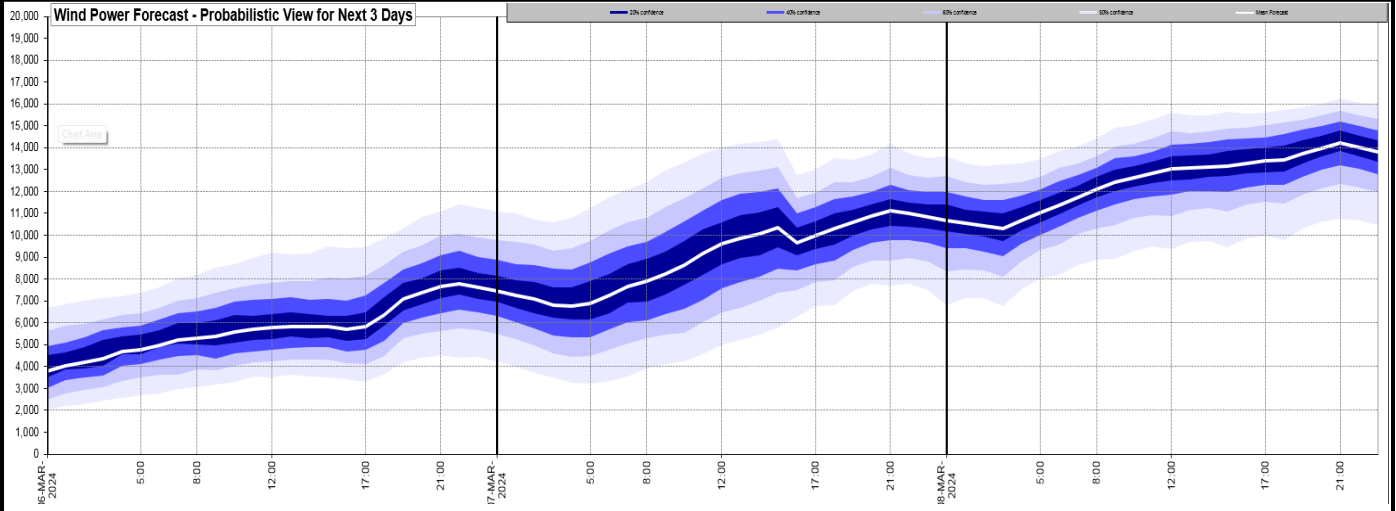
**Yesterday's Market Summary**

<a href="#">Cash Out Price (Max)</a>	£ 101 (SP 37,38)
<a href="#">Cash Out Price (Min)</a>	£ 31 (SP 23,24,26,27)
<a href="#">Peak Demand Yesterday</a>	41,373 MW
Minimum Demand	22,654 MW

**Interconnector Net Transfer Capacity (MWs)**

Today	Import	Export	Remarks
Netherlands (BritNed)	1000	1000	Fully Available
France (IFA)	2000	2000	Fully Available
Belgium (Nemo)	1000	1000	Fully Available
Ireland (EWIC)	500	500	Fully Available
France (ElecLink)	1000	1000	Fully Available
Northern Ireland (MOYLE)	500	500	Fully Available
Norway (NSL)	1424	1424	Fully Available
France (IFA2)	1014	1014	Fully Available
Viking Link	1430	1430	Fully Available

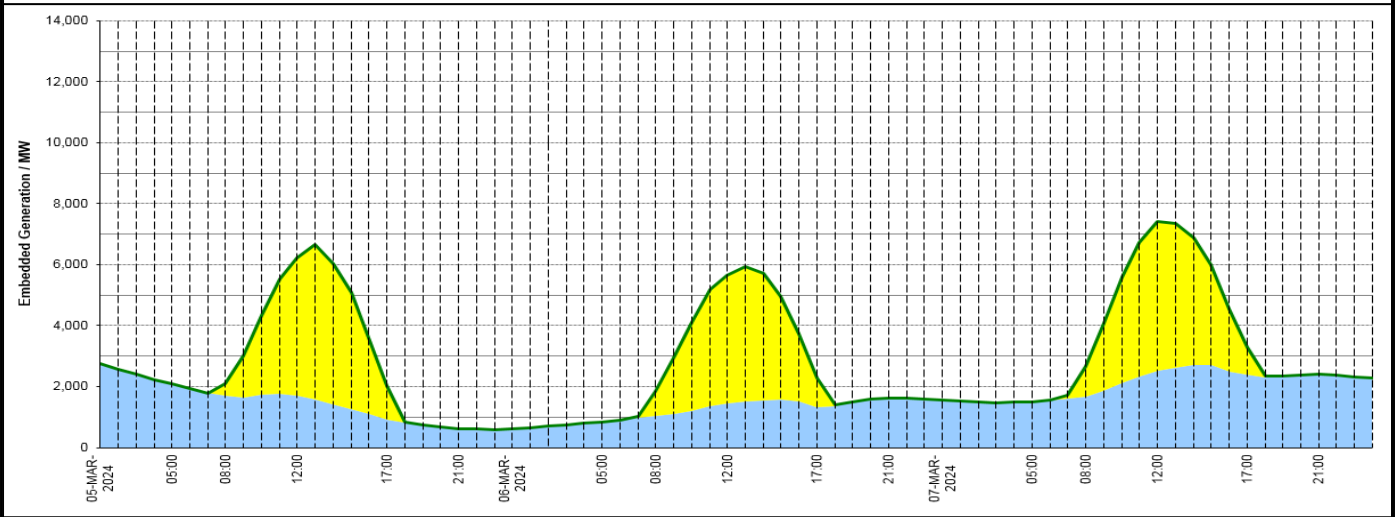
**Wind Power Forecast**



**Expected embedded generation (MWs)**

**Embedded Generation Forecast**

Embedded Generation Estimates														Last run: 06-Mar-2024 02:32:50			
	05-MAR-2024					06-MAR-2024					07-MAR-2024						
	05:00	08:00	12:00	17:00	21:00	00:00	05:00	08:00	12:00	17:00	21:00	00:00	05:00	08:00	12:00	17:00	21:00
Solar (MW)	0	395	4519	1110	0	0	0	796	4195	959	0	0	0	982	4911	878	0
Wind (MW)	2080	1694	1702	916	630	616	838	1041	1445	1331	1622	1563	1494	1669	2519	2401	2422
STOR (MW)	0	0	0	0	0	0	0	0	0	0	0	0	0	0	0	0	0
<b>Total (MW)</b>	<b>2080</b>	<b>2089</b>	<b>6221</b>	<b>2026</b>	<b>630</b>	<b>616</b>	<b>838</b>	<b>1837</b>	<b>5640</b>	<b>2290</b>	<b>1622</b>	<b>1563</b>	<b>1494</b>	<b>2651</b>	<b>7430</b>	<b>3279</b>	<b>2422</b>



Weather	Source	Commentary
Latest forecast (Summary)	<a href="#">Met Office</a> <a href="#">SEPA</a> <a href="#">Natural Resources Wales</a>	<p><b>Today:</b> Outbreaks of rain continuing to clear eastern England and parts of the northwest. Some slow moving, and potentially heavy showers affecting the SE corner into the afternoon. Otherwise, many areas will be dry with sunny spells.</p> <p><b>Tonight:</b> Cloudy with patchy outbreaks of rain and drizzle near North Sea coasts, otherwise dry with clear spells and a few fog patches developing. Turning frosty where skies remain cloud free.</p>
General Weather Concerns e.g. wind, rain, snow, flooding, GB Weather Warnings	<a href="#">Met Office</a> <a href="#">Weather Warnings</a> <a href="#">SEPA</a> <a href="#">Natural Resources Wales</a>	<p><b>UK Weather Warnings</b> No weather warnings are in force for the UK</p> <p><b>Flood Warnings</b> 34 flood warnings and 124 flood alerts issued for England.</p> <p>0 flood warnings and 0 flood alerts issued for Scotland.</p> <p>0 flood warnings and 0 flood alerts issued for Wales</p>

Further Information	
BM Reports	<a href="https://www.bmreports.com">https://www.bmreports.com</a>
System Balancing Reports	<a href="https://www.nationalgrideso.com/industry-information/industry-data-and-reports/system-balancing-reports">https://www.nationalgrideso.com/industry-information/industry-data-and-reports/system-balancing-reports</a>
Forecast Volumes and Costs	<a href="https://www.nationalgrideso.com/industry-information/industry-data-and-reports/forecast-volumes-and-costs">https://www.nationalgrideso.com/industry-information/industry-data-and-reports/forecast-volumes-and-costs</a>