

**National Electricity  
Transmission System Status Report**

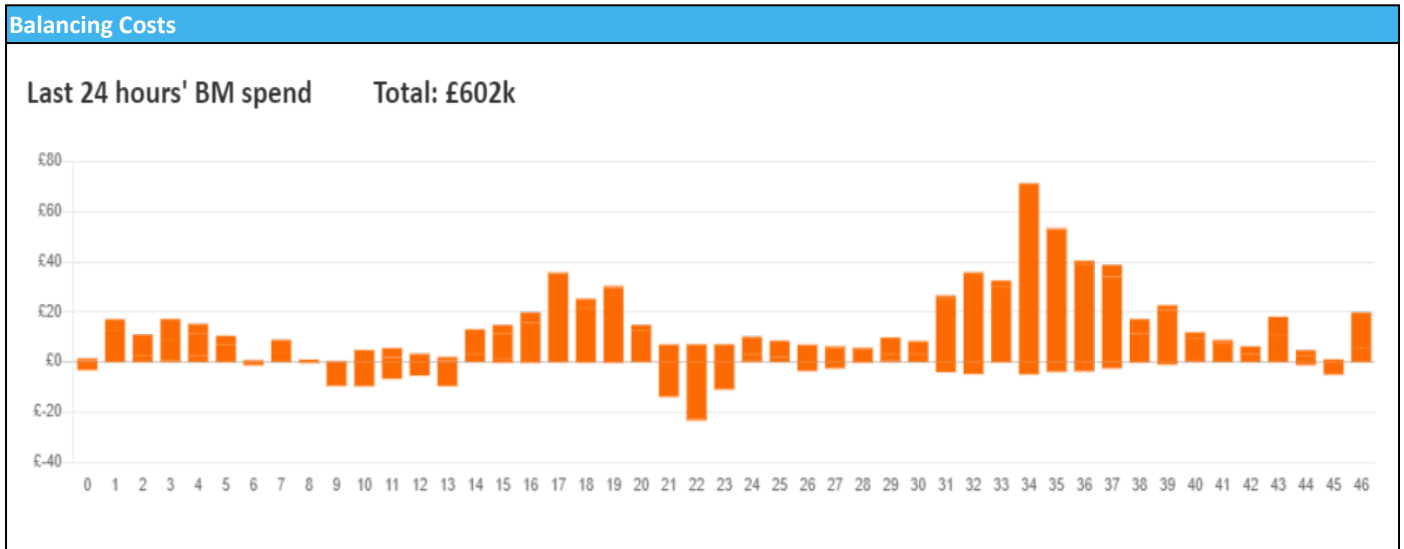


national**grid**ESO

National Electricity Transmission System Status Report  
Saturday 24 February 2024

Today's High Level Risk Status Forecast for the next 24h			
General Status		Voltage	
Demand		System Inertia	
System Margins		Weather	
Generation		Transmission	
Active Constraints			
<a href="#">System Warning</a>			

<a href="#">Today's Minimum De-Rated Margin</a>	11,820 (SP 2)	
Current BMU Largest Loss Risk	Generation	1500 MW
	Demand	560 MW



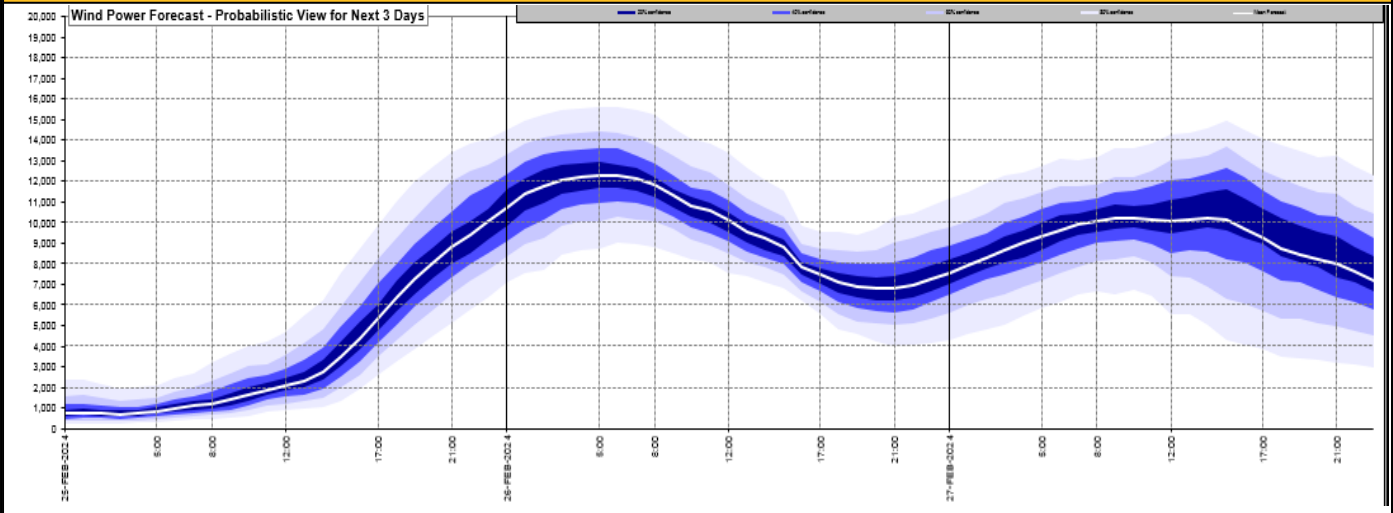
**Yesterday's Market Summary**

<a href="#">Cash Out Price (Max)</a>	£99.99 (SP 38)
<a href="#">Cash Out Price (Min)</a>	£47.8 (SP 6,7,11,12,15)
<a href="#">Peak Demand Yesterday</a>	38,220 MW
Minimum Demand	23,527 MW

**Interconnector Net Transfer Capacity (MWs)**

Today	Import	Export	Remarks
Netherlands (BritNed)	1000	1000	Fully Available
France (IFA)	2000	2000	Fully Available
Belgium (Nemo)	1000	1000	Fully Available
Ireland (EWIC)	500	500	Fully Available
France (ElecLink)	1000	1000	Fully Available
Northern Ireland (MOYLE)	500	500	Fully Available
Norway (NSL)	1400	1400	Fully Available
France (IFA2)	1014	1014	Fully Available
Viking Link	1430	1430	Fully Available

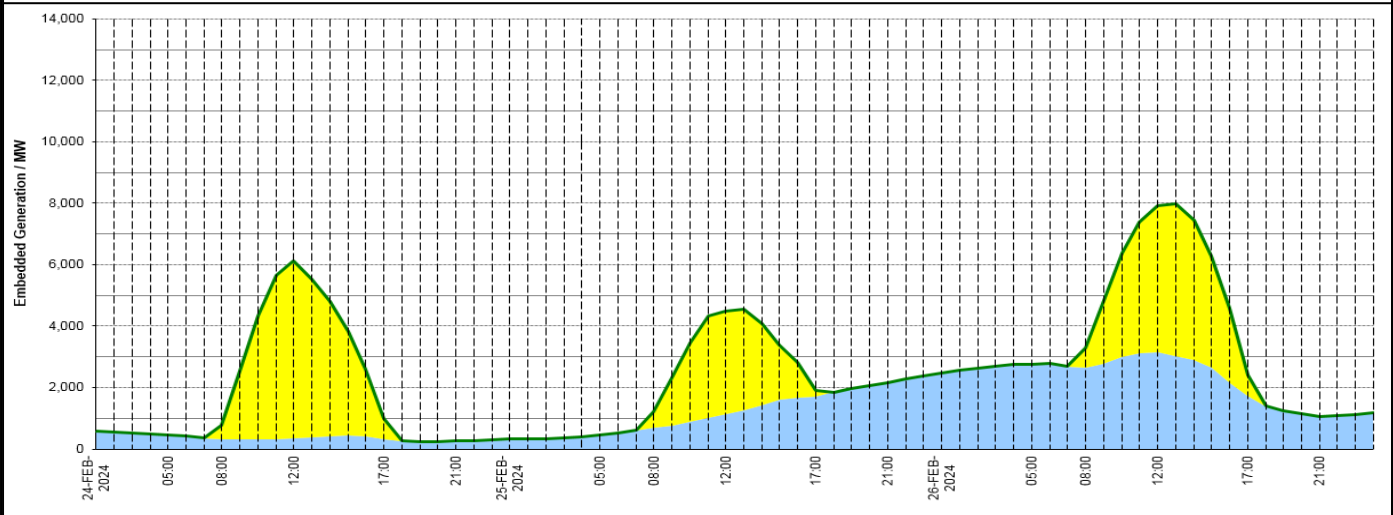
**Wind Power Forecast**



**Expected embedded generation (MWs)**

**Embedded Generation Forecast**

	24-FEB-2024					25-FEB-2024					26-FEB-2024						
	05:00	08:00	12:00	17:00	21:00	00:00	05:00	08:00	12:00	17:00	21:00	00:00	05:00	08:00	12:00	17:00	21:00
Solar (MW)	0	437	5765	678	0	0	0	526	3362	202	0	0	0	644	4777	680	0
Wind (MW)	453	327	347	308	257	325	459	695	1122	1716	2166	2486	2754	2658	3136	1738	1071
STOR (MW)	0	0	0	0	0	0	0	0	0	0	0	0	0	0	0	0	0
<b>Total (MW)</b>	<b>453</b>	<b>764</b>	<b>6112</b>	<b>986</b>	<b>257</b>	<b>325</b>	<b>459</b>	<b>1221</b>	<b>4484</b>	<b>1918</b>	<b>2166</b>	<b>2486</b>	<b>2754</b>	<b>3302</b>	<b>7913</b>	<b>2418</b>	<b>1071</b>



Weather	Source	Commentary
Latest forecast (Summary)	<a href="#">Met Office</a> <a href="#">SEPA</a> <a href="#">Natural Resources Wales</a>	<p><b>Today:</b> Fog and frost clearing to leave areas with sunny spells and a few showers. However, wet and windy weather in the southwest will gradually spread to other southern areas. Feeling cold underneath the rain, though pleasant in any sunshine.</p> <p><b>Tonight:</b> Rain in the south gradually clearing most, though lingering in the far southeast. Mostly dry elsewhere with some coastal showers. Turning chilly with a patchy frost mainly in the north.</p>
General Weather Concerns e.g. wind, rain, snow, flooding, GB Weather Warnings	<a href="#">Met Office</a> <a href="#">Weather Warnings</a> <a href="#">SEPA</a> <a href="#">Natural Resources Wales</a>	<p><b>UK Weather Warnings</b> Yellow warning of rain Areas affected: South West England</p> <p>Starts: 06:00 GMT on Sun 25 February Ends: 18:00 GMT on Sun 25 February Heavy rain may cause some flooding and disruption in places.</p> <ul style="list-style-type: none"> <li>- Bus and train services probably affected with journey times taking longer</li> <li>- Spray and flooding on roads probably making journey times longer</li> </ul> <p>Issued at: 10:19 GMT on Sat 24 February Yellow warning of rain</p>

Weather	Source	Commentary
		<p>Areas affected: London &amp; South East England</p> <p>Starts: 15:00 GMT on Sun 25 February Ends: 09:00 GMT on Mon 26 February</p> <p>Persistent rain perhaps leading to some flooding and disruption.</p> <ul style="list-style-type: none"> <li>- Spray and flooding could lead to difficult driving conditions and some road closures</li> <li>- There is a small chance that some communities will become cut off by flooded roads</li> <li>- There is a small chance that homes and businesses could be flooded, causing damage to some buildings</li> <li>- Where flooding occurs, there is a slight chance of delays or cancellations to train and bus services</li> </ul> <p>Issued at: 10:30 GMT on Sat 24 February</p>
		<p><b>Flood Warnings</b></p> <p>62 flood warnings and 168 flood alerts issued for England.</p> <p>0 flood warnings and 0 flood alerts issued for Scotland.</p> <p>1 flood warnings and 6 flood alerts issued for Wales</p>

*Contains public sector information licensed under the Open Government Licence v1.0*

Further Information	
BM Reports	<a href="https://www.bmreports.com">https://www.bmreports.com</a>
System Balancing Reports	<a href="https://www.nationalgrideso.com/industry-information/industry-data-and-reports/system-balancing-reports">https://www.nationalgrideso.com/industry-information/industry-data-and-reports/system-balancing-reports</a>
Forecast Volumes and Costs	<a href="https://www.nationalgrideso.com/industry-information/industry-data-and-reports/forecast-volumes-and-costs">https://www.nationalgrideso.com/industry-information/industry-data-and-reports/forecast-volumes-and-costs</a>