

# National Electricity Transmission System Status Report

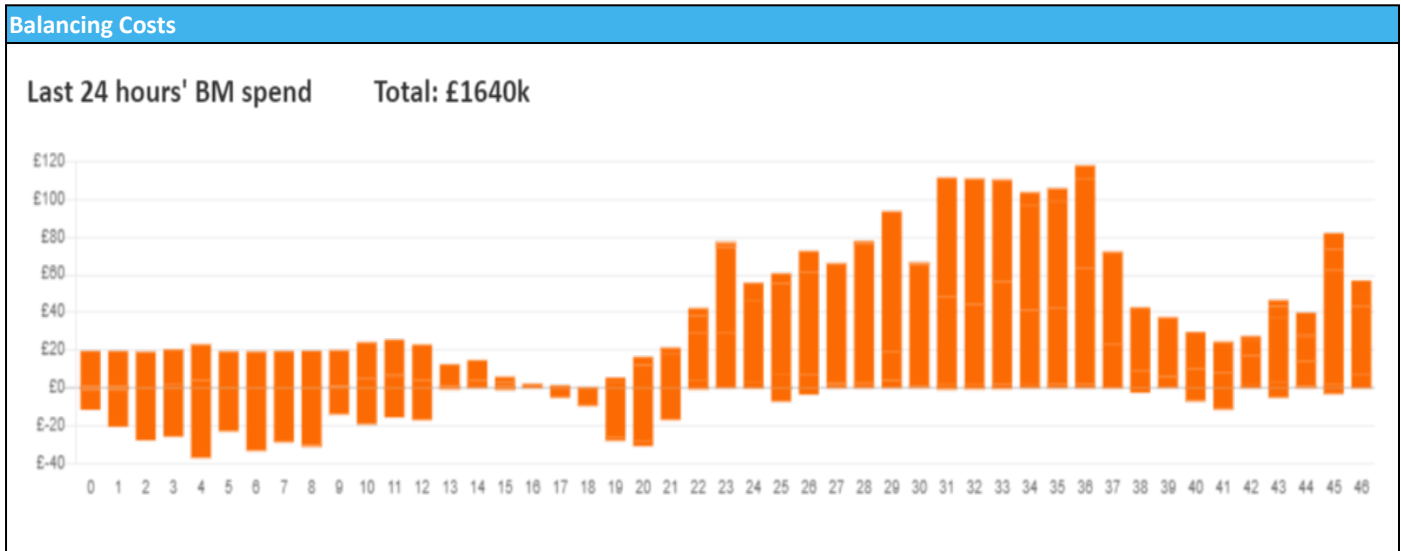


nationalgridESO

National Electricity Transmission System Status Report  
Sunday 18 February 2024

Today's High Level Risk Status Forecast for the next 24h			
General Status		Voltage	
Demand		System Inertia	
System Margins		Weather	
Generation		Transmission	
Active Constraints			
<a href="#">System Warning</a>			

<a href="#">Today's Minimum De-Rated Margin</a>	11,111 (SP 36)	
Current BMU Largest Loss Risk	Generation	1600 MW
	Demand	560 MW



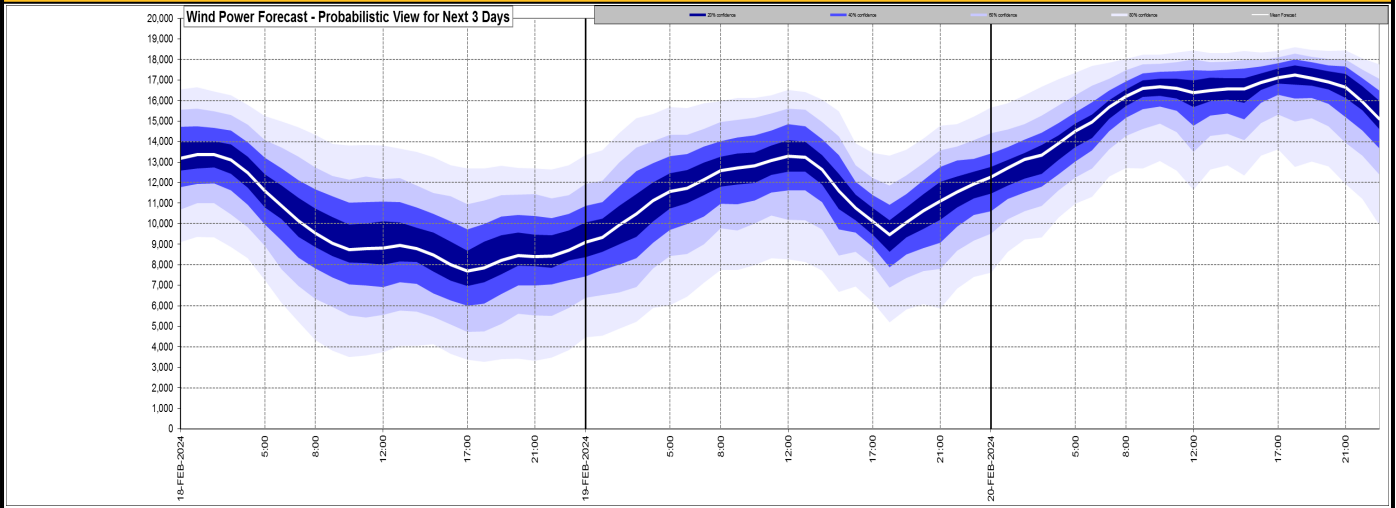
**Yesterday's Market Summary**

<a href="#">Cash Out Price (Max)</a>	£ 101.50 (SP 45)
<a href="#">Cash Out Price (Min)</a>	£ 25.13 (SP 6)
<a href="#">Peak Demand Yesterday</a>	36,304 MW
Minimum Demand	20,800MW

**Interconnector Net Transfer Capacity (MWs)**

Today	Import	Export	Remarks
Netherlands (BritNed)	1000	1000	Fully Available
France (IFA)	2000	2000	Fully Available
Belgium (Nemo)	1000	1000	Fully Available
Ireland (EWIC)	500	500	Fully Available
France (ElecLink)	1000	1000	Fully Available
Northern Ireland (MOYLE)	500	500	Fully Available
Norway (NSL)	1400	1400	Fully Available
France (IFA2)	0	0	Unavailable
Viking Link	1430	1430	Fully Available

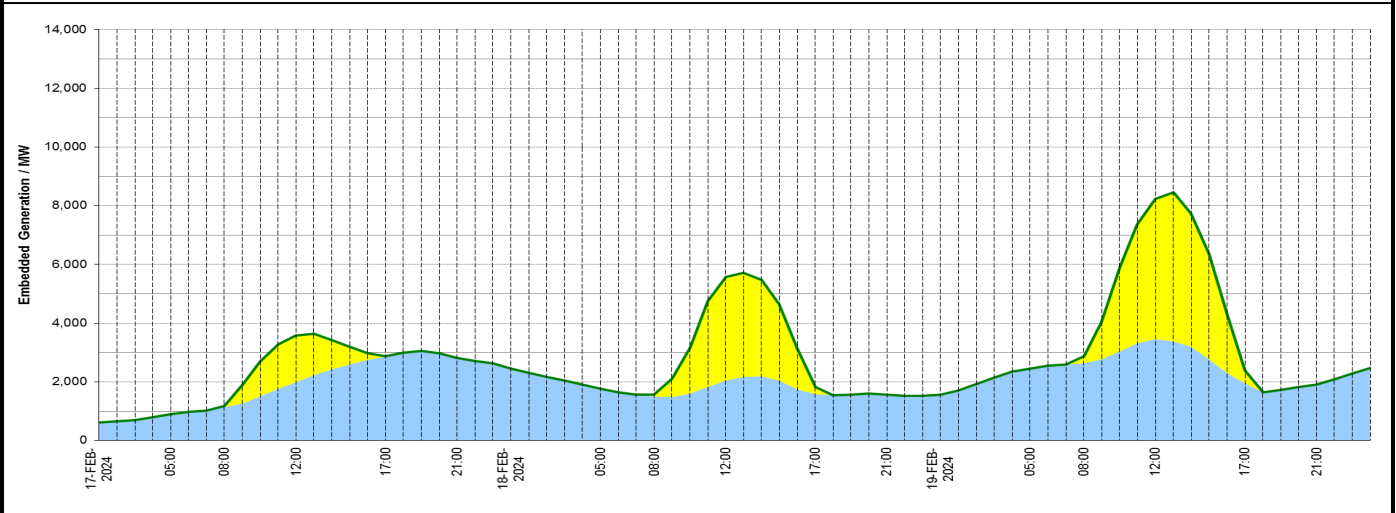
**Wind Power Forecast**



**Expected embedded generation (MWs)**

**Embedded Generation Forecast**

	17-FEB-2024					18-FEB-2024					19-FEB-2024						
	05:00	08:00	12:00	17:00	21:00	00:00	05:00	08:00	12:00	17:00	21:00	00:00	05:00	08:00	12:00	17:00	21:00
Solar (MW)	0	55	1575	20	0	0	0	62	3525	243	0	0	0	255	4777	452	0
Wind (MW)	902	1136	1997	2864	2821	2445	1772	1502	2049	1583	1559	1571	2454	2629	3464	1951	1911
STOR (MW)	0	0	0	0	0	0	0	0	0	0	0	0	0	0	0	0	0
<b>Total (MW)</b>	<b>902</b>	<b>1191</b>	<b>3572</b>	<b>2884</b>	<b>2821</b>	<b>2445</b>	<b>1772</b>	<b>1564</b>	<b>5574</b>	<b>1826</b>	<b>1559</b>	<b>1571</b>	<b>2454</b>	<b>2884</b>	<b>8241</b>	<b>2403</b>	<b>1911</b>



Weather	Source	Commentary
Latest forecast (Summary)	<a href="#">Met Office</a> <a href="#">SEPA</a> <a href="#">Natural Resources Wales</a>	<p><b>Today:</b> Rain will gradually clear the south and southeast during the morning, this sometimes heavy. Otherwise a largely fine day is on offer. Somewhat cloudy with sunny spells and the odd shower. Light winds, though breezy in the far northeast. Mild.</p> <p><b>Tonight:</b> Many central and southeastern areas staying dry overnight with clear spells and some mist and fog patches. Rain, sometimes heavy, will sweep southeastwards overnight alongside a strengthening breeze. Generally mild.</p>
General Weather Concerns e.g. wind, rain, snow, flooding, GB Weather Warnings	<a href="#">Met Office Weather Warnings</a> <a href="#">SEPA</a> <a href="#">Natural Resources Wales</a>	<p><b>UK Weather Warnings</b> Yellow warning of rain Areas affected: East Midlands   East of England   London &amp; South East England   South West England   Wales   West Midlands</p> <p>ACTIVE Started at: 15:00 GMT on Sat 17 February Ends: 09:00 GMT on Sun 18 February</p> <p><b>Flood Warnings</b> 19 flood warnings and 173 flood alerts issued for England. 0 flood warnings and 0 flood alerts issued for Scotland. 0 flood warnings and 20 flood alerts issued for Wales</p>

Further Information	
BM Reports	<a href="https://www.bmreports.com">https://www.bmreports.com</a>
System Balancing Reports	<a href="https://www.nationalgrideso.com/industry-information/industry-data-and-reports/system-balancing-reports">https://www.nationalgrideso.com/industry-information/industry-data-and-reports/system-balancing-reports</a>
Forecast Volumes and Costs	<a href="https://www.nationalgrideso.com/industry-information/industry-data-and-reports/forecast-volumes-and-costs">https://www.nationalgrideso.com/industry-information/industry-data-and-reports/forecast-volumes-and-costs</a>