

**National Electricity
Transmission System Status Report**

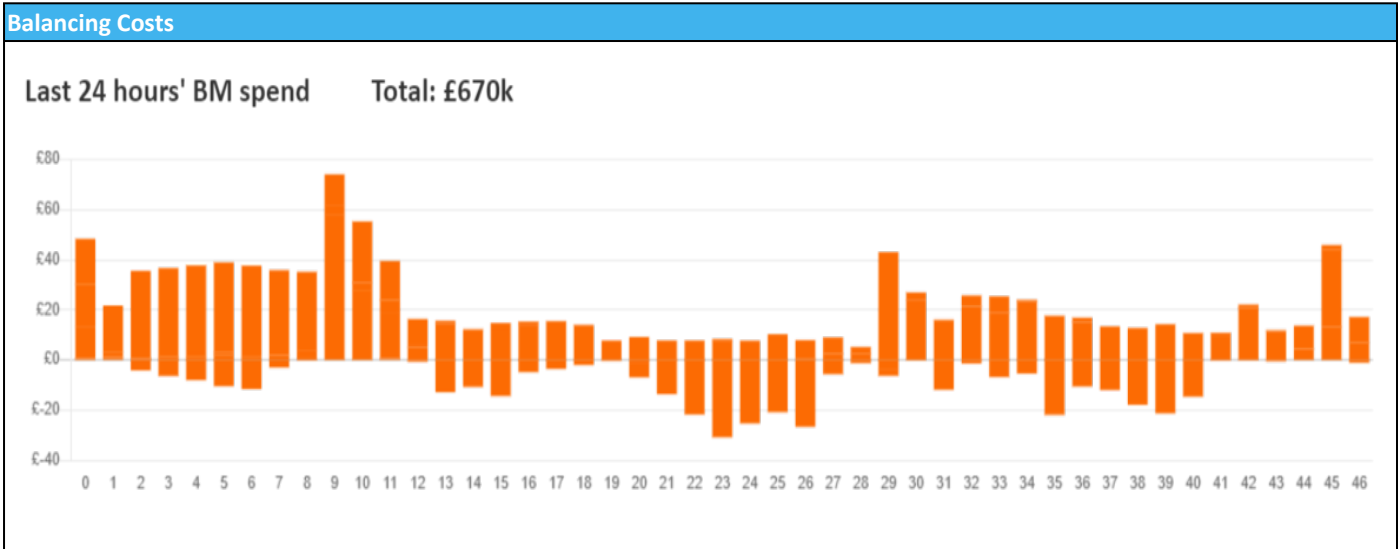


national**grid**ESO

National Electricity Transmission System Status Report
Friday 16 February 2024

Today's High Level Risk Status Forecast for the next 24h			
General Status		Voltage	
Demand		System Inertia	
System Margins		Weather	
Generation		Transmission	
Active Constraints			
System Warning			

Today's Minimum De-Rated Margin	10534 (SP 37)	
Current BMU Largest Loss Risk	Generation	1500 MW
	Demand	560 MW



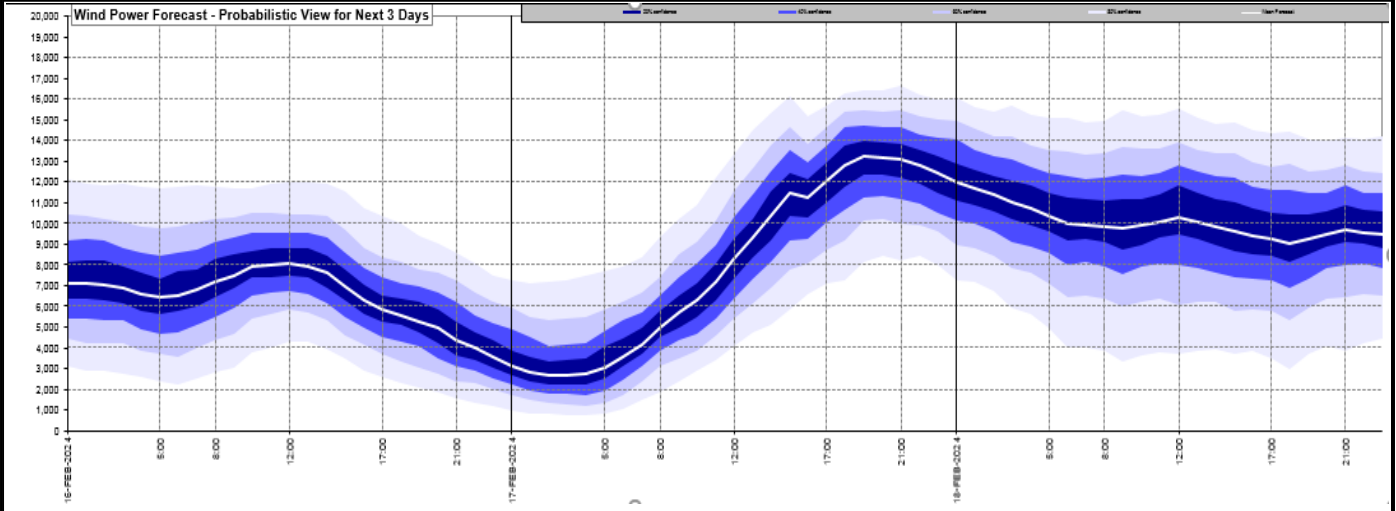
Yesterday's Market Summary

Cash Out Price (Max)	£ 102.99 (SP 31)
Cash Out Price (Min)	£ 40.80 (SP 8)
Peak Demand Yesterday	38,881 MW
Minimum Demand	21,500MW

Interconnector Net Transfer Capacity (MWs)

Today	Import	Export	Remarks
Netherlands (BritNed)	1000	1000	Fully Available
France (IFA)	2000	2000	Fully Available
Belgium (Nemo)	1000	1000	Fully Available
Ireland (EWIC)	500	500	Fully Available
France (ElecLink)	1000	1000	Fully Available
Northern Ireland (MOYLE)	500	500	Fully Available
Norway (NSL)	1400	1400	Fully Available
France (IFA2)	0	0	Unavailable
Viking Link	1430	1430	Fully Available

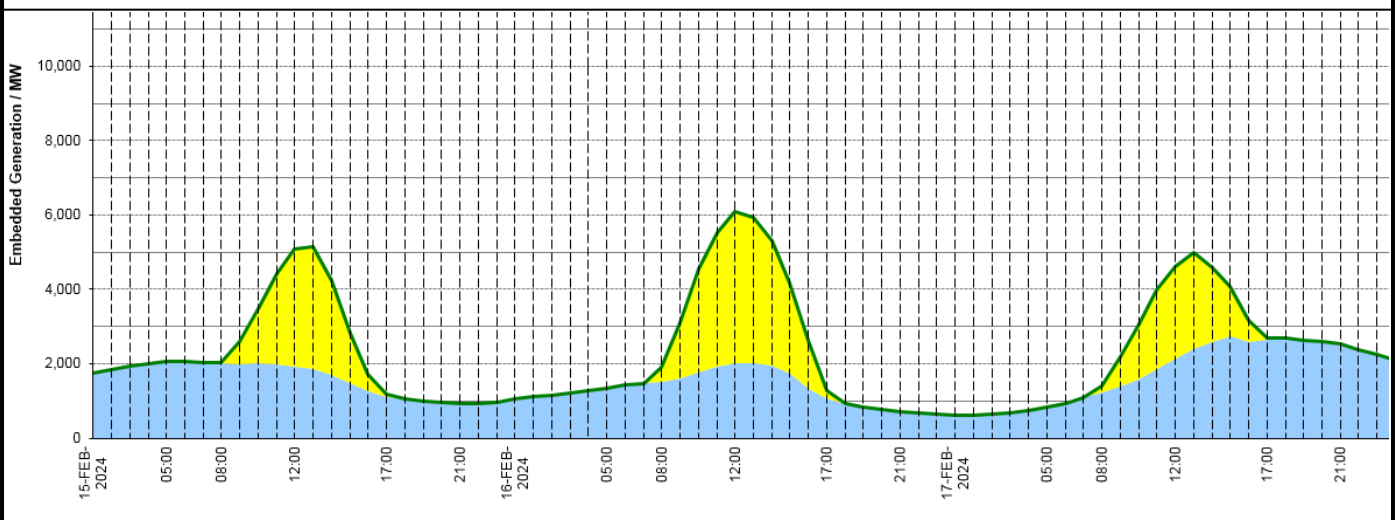
Wind Power Forecast



Expected embedded generation (MWs)

Embedded Generation Forecast

Embedded Generation Estimates																Last run: 16-Feb-2024 04:32:41	
	15-FEB-2024					16-FEB-2024					17-FEB-2024						
	05:00	08:00	12:00	17:00	21:00	00:00	05:00	08:00	12:00	17:00	21:00	00:00	05:00	08:00	12:00	17:00	21:00
Solar (MW)	0	35	3169	52	0	0	0	380	4070	224	0	0	0	163	2479	44	0
Wind (MW)	2065	2003	1928	1117	921	1053	1348	1516	2016	1068	721	613	850	1239	2144	2639	2525
STOR (MW)	0	0	0	0	0	0	0	0	0	0	0	0	0	0	0	0	0
Total (MW)	2065	2038	5097	1169	921	1053	1348	1896	6086	1292	721	613	850	1402	4623	2683	2525



Weather	Source	Commentary
Latest forecast (Summary)	Met Office SEPA Natural Resources Wales	Today: Rain to start in the southeast but clearing eastwards, otherwise brighter weather developing for many, but still fairly large amounts of cloud and a few well-scattered showers likely too. Tonight: Rain continuing to move eastwards overnight with variable cloud and scattered showers. A few fog patches forming in clear spells in the west and north, especially so for Northern Ireland. A mild if not very mild night for February.
General Weather Concerns e.g. wind, rain, snow, flooding, GB Weather Warnings	Met Office Weather Warnings SEPA Natural Resources Wales	UK Weather Warnings Yellow warning Rain 14:00 Thu 15 UTC 03:00 Today Regions and local authorities affected: East Midlands Leicester

Weather	Source	Commentary
		Leicestershire West Midlands Warwickshire Headline A further spell of rain is expected on Thursday afternoon and night.
		Flood Warnings 12 flood warnings and 130 flood alerts issued for England. 0 flood warnings and 3 flood alerts issued for Scotland. 0 flood warnings and 2 flood alerts issued for Wales

Contains public sector information licensed under the Open Government Licence v1.0

Further Information	
BM Reports	https://www.bmreports.com
System Balancing Reports	https://www.nationalgrideso.com/industry-information/industry-data-and-reports/system-balancing-reports
Forecast Volumes and Costs	https://www.nationalgrideso.com/industry-information/industry-data-and-reports/forecast-volumes-and-costs