

**National Electricity  
Transmission System Status Report**

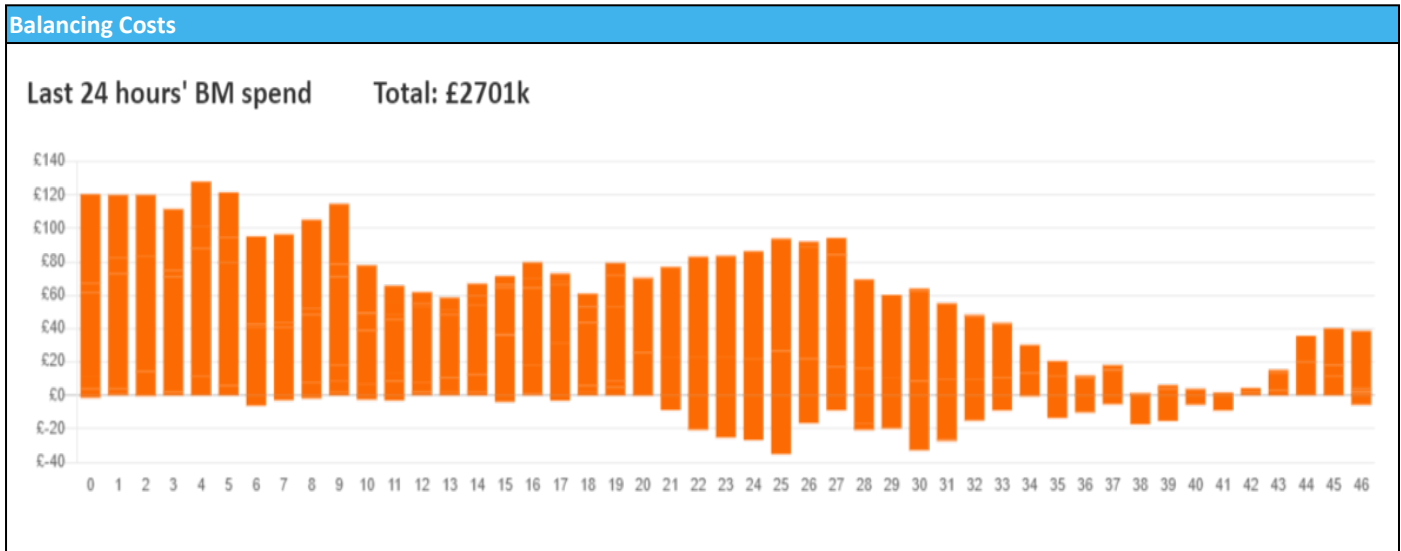


**nationalgrid**ESO

**National Electricity Transmission System Status Report**  
Wednesday 14 February 2024

Today's High Level Risk Status Forecast for the next 24h			
General Status		Voltage	
Demand		System Inertia	
System Margins		Weather	
Generation		Transmission	
Active Constraints			
<a href="#">System Warning</a>			

<a href="#">Today's Minimum De-Rated Margin</a>	10226.25 (SP 36)	
Current BMU Largest Loss Risk	Generation	1500 MW
	Demand	560 MW



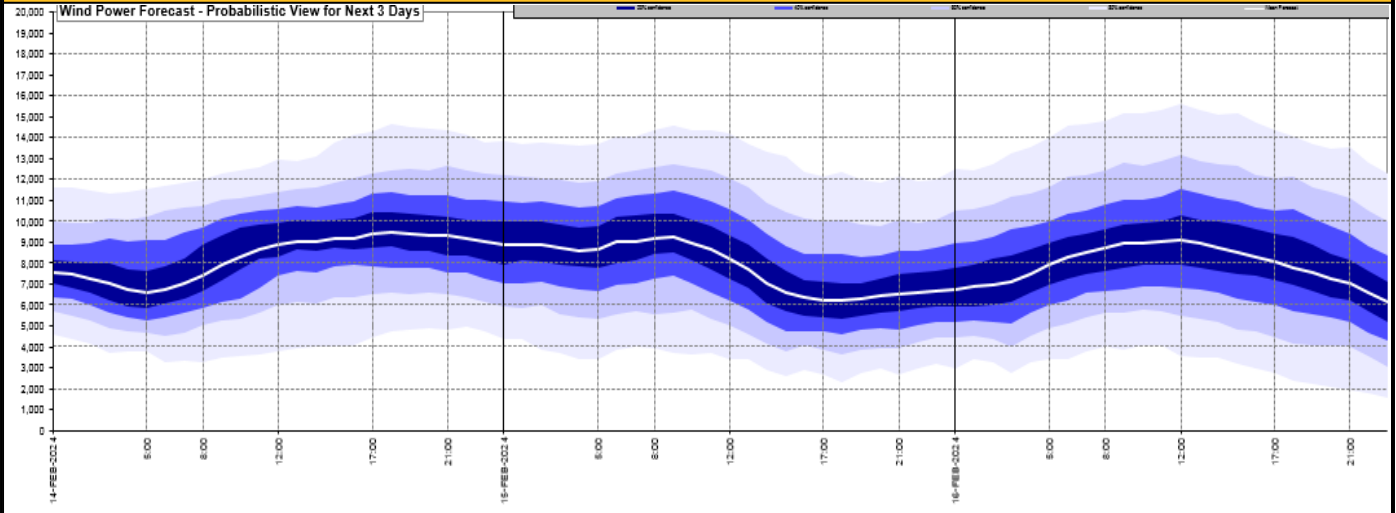
**Yesterday's Market Summary**

<a href="#">Cash Out Price (Max)</a>	£ 110 (SP 45)
<a href="#">Cash Out Price (Min)</a>	£ 35.65 (SP 30)
<a href="#">Peak Demand Yesterday</a>	41,070 MW
Minimum Demand	21,740 MW

**Interconnector Net Transfer Capacity (MWs)**

Today	Import	Export	Remarks
Netherlands (BritNed)	1000	1000	Fully Available
France (IFA)	2000	2000	Fully Available
Belgium (Nemo)	1000	1000	Fully Available
Ireland (EWIC)	500	500	Fully Available
France (ElecLink)	1000	1000	Fully Available
Northern Ireland (MOYLE)	500	500	Fully Available
Norway (NSL)	1400	1400	Fully Available
France (IFA2)	0	0	Unavailable
Viking Link	1430	1430	Fully Available

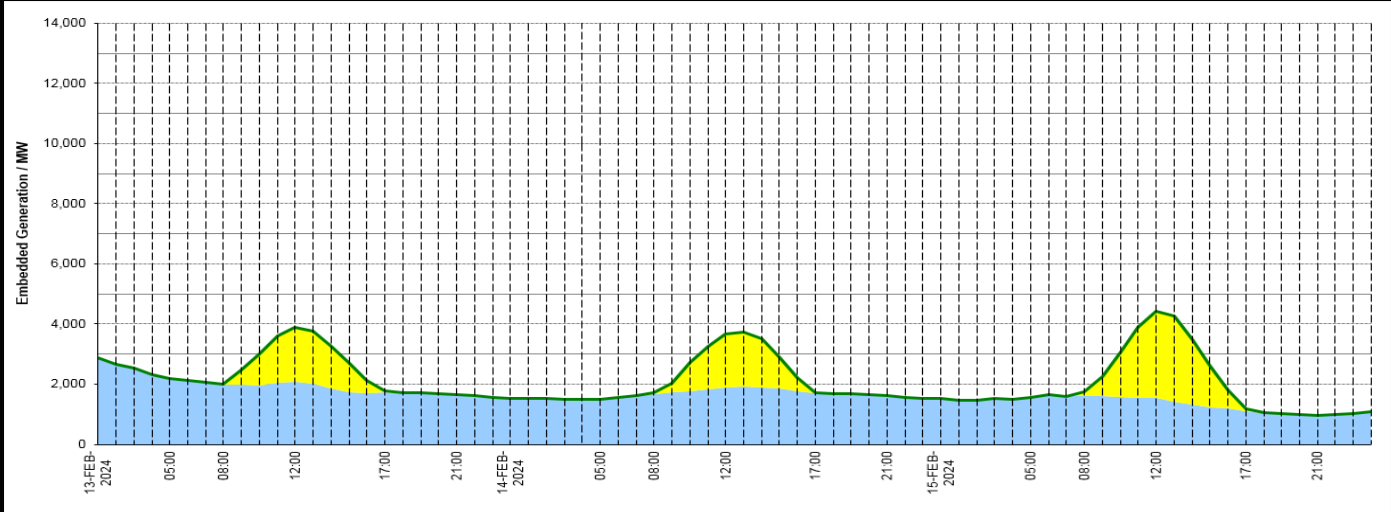
**Wind Power Forecast**



**Expected embedded generation (MWs)**

**Embedded Generation Forecast**

	13-FEB-2024					14-FEB-2024					15-FEB-2024						
	05:00	08:00	12:00	17:00	21:00	00:00	05:00	08:00	12:00	17:00	21:00	00:00	05:00	08:00	12:00	17:00	21:00
Solar (MW)	0	22	1805	46	0	0	0	48	1790	22	0	0	0	140	2875	62	0
Wind (MW)	2195	1990	2092	1730	1648	1532	1506	1673	1883	1708	1611	1514	1566	1601	1541	1119	972
STOR (MW)	0	0	0	0	0	0	0	0	0	0	0	0	0	0	0	0	0
<b>Total (MW)</b>	<b>2195</b>	<b>2012</b>	<b>3897</b>	<b>1776</b>	<b>1648</b>	<b>1532</b>	<b>1506</b>	<b>1721</b>	<b>3673</b>	<b>1730</b>	<b>1611</b>	<b>1514</b>	<b>1566</b>	<b>1741</b>	<b>4416</b>	<b>1181</b>	<b>972</b>



Weather	Source	Commentary
Latest forecast (Summary)	<a href="#">Met Office</a> <a href="#">SEPA</a> <a href="#">Natural Resources Wales</a>	<b>Today:</b> Cloud and rain will spread into southern Scotland with some hill snow, but mostly staying dry further north. Elsewhere, largely cloudy and very mild with outbreaks of rain and drizzle. Some brighter spells in eastern England. Mild. <b>Tonight:</b> Rain reaches north Scotland, with cloud and further rain elsewhere, heaviest towards western and southern areas. Remaining exceptionally mild for the time of year in England and Wales.
General Weather Concerns e.g. wind, rain, snow, flooding, GB Weather Warnings	<a href="#">Met Office</a> <a href="#">Weather Warnings</a> <a href="#">SEPA</a> <a href="#">Natural Resources Wales</a>	<b>UK Weather Warnings</b> No weather warnings are in force for the UK <b>Flood Warnings</b> 24 flood warnings and 156 flood alerts issued for England. 7 flood warnings and 14 flood alerts issued for Scotland. 0 flood warnings and 5 flood alerts issued for Wales

Contains public sector information licensed under the Open Government Licence v1.0

Further Information	
BM Reports	<a href="https://www.bmreports.com">https://www.bmreports.com</a>
System Balancing Reports	<a href="https://www.nationalgrideso.com/industry-information/industry-data-and-reports/system-balancing-reports">https://www.nationalgrideso.com/industry-information/industry-data-and-reports/system-balancing-reports</a>
Forecast Volumes and Costs	<a href="https://www.nationalgrideso.com/industry-information/industry-data-and-reports/forecast-volumes-and-costs">https://www.nationalgrideso.com/industry-information/industry-data-and-reports/forecast-volumes-and-costs</a>