

# National Electricity Transmission System Status Report

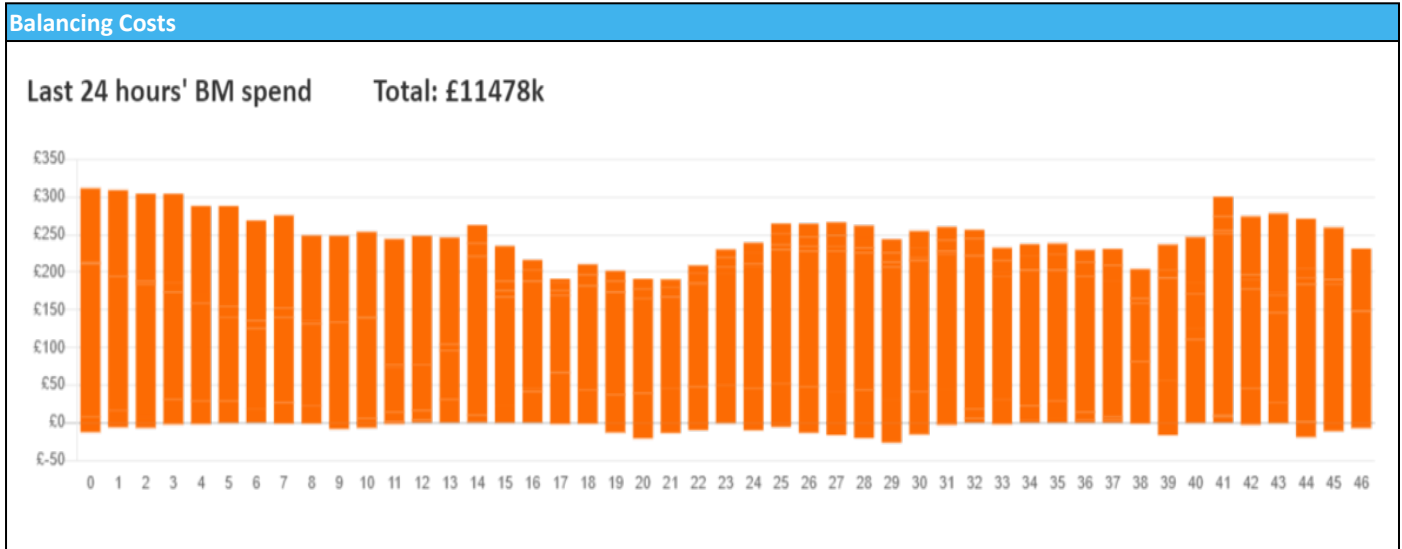


nationalgridESO

National Electricity Transmission System Status Report  
Sunday 04 February 2024

Today's High Level Risk Status Forecast for the next 24h			
General Status		Voltage	
Demand		System Inertia	
System Margins		Weather	
Generation		Transmission	
Active Constraints			
<a href="#">System Warning</a>			

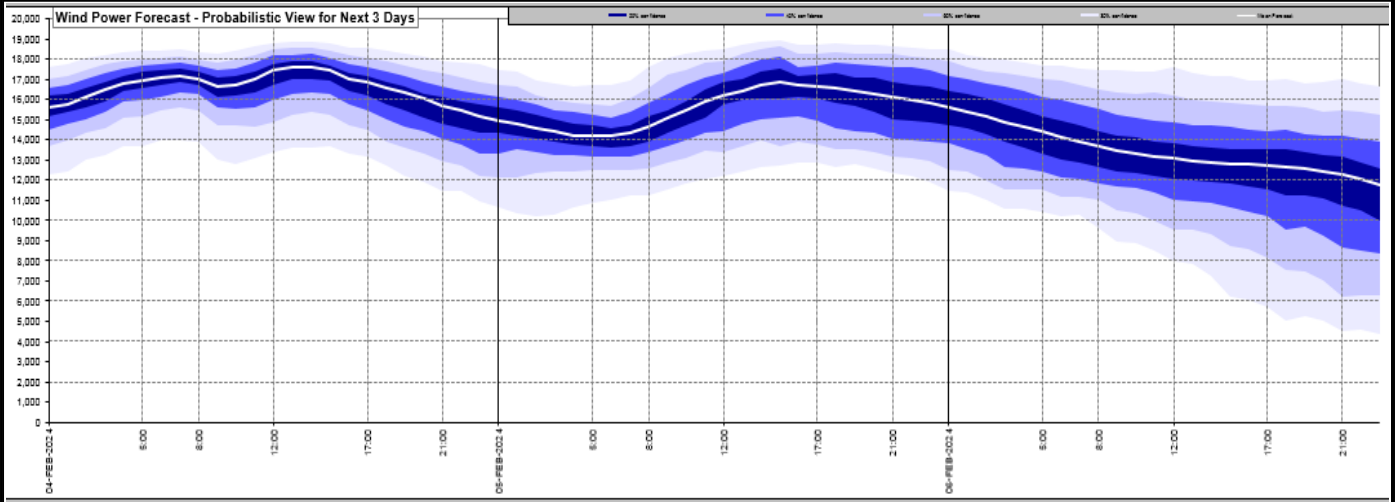
<a href="#">Today's Minimum De-Rated Margin</a>	17,821 (SP 37)	
Current BMU Largest Loss Risk	Generation	1400 MW
	Demand	560 MW



Yesterday's Market Summary	
<a href="#">Cash Out Price (Max)</a>	£ 87 (SP 34, 36, 37, 38, 39)
<a href="#">Cash Out Price (Min)</a>	£-39.73 (SP 1)
<a href="#">Peak Demand Yesterday</a>	35,582 MW
Minimum Demand	17,790 MW

Interconnector Net Transfer Capacity (MWs)			
Today	Import	Export	Remarks
Netherlands (BritNed)	508	508	Partially Available
France (IFA)	2000	2000	Fully Available
Belgium (Nemo)	1000	1000	Fully Available
Ireland (EWIC)	500	500	Fully Available
France (ElecLink)	1000	1000	Fully Available
Northern Ireland (MOYLE)	500	500	Fully Available
Norway (NSL)	1400	1400	Fully Available
France (IFA2)	0	0	Unavailable
Viking Link	1456	1456	Fully Available

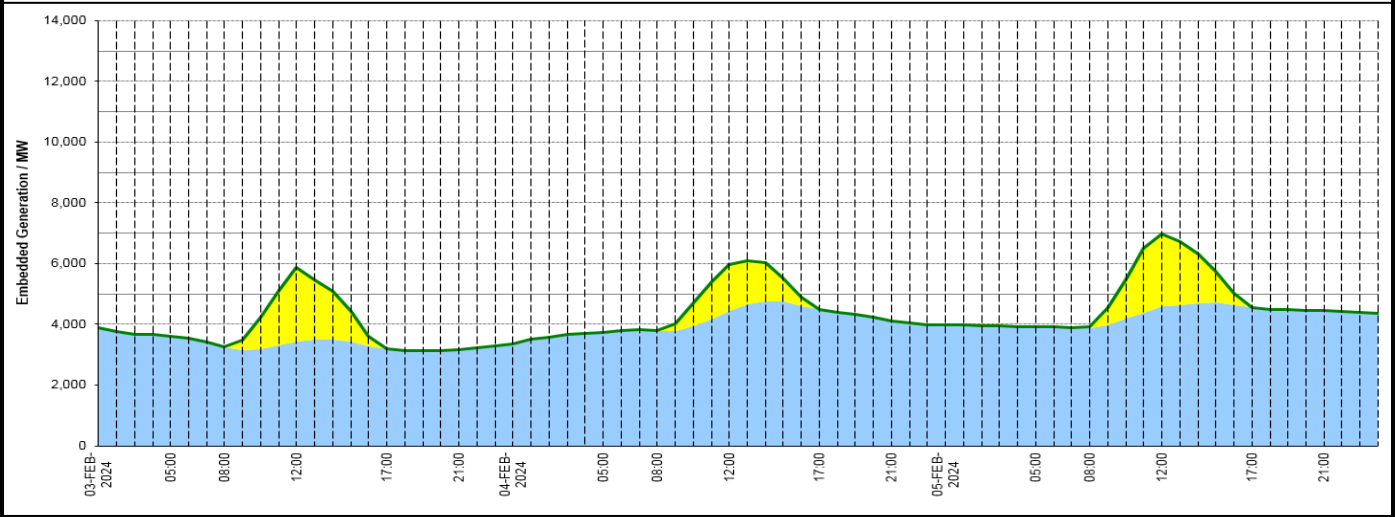
### Wind Power Forecast



### Expected embedded generation (MWs)

#### Embedded Generation Forecast

Embedded Generation Estimates														Last run: 04-Feb-2024 04:34:21			
	03-FEB-2024					04-FEB-2024					05-FEB-2024						
	05:00	08:00	12:00	17:00	21:00	00:00	05:00	08:00	12:00	17:00	21:00	00:00	05:00	08:00	12:00	17:00	21:00
Solar (MW)	0	0	2448	8	0	0	0	18	1509	0	0	0	0	49	2377	0	0
Wind (MW)	3591	3255	3432	3186	3181	3360	3738	3792	4447	4496	4116	3974	3910	3878	4589	4562	4441
STOR (MW)	0	0	0	0	0	0	0	0	0	0	0	0	0	0	0	0	0
<b>Total (MW)</b>	<b>3591</b>	<b>3255</b>	<b>5880</b>	<b>3194</b>	<b>3181</b>	<b>3360</b>	<b>3738</b>	<b>3810</b>	<b>5956</b>	<b>4496</b>	<b>4116</b>	<b>3974</b>	<b>3910</b>	<b>3927</b>	<b>6966</b>	<b>4562</b>	<b>4441</b>



Weather	Source	Commentary
Latest forecast (Summary)	<a href="#">Met Office</a> <a href="#">SEPA</a> <a href="#">Natural Resources Wales</a>	<b>Today:</b> Heavy rain affecting western Scotland. Lighter rain across Northern Ireland, northern England and the Welsh hills. Drier but cloudy further southeast with some sunny breaks in the east, whilst brighter and showery across northeast Scotland. Staying windy. Mild. <b>Tonight:</b> Staying cloudy in the south with some clear intervals and patchy drizzle in the west. Persistent rain continuing across western Scotland, turning heavier with snow possible later in the north
General Weather Concerns e.g. wind, rain, snow, flooding, GB Weather Warnings	<a href="#">Met Office</a> <a href="#">Weather Warnings</a> <a href="#">SEPA</a> <a href="#">Natural Resources Wales</a>	<b>UK Weather Warnings</b> Yellow warning Rain <b>Flood Warnings</b> 3 flood warnings and 36 flood alerts issued for England. 0 flood warnings and 0 flood alerts issued for Scotland. 0 flood warning and 0 flood alerts issued for Wales

Contains public sector information licensed under the Open Government Licence v1.0

Further Information	
BM Reports	<a href="https://www.bmreports.com">https://www.bmreports.com</a>
System Balancing Reports	<a href="https://www.nationalgrideso.com/industry-information/industry-data-and-reports/system-balancing-reports">https://www.nationalgrideso.com/industry-information/industry-data-and-reports/system-balancing-reports</a>
Forecast Volumes and Costs	<a href="https://www.nationalgrideso.com/industry-information/industry-data-and-reports/forecast-volumes-and-costs">https://www.nationalgrideso.com/industry-information/industry-data-and-reports/forecast-volumes-and-costs</a>