

**National Electricity  
Transmission System Status Report**

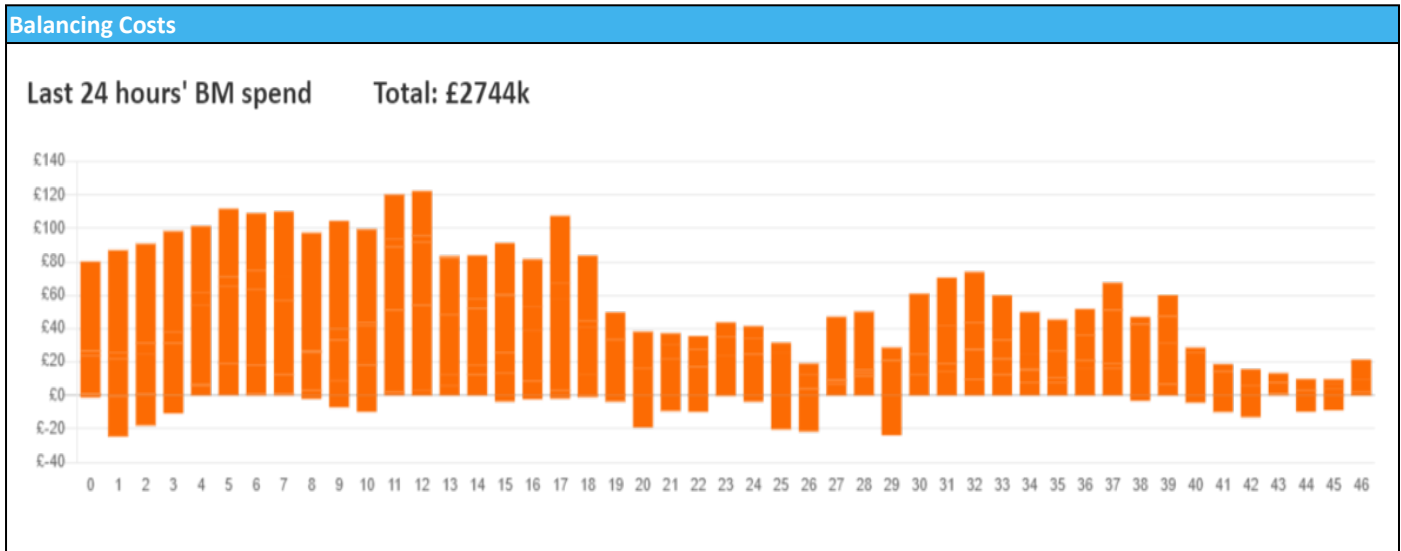


national**grid**ESO

**National Electricity Transmission System Status Report**  
Tuesday 16 January 2024

Today's High Level Risk Status Forecast for the next 24h			
General Status		Voltage	
Demand		System Inertia	
System Margins		Weather	
Generation		Transmission	
Active Constraints			
<a href="#">System Warning</a>			

<a href="#">Today's Minimum De-Rated Margin</a>	8,588 (SP 18)	
Current BMU Largest Loss Risk	Generation	1400 MW
	Demand	560 MW



**Yesterday's Market Summary**

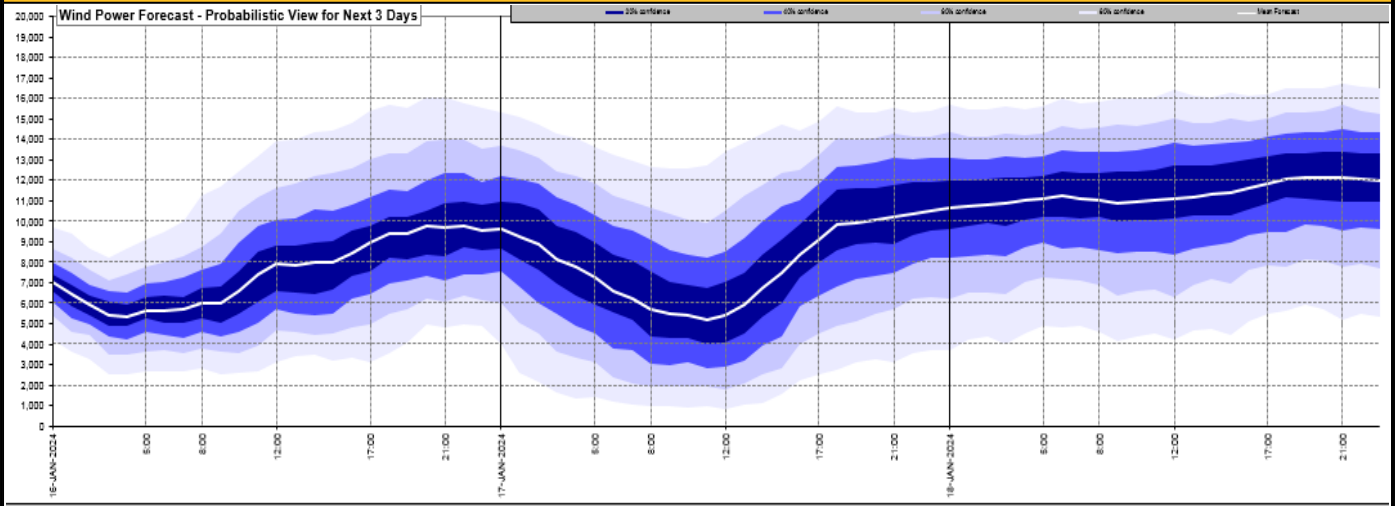
<a href="#">Cash Out Price (Max)</a>	£125.00 (SP 34, 36, 37, 41)
<a href="#">Cash Out Price (Min)</a>	£40.00 (SP 10, 12)
<a href="#">Peak Demand Yesterday</a>	46,876 MW
Minimum Demand	23,443 MW

**Interconnector**

**Net Transfer Capacity (MWs)**

Today	Import	Export	Remarks
Netherlands (BritNed)	1000	1000	Fully Available
France (IFA)	2000	2000	Fully Available
Belgium (Nemo)	1000	1000	Fully Available
Ireland (EWIC)	500	500	Fully Available
France (ElecLink)	1000	1000	Fully Available
Northern Ireland (MOYLE)	500	500	Fully Available
Norway (NSL)	1400	1400	Fully Available
France (IFA2)	0	0	Unavailable
Viking Link	1400	800	Restricted

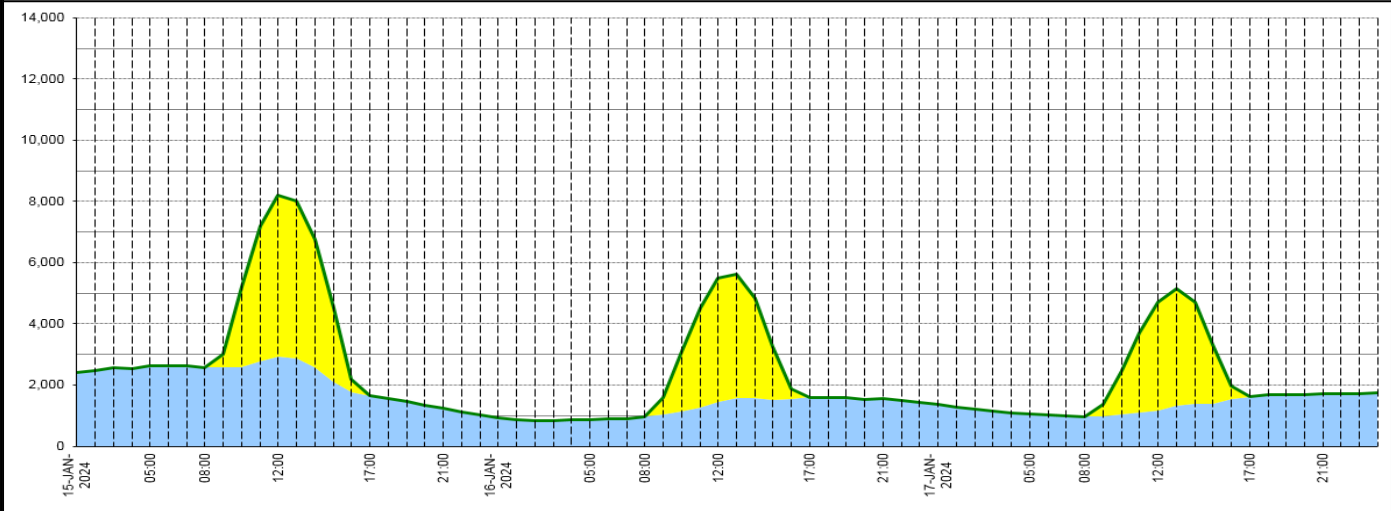
**Wind Power Forecast**



**Expected embedded generation (MWs)**

**Embedded Generation Forecast**

	15-JAN-2024					16-JAN-2024					17-JAN-2024						
	05:00	08:00	12:00	17:00	21:00	00:00	05:00	08:00	12:00	17:00	21:00	00:00	05:00	08:00	12:00	17:00	21:00
Solar (MW)	0	0	5273	0	0	0	0	0	4051	0	0	0	0	0	3529	0	0
Wind (MW)	2620	2576	2923	1651	1237	931	882	969	1446	1600	1547	1383	1058	968	1170	1620	1706
STOR (MW)	0	0	0	0	0	0	0	0	0	0	0	0	0	0	0	0	0
<b>Total (MW)</b>	<b>2620</b>	<b>2576</b>	<b>8196</b>	<b>1651</b>	<b>1237</b>	<b>931</b>	<b>882</b>	<b>969</b>	<b>5497</b>	<b>1600</b>	<b>1547</b>	<b>1383</b>	<b>1058</b>	<b>968</b>	<b>4699</b>	<b>1620</b>	<b>1706</b>



Weather	Source	Commentary
Latest forecast (Summary)	<a href="#">Met Office</a> <a href="#">SEPA</a> <a href="#">Natural Resources Wales</a>	<p><b>Today:</b> Outbreaks of sleet and snow will move across northern areas, with some heavy snow possible for a time, especially across parts of Scotland. Dry elsewhere with sunny spells, but for all areas it will be another very cold day.</p> <p><b>Tonight:</b> Frequent snow showers continuing in northern Scotland and Northern Ireland. Otherwise sleet and snow clearing northern areas leading to an ice risk. Clear skies elsewhere with a widespread severe frost.</p>
General Weather Concerns e.g. wind, rain, snow, flooding, GB Weather Warnings	<a href="#">Met Office</a> <a href="#">Weather Warnings</a> <a href="#">SEPA</a> <a href="#">Natural Resources Wales</a>	<p><b>UK Weather Warnings</b> Yellow warning of snow and ice Areas affected: Northern Ireland</p> <p>ACTIVEStarted at: 03:00 GMT on Mon 15 JanuaryEnds: 11:00 GMT on Tue 16 January Snow showers bringing some disruption to parts of Northern Ireland.</p> <ul style="list-style-type: none"> <li>- Some roads and railways likely to be affected with longer journey times by road, bus and train services</li> <li>- Some injuries from slips and falls on icy surfaces</li> <li>- Probably some icy patches on some untreated roads, pavements and cycle paths</li> </ul>

Weather	Source	Commentary
		<p>Issued at: 10:07 GMT on Fri 12 January Last updated: 18 hours ago</p> <p>Yellow warning of snow and ice Areas affected: Central, Tayside &amp; Fife   East Midlands   Grampian   Highlands &amp; Eilean Siar   North East England   North West England   Orkney &amp; Shetland   SW Scotland, Lothian Borders   Strathclyde   Wales   West Midlands   Yorkshire &amp; Humber</p> <p>ACTIVE Started at: 00:00 GMT on Tue 16 January Ends: 23:59 GMT on Tue 16 January Further snow showers, perhaps merging into a longer spell of snow, are likely to cause further disruption on Tuesday</p> <ul style="list-style-type: none"> <li>- Possible travel delays on roads stranding some vehicles and passengers</li> <li>- Possible delays or cancellations to rail and air travel</li> <li>- Some rural communities could become cut off</li> <li>- A chance of injuries from slips and falls on icy surfaces</li> <li>- Power cuts may occur, with the potential to affect other services, such as mobile phone coverage</li> </ul>
		<p>Issued at: 09:53 GMT on Sun 14 January Yellow warning of snow and ice Areas affected: Central, Tayside &amp; Fife   Grampian   Highlands &amp; Eilean Siar   Northern Ireland   Orkney &amp; Shetland   Strathclyde</p> <p>Starts: 00:00 GMT on Wed 17 January Ends: 23:59 GMT on Wed 17 January Frequent heavy snow showers will continue to push inland, likely disrupting travel across the region.</p> <ul style="list-style-type: none"> <li>- Possible travel delays on roads stranding some vehicles and passengers</li> <li>- Possible delays or cancellations to rail and air travel</li> <li>- Some rural communities could become cut off</li> <li>- A chance of injuries from slips and falls on icy surfaces</li> <li>- Untreated pavements and cycle paths might be impassable</li> </ul>
		<p>Issued at: 12:06 GMT on Mon 15 January Yellow warning of snow and ice Areas affected: East Midlands   North East England   North West England   SW Scotland, Lothian Borders   Wales   West Midlands   Yorkshire &amp; Humber</p> <p>Starts: 00:00 GMT on Wed 17 January Ends: 12:00 GMT on Wed 17 January A mixture of sleet, snow and ice could cause travel disruption.</p> <ul style="list-style-type: none"> <li>- There is a small chance of travel delays on roads with some stranded vehicles and passengers, along with delayed or cancelled rail and air travel</li> <li>- A small chance of injuries from slips and falls on icy surfaces</li> <li>- A small chance that untreated pavements and cycle paths become impassable</li> </ul>
		<p>Issued at: 12:09 GMT on Mon 15 January Yellow warning of ice Areas affected: Central, Tayside &amp; Fife   SW Scotland, Lothian Borders   Strathclyde</p> <p>Starts: 00:00 GMT on Wed 17 January Ends: 12:00 GMT on Wed 17 January Following sleet and snowfall on Tuesday, a fairly widespread ice risk is expected overnight into Wednesday morning.</p> <ul style="list-style-type: none"> <li>- Some injuries from slips and falls on icy surfaces</li> <li>- Icy patches on some untreated roads, pavements and cycle paths</li> </ul>
		<p>Issued at: 12:07 GMT on Mon 15 January Yellow warning of snow and ice Areas affected: East Midlands   North West England   SW Scotland, Lothian Borders   Wales   West Midlands   Yorkshire &amp; Humber</p>

Weather	Source	Commentary
		<p>Starts: 00:00 GMT on Thu 18 January Ends: 23:59 GMT on Thu 18 January Snow showers across parts of west Wales initially, will increasingly affect northwest England later. Some travel disruption is likely.</p> <ul style="list-style-type: none"> <li>- There is a small chance of travel delays on roads with some stranded vehicles and passengers, along with delayed or cancelled rail and air travel</li> <li>- A small chance of injuries from slips and falls on icy surfaces</li> <li>- A small chance that untreated pavements and cycle paths become impassable</li> </ul> <p>Issued at: 12:19 GMT on Mon 15 January Yellow warning of snow and ice Areas affected: Central, Tayside &amp; Fife   Grampian   Highlands &amp; Eilean Siar   Northern Ireland   Orkney &amp; Shetland   SW Scotland, Lothian Borders   Strathclyde</p> <p>Starts: 00:00 GMT on Thu 18 January Ends: 23:59 GMT on Thu 18 January Further snow showers and some ice are likely to continue to bring disruption to travel.</p> <ul style="list-style-type: none"> <li>- Possible travel delays on roads stranding some vehicles and passengers</li> <li>- Possible delays or cancellations to rail and air travel</li> <li>- Some rural communities could become cut off</li> <li>- A chance of injuries from slips and falls on icy surfaces</li> <li>- Untreated pavements and cycle paths might be impassable</li> </ul> <p>Issued at: 12:19 GMT on Mon 15 January</p> <p><b>Flood Warnings</b> 25 flood warnings and 88 flood alerts issued for England.</p> <p>0 flood warnings and 0 flood alerts issued for Scotland.</p> <p>0 flood warning and 2 flood alerts issued for Wales</p>

*Contains public sector information licensed under the Open Government Licence v1.0*

Further Information	
BM Reports	<a href="https://www.bmreports.com">https://www.bmreports.com</a>
System Balancing Reports	<a href="https://www.nationalgrideso.com/industry-information/industry-data-and-reports/system-balancing-reports">https://www.nationalgrideso.com/industry-information/industry-data-and-reports/system-balancing-reports</a>
Forecast Volumes and Costs	<a href="https://www.nationalgrideso.com/industry-information/industry-data-and-reports/forecast-volumes-and-costs">https://www.nationalgrideso.com/industry-information/industry-data-and-reports/forecast-volumes-and-costs</a>