

**National Electricity
Transmission System Status Report**

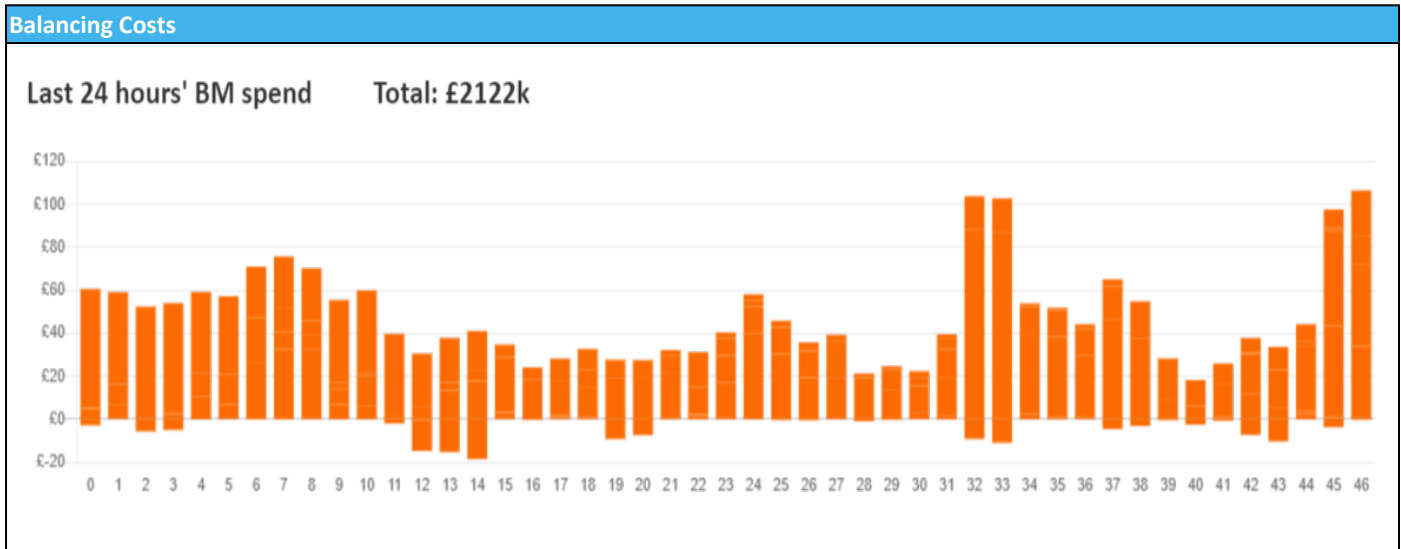


national**grid**ESO

National Electricity Transmission System Status Report
Monday 15 January 2024

Today's High Level Risk Status Forecast for the next 24h			
General Status		Voltage	
Demand		System Inertia	
System Margins		Weather	
Generation		Transmission	
Active Constraints			
System Warning			

Today's Minimum De-Rated Margin	8,603 (SP 37)	
Current BMU Largest Loss Risk	Generation	1400 MW
	Demand	560 MW



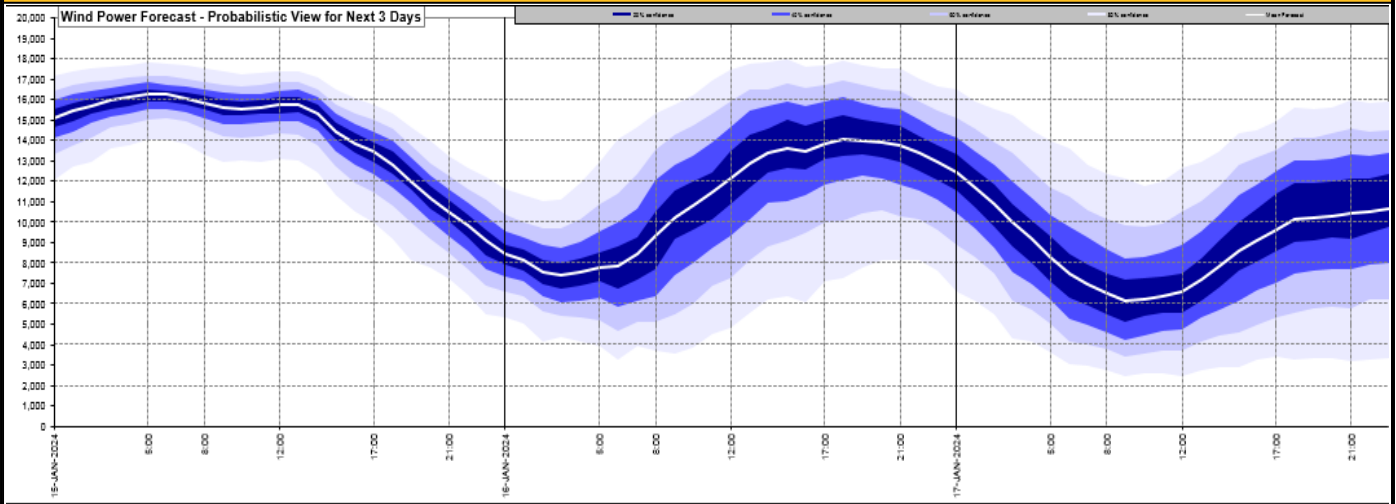
Yesterday's Market Summary

Cash Out Price (Max)	£150.00 (SP 47)
Cash Out Price (Min)	£55.05 (SP 42)
Peak Demand Yesterday	42,290 MW
Minimum Demand	22,912 MW

Interconnector Net Transfer Capacity (MWs)

Today	Import	Export	Remarks
Netherlands (BritNed)	1000	1000	Fully Available
France (IFA)	2000	2000	Fully Available
Belgium (Nemo)	1000	1000	Fully Available
Ireland (EWIC)	500	500	Fully Available
France (ElecLink)	1000	1000	Fully Available
Northern Ireland (MOYLE)	500	500	Fully Available
Norway (NSL)	1400	1400	Fully Available
France (IFA2)	0	0	Unavailable
Viking Link	1400	800	Restricted

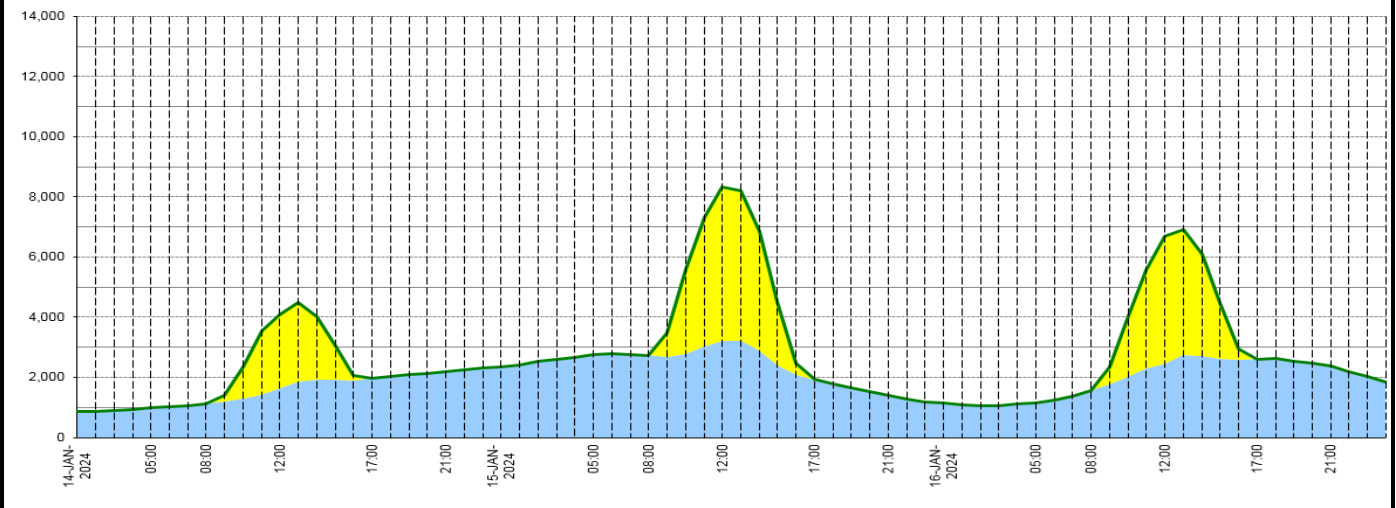
Wind Power Forecast



Expected embedded generation (MWs)

Embedded Generation Forecast

	14-JAN-2024					15-JAN-2024					16-JAN-2024						
	05:00	08:00	12:00	17:00	21:00	00:00	05:00	08:00	12:00	17:00	21:00	00:00	05:00	08:00	12:00	17:00	21:00
Solar (MW)	0	0	2460	0	0	0	0	0	5119	0	0	0	0	0	4234	0	0
Wind (MW)	979	1130	1624	1977	2201	2335	2770	2730	3217	1923	1401	1136	1166	1562	2469	2601	2376
STOR (MW)	0	0	0	0	0	0	0	0	0	0	0	0	0	0	0	0	0
Total (MW)	979	1130	4084	1977	2201	2335	2770	2730	8336	1923	1401	1136	1166	1562	6703	2601	2376



Weather	Source	Commentary
Latest forecast (Summary)	Met Office SEPA Natural Resources Wales	<p>Today: Plenty of winter sunshine on offer with scattered snow showers around windward coasts, these mostly falling as snow across Northern Ireland and Scotland. Feeling cold with brisk winds in the north and along eastern coasts bringing significant wind chill.</p> <p>Tonight: Temperatures dropping quickly after sunset, leading to a widespread and in places a severe frost. Mostly dry with clear skies for many, but snow showers continue in the north.</p>
General Weather Concerns e.g. wind, rain, snow, flooding, GB Weather Warnings	Met Office Weather Warnings SEPA Natural Resources Wales	<p>UK Weather Warnings Yellow warning of snow and ice Areas affected: Grampian Highlands & Eilean Siar Orkney & Shetland ACTIVE Started at: 00:00 GMT on Mon 15 January Ends: 23:59 GMT on Mon 15 January Frequent snow showers are likely to cause further disruption to travel on Monday - Some roads and railways affected with longer journey times by road, bus and train services - There is a slight chance of snow-covered roads leading to stranded vehicles and passengers, along with delayed or cancelled rail and air travel - Some injuries from slips and falls on icy surfaces - Icy patches on some untreated roads, pavements and cycle paths - There is a small chance that power cuts will occur and other services, such as mobile</p>

Weather	Source	Commentary
		<p>phone coverage, may be affected</p> <p>Yellow warning of snow and ice Areas affected: Northern Ireland ACTIVE Started at: 03:00 GMT on Mon 15 January Ends: 09:00 GMT on Tue 16 January Showers, increasingly falling as snow, bringing some disruption to parts of Northern Ireland</p> <ul style="list-style-type: none"> - Some roads and railways likely to be affected with longer journey times by road, bus and train services - Some injuries from slips and falls on icy surfaces - Probably some icy patches on some untreated roads, pavements and cycle paths
		<p>Yellow warning of snow and ice Areas affected: East of England Starts: 07:00 GMT on Mon 15 January Ends: 23:59 GMT on Mon 15 January Snow showers and then ice leading to some disruption to travel during Monday.</p> <ul style="list-style-type: none"> - Some roads and railways likely to be affected with longer journey times by road, bus and train services - Some injuries from slips and falls on icy surfaces - Probably some icy patches on some untreated roads, pavements and cycle paths
		<p>Yellow warning of snow and ice Areas affected: Central, Tayside & Fife East Midlands Grampian Highlands & Eilean Siar North East England North West England Orkney & Shetland SW Scotland, Lothian Borders Strathclyde Wales West Midlands Yorkshire & Humber Starts: 00:00 GMT on Tue 16 January Ends: 23:59 GMT on Tue 16 January Further snow showers, perhaps merging into a longer spell of snow, are likely to cause further disruption on Tuesday</p> <ul style="list-style-type: none"> - Possible travel delays on roads stranding some vehicles and passengers - Possible delays or cancellations to rail and air travel - Some rural communities could become cut off - A chance of injuries from slips and falls on icy surfaces - Power cuts may occur, with the potential to affect other services, such as mobile phone coverage
		<p>Yellow warning of snow Areas affected: East Midlands Grampian Highlands & Eilean Siar North West England Northern Ireland Orkney & Shetland SW Scotland, Lothian Borders Strathclyde Wales West Midlands Yorkshire & Humber Starts: 00:00 GMT on Wed 17 January Ends: 23:59 GMT on Thu 18 January Frequent snow showers are likely to cause further disruption to travel during Wednesday and Thursday.</p> <ul style="list-style-type: none"> - Some roads and railways affected with longer journey times by road, bus and train services - There is a slight chance of snow-covered roads leading to stranded vehicles and passengers, along with delayed or cancelled rail and air travel - There is a slight chance that some rural communities could become cut off - There is a small chance that power cuts will occur and other services, such as mobile phone coverage, may be affected
		<p>Flood Warnings</p> <p>28 flood warnings and 119 flood alerts issued for England.</p> <p>2 flood warnings and 0 flood alerts issued for Scotland.</p> <p>0 flood warning and 2 flood alerts issued for Wales</p>

Contains public sector information licensed under the Open Government Licence v1.0

Further Information	
BM Reports	https://www.bmreports.com

Further Information	
System Balancing Reports	https://www.nationalgrideso.com/industry-information/industry-data-and-reports/system-balancing-reports
Forecast Volumes and Costs	https://www.nationalgrideso.com/industry-information/industry-data-and-reports/forecast-volumes-and-costs