

# National Electricity Transmission System Status Report

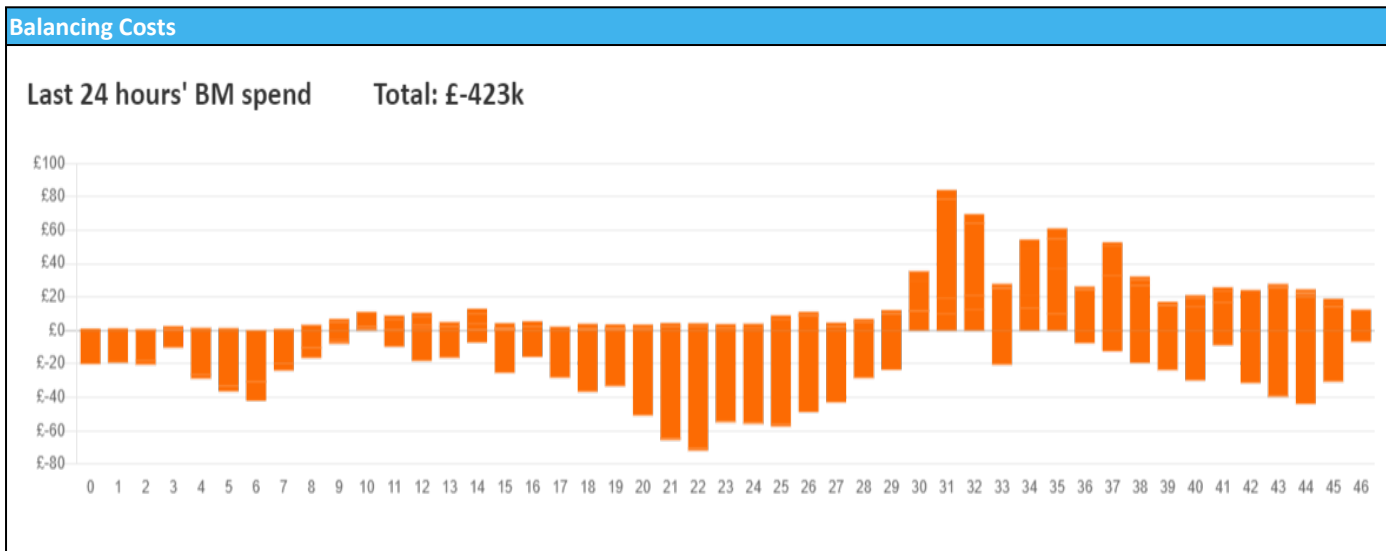


nationalgridESO

**National Electricity Transmission System Status Report**  
Wednesday 10 January 2024

Today's High Level Risk Status Forecast for the next 24h			
General Status		Voltage	
Demand		System Inertia	
System Margins		Weather	
Generation		Transmission	
Active Constraints			
<a href="#">System Warning</a>			

<a href="#">Today's Minimum De-Rated Margin</a>	3887.10 (SP 35)	
Current BMU Largest Loss Risk	Generation	1400 MW
	Demand	560 MW



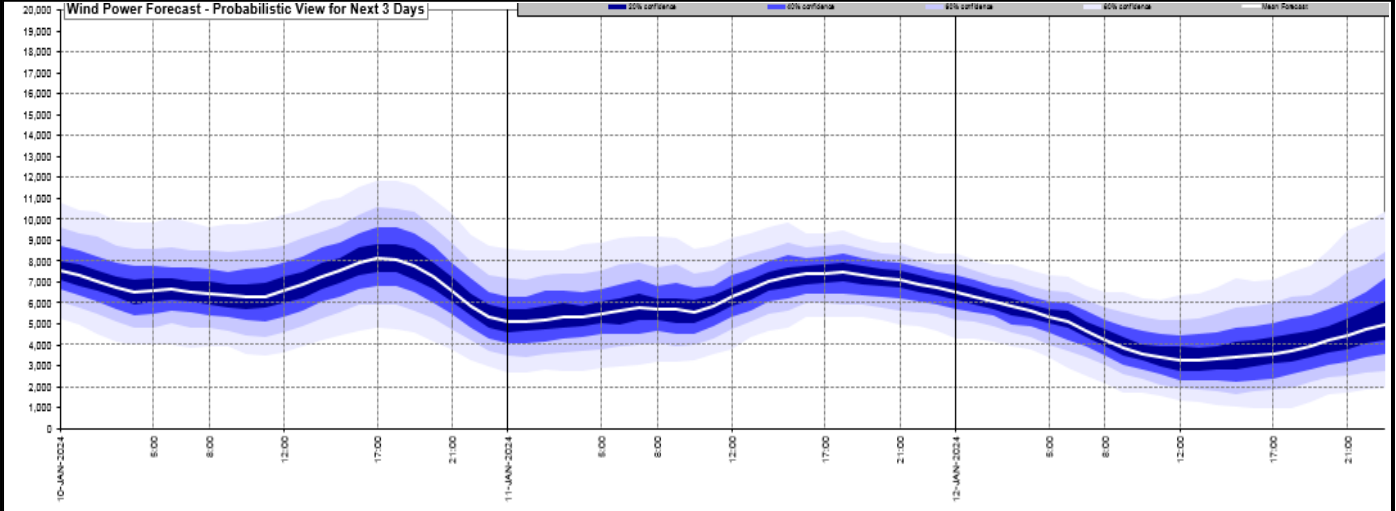
**Yesterday's Market Summary**

<a href="#">Cash Out Price (Max)</a>	£119.74 (SP 37)
<a href="#">Cash Out Price (Min)</a>	£35 (SP 10)
<a href="#">Peak Demand Yesterday</a>	46,771 MW
Minimum Demand	24,272 MW

**Interconnector Net Transfer Capacity (MWs)**

Today	Import	Export	Remarks
Netherlands (BritNed)	1000	1000	Fully Available
France (IFA)	2000	2000	Fully Available
Belgium (Nemo)	1000	1025	Fully Available
Ireland (EWIC)	500	530	Fully Available
France (ElecLink)	1000	1000	Fully Available
Northern Ireland (MOYLE)	500	500	Fully Available
Norway (NSL)	1424	1424	Fully Available
France (IFA2)	0	0	Unavailable
Viking Link	800	800	Partially Available

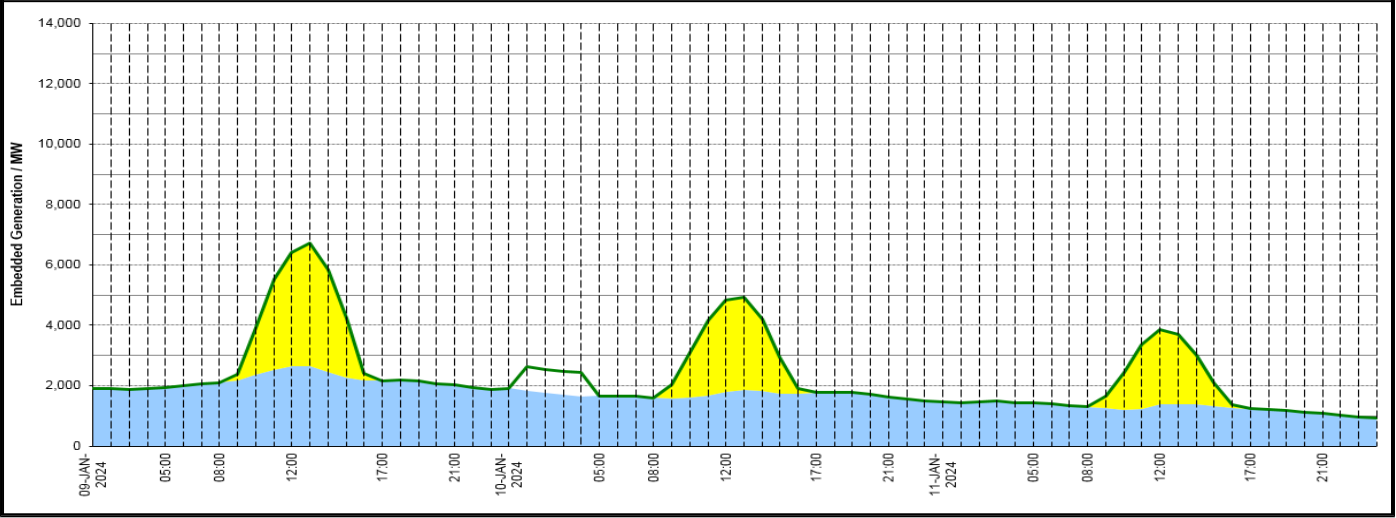
**Wind Power Forecast**



**Expected embedded generation (MWs)**

**Embedded Generation Forecast**

	09-JAN-2024					10-JAN-2024					11-JAN-2024						
	05:00	08:00	12:00	17:00	21:00	00:00	05:00	08:00	12:00	17:00	21:00	00:00	05:00	08:00	12:00	17:00	21:00
Solar (MW)	0	0	3761	0	0	0	0	0	3034	0	0	0	0	0	2476	0	0
Wind (MW)	1937	2109	2649	2171	2022	1915	1656	1605	1792	1771	1638	1452	1422	1295	1374	1244	1073
STOR (MW)	0	0	0	0	0	0	0	0	0	0	0	0	0	0	0	0	0
<b>Total (MW)</b>	<b>1937</b>	<b>2109</b>	<b>6410</b>	<b>2171</b>	<b>2022</b>	<b>1915</b>	<b>1656</b>	<b>1605</b>	<b>4826</b>	<b>1771</b>	<b>1638</b>	<b>1452</b>	<b>1422</b>	<b>1295</b>	<b>3850</b>	<b>1244</b>	<b>1073</b>



Weather	Source	Commentary
Latest forecast (Summary)	<a href="#">Met Office</a> <a href="#">SEPA</a> <a href="#">Natural Resources Wales</a>	<b>Today:</b> Dry across most southern and some western areas with plenty of sunshine, though a cold breeze still blowing. Northern England, central and northern Wales, along with central and eastern Scotland and Northern Ireland, will be cloudier with patchy drizzle. <b>Tonight:</b> Largely dry with clear periods and a frost across southern England, parts of south Wales and the west of Scotland. Cloudier skies elsewhere giving the odd spot of drizzle.
General Weather Concerns e.g. wind, rain, snow, flooding, GB Weather Warnings	<a href="#">Met Office</a> <a href="#">Weather Warnings</a> <a href="#">SEPA</a> <a href="#">Natural Resources Wales</a>	<b>UK Weather Warnings</b> No weather warnings are in force for the UK <b>Flood Warnings</b> 110 flood warnings and 119 flood alerts issued for England. 0 flood warnings and 0 flood alerts issued for Scotland. 0 flood warning and 2 flood alerts issued for Wales

Contains public sector information licensed under the Open Government Licence v1.0

Further Information	
BM Reports	<a href="https://www.bmreports.com">https://www.bmreports.com</a>
System Balancing Reports	<a href="https://www.nationalgrideso.com/industry-information/industry-data-and-reports/system-balancing-reports">https://www.nationalgrideso.com/industry-information/industry-data-and-reports/system-balancing-reports</a>
Forecast Volumes and Costs	<a href="https://www.nationalgrideso.com/industry-information/industry-data-and-reports/forecast-volumes-and-costs">https://www.nationalgrideso.com/industry-information/industry-data-and-reports/forecast-volumes-and-costs</a>