

National Electricity Transmission System Status Report

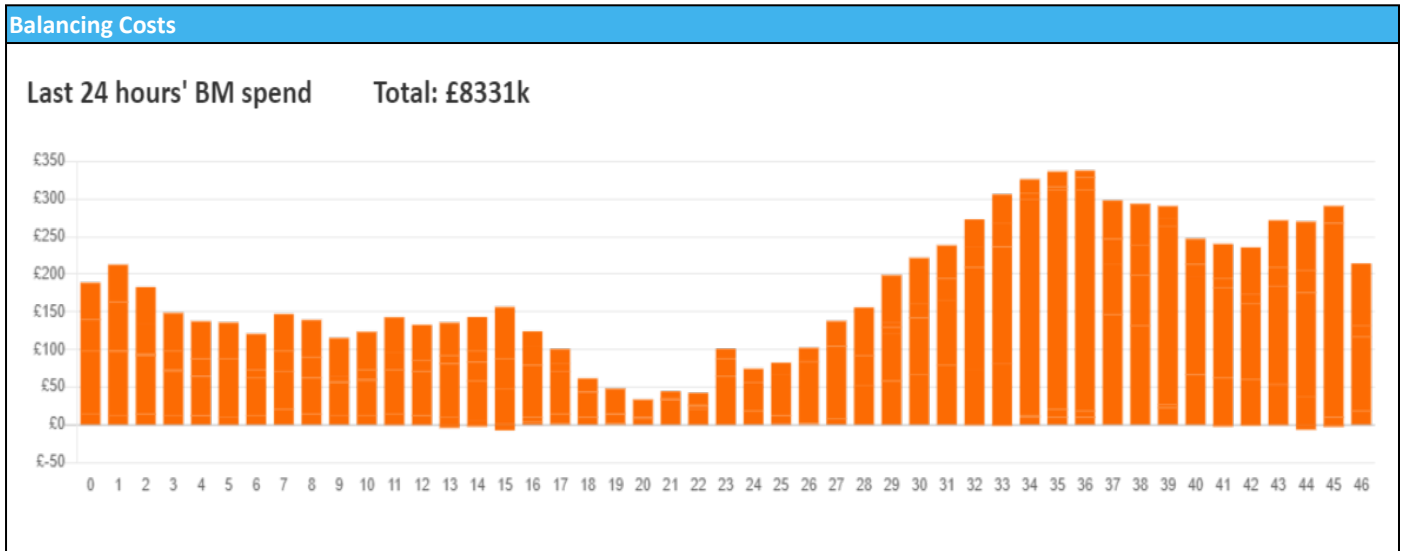


nationalgridESO

National Electricity Transmission System Status Report
Sunday 24 December 2023

Today's High Level Risk Status Forecast for the next 24h			
General Status		Voltage	
Demand		System Inertia	
System Margins		Weather	
Generation		Transmission	
Active Constraints			
System Warning			

Today's Minimum De-Rated Margin	23,757 (SP 35)	
Current BMU Largest Loss Risk	Generation	1400 MW
	Demand	560 MW



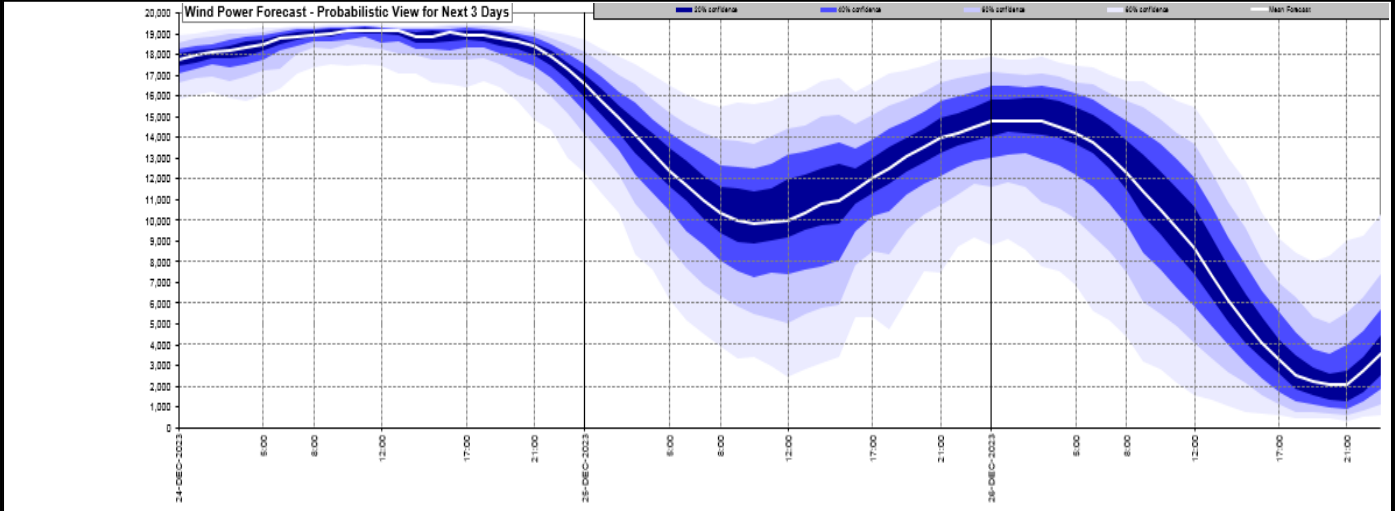
Yesterday's Market Summary

Cash Out Price (Max)	£103.50 (SP 23, 25)
Cash Out Price (Min)	£-29.56 (SP 39,40)
Peak Demand Yesterday	32,394 MW
Minimum Demand	17,023 MW

Interconnector
Net Transfer Capacity (MWs)

Today	Import	Export	Remarks
Netherlands (BritNed)	1000	1000	Fully Available
France (IFA)	2000	2000	Fully Available
Belgium (Nemo)	1000	1025	Fully Available
Ireland (EWIC)	500	530	Fully Available
France (ElecLink)	1000	1000	Fully Available
Northern Ireland (MOYLE)	500	500	Fully Available
Norway (NSL)	1424	1424	Fully Available
France (IFA2)	0	0	Unavailable
Viking Link	0	0	Not yet commissioned

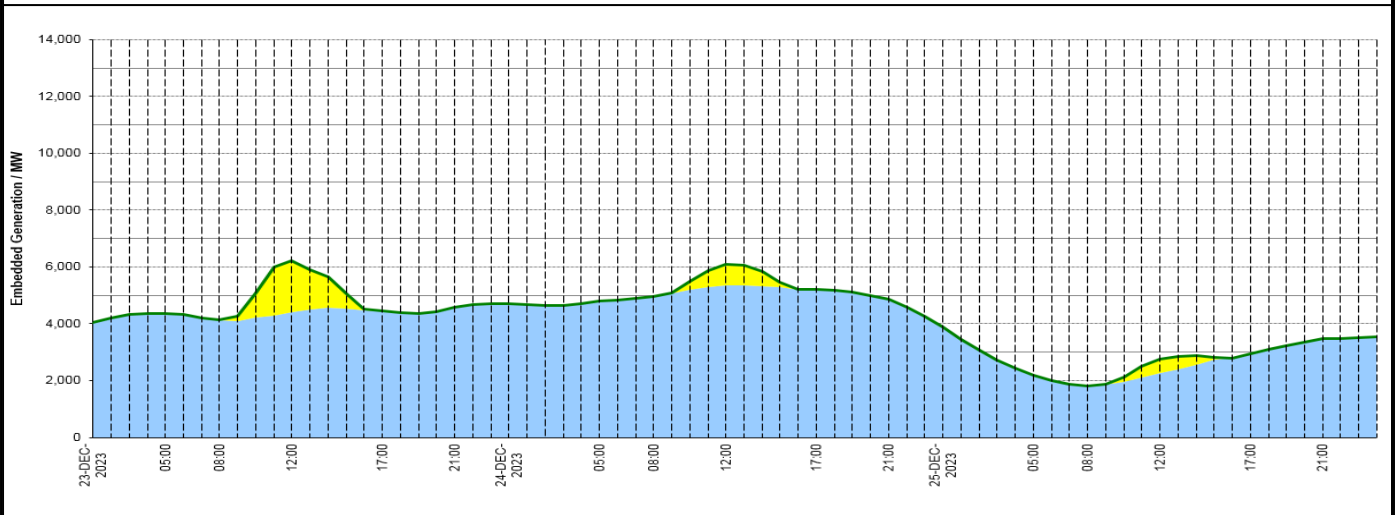
Wind Power Forecast



Expected embedded generation (MWs)

Embedded Generation Forecast

Embedded Generation Estimates															Last run: 24-Dec-2023 02:33:51		
	23-DEC-2023					24-DEC-2023					25-DEC-2023						
	05:00	08:00	12:00	17:00	21:00	00:00	05:00	08:00	12:00	17:00	21:00	00:00	05:00	08:00	12:00	17:00	21:00
Solar (MW)	0	0	1798	0	0	0	0	0	750	0	0	0	0	0	489	0	0
Wind (MW)	4365	4129	4421	4445	4581	4698	4804	4969	5338	5204	4852	3886	2200	1817	2280	2959	3468
STOR (MW)	0	0	0	0	0	0	0	0	0	0	0	0	0	0	0	0	0
Total (MW)	4365	4129	6219	4445	4581	4698	4804	4969	6088	5204	4852	3886	2200	1817	2769	2959	3468



Weather	Source	Commentary
Latest forecast (Summary)	Met Office SEPA Natural Resources Wales	Today: Christmas Eve is expected to be cloudy and damp in the south with outbreaks of light rain, mainly in the south-west and Wales. Variable cloud and frequent, blustery showers in the north. A windy day. Tonight: Breezy tonight with cloud lingering in south England and Northern Ireland, but clear spells elsewhere with showers in the far north. Turning cloudy for many in the early hours with outbreaks of rain.
General Weather Concerns e.g. wind, rain, snow, flooding, GB Weather Warnings	Met Office Weather Warnings SEPA Natural Resources Wales	UK Weather Warnings Yellow warning of rain Areas affected: Wales ACTIVE started at: 22:00 GMT on Sat 23 December Ends: 18:00 GMT on Sun 24 December Persistent and at times heavy rain could bring some disruption. Yellow warning of wind Areas affected: East Midlands North East England North West England West Midlands Yorkshire & Humber

Weather	Source	Commentary
		<p>Starts: 08:00 GMT on Sun 24 December Ends: 22:00 GMT on Sun 24 December Strong, very gusty winds may again cause some travel disruption during Sunday, Christmas Eve.</p> <p>Yellow warning of wind Areas affected: Central, Tayside & Fife Grampian Highlands & Eilean Siar Orkney & Shetland SW Scotland, Lothian Borders Strathclyde</p> <p>Starts: 12:00 GMT on Sun 24 December Ends: 23:59 GMT on Sun 24 December Strong winds bring the potential for some disruption.</p> <p>Flood Warnings 1 flood warnings and 56 flood alerts issued for England.</p> <p>7 flood warnings and 19 flood alerts issued for Scotland.</p> <p>0 flood warnings and 15 flood alert issued for Wales</p>

Contains public sector information licensed under the Open Government Licence v1.0

Further Information	
BM Reports	https://www.bmreports.com
System Balancing Reports	https://www.nationalgrideso.com/industry-information/industry-data-and-reports/system-balancing-reports
Forecast Volumes and Costs	https://www.nationalgrideso.com/industry-information/industry-data-and-reports/forecast-volumes-and-costs