

**National Electricity
Transmission System Status Report**

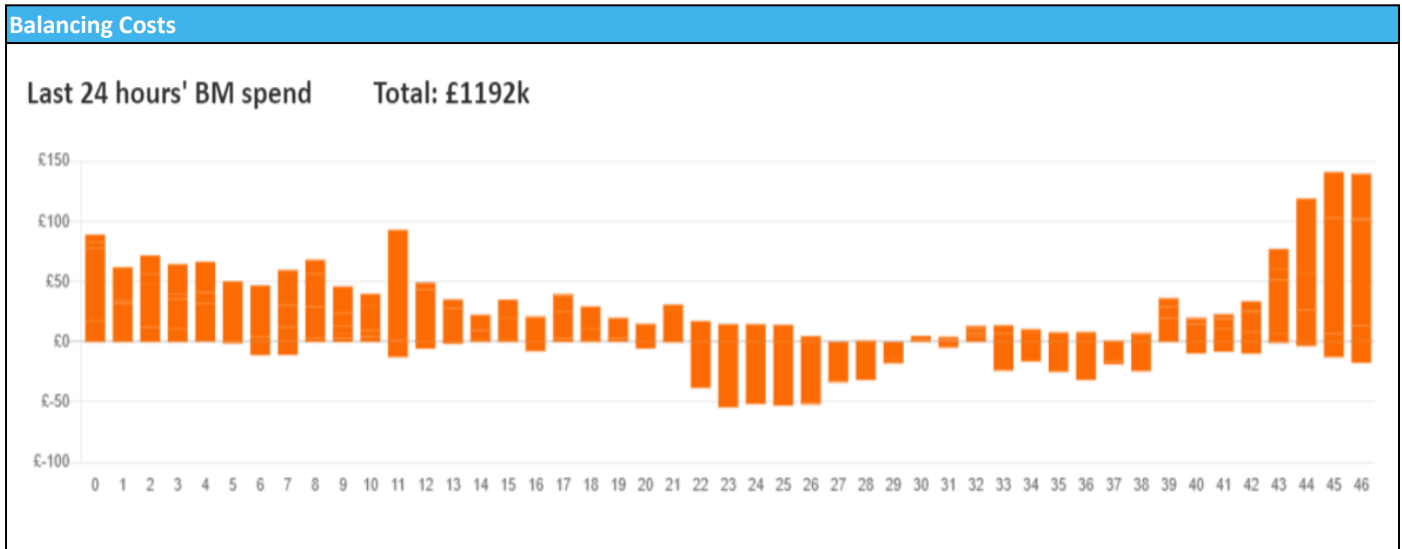


national**grid**ESO

National Electricity Transmission System Status Report
Saturday 09 December 2023

Today's High Level Risk Status Forecast for the next 24h			
General Status		Voltage	
Demand		System Inertia	
System Margins		Weather	
Generation		Transmission	
Active Constraints			
System Warning			

Today's Minimum De-Rated Margin	15,772 (SP 36)	
Current BMU Largest Loss Risk	Generation	1500 MW
	Demand	560 MW



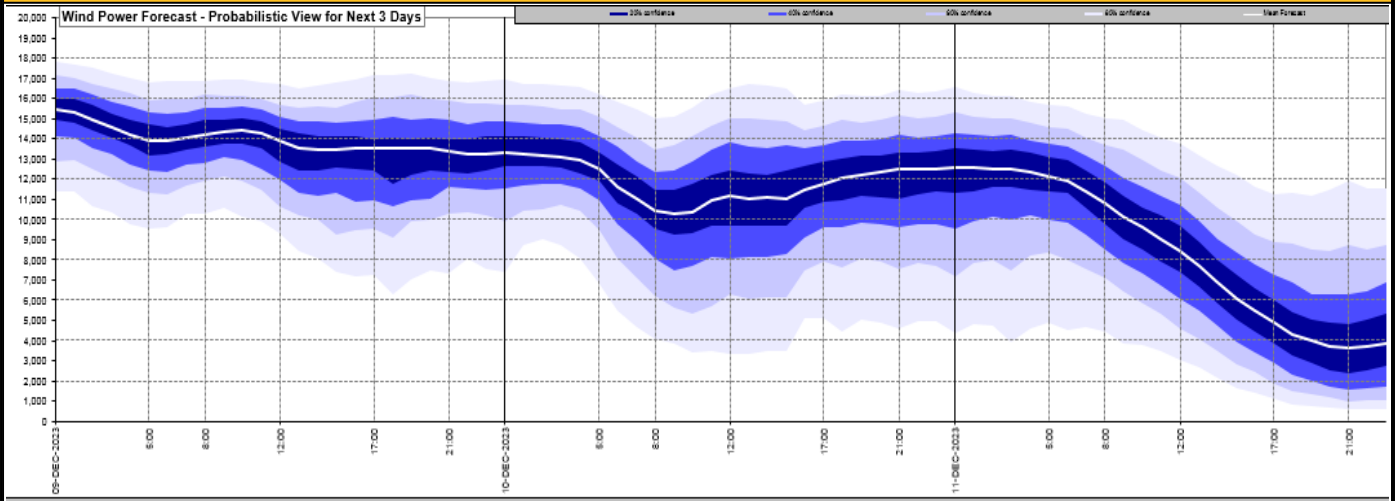
Yesterday's Market Summary

Cash Out Price (Max)	£205.00 (SP 13)
Cash Out Price (Min)	£1.00 (SP 7, & 46)
Peak Demand Yesterday	42,271 MW
Minimum Demand	20,870 MW

Interconnector Net Transfer Capacity (MWs)

Today	Import	Export	Remarks
Netherlands (BritNed)	1000	1000	Fully Available
France (IFA)	2000	2000	Fully Available
Belgium (Nemo)	1000	1025	Fully Available
Ireland (EWIC)	500	530	Fully Available
France (ElecLink)	1000	1000	Fully Available
Northern Ireland (MOYLE)	500	500	Fully Available
Norway (NSL)	1424	1424	Fully Available
France (IFA2)	0	0	Unavailable
Viking Link	0	0	Not yet commissioned

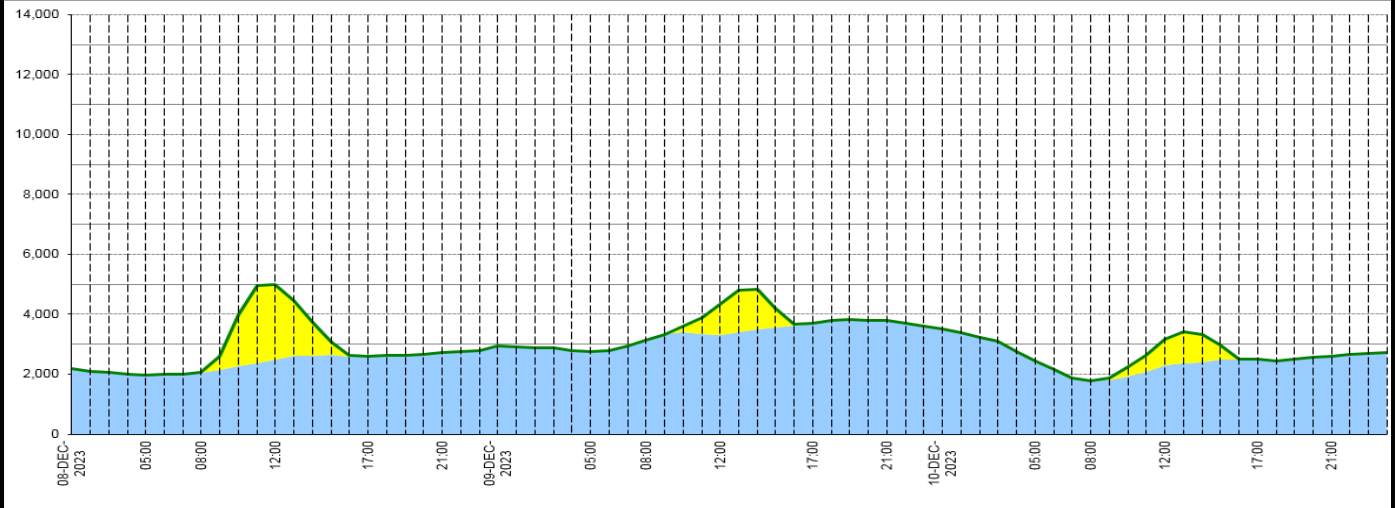
Wind Power Forecast



Expected embedded generation (MWs)

Embedded Generation Forecast

	08-DEC-2023					09-DEC-2023					10-DEC-2023						
	05:00	08:00	12:00	17:00	21:00	00:00	05:00	08:00	12:00	17:00	21:00	00:00	05:00	08:00	12:00	17:00	21:00
Solar (MW)	0	0	2513	0	0	0	0	0	1031	0	0	0	0	0	854	0	0
Wind (MW)	1984	2055	2488	2590	2738	2952	2772	3130	3306	3700	3790	3527	2428	1787	2296	2516	2611
STOR (MW)	0	0	0	0	0	0	0	0	0	0	0	0	0	0	0	0	0
Total (MW)	1984	2055	5001	2590	2738	2952	2772	3130	4337	3700	3790	3527	2428	1787	3150	2516	2611



Weather	Source	Commentary
Latest forecast (Summary)	Met Office SEPA Natural Resources Wales	<p>Today: Wet and windy start to the weekend across all parts with a band of heavy rain moving northeastwards. Strong wind with possible gales for parts of the west. Turning brighter in the south with scattered showers by the afternoon.</p> <p>Tonight: Rain continues for many parts of Scotland, northern and central England, slowly clearing by dawn as strong winds begin to ease. Clear and dry for many in the south.</p>
General Weather Concerns e.g. wind, rain, snow, flooding, GB Weather Warnings	Met Office Weather Warnings SEPA Natural Resources Wales	<p>UK Weather Warnings Yellow warning of rain Areas affected: SW Scotland, Lothian Borders Strathclyde ACTIVE Started at: 18:00 GMT on Fri 8 December Ends: 21:00 GMT on Sat 9 December Bands of heavy rain will bring a risk of localised flooding and some travel disruption Friday night and Saturday.</p> <ul style="list-style-type: none"> - Bus and train services probably affected with journey times taking longer - Spray and flooding on roads probably making journey times longer - Flooding of a few homes and businesses is possible - Some interruption to power supplies and other services possible <p>Yellow warning of rain Areas affected: South West England ACTIVE Started at: 01:00 GMT on Sat 9 December Ends: 09:00 GMT on Sat 9 December</p>

Weather	Source	Commentary
		<p>Following the heavy rainfall of recent days, a further spell of heavy rain early on Saturday may bring further disruption to travel.</p> <ul style="list-style-type: none"> - Spray and flooding on roads probably making journey times longer - Bus and train services probably affected with journey times taking longer - Flooding of a few homes and businesses is possible <p>Yellow warning of rain Areas affected: Northern Ireland Starts: 06:00 GMT on Sat 9 December Ends: 19:00 GMT on Sat 9 December A band of heavy rain will give a risk of localised flooding and some travel disruption on Saturday.</p> <ul style="list-style-type: none"> - Flooding of a few homes and businesses is possible - Bus and train services probably affected with journey times taking longer - Spray and flooding on roads probably making journey times longer - Some interruption to power supplies and other services possible <p>Yellow warning of wind Areas affected: East Midlands East of England North West England Northern Ireland South West England Wales West Midlands Yorkshire & Humber Starts: 09:00 GMT on Sat 9 December Ends: 23:45 GMT on Sat 9 December Strong winds perhaps leading to some transport disruption.</p> <ul style="list-style-type: none"> - Some delays to road, rail, air and ferry transport are likely - Probably some bus and train services affected, with some journeys taking longer - Delays for high-sided vehicles on exposed routes and bridges likely - Some short term loss of power and other services is possible - It's possible that some coastal routes, sea fronts and coastal communities will be affected by spray and/or large waves <p>Flood Warnings 26 flood warnings and 149 flood alerts issued for England.</p> <p>5 flood warnings and 9 flood alerts issued for Scotland.</p> <p>0 flood warnings and 3 flood alert issued for Wales</p>

Contains public sector information licensed under the Open Government Licence v1.0

Further Information	
BM Reports	https://www.bmreports.com
System Balancing Reports	https://www.nationalgrideso.com/industry-information/industry-data-and-reports/system-balancing-reports
Forecast Volumes and Costs	https://www.nationalgrideso.com/industry-information/industry-data-and-reports/forecast-volumes-and-costs