

**National Electricity  
Transmission System Status Report**

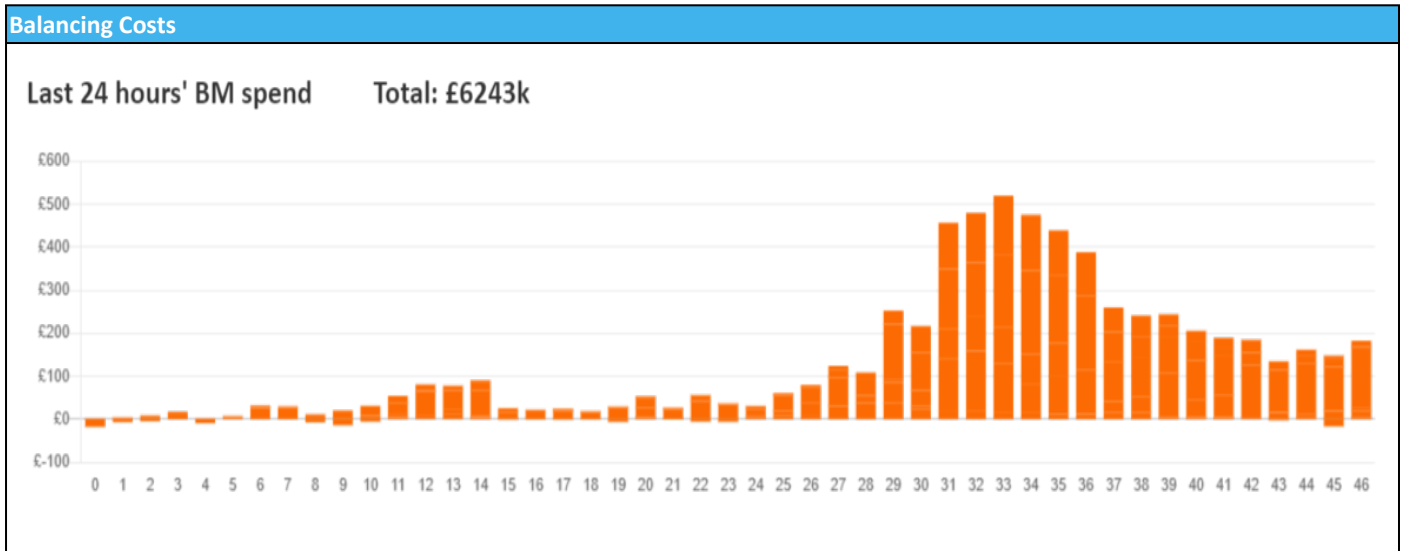


national**grid**ESO

**National Electricity Transmission System Status Report**  
Thursday 07 December 2023

Today's High Level Risk Status Forecast for the next 24h			
General Status		Voltage	
Demand		System Inertia	
System Margins		Weather	
Generation		Transmission	
Active Constraints			
<a href="#">System Warning</a>			

<a href="#">Today's Minimum De-Rated Margin</a>	14808.99 (SP 34)	
Current BMU Largest Loss Risk	Generation	1400 MW
	Demand	960 MW



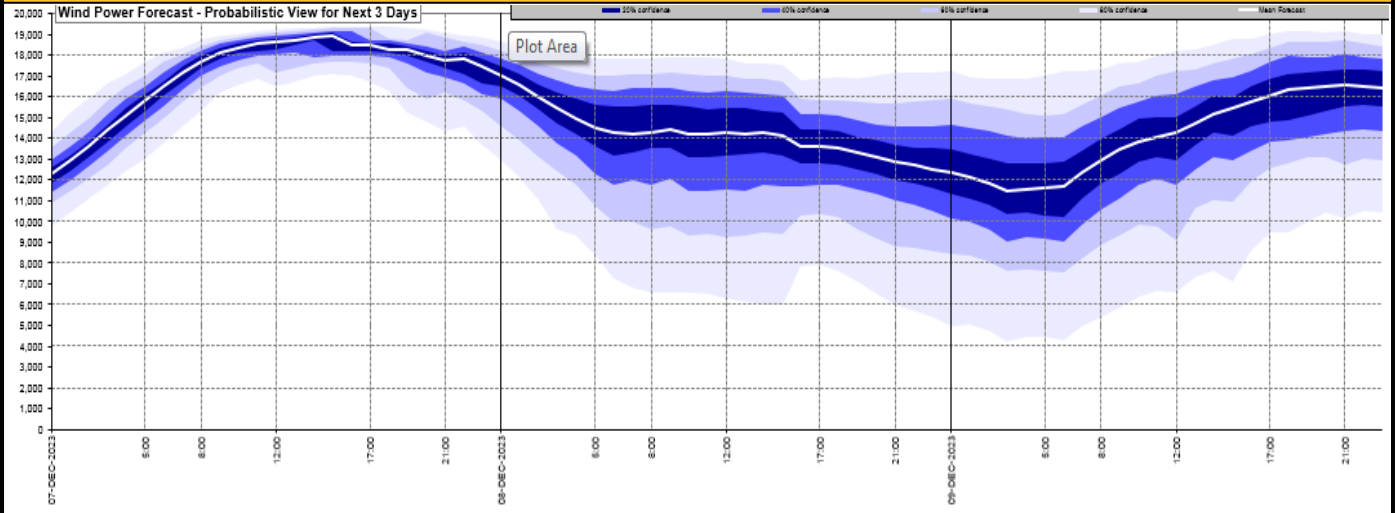
**Yesterday's Market Summary**

<a href="#">Cash Out Price (Max)</a>	£206 (SP 35)
<a href="#">Cash Out Price (Min)</a>	£0.00 (SP 1)
<a href="#">Peak Demand Yesterday</a>	44,453 MW
Minimum Demand	25,957 MW

**Interconnector Net Transfer Capacity (MWs)**

Today	Import	Export	Remarks
Netherlands (BritNed)	1000	1000	Fully Available
France (IFA)	2000	2000	Fully Available
Belgium (Nemo)	1000	1025	Fully Available
Ireland (EWIC)	500	530	Fully Available
France (ElecLink)	1000	1000	Fully Available
Northern Ireland (MOYLE)	500	500	Fully Available
Norway (NSL)	1424	1424	Fully Available
France (IFA2)	0	0	Unavailable
Viking Link	0	0	Not yet commissioned

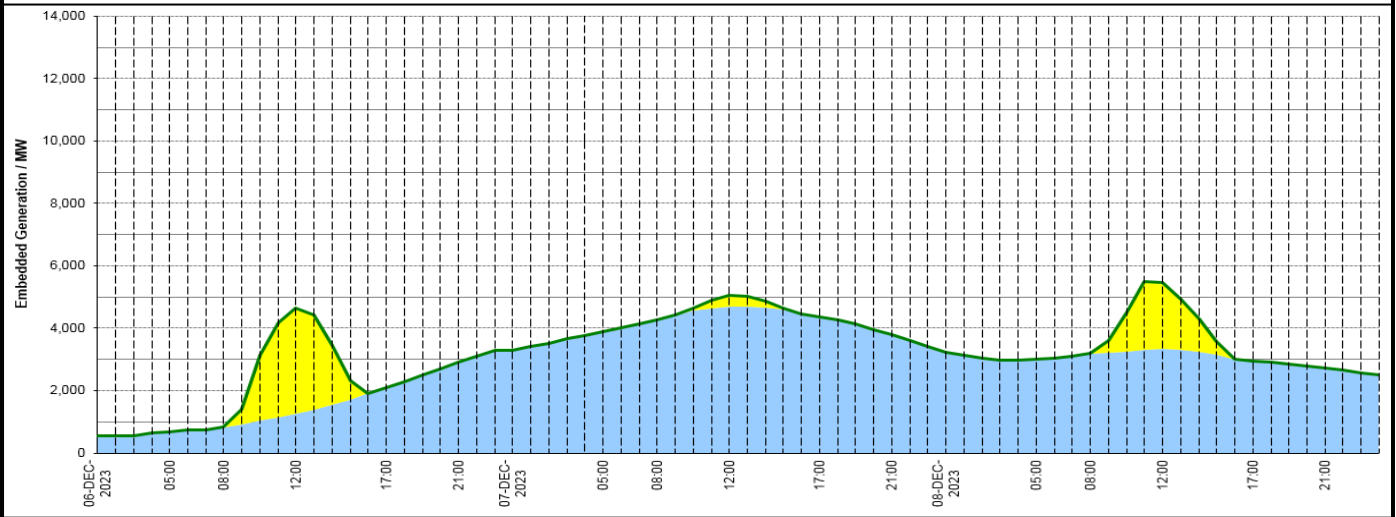
**Wind Power Forecast**




**Expected embedded generation (MWs)**

**Embedded Generation Forecast**

	06-DEC-2023					07-DEC-2023					08-DEC-2023						
	05:00	08:00	12:00	17:00	21:00	00:00	05:00	08:00	12:00	17:00	21:00	00:00	05:00	08:00	12:00	17:00	21:00
Solar (MW)	0	0	3391	0	0	0	0	0	376	0	0	0	0	0	2122	0	0
Wind (MW)	689	835	1261	2084	2904	3299	3905	4274	4680	4360	3806	3237	2998	3183	3334	2955	2737
STOR (MW)	0	0	0	0	0	0	0	0	0	0	0	0	0	0	0	0	0
<b>Total (MW)</b>	<b>689</b>	<b>835</b>	<b>4652</b>	<b>2084</b>	<b>2904</b>	<b>3299</b>	<b>3905</b>	<b>4274</b>	<b>5056</b>	<b>4360</b>	<b>3806</b>	<b>3237</b>	<b>2998</b>	<b>3183</b>	<b>5456</b>	<b>2955</b>	<b>2737</b>



Weather	Source	Commentary
Latest forecast (Summary)	<a href="#">Met Office</a> <a href="#">SEPA</a> <a href="#">Natural Resources Wales</a>	<p><b>Today:</b> Dull with pulses of rain, particularly heavy along south-facing hills and coasts. Some south-eastern areas remaining dry until the afternoon. Becoming drier in the west during the afternoon. Widely windy with strong gusts and coastal gales. Noticeably milder.</p> <p><b>Tonight:</b> Rain clearing north and east, however cloud will linger particularly in the east with some mist and fog in places. Skies clearing from the west with some showers. Feeling milder.</p>
General Weather Concerns e.g. wind, rain, snow, flooding, GB Weather Warnings	<a href="#">Met Office</a> <a href="#">Weather Warnings</a> <a href="#">SEPA</a> <a href="#">Natural Resources Wales</a>	<p><b>UK Weather Warnings</b> Yellow warning of rain Areas affected: North West England</p> <p>ACTIVE Started at: 00:00 GMT on Thu 7 December Ends: 19:00 GMT on Thu 7 December Persistent and at times heavy rain, along with some snow melt, likely to lead to some disruption to travel in places.</p> <ul style="list-style-type: none"> <li>- Spray and flooding on roads and perhaps railways probably making journey times longer</li> <li>- Flooding of a few homes and businesses is possible</li> </ul>

Weather	Source	Commentary
		<p>Yellow warning of rain Areas affected: Wales</p> <p>ACTIVEStarted at: 00:00 GMT on Thu 7 DecemberEnds: 18:00 GMT on Thu 7 December Heavy rain is likely to bring some disruption to travel and flooding in places during Thursday.</p> <ul style="list-style-type: none"> <li>- Spray and flooding could lead to difficult driving conditions and some road closures</li> <li>- Delays or cancellations to train and bus services are possible</li> <li>- Some communities may be cut off by flooded roads</li> <li>- Homes and businesses could be flooded, causing damage to some buildings</li> <li>- Possible power cuts and loss of other services to some homes and businesses</li> </ul>
		<p>Yellow warning of rain Areas affected: SW Scotland, Lothian Borders   Strathclyde</p> <p>ACTIVEStarted at: 00:00 GMT on Thu 7 DecemberEnds: 18:00 GMT on Thu 7 December Heavy rain likely bringing some travel disruption on Thursday and possible flooding.</p> <ul style="list-style-type: none"> <li>- Spray and flooding could lead to difficult driving conditions and some road closures</li> <li>- Where flooding occurs, there is a slight chance of delays or cancellations to train and bus services</li> <li>- There is a small chance that homes and businesses could be flooded, causing damage to some buildings</li> <li>- There is a small chance of fast flowing or deep floodwater causing danger to life</li> <li>- There is a small chance that some communities will become cut off by flooded roads</li> <li>- There is a slight chance of power cuts and loss of other services to some homes and businesses</li> </ul>
		<p>Yellow warning of rain Areas affected: South West England</p> <p>ACTIVEStarted at: 00:00 GMT on Thu 7 DecemberEnds: 19:00 GMT on Thu 7 December Heavy rain is likely to bring some travel disruption and flooding in places on Thursday.</p> <ul style="list-style-type: none"> <li>- Spray and flooding could lead to difficult driving conditions and some road closures</li> <li>- Delays or cancellations to train and bus services are possible</li> <li>- Some communities may be cut off by flooded roads</li> <li>- Homes and businesses could be flooded, causing damage to some buildings</li> </ul>
		<p>Yellow warning of rain Areas affected: Central, Tayside &amp; Fife   Grampian</p> <p>Starts: 06:00 GMT on Thu 7 DecemberEnds: 23:59 GMT on Thu 7 December Heavy rain likely bringing some travel disruption on Thursday and possible flooding.</p> <ul style="list-style-type: none"> <li>- Spray and flooding could lead to difficult driving conditions and some road closures</li> <li>- Delays or cancellations to train and bus services are possible</li> <li>- Homes and businesses could be flooded, causing damage to some buildings</li> <li>- Some communities may be cut off by flooded roads</li> <li>- Possible power cuts and loss of other services to some homes and businesses</li> </ul> <p>Yellow warning of rain Areas affected: Northern Ireland</p> <p>Starts: 10:00 GMT on Thu 7 DecemberEnds: 16:00 GMT on Thu 7 December Heavy rain during Thursday is likely to cause travel disruption in a few places.</p> <ul style="list-style-type: none"> <li>- Spray and flooding on roads probably making journey times longer</li> <li>- Flooding of a few homes and businesses is likely</li> </ul> <p>Yellow warning of rain Areas affected: London &amp; South East England   South West England</p>

Weather	Source	Commentary
		<p>Starts: 11:00 GMT on Thu 7 December Ends: 22:00 GMT on Thu 7 December A band of heavy rain will move eastwards across the area during Thursday, perhaps leading to some disruption</p> <ul style="list-style-type: none"> <li>- Spray and flooding on roads probably making journey times longer</li> <li>- Bus and train services probably affected with journey times taking longer</li> <li>- Flooding of a few homes and businesses is likely</li> </ul> <p>Yellow warning of rain Areas affected: East Midlands   West Midlands</p> <p>Starts: 12:00 GMT on Thu 7 December Ends: 20:00 GMT on Thu 7 December Heavy rain is likely to bring some disruption to travel and flooding in a few places during Thursday</p> <ul style="list-style-type: none"> <li>- Flooding of a few homes and businesses is likely</li> <li>- Bus and train services probably affected with journey times taking longer</li> <li>- Spray and flooding on roads probably making journey times longer</li> </ul> <p><b>Flood Warnings</b> 23 flood warnings and 118 flood alerts issued for England.</p> <p>0 flood warnings and 5 flood alerts issued for Scotland.</p> <p>0 flood warnings and 1 flood alert issued for Wales</p>

*Contains public sector information licensed under the Open Government Licence v1.0*

Further Information	
BM Reports	<a href="https://www.bmreports.com">https://www.bmreports.com</a>
System Balancing Reports	<a href="https://www.nationalgrideso.com/industry-information/industry-data-and-reports/system-balancing-reports">https://www.nationalgrideso.com/industry-information/industry-data-and-reports/system-balancing-reports</a>
Forecast Volumes and Costs	<a href="https://www.nationalgrideso.com/industry-information/industry-data-and-reports/forecast-volumes-and-costs">https://www.nationalgrideso.com/industry-information/industry-data-and-reports/forecast-volumes-and-costs</a>