

National Electricity Transmission System Status Report

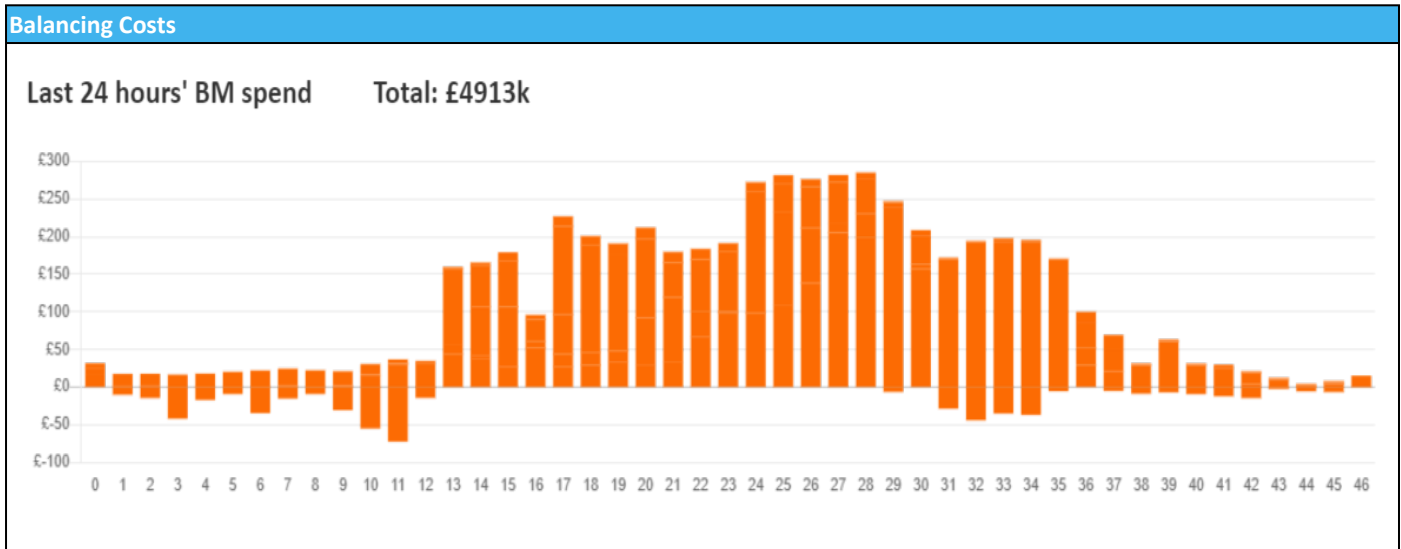


nationalgridESO

National Electricity Transmission System Status Report
Saturday 02 December 2023

Today's High Level Risk Status Forecast for the next 24h			
General Status		Voltage	
Demand		System Inertia	
System Margins		Weather	
Generation		Transmission	
Active Constraints			
System Warning			

Today's Minimum De-Rated Margin	1673 (SP 35)	
Current BMU Largest Loss Risk	Generation	1400 MW
	Demand	560 MW



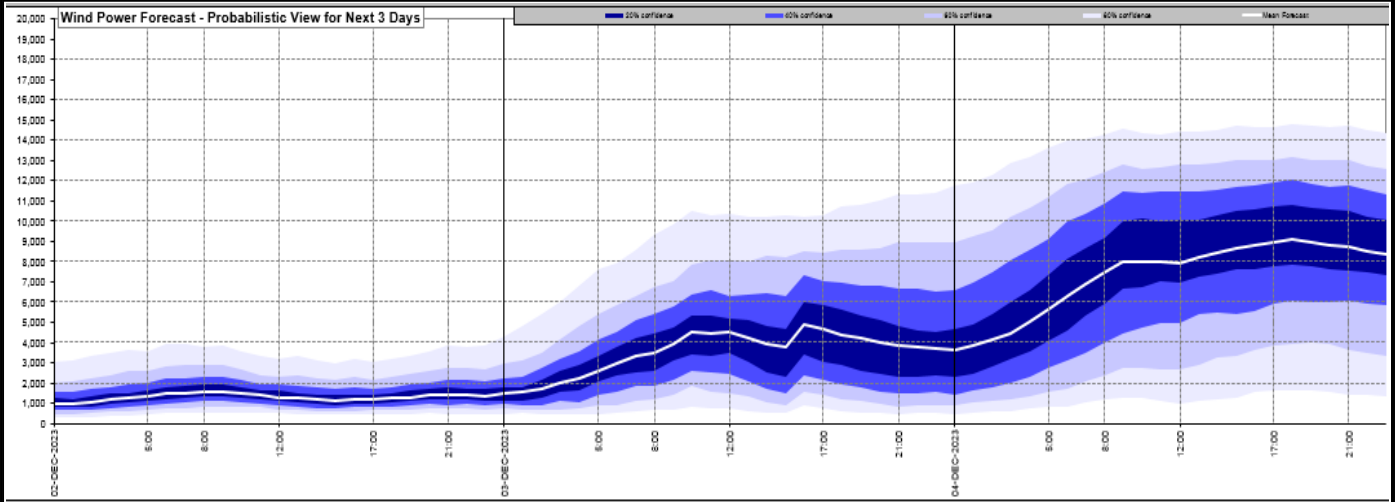
Yesterday's Market Summary

Cash Out Price (Max)	£300.00 (SP 39)
Cash Out Price (Min)	£55.00 (SP 46)
Peak Demand Yesterday	45,276 MW
Minimum Demand	26,276 MW

Interconnector Net Transfer Capacity (MWs)

Today	Import	Export	Remarks
Netherlands (BritNed)	1000	1000	Fully Available
France (IFA)	2000	2000	Fully Available
Belgium (Nemo)	1000	1025	Fully Available
Ireland (EWIC)	500	530	Fully Available
France (ElecLink)	1000	1000	Fully Available
Northern Ireland (MOYLE)	500	500	Fully Available
Norway (NSL)	1424	1424	Fully Available
France (IFA2)	0	0	Unavailable
Viking Link	0	0	Not yet commissioned

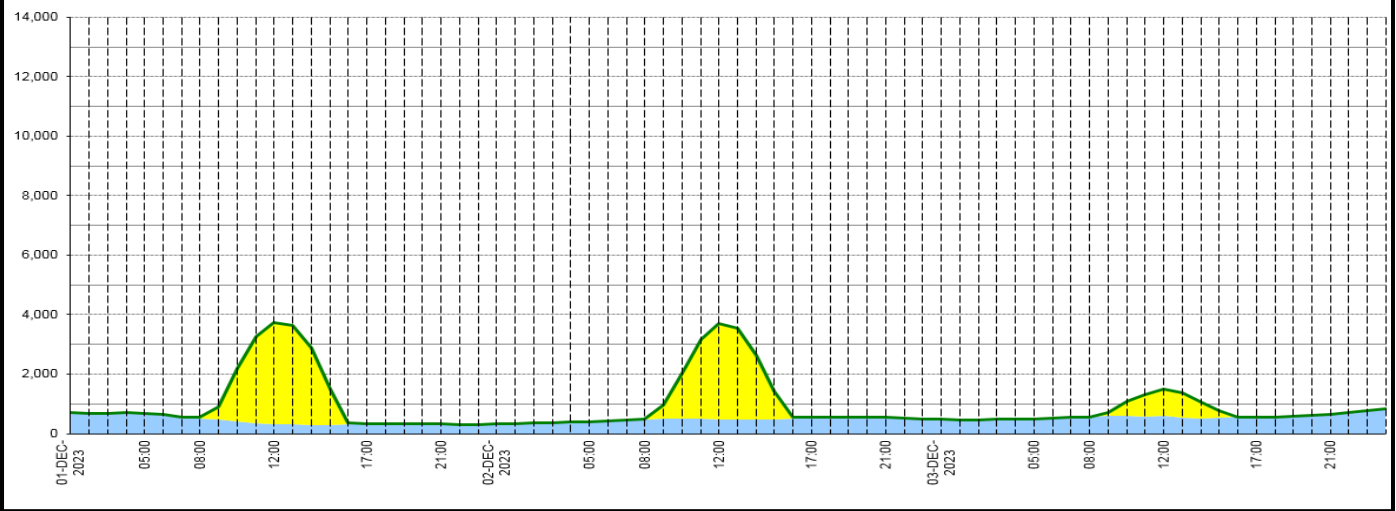
Wind Power Forecast



Expected embedded generation (MWs)

Embedded Generation Forecast

	01-DEC-2023					02-DEC-2023					03-DEC-2023							
	00:00	05:00	08:00	12:00	17:00	21:00	00:00	05:00	08:00	12:00	17:00	21:00	00:00	05:00	08:00	12:00	17:00	21:00
Solar (MW)	0	0	48	3421	0	0	0	0	0	3231	0	0	0	0	0	910	0	0
Wind (MW)	663	512	323	329	326	337	401	480	483	555	555	487	484	555	586	565	659	659
STOR (MW)	0	0	0	0	0	0	0	0	0	0	0	0	0	0	0	0	0	0
Total (MW)	663	512	3744	329	326	337	401	480	3714	555	555	487	484	555	1496	565	659	659



Weather	Source	Commentary
Latest forecast (Summary)	Met Office SEPA Natural Resources Wales	<p>Today: Frost and freezing fog slowly lifting in central and southeast areas leaving a dry, but cold day with sunny spells. Coastal showers will continue to affect the west and far north, some wintry and spreading inland across Wales.</p> <p>Tonight: Widespread frost and freezing fog developing under clear skies. Outbreaks of showers along western coasts, some wintry, moving further east across southern and central parts. Snow likely on Welsh hills.</p>
General Weather Concerns e.g. wind, rain, snow, flooding, GB Weather Warnings	Met Office Weather Warnings SEPA Natural Resources Wales	<p>UK Weather Warnings Yellow warning of snow and ice Areas affected: East Midlands East of England Highlands & Eilean Siar London & South East England North East England Orkney & Shetland Yorkshire & Humber ACTIVE Started at: 17:00 GMT on Fri 1 December Ends: 10:00 GMT on Sat 2 December Wintry showers will lead to some icy patches and snow cover in places. - Some roads and railways likely to be affected with longer journey times by road, bus and train services - Some injuries from slips and falls on icy surfaces - Probably some icy patches on some untreated roads, pavements and cycle paths</p> <p>Yellow warning of snow and ice</p>

Weather	Source	Commentary
		<p>Areas affected: North West England SW Scotland, Lothian Borders Strathclyde ACTIVE Started at: 17:00 GMT on Fri 1 December Ends: 11:00 GMT on Sat 2 December Showers are expected to move inland overnight leading to a risk of icy patches and also some snow over higher ground.</p> <ul style="list-style-type: none"> - Some roads and railways likely to be affected with longer journey times by road, bus and train services - Probably some icy patches on some untreated roads, pavements and cycle paths - Some injuries from slips and falls on icy surfaces <p>Yellow warning of ice Areas affected: London & South East England South West England ACTIVE Started at: 22:30 GMT on Fri 1 December Ends: 10:00 GMT on Sat 2 December Icy patches are expected on untreated surfaces.</p> <ul style="list-style-type: none"> - Probably some icy patches on some untreated roads, pavements and cycle paths - Some injuries from slips and falls on icy surfaces
		<p>Flood Warnings 0 flood warnings and 12 flood alerts issued for England.</p> <p>0 flood warnings and 0 flood alerts issued for Scotland.</p>
		<p>0 flood warnings and 0 flood alert issued for Wales</p>

Contains public sector information licensed under the Open Government Licence v1.0

Further Information	
BM Reports	https://www.bmreports.com
System Balancing Reports	https://www.nationalgrideso.com/industry-information/industry-data-and-reports/system-balancing-reports
Forecast Volumes and Costs	https://www.nationalgrideso.com/industry-information/industry-data-and-reports/forecast-volumes-and-costs