

**National Electricity
Transmission System Status Report**

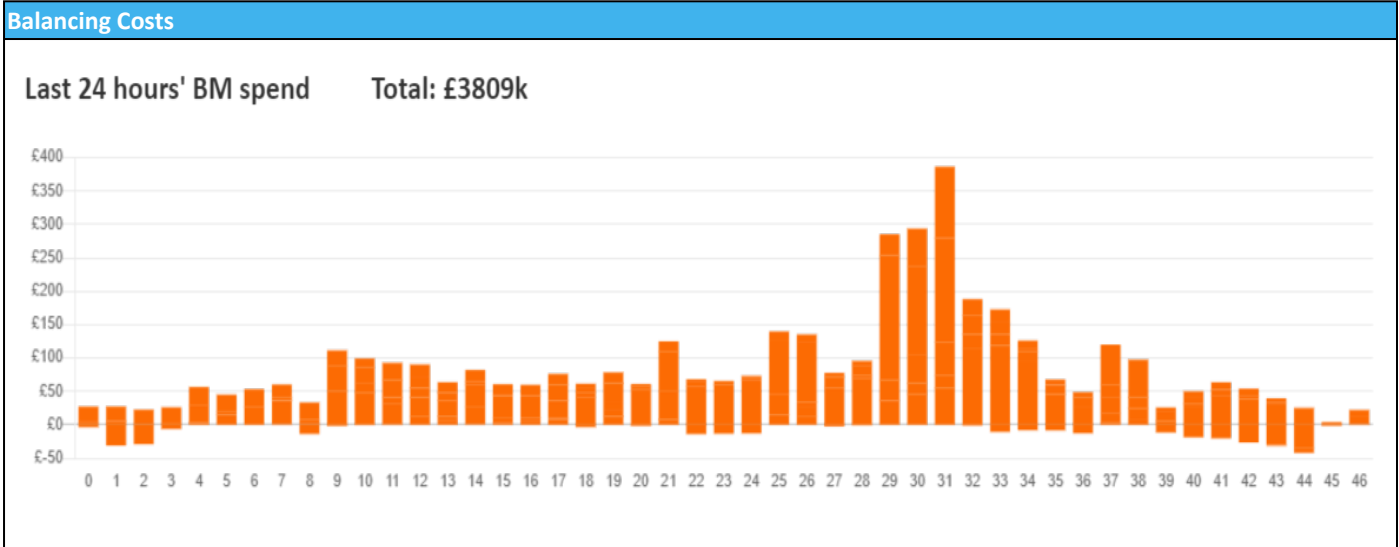


national**grid**ESO

National Electricity Transmission System Status Report
Wednesday 29 November 2023

Today's High Level Risk Status Forecast for the next 24h			
General Status		Voltage	
Demand		System Inertia	
System Margins		Weather	
Generation		Transmission	
Active Constraints			
System Warning			

Today's Minimum De-Rated Margin	955 (SP 36)	
Current BMU Largest Loss Risk	Generation	1400 MW
	Demand	560 MW



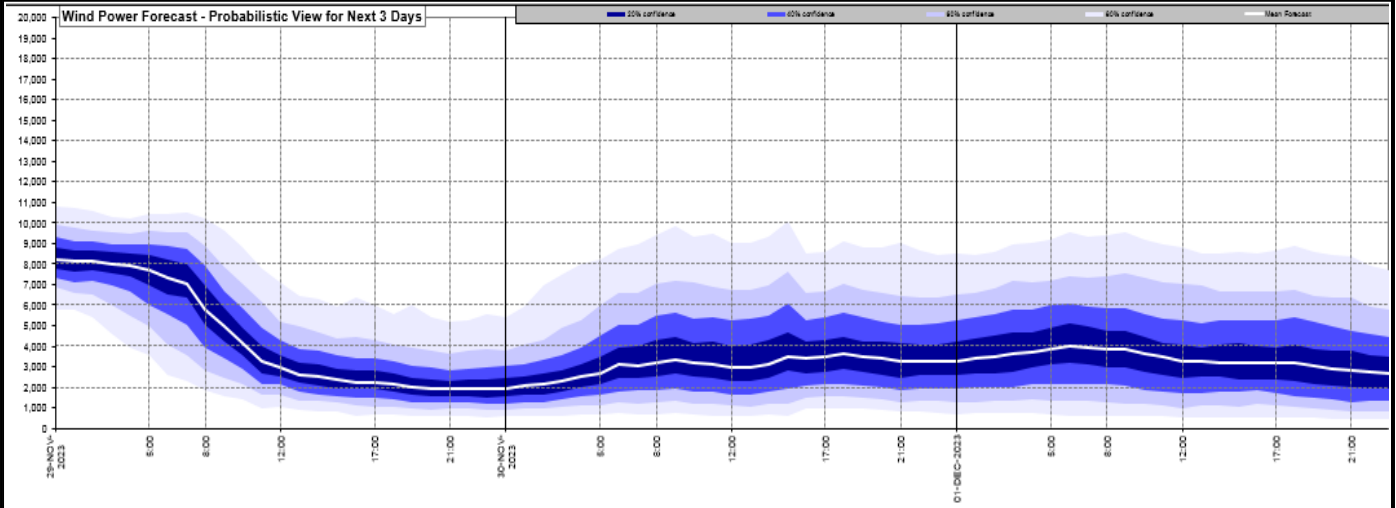
Yesterday's Market Summary

Cash Out Price (Max)	£206.41 (SP 33)
Cash Out Price (Min)	£62.00 (SP 4)
Peak Demand Yesterday	43,408 MW
Minimum Demand	23,519 MW

Interconnector Net Transfer Capacity (MWs)

Today	Import	Export	Remarks
Netherlands (BritNed)	1000	1000	Fully Available
France (IFA)	1500	1500	Partially available
Belgium (Nemo)	1000	1025	Fully Available
Ireland (EWIC)	500	530	Fully Available
France (ElecLink)	1000	1000	Fully Available
Northern Ireland (MOYLE)	500	500	Fully Available
Norway (NSL)	1424	1424	Fully Available
France (IFA2)	0	0	Unavailable
Viking Link	0	0	Not yet commissioned

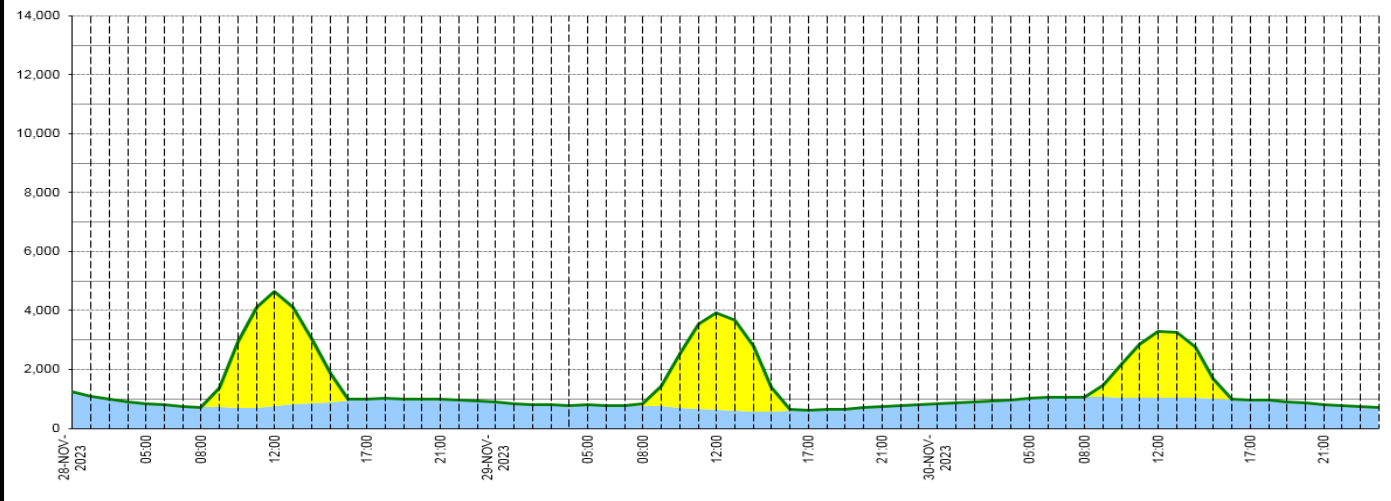
Wind Power Forecast



Expected embedded generation (MWs)

Embedded Generation Forecast

	28-NOV-2023					29-NOV-2023					30-NOV-2023						
	05:00	08:00	12:00	17:00	21:00	00:00	05:00	08:00	12:00	17:00	21:00	00:00	05:00	08:00	12:00	17:00	21:00
Solar (MW)	0	0	3887	0	0	0	0	50	3307	0	0	0	0	0	2259	0	0
Wind (MW)	839	716	752	1008	982	887	792	773	625	625	741	824	1016	1067	1039	961	813
STOR (MW)	0	0	0	0	0	0	0	0	0	0	0	0	0	0	0	0	0
Total (MW)	839	716	4639	1008	982	887	792	823	3932	625	741	824	1016	1067	3298	961	813



Weather	Source	Commentary
Latest forecast (Summary)	Met Office SEPA Natural Resources Wales	<p>Today: A dry and bright day, with sunny spells. A few wintry showers are possible, mainly towards the coasts and also largely across the northeast of the UK. Possible rain in the southwest later. A cold feeling day for all.</p> <p>Tonight: Frost developing through the evening, becoming widespread overnight. Icy stretches where snow showers continue. Further patchy rain across the southwest of England, turning to snow over the Moors.</p>
General Weather Concerns e.g. wind, rain, snow, flooding, GB Weather Warnings	Met Office Weather Warnings SEPA Natural Resources Wales	<p>UK Weather Warnings Yellow warning of snow and ice Areas affected: Central, Tayside & Fife Grampian Highlands & Eilean Siar North East England Orkney & Shetland SW Scotland, Lothian Borders Yorkshire & Humber ACTIVE Started at: 17:00 GMT on Tue 28 November Ends: 11:00 GMT on Wed 29 November Icy patches and snow are possible, and may lead to hazardous conditions Tuesday evening and overnight into Wednesday morning. - Some injuries from slips and falls on icy surfaces - Probably some icy patches on some untreated roads, pavements and cycle paths - Some roads and railways likely to be affected with longer journey times by road, bus and train services</p>

Weather	Source	Commentary
		<p>Yellow warning of snow and ice Areas affected: Central, Tayside & Fife Grampian Highlands & Eilean Siar North East England SW Scotland, Lothian Borders Yorkshire & Humber</p> <p>Starts: 17:00 GMT on Wed 29 November Ends: 11:00 GMT on Thu 30 November Showers, falling as snow inland, will lead to icy patches and hazardous conditions.</p> <ul style="list-style-type: none"> - Some roads and railways likely to be affected with longer journey times by road, bus and train services - Some injuries from slips and falls on icy surfaces - Probably some icy patches on some untreated roads, pavements and cycle paths
		<p>Flood Warnings 0 flood warnings and 24 flood alerts issued for England.</p> <p>0 flood warnings and 0 flood alerts issued for Scotland.</p> <p>0 flood warnings and 0 flood alert issued for Wales</p>

Contains public sector information licensed under the Open Government Licence v1.0

Further Information	
BM Reports	https://www.bmreports.com
System Balancing Reports	https://www.nationalgrideso.com/industry-information/industry-data-and-reports/system-balancing-reports
Forecast Volumes and Costs	https://www.nationalgrideso.com/industry-information/industry-data-and-reports/forecast-volumes-and-costs