

# National Electricity Transmission System Status Report

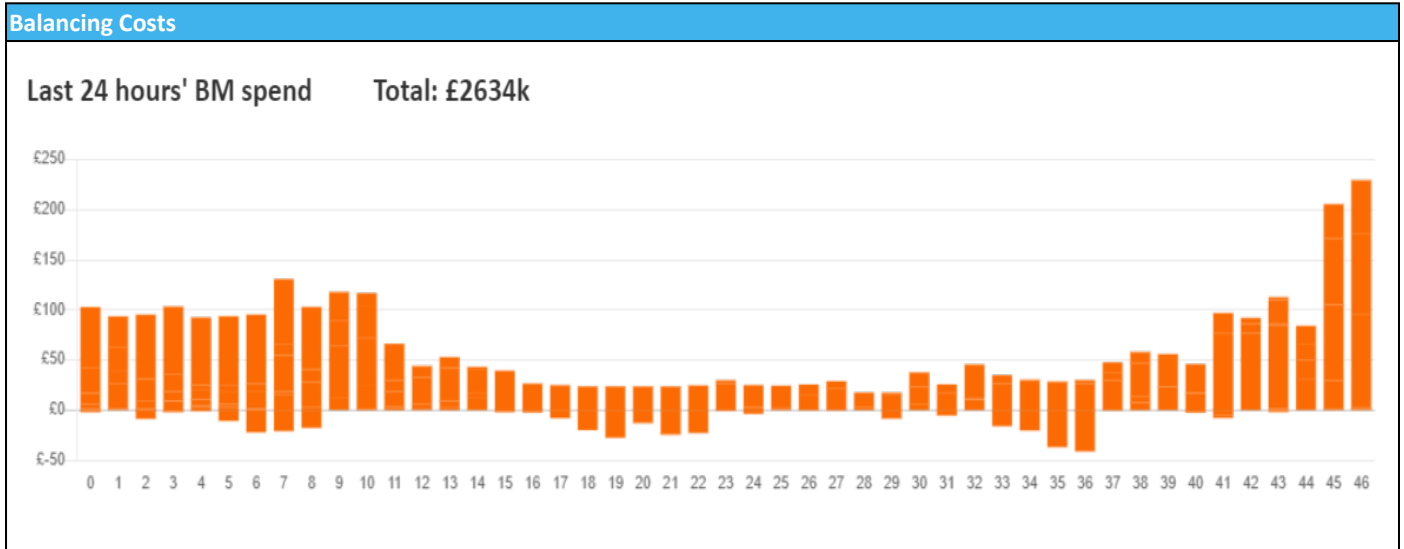


nationalgridESO

National Electricity Transmission System Status Report  
Wednesday 01 November 2023

Today's High Level Risk Status Forecast for the next 24h			
General Status		Voltage	
Demand		System Inertia	
System Margins		Weather	
Generation		Transmission	
Active Constraints			
<a href="#">System Warning</a>			

<a href="#">Today's Minimum De-Rated Margin</a>	16,436 (SP 37)	
Current BMU Largest Loss Risk	Generation	1400 MW
	Demand	1060 MW



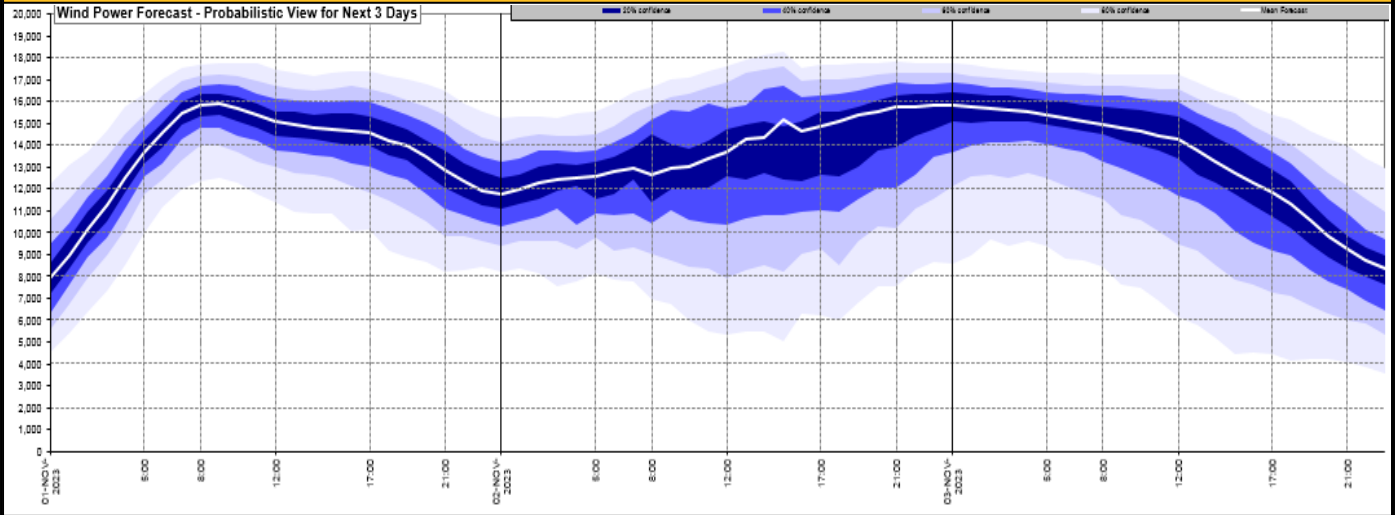
**Yesterday's Market Summary**

<a href="#">Cash Out Price (Max)</a>	£165 (SP 43)
<a href="#">Cash Out Price (Min)</a>	£58.5 (SP 8)
<a href="#">Peak Demand Yesterday</a>	37,723 MW
Minimum Demand	20,482 MW

**Interconnector Net Transfer Capacity (MWs)**

Today	Import	Export	Remarks
Netherlands (BritNed)	1000	1000	Fully Available
France (IFA)	1500	1500	Partially available
Belgium (Nemo)	1000	1025	Fully Available
Ireland (EWIC)	500	530	Fully Available
France (ElecLink)	1000	1000	Fully Available
Northern Ireland (MOYLE)	500	500	Fully Available
Norway (NSL)	1424	1424	Fully Available from 14:00 hours
France (IFA2)	1014	1014	Fully Available
Viking Link	0	0	Not yet commissioned

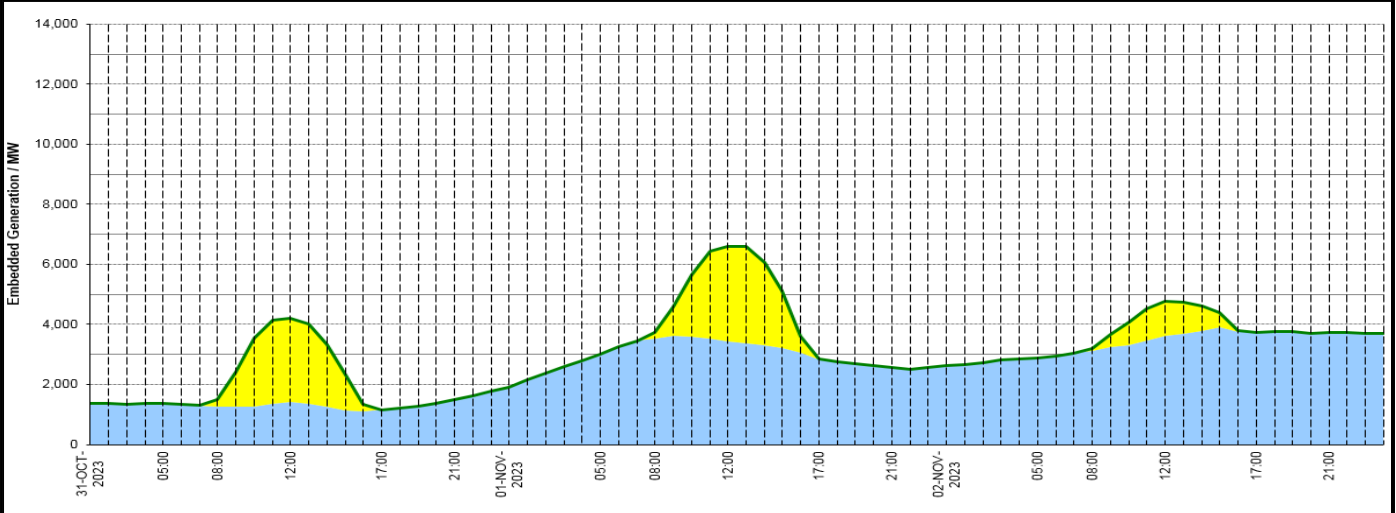
**Wind Power Forecast**



**Expected embedded generation (MWs)**

**Embedded Generation Forecast**

Embedded Generation Estimates														Last run: 01-Nov-2023 04:32:53			
	31-OCT-2023					01-NOV-2023					02-NOV-2023						
	05:00	08:00	12:00	17:00	21:00	00:00	05:00	08:00	12:00	17:00	21:00	00:00	05:00	08:00	12:00	17:00	21:00
Solar (MW)	0	214	2782	0	0	0	0	198	3149	0	0	0	0	78	1137	0	0
Wind (MW)	1371	1270	1408	1155	1508	1919	2999	3543	3441	2845	2553	2617	2884	3124	3632	3736	3736
STOR (MW)	0	0	0	0	0	0	0	0	0	0	0	0	0	0	0	0	0
<b>Total (MW)</b>	<b>1371</b>	<b>1484</b>	<b>4190</b>	<b>1155</b>	<b>1508</b>	<b>1919</b>	<b>2999</b>	<b>3741</b>	<b>6590</b>	<b>2845</b>	<b>2553</b>	<b>2617</b>	<b>2884</b>	<b>3202</b>	<b>4769</b>	<b>3736</b>	<b>3736</b>



Weather	Source	Commentary
Latest forecast (Summary)	<a href="#">Met Office</a> <a href="#">SEPA</a> <a href="#">Natural Resources Wales</a>	<b>Today:</b> Rain slowly clearing Scotland through Wednesday. Elsewhere sunny spells and showers giving way to heavy rain and gales spreading in from the southwest as Storm Ciarán arrives later. <b>Tonight:</b> Bands of rain, locally heavy moving northeast. Becoming windy with coastal gales developing in the west and later near English Channel coasts. Colder but dry in the far north.
General Weather Concerns e.g. wind, rain, snow, flooding, GB Weather Warnings	<a href="#">Met Office</a> <a href="#">Weather Warnings</a> <a href="#">SEPA</a> <a href="#">Natural Resources Wales</a>	<b>UK Weather Warnings</b> Yellow warning of rain and wind Areas affected: London & South East England   South West England Travel disruption is possible from a combination of heavy rain and strong winds on Wednesday morning. - Some interruption to power supplies and other services likely and damage to trees is also possible - Spray and flooding on roads probably making journey times longer - Delays for high-sided vehicles on exposed routes and bridges likely - Some short term loss of power and other services is possible - It's likely that some coastal routes, sea fronts and coastal communities will be

Weather	Source	Commentary
		<p>affected by spray and/or large waves - Some delays to road, rail, air and ferry transport are likely</p> <p>Amber warning of wind Areas affected: East of England   London &amp; South East England   South West England</p> <p>Very strong winds associated with Storm Ciarán may disrupt travel, utilities, and cause some structural damage.</p> <ul style="list-style-type: none"> <li>- Flying debris could result in a danger to life</li> <li>- Damage to buildings and homes is possible, with roofs blown off and power lines and trees brought down</li> <li>- Roads, bridges and railway lines may close, with delays and cancellations to bus, train, ferry services and flights</li> <li>- Power cuts could occur and affect other services, such as mobile phone coverage</li> <li>- There is potential for large waves and beach material being thrown onto sea fronts, coastal roads and properties</li> </ul> <p><b>Flood Warnings</b></p> <p>24 flood warnings and 108 flood alerts issued for England.</p> <p>1 flood warnings and 8 flood alerts issued for Scotland.</p> <p>1 flood warnings and 12 flood alerts issued for Wales</p>

*Contains public sector information licensed under the Open Government Licence v1.0*

Further Information	
BM Reports	<a href="https://www.bmreports.com">https://www.bmreports.com</a>
System Balancing Reports	<a href="https://www.nationalgrideso.com/industry-information/industry-data-and-reports/system-balancing-reports">https://www.nationalgrideso.com/industry-information/industry-data-and-reports/system-balancing-reports</a>
Forecast Volumes and Costs	<a href="https://www.nationalgrideso.com/industry-information/industry-data-and-reports/forecast-volumes-and-costs">https://www.nationalgrideso.com/industry-information/industry-data-and-reports/forecast-volumes-and-costs</a>