

**National Electricity
Transmission System Status Report**

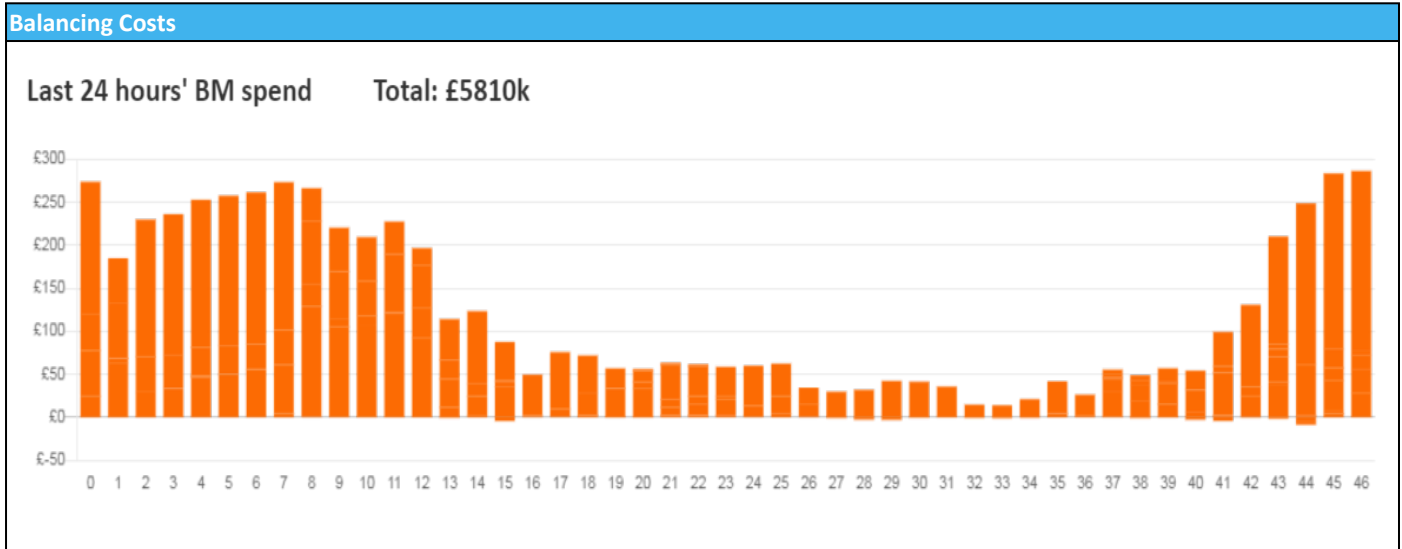


national**grid**ESO

National Electricity Transmission System Status Report
Wednesday 20 September 2023

Today's High Level Risk Status Forecast for the next 24h			
General Status		Voltage	
Demand		System Inertia	
System Margins		Weather	
Generation		Transmission	
Active Constraints			
System Warning			

Today's Minimum De-Rated Margin	12, 945 (SP 41)	
Current BMU Largest Loss Risk	Generation	1500 MW
	Demand	560 MW



Yesterday's Market Summary

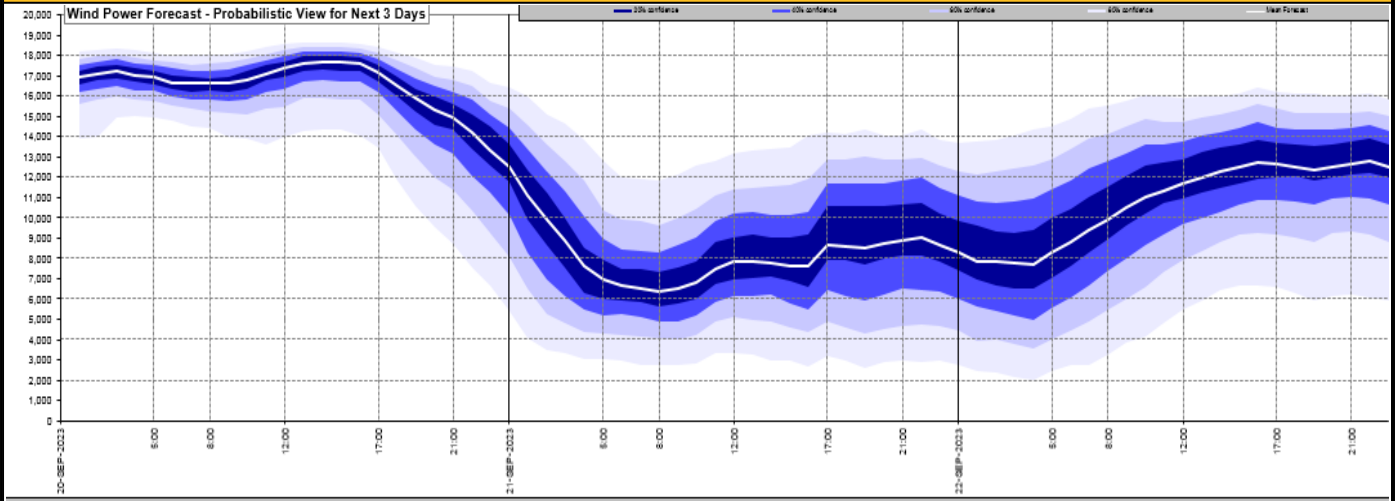
Cash Out Price (Max)	£133.00 (SP 39- 41)
Cash Out Price (Min)	-£88.68 (SP 46)
Peak Demand Yesterday	30,685 MW
Minimum Demand	16,909 MW

Interconnector

Net Transfer Capacity (MWs)

Today	Import	Export	Remarks
Netherlands (BritNed)	0	0	Not Available - on outage 06:00 18/09/23 to 22:00 22/09/23
France (IFA)	1000	1000	Partially available
Belgium (Nemo)	1000	1000	Fully Available
Ireland (EWIC)	500	530	Fully Available
France (ElecLink)	1014	1014	Fully Available
Northern Ireland (MOYLE)	500	500	Available
Norway (NSL)	1437	1437	Fully Available
France (IFA2)	1014	1014	Fully Available

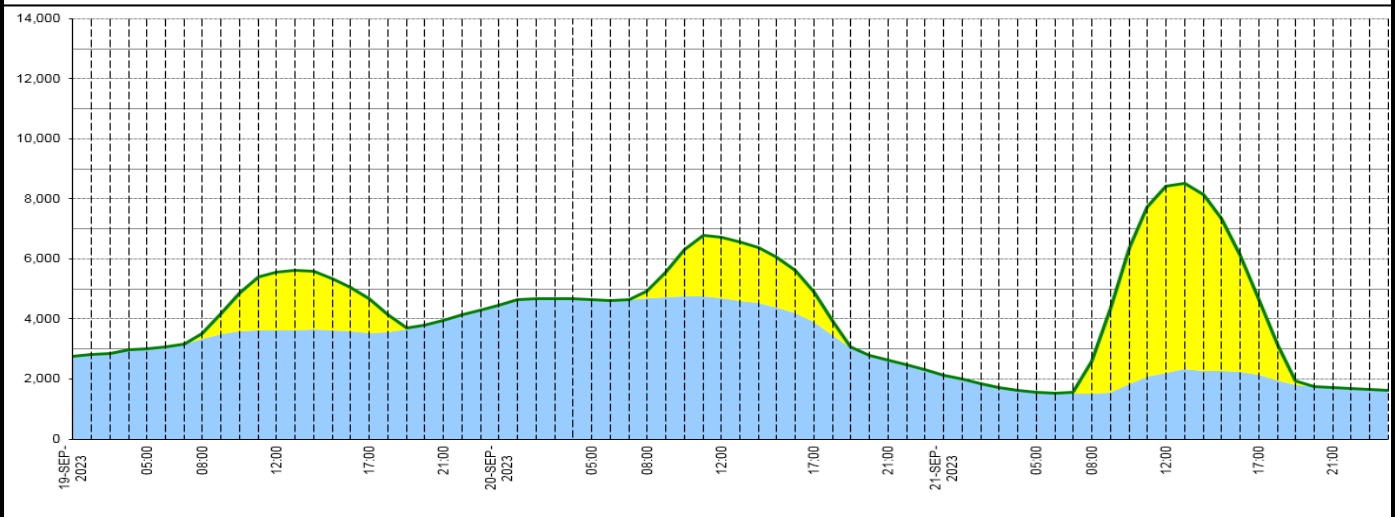
Wind Power Forecast



Expected embedded generation (MWs)

Embedded Generation Forecast

	19-SEP-2023					20-SEP-2023					21-SEP-2023						
	05:00	08:00	12:00	17:00	21:00	00:00	05:00	08:00	12:00	17:00	21:00	00:00	05:00	08:00	12:00	17:00	21:00
Solar (MW)	0	172	1930	1160	0	0	0	233	2029	995	0	0	0	1090	6219	2495	0
Wind (MW)	3003	3342	3636	3529	3967	4447	4643	4686	4682	3892	2619	2141	1566	1500	2214	2143	1729
STOR (MW)	0	0	0	0	0	0	0	0	0	0	0	0	0	0	0	0	0
Total (MW)	3003	3514	5566	4689	3967	4447	4643	4919	6711	4887	2619	2141	1566	2590	8433	4638	1729



Weather	Source	Commentary
Latest forecast (Summary)	Met Office SEPA Natural Resources Wales	<p>Today: A band of heavy rain will continue southeastwards, though lingering across southeast England in the afternoon. Behind this turning fresher with sunny spells and showers. A windy day especially on exposed coasts, but easing during the day for most.</p> <p>Tonight: Rain slow to clear in the southeast. Elsewhere blustery showers slowly easing during the evening in land, but remaining on western coasts. Windy, but easing slowly.</p>
General Weather Concerns e.g. wind, rain, snow, flooding, GB Weather Warnings	Met Office Weather Warnings SEPA Natural Resources Wales	<p>UK Weather Warnings Yellow warning of rain Areas affected: East Midlands North East England North West England Wales Yorkshire & Humber</p> <p>ACTIVE Started at: 06:00 BST on Tue 19 September Ends: 18:00 BST on Wed 20 September Heavy rain affecting parts of northwest England and Wales may lead to some flooding.</p> <ul style="list-style-type: none"> - Flooding of a few homes and businesses is likely - Bus and train services probably affected with journey times taking longer - Spray and flooding on roads probably making journey times longer - Some interruption to power supplies and other services likely

Weather	Source	Commentary
		<p>Yellow warning of rain Areas affected: Central, Tayside & Fife Highlands & Eilean Siar SW Scotland, Lothian Borders Strathclyde</p> <p>ACTIVE Started at: 18:00 BST on Tue 19 September Ends: 08:00 BST on Wed 20 September Heavy rain may lead to some flooding and disruption to travel</p> <ul style="list-style-type: none"> - Flooding of a few homes and businesses is likely - Bus and train services probably affected with journey times taking longer - Spray and flooding on roads probably making journey times longer <p>Flood Warnings 0 flood warnings and 14 flood alerts issued for England.</p> <p>8 flood warnings and 8 flood alerts issued for Scotland.</p> <p>0 flood warnings and 12 flood alerts issued for Wales.</p>

Contains public sector information licensed under the Open Government Licence v1.0

Further Information	
BM Reports	https://www.bmreports.com
System Balancing Reports	https://www.nationalgrideso.com/balancing-data/system-balancing-reports
Forecast Volumes and Costs	https://www.nationalgrideso.com/balancing-data/forecast-volumes-and-costs
NGESO Insights	https://www.nationalgrideso.com/insights