

# National Electricity Transmission System Status Report

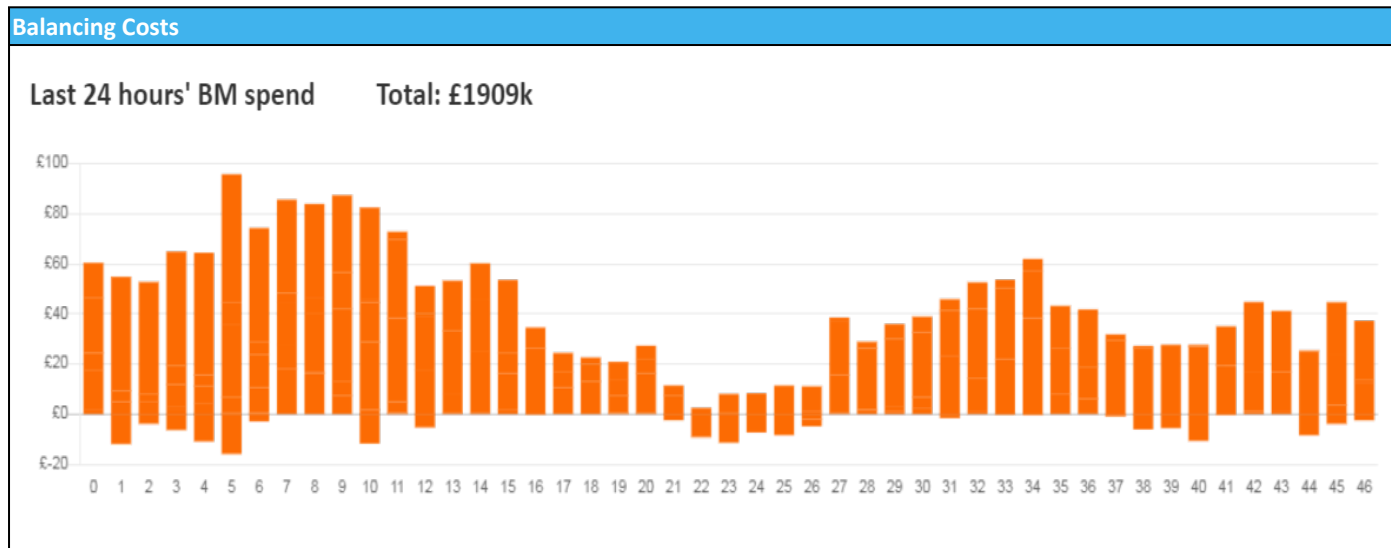


national**grid**ESO

**National Electricity Transmission System Status Report**  
**Friday 28 July 2023**

| Today's High Level Risk Status Forecast for the next 24h |  |                |  |
|--|--|----------------|--|
| General Status   |  | Voltage        |  |
| Demand   |  | System Inertia |  |
| System Margins   |  | Weather        |  |
| Generation   |  | Transmission   |  |
| Active Constraints                                       |  |                |  |
| <a href="#">System Warning</a>                           |  |                |  |

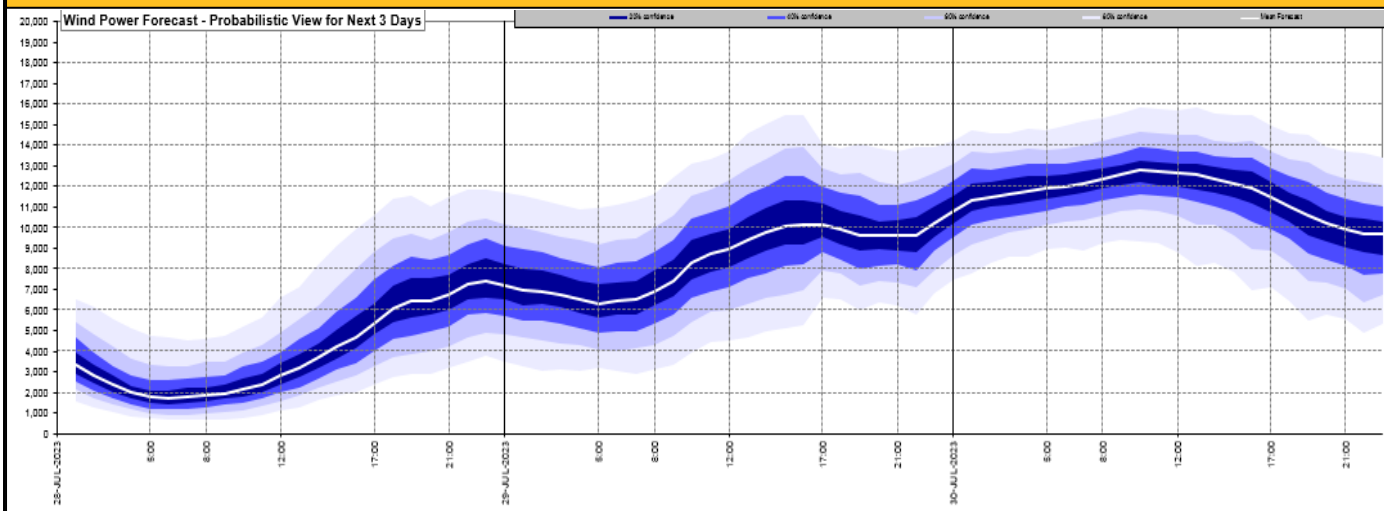
|   |              |         |
|---|--------------|---------|
| <a href="#">Today's Minimum De-Rated Margin</a> | 4675 (SP 18) |         |
| Current BMU Largest Loss Risk                   | Generation   | 1500 MW |
|   | Demand       | 950 MW  |



| Yesterday's Market Summary            |                |
|---------------------------------------|----------------|
| <a href="#">Cash Out Price (Max)</a>  | £135.0 (SP 47) |
| <a href="#">Cash Out Price (Min)</a>  | £15.0 (SP 28)  |
| <a href="#">Peak Demand Yesterday</a> | 29,546 MW      |
| Minimum Demand                        | 17,860 MW      |

| Interconnector Net Transfer Capacity (MWs) |        |        |                 |
|--|--------|--------|-----------------|
| Today                                      | Import | Export | Remarks         |
| Netherlands (BritNed)                      | 1100   | 1130   | Fully Available |
| France (IFA)                               | 2000   | 2000   | Fully Available |
| Belgium (Nemo)                             | 1000   | 1000   | Fully Available |
| Ireland (EWIC)                             | 500    | 530    | Fully Available |
| France (ElecLink)                          | 1014   | 1014   | Fully Available |
| Northern Ireland (MOYLE)                   | 500    | 500    | Fully Available |
| Norway (NSL)                               | 1437   | 1437   | Fully Available |
| France (IFA2)                              | 1014   | 1014   | Fully Available |

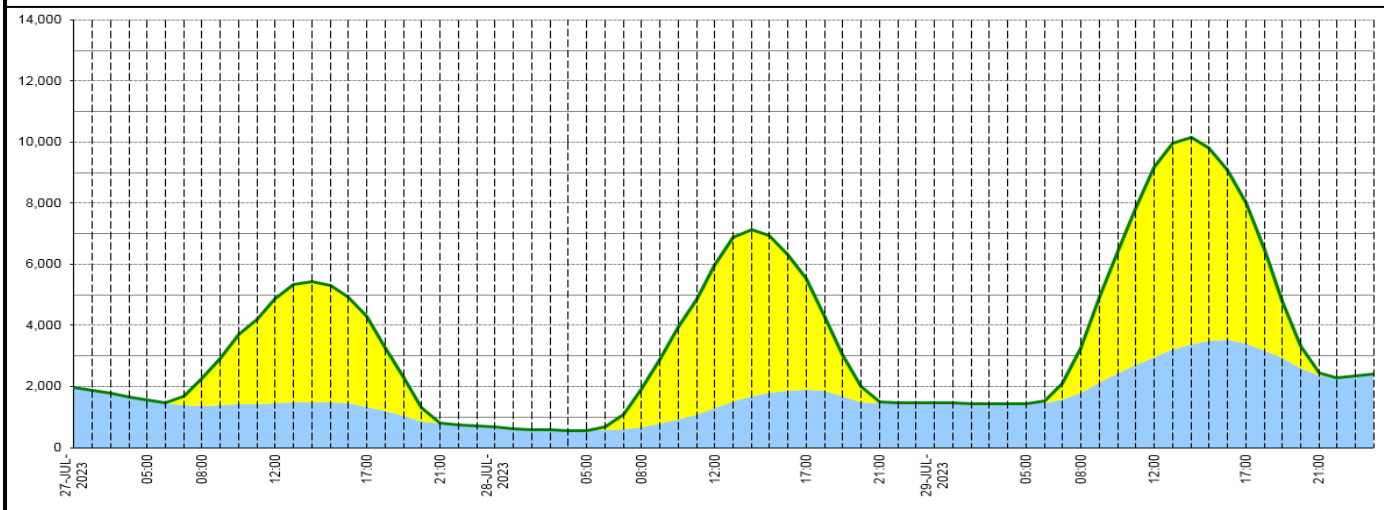
## Wind Power Forecast



## Expected embedded generation (MWs)

### Embedded Generation Forecast

|            | 27-JUL-2023 |       |       |       |       | 28-JUL-2023 |       |       |       |       | 29-JUL-2023 |       |       |       |       |       |       |
|------------|-------------|-------|-------|-------|-------|-------------|-------|-------|-------|-------|-------------|-------|-------|-------|-------|-------|-------|
|            | 05:00       | 08:00 | 12:00 | 17:00 | 21:00 | 00:00       | 05:00 | 08:00 | 12:00 | 17:00 | 21:00       | 00:00 | 05:00 | 08:00 | 12:00 | 17:00 | 21:00 |
| Solar (MW) | 0           | 875   | 3400  | 2974  | 25    | 0           | 0     | 1238  | 4669  | 3630  | 35          | 0     | 0     | 1469  | 6192  | 4619  | 72    |
| Wind (MW)  | 1564        | 1364  | 1451  | 1335  | 776   | 672         | 555   | 678   | 1291  | 1890  | 1451        | 1479  | 1435  | 1796  | 2972  | 3391  | 2357  |
| STOR (MW)  | 0           | 0     | 0     | 0     | 0     | 0           | 0     | 0     | 0     | 0     | 0           | 0     | 0     | 0     | 0     | 0     | 0     |
| Total (MW) | 1564        | 2239  | 4851  | 4309  | 801   | 672         | 555   | 1916  | 5960  | 5520  | 1486        | 1479  | 1435  | 3265  | 9164  | 8010  | 2429  |



| Weather  | Source  | Commentary  |
|--|---|---|
| Latest forecast (Summary)  | <a href="#">Met Office</a><br><a href="#">SEPA</a><br><a href="#">Natural Resources Wales</a>                                     | <b>Today:</b><br>Rain confined to the far northeast. Elsewhere, low cloud with outbreaks of drizzle soon clearing. Sunny spells and showers already across Northern Ireland becoming more widespread. Some places staying dry. Turning breezy in the northwest.<br><b>Tonight:</b><br>Bands of heavier showers arrive from the west during the evening. Winds strengthening overnight especially on exposed coasts in the west. |
| General Weather Concerns<br>e.g. wind, rain, snow, flooding, GB Weather Warnings | <a href="#">Met Office</a><br><a href="#">Weather Warnings</a><br><a href="#">SEPA</a><br><a href="#">Natural Resources Wales</a> | <b>UK Weather Warnings</b><br>No weather warnings are in force for the UK<br><b>Flood Warnings</b><br>0 flood warnings and 0 flood alerts issued for England.<br>0 flood warnings and 0 flood alerts issued for Scotland.<br>0 flood warning and 5 flood alerts issued for Wales.   |

| Further Information        |   |
|----------------------------|---|
| BM Reports                 | <a href="https://www.bmreports.com">https://www.bmreports.com</a>   |
| System Balancing Reports   | <a href="https://www.nationalgrideso.com/balancing-data/system-balancing-reports">https://www.nationalgrideso.com/balancing-data/system-balancing-reports</a>     |
| Forecast Volumes and Costs | <a href="https://www.nationalgrideso.com/balancing-data/forecast-volumes-and-costs">https://www.nationalgrideso.com/balancing-data/forecast-volumes-and-costs</a> |
| NGESO Insights             | <a href="https://www.nationalgrideso.com/insights">https://www.nationalgrideso.com/insights</a>   |