

**National Electricity
Transmission System Status Report**

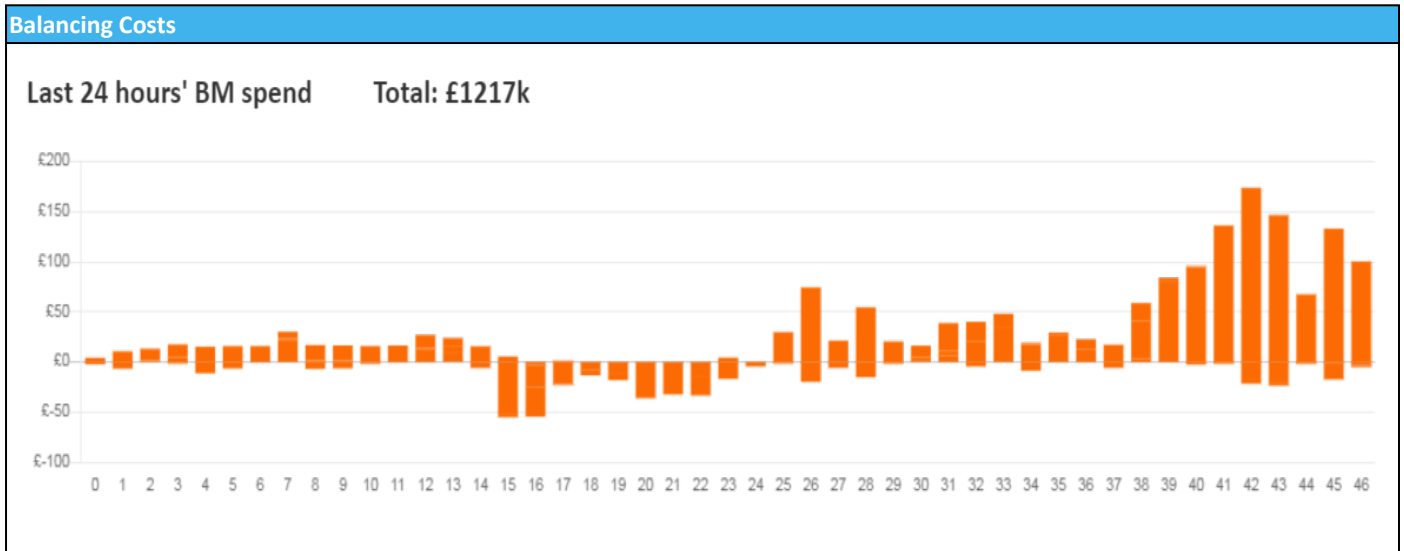


national**grid**ESO

National Electricity Transmission System Status Report
Monday 19 June 2023

Today's High Level Risk Status Forecast for the next 24h			
General Status		Voltage	
Demand		System Inertia	
System Margins		Weather	
Generation		Transmission	
Active Constraints			
System Warning			

Today's Minimum De-Rated Margin	4,286 (SP 41)	
Current BMU Largest Loss Risk	Generation	1400 MW
	Demand	750 MW



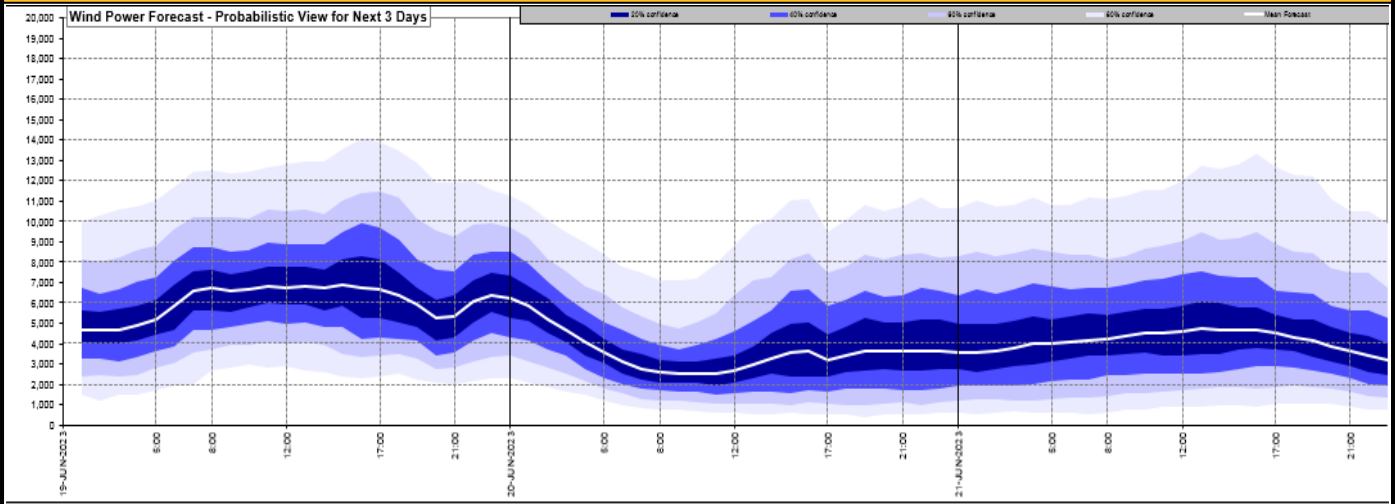
Yesterday's Market Summary

Cash Out Price (Max)	£175.00 (SP 44-45)
Cash Out Price (Min)	£25.00 (SP 18 & 24)
Peak Demand Yesterday	28,146 MW
Minimum Demand	16,581 MW

Interconnector Net Transfer Capacity (MWs)

Today	Import	Export	Remarks
Netherlands (BritNed)	1100	1130	Fully Available
France (IFA)	2000	2000	Fully Available
Belgium (Nemo)	1000	1000	Fully Available
Ireland (EWIC)	500	530	Fully Available
France (ElecLink)	1014	1014	Fully Available
Northern Ireland (MOYLE)	500	500	Fully Available
Norway (NSL)	1400	1400	Fully Available
France (IFA2)	0	0	Planned Outage

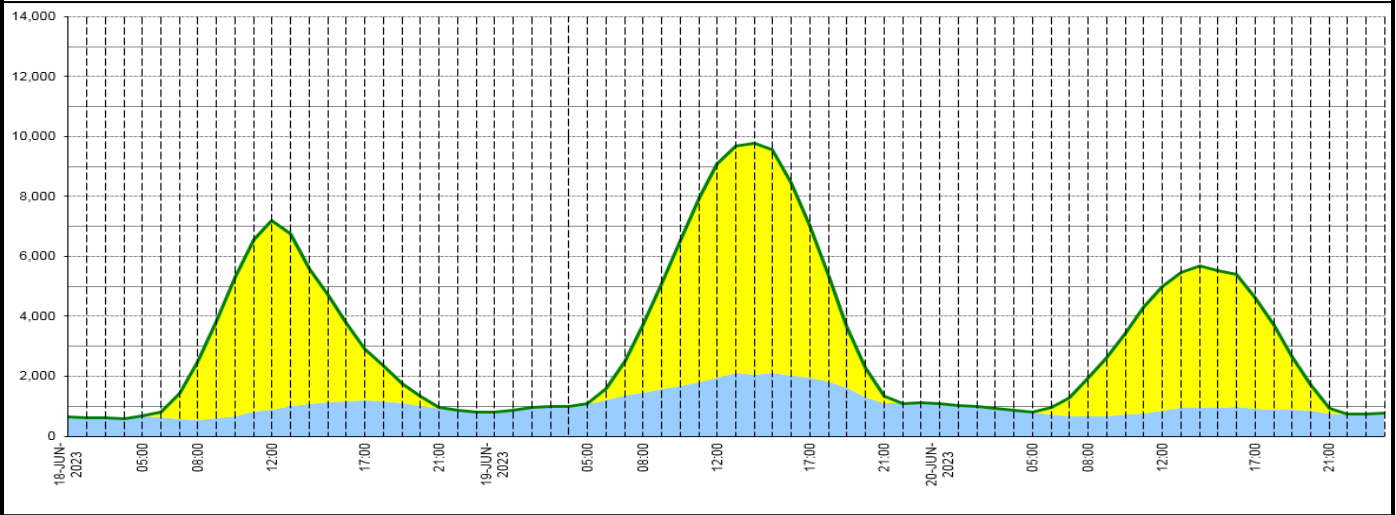
Wind Power Forecast



Expected embedded generation (MWs)

Embedded Generation Forecast

	18-JUN-2023					19-JUN-2023					20-JUN-2023						
	05:00	08:00	12:00	17:00	21:00	00:00	05:00	08:00	12:00	17:00	21:00	00:00	05:00	08:00	12:00	17:00	21:00
Solar (MW)	0	1930	6286	1716	44	0	19	2234	7128	5053	230	0	0	1292	4152	3683	168
Wind (MW)	672	543	894	1198	909	794	1061	1454	1954	1944	1102	1083	799	661	844	918	769
STOR (MW)	0	0	0	0	0	0	0	0	0	0	0	0	0	0	0	0	0
Total (MW)	672	2473	7180	2914	953	794	1080	3688	9082	6997	1332	1083	799	1953	4996	4601	937



Weather	Source	Commentary
Latest forecast (Summary)	Met Office SEPA Natural Resources Wales	<p>Today: Rain across Scotland, some heavy, will slowly clear away to the north, to leave sunshine and scattered showers across northern and western parts of the UK. Some thunderstorms developing. Mainly dry further south and east with very warm sunshine.</p> <p>Tonight: Becoming mainly dry during the evening with late sunshine. Clear spells, with patches of low cloud and fog overnight. However, showery rain, some heavy, developing across southwest England and Wales.</p>
General Weather Concerns e.g. wind, rain, snow, flooding, GB Weather Warnings	Met Office Weather Warnings SEPA Natural Resources Wales	<p>UK Weather Warnings Yellow warning of rain Areas affected: Central, Tayside & Fife Grampian</p> <p>ACTIVE Started at: 00:00 BST on Mon 19 June Ends: 12:00 BST on Mon 19 June Heavy rain will continue northwards on Monday bringing the risk of disruption</p> <ul style="list-style-type: none"> - Bus and train services probably affected with journey times taking longer - Spray and flooding on roads probably making journey times longer - Flooding of a few homes and businesses is possible - Some interruption to power supplies and other services possible <p>Flood Warnings</p>

Weather	Source	Commentary
		<p>3 flood warnings and 34 flood alerts issued for England.</p> <p>0 flood warnings and 14 flood alerts issued for Scotland.</p> <p>0 flood warnings and 0 flood alerts issued for Wales.</p>

Contains public sector information licensed under the Open Government Licence v1.0

Further Information	
BM Reports	https://www.bmreports.com
System Balancing Reports	https://www.nationalgrideso.com/balancing-data/system-balancing-reports
Forecast Volumes and Costs	https://www.nationalgrideso.com/balancing-data/forecast-volumes-and-costs
NGESO Insights	https://www.nationalgrideso.com/insights