

National Electricity Transmission System Status Report



nationalgridESO

National Electricity Transmission System Status Report
Friday 09 June 2023

Today's High Level Risk Status Forecast for the next 24h			
General Status		Voltage	
Demand		System Inertia	
System Margins		Weather	
Generation		Transmission	
Active Constraints			
System Warning			

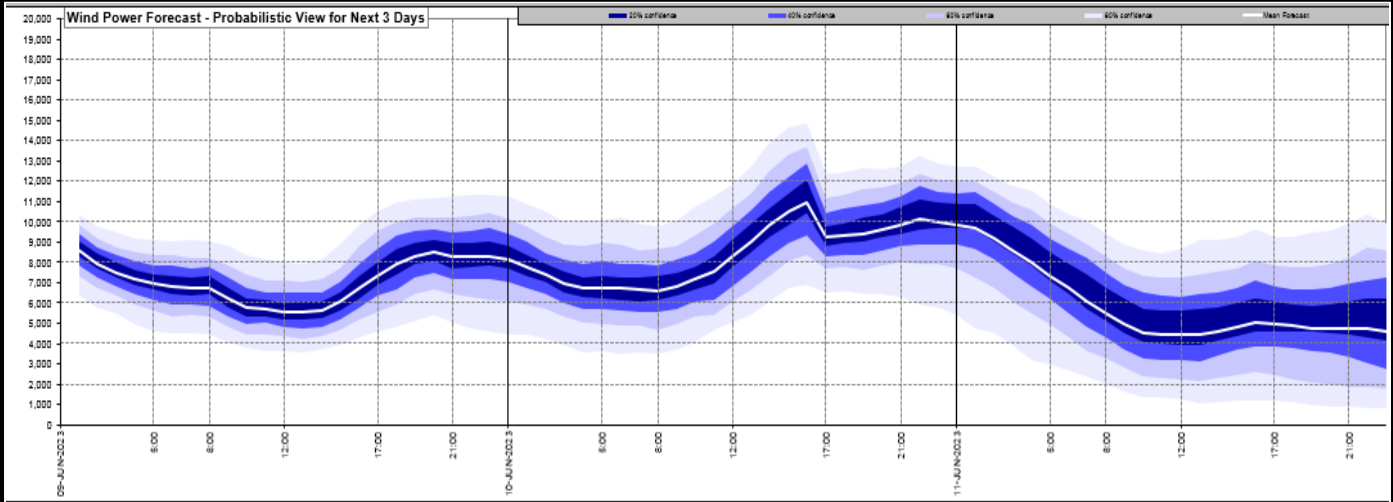
Today's Minimum De-Rated Margin	8,244 (SP 48)	
Current BMU Largest Loss Risk	Generation	1400 MW
	Demand	560 MW



Yesterday's Market Summary	
Cash Out Price (Max)	£125,00 (SP26)
Cash Out Price (Min)	£12.00 (SP1)
Peak Demand Yesterday	28,889 MW
Minimum Demand	17,398 MW

Interconnector Net Transfer Capacity (MWs)			
Today	Import	Export	Remarks
Netherlands (BritNed)	1100	1130	Fully Available
France (IFA)	1000	1000	Partially Available
Belgium (Nemo)	1000	1000	Fully Available
Ireland (EWIC)	500	530	Fully Available
France (ElecLink)	1014	1014	Fully Available
Northern Ireland (MOYLE)	500	500	Fully Available
Norway (NSL)	712	712	Partially Available
France (IFA2)	1014	1014	Fully Available

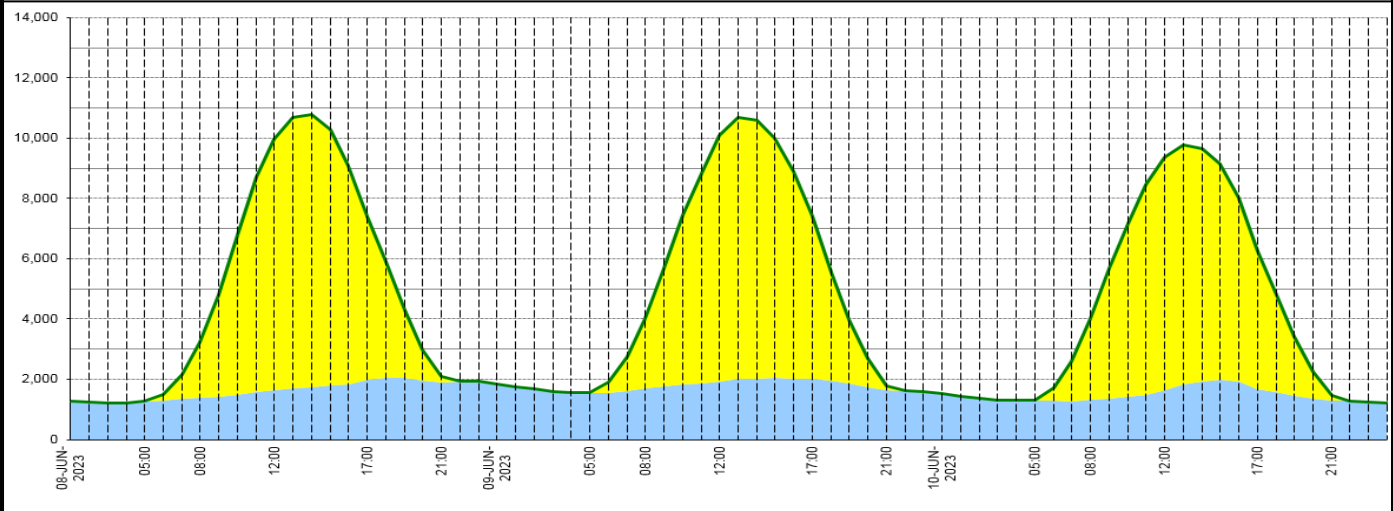
Wind Power Forecast



Expected embedded generation (MWs)

Embedded Generation Forecast

	08-JUN-2023					09-JUN-2023					10-JUN-2023						
	05:00	08:00	12:00	17:00	21:00	00:00	05:00	08:00	12:00	17:00	21:00	00:00	05:00	08:00	12:00	17:00	21:00
Solar (MW)	0	1848	8319	5420	210	0	0	2330	8150	5380	157	0	0	2708	7710	4556	181
Wind (MW)	1265	1374	1653	1989	1875	1847	1548	1696	1931	2030	1624	1534	1293	1313	1648	1685	1294
STOR (MW)	0	0	0	0	0	0	0	0	0	0	0	0	0	0	0	0	0
Total (MW)	1265	3222	9972	7409	2085	1847	1548	4026	10081	7410	1781	1534	1293	4021	9358	6241	1475



Weather	Source	Commentary
Latest forecast (Summary)	Met Office SEPA Natural Resources Wales	<p>Today: Low cloud across northern and eastern parts will gradually burn back towards the coast through the day. Plenty of sunshine elsewhere, but the risk of a few heavy showers across southwest England. Feeling warm in the sunshine.</p> <p>Tonight: The continued risk of a few sharp showers across southwest England. Dry elsewhere, with some low cloud spreading back inland from the North Sea overnight.</p>
General Weather Concerns e.g. wind, rain, snow, flooding, GB Weather Warnings	Met Office Weather Warnings SEPA Natural Resources Wales	<p>UK Weather Warnings Yellow warning of thunderstorms Areas affected: East Midlands East of England London & South East England North West England South West England Wales West Midlands</p> <p>Starts: 14:00 BST on Sat 10 June Ends: 21:00 BST on Sat 10 June Whilst many places will be largely dry, thunderstorms with heavy rain and hail are likely to develop in some places on Saturday afternoon.</p> <p>- There is a small chance that homes and businesses could be flooded quickly, with damage to some buildings from floodwater, lightning strikes, hail or strong winds</p>

Weather	Source	Commentary
		<ul style="list-style-type: none"> - Spray and sudden flooding could lead to difficult driving conditions and some road closures - Where flooding or lightning strikes occur, there is a chance of delays and possibly even cancellations to rail services - There is a slight chance that power cuts could occur and other services to some homes and businesses could be temporarily lost
		<p>Flood Warnings</p> <p>0 flood warnings and 0 flood alerts issued for England.</p> <p>0 flood warnings and 0 flood alerts issued for Scotland.</p> <p>0 flood warnings and 0 flood alerts issued for Wales.</p>

Contains public sector information licensed under the Open Government Licence v1.0

Further Information	
BM Reports	https://www.bmreports.com
System Balancing Reports	https://www.nationalgrideso.com/balancing-data/system-balancing-reports
Forecast Volumes and Costs	https://www.nationalgrideso.com/balancing-data/forecast-volumes-and-costs
NGESO Insights	https://www.nationalgrideso.com/insights