

# National Electricity Transmission System Status Report

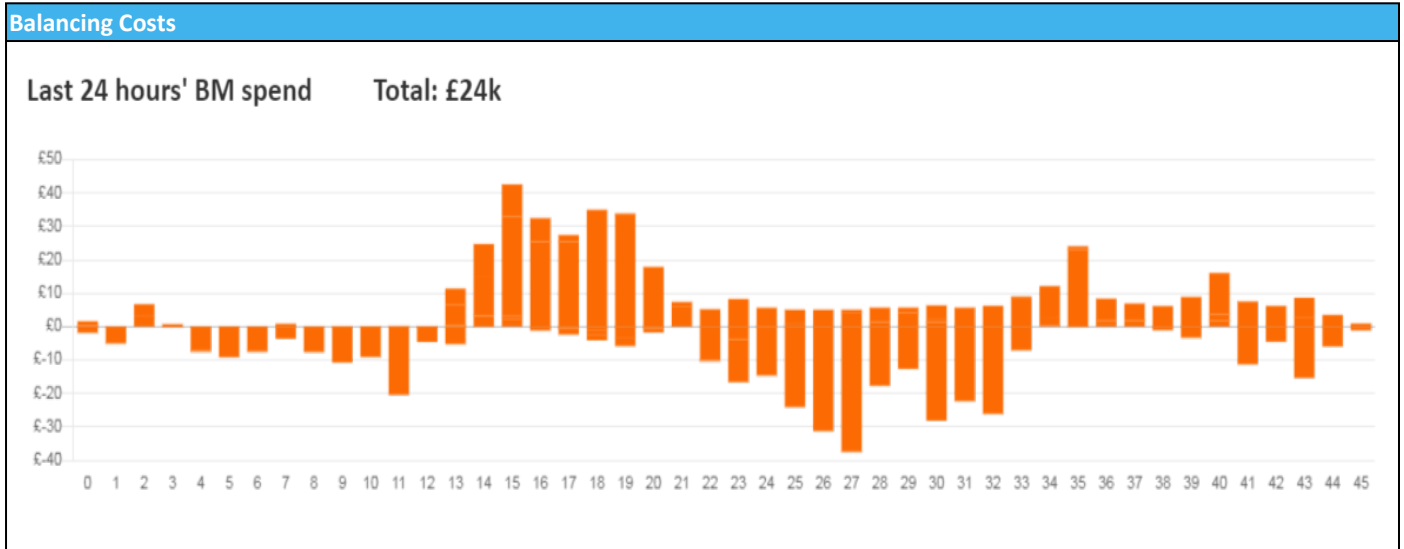


nationalgridESO

National Electricity Transmission System Status Report  
Thursday 08 June 2023

Today's High Level Risk Status Forecast for the next 24h			
General Status		Voltage	
Demand		System Inertia	
System Margins		Weather	
Generation		Transmission	
Active Constraints			
<a href="#">System Warning</a>			

<a href="#">Today's Minimum De-Rated Margin</a>	8,061 (SP 15)	
Current BMU Largest Loss Risk	Generation	1400 MW
	Demand	560 MW



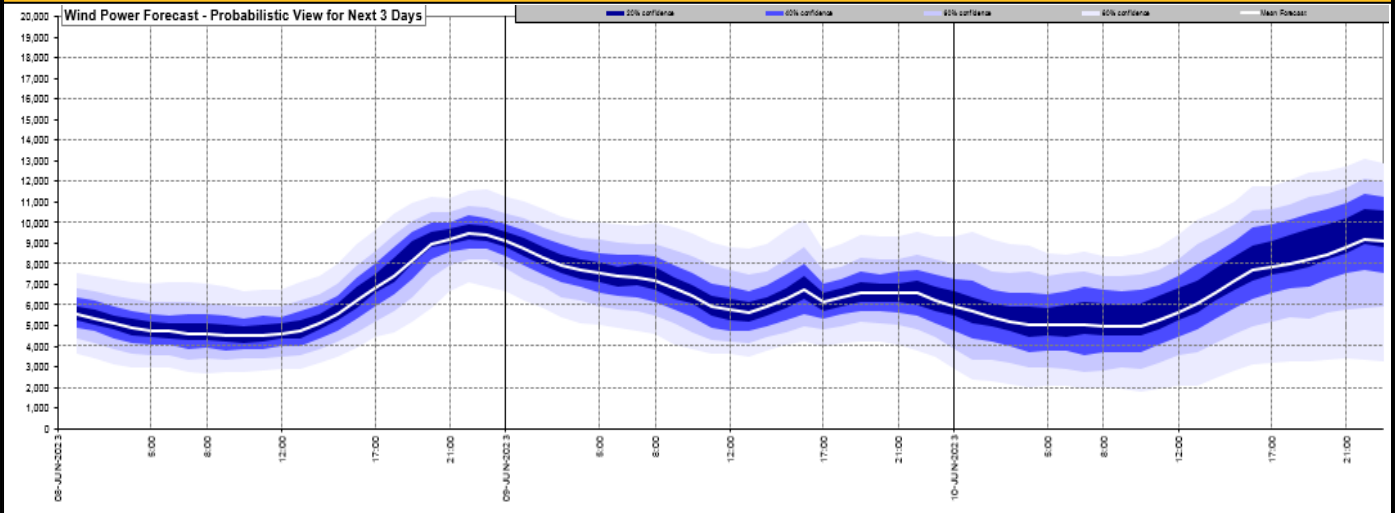
**Yesterday's Market Summary**

<a href="#">Cash Out Price (Max)</a>	£136.00 (SP20-21)
<a href="#">Cash Out Price (Min)</a>	£10.00 (SP26)
<a href="#">Peak Demand Yesterday</a>	28,577 MW
Minimum Demand	18,239 MW

**Interconnector Net Transfer Capacity (MWs)**

Today	Import	Export	Remarks
Netherlands (BritNed)	1100	1130	Fully Available
France (IFA)	1000	1000	Partially Available
Belgium (Nemo)	1000	1000	Fully Available
Ireland (EWIC)	500	530	Fully Available
France (ElecLink)	1014	1014	Fully Available
Northern Ireland (MOYLE)	500	500	Fully Available
Norway (NSL)	1424	1424	Fully Available
France (IFA2)	1014	1014	Fully Available

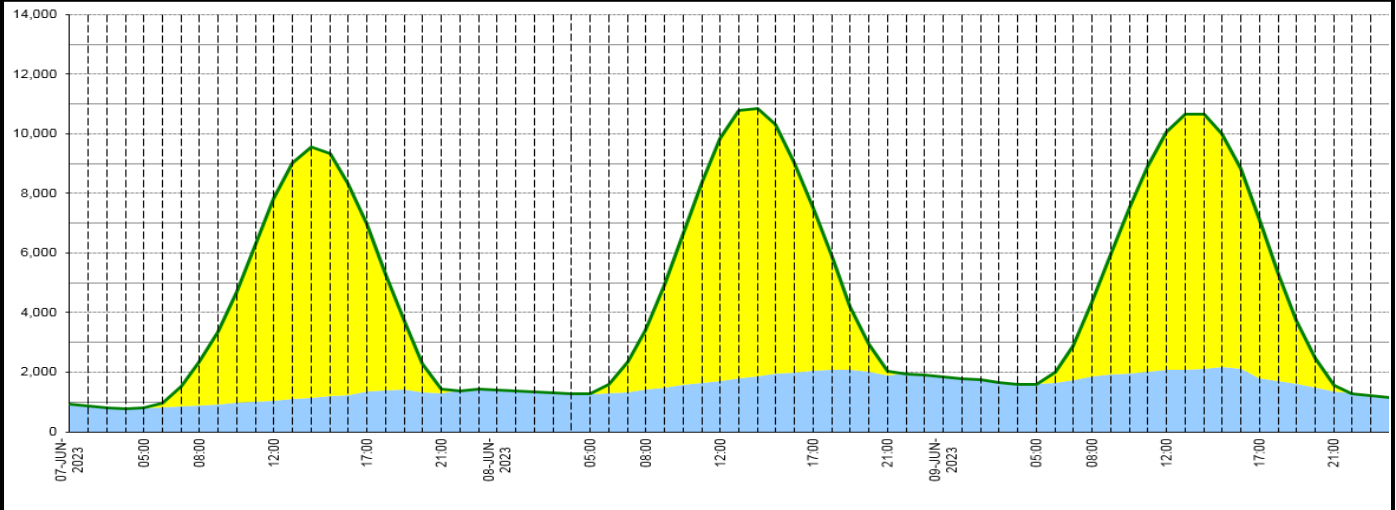
**Wind Power Forecast**



**Expected embedded generation (MWs)**

**Embedded Generation Forecast**

	07-JUN-2023					08-JUN-2023					09-JUN-2023						
	05:00	08:00	12:00	17:00	21:00	00:00	05:00	08:00	12:00	17:00	21:00	00:00	05:00	08:00	12:00	17:00	21:00
Solar (MW)	0	1452	6771	5620	147	0	0	2006	8109	5443	149	0	0	2500	7985	5297	188
Wind (MW)	789	882	1049	1354	1294	1391	1266	1417	1715	2060	1888	1829	1601	1857	2082	1791	1368
STOR (MW)	0	0	0	0	0	0	0	0	0	0	0	0	0	0	0	0	0
<b>Total (MW)</b>	<b>789</b>	<b>2334</b>	<b>7820</b>	<b>6974</b>	<b>1441</b>	<b>1391</b>	<b>1266</b>	<b>3423</b>	<b>9824</b>	<b>7503</b>	<b>2037</b>	<b>1829</b>	<b>1601</b>	<b>4357</b>	<b>10067</b>	<b>7088</b>	<b>1556</b>



Weather	Source	Commentary
Latest forecast (Summary)	<a href="#">Met Office</a> <a href="#">SEPA</a> <a href="#">Natural Resources Wales</a>	<p><b>Today:</b> Remaining settled on Thursday with overnight low cloud gradually burning back to northeastern coasts to leave a warm and sunny day for many. Increasingly windy for southern and southwestern areas.</p> <p><b>Tonight:</b> Cloud in the east will again expand westwards into central area of England and Scotland overnight. Long clear periods in the west before cloud increases from the southwest later.</p>
General Weather Concerns e.g. wind, rain, snow, flooding, GB Weather Warnings	<a href="#">Met Office</a> <a href="#">Weather Warnings</a> <a href="#">SEPA</a> <a href="#">Natural Resources Wales</a>	<p><b>UK Weather Warnings</b> No weather warnings are in force for the UK.</p> <p><b>Flood Warnings</b> 0 flood warnings and 0 flood alerts issued for England.</p>

Weather	Source	Commentary
		<p>0 flood warnings and 0 flood alerts issued for Scotland.</p> <p>0 flood warnings and 0 flood alerts issued for Wales.</p>

*Contains public sector information licensed under the Open Government Licence v1.0*

Further Information	
BM Reports	<a href="https://www.bmreports.com">https://www.bmreports.com</a>
System Balancing Reports	<a href="https://www.nationalgrideso.com/balancing-data/system-balancing-reports">https://www.nationalgrideso.com/balancing-data/system-balancing-reports</a>
Forecast Volumes and Costs	<a href="https://www.nationalgrideso.com/balancing-data/forecast-volumes-and-costs">https://www.nationalgrideso.com/balancing-data/forecast-volumes-and-costs</a>
NGESO Insights	<a href="https://www.nationalgrideso.com/insights">https://www.nationalgrideso.com/insights</a>