

# National Electricity Transmission System Status Report

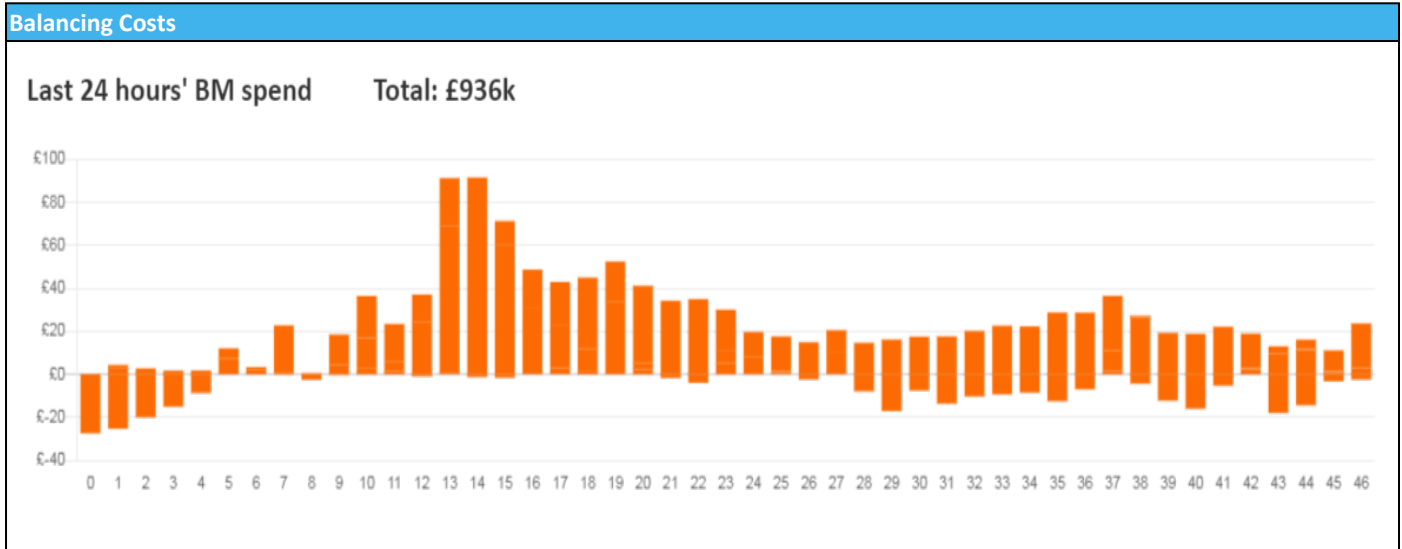


nationalgridESO

National Electricity Transmission System Status Report  
Saturday 20 May 2023

| Today's High Level Risk Status Forecast for the next 24h |  |                |  |
|--|--|----------------|--|
| General Status   |  | Voltage        |  |
| Demand   |  | System Inertia |  |
| System Margins   |  | Weather        |  |
| Generation   |  | Transmission   |  |
| Active Constraints                                       |  |                |  |
| <a href="#">System Warning</a>                           |  |                |  |

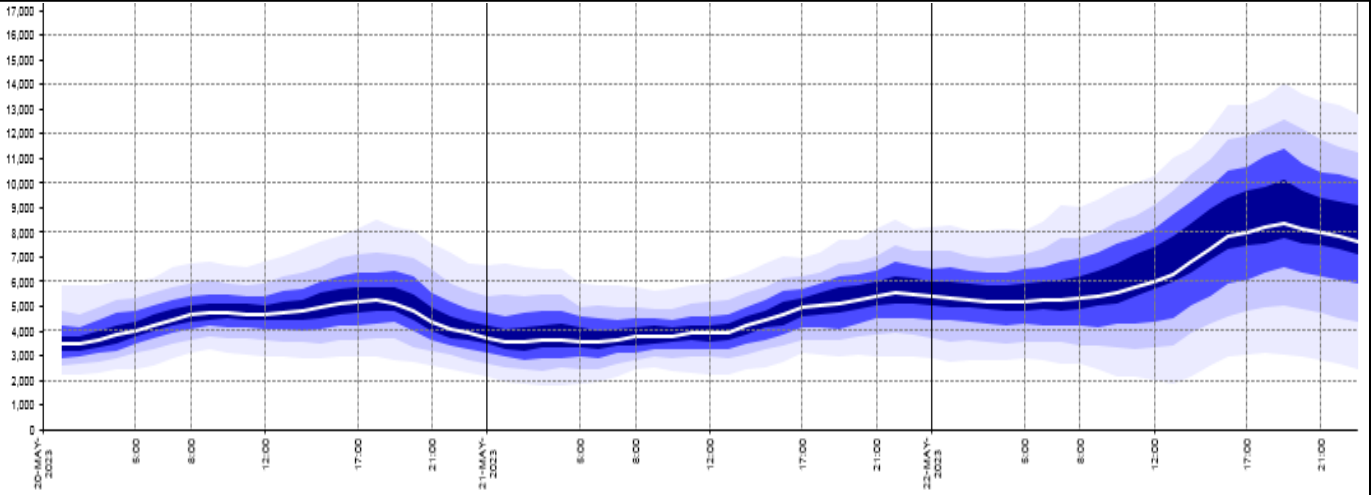
|   |               |         |
|---|---------------|---------|
| <a href="#">Today's Minimum De-Rated Margin</a> | 6,360 (SP 48) |         |
| Current BMU Largest Loss Risk                   | Generation    | 1400 MW |
|   | Demand        | 560 MW  |



| Yesterday's Market Summary            |                    |
|---------------------------------------|--------------------|
| <a href="#">Cash Out Price (Max)</a>  | £135.00 (SP 16,17) |
| <a href="#">Cash Out Price (Min)</a>  | £ 56.00 (SP 2,3)   |
| <a href="#">Peak Demand Yesterday</a> | 29,605 MW          |
| Minimum Demand                        | 18,266 MW          |

| Interconnector<br>Net Transfer Capacity (MWs) |        |        |                 |
|---|--------|--------|-----------------|
| Today   | Import | Export | Remarks         |
| Netherlands (BritNed)                         | 1100   | 1133   | Fully Available |
| France (IFA)                                  | 2000   | 2000   | Fully Available |
| Belgium (Nemo)                                | 1000   | 1000   | Fully Available |
| Ireland (EWIC)                                | 500    | 530    | Fully Available |
| France (ElecLink)                             | 1014   | 1014   | Fully Available |
| Northern Ireland (MOYLE)                      | 500    | 500    | Fully Available |
| Norway (NSL)                                  | 1424   | 1424   | Fully Available |
| France (IFA2)                                 | 1014   | 1014   | Fully Available |

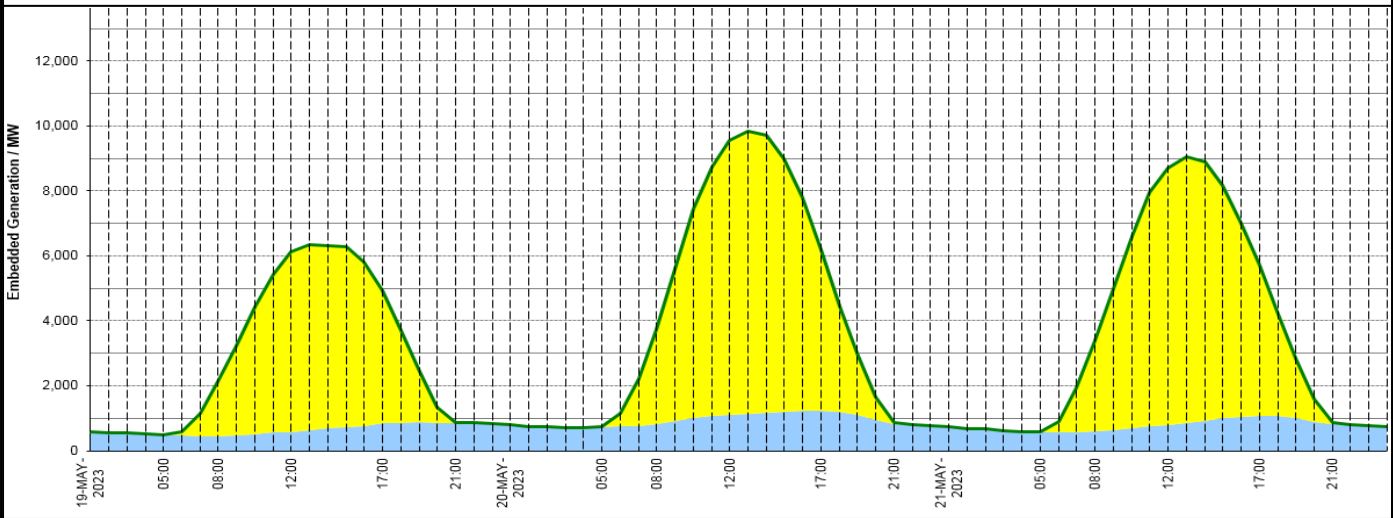
**Wind Power Forecast**



**Expected embedded generation (MWs)**

**Embedded Generation Forecast**

|                   | 19-MAY-2023 |             |             |             |            | 20-MAY-2023 |            |             |             |             | 21-MAY-2023 |            |            |             |             |             |            |
|-------------------|-------------|-------------|-------------|-------------|------------|-------------|------------|-------------|-------------|-------------|-------------|------------|------------|-------------|-------------|-------------|------------|
|                   | 05:00       | 08:00       | 12:00       | 17:00       | 21:00      | 00:00       | 05:00      | 08:00       | 12:00       | 17:00       | 21:00       | 00:00      | 05:00      | 08:00       | 12:00       | 17:00       | 21:00      |
| Solar (MW)        | 0           | 1692        | 5558        | 4074        | 13         | 0           | 0          | 2905        | 8468        | 4970        | 39          | 0          | 0          | 2799        | 7928        | 4620        | 55         |
| Wind (MW)         | 502         | 438         | 577         | 847         | 852        | 808         | 726        | 832         | 1088        | 1227        | 834         | 735        | 569        | 596         | 789         | 1080        | 818        |
| STOR (MW)         | 0           | 0           | 0           | 0           | 0          | 0           | 0          | 0           | 0           | 0           | 0           | 0          | 0          | 0           | 0           | 0           | 0          |
| <b>Total (MW)</b> | <b>502</b>  | <b>2130</b> | <b>6135</b> | <b>4921</b> | <b>865</b> | <b>808</b>  | <b>726</b> | <b>3737</b> | <b>9556</b> | <b>6197</b> | <b>873</b>  | <b>735</b> | <b>569</b> | <b>3395</b> | <b>8717</b> | <b>5700</b> | <b>873</b> |



| Weather  | Source  | Commentary  |
|--|---|---|
| Latest forecast (Summary)  | <a href="#">Met Office</a><br><a href="#">SEPA</a><br><a href="#">Natural Resources Wales</a>                                     | <p><b>Today:</b><br/>Rather cloudy for Scotland and Northern Ireland, with patchy rain moving southeastwards. Dry and bright for England and Wales, with some warm spells of sunshine. Winds remaining light</p> <p><b>Tonight:</b><br/>Showers easing for many this evening to leave a fine end to the day. Largely dry overnight, with clear spells allowing for some localized mist and fog patches to develop. Thicker cloud and patchy rain will affect northern Scotland.</p> |
| General Weather Concerns<br>e.g. wind, rain, snow, flooding, GB Weather Warnings | <a href="#">Met Office</a><br><a href="#">Weather Warnings</a><br><a href="#">SEPA</a><br><a href="#">Natural Resources Wales</a> | <p><b>UK Weather Warnings</b><br/>No weather warnings are in force for the UK</p> <hr/> <p><b>Flood Warnings</b><br/>0 flood warnings and 1 flood alerts issued for England.<br/>0 flood warnings and 0 flood alerts issued for Scotland.<br/>0 flood warnings and 0 flood alerts issued for Wales.</p>   |

| Weather | Source | Commentary |
|---------|--------|------------|
|         |        |            |

*Contains public sector information licensed under the Open Government Licence v1.0*

| Further Information        |   |
|----------------------------|---|
| BM Reports                 | <a href="https://www.bmreports.com">https://www.bmreports.com</a>   |
| System Balancing Reports   | <a href="https://www.nationalgrideso.com/balancing-data/system-balancing-reports">https://www.nationalgrideso.com/balancing-data/system-balancing-reports</a>     |
| Forecast Volumes and Costs | <a href="https://www.nationalgrideso.com/balancing-data/forecast-volumes-and-costs">https://www.nationalgrideso.com/balancing-data/forecast-volumes-and-costs</a> |
| NGESO Insights             | <a href="https://www.nationalgrideso.com/insights">https://www.nationalgrideso.com/insights</a>   |