

**National Electricity  
Transmission System Status Report**

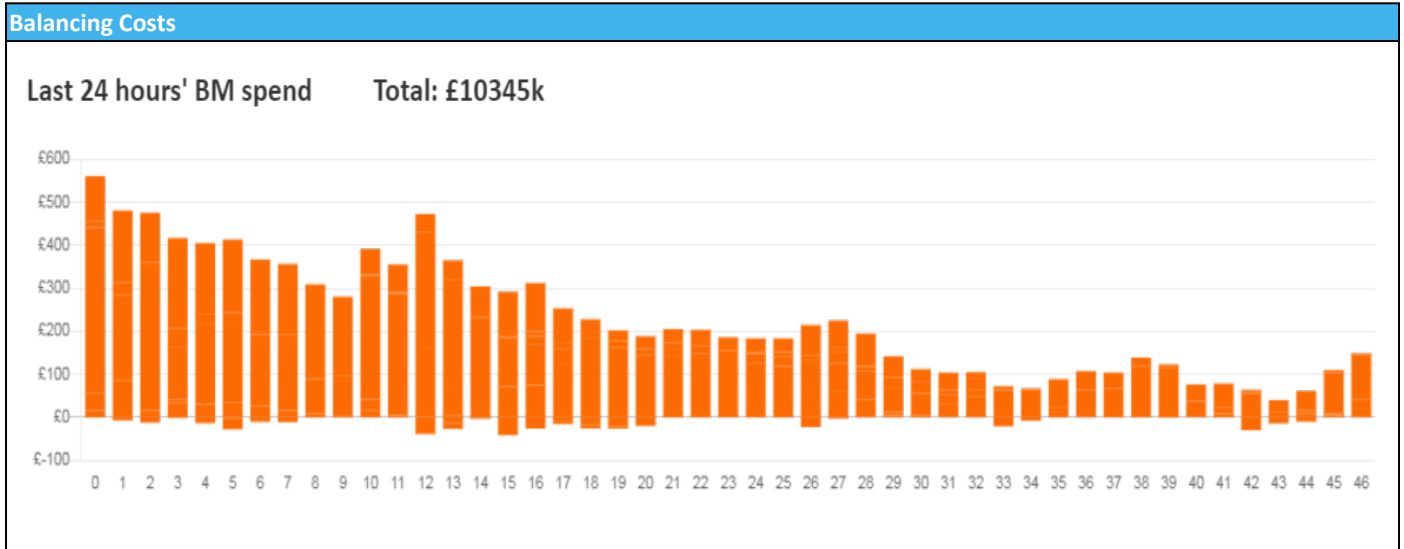


national**grid**ESO

National Electricity Transmission System Status Report  
Saturday 18 February 2023

Today's High Level Risk Status Forecast for the next 24h			
General Status		Voltage	
Demand		System Inertia	
System Margins		Weather	
Generation		Transmission	
Active Constraints			
<a href="#">System Warning</a>			

<a href="#">Today's Minimum De-Rated Margin</a>	6,378 (SP 36)	
Current BMU Largest Loss Risk	Generation	1500 MW
	Demand	560 MW



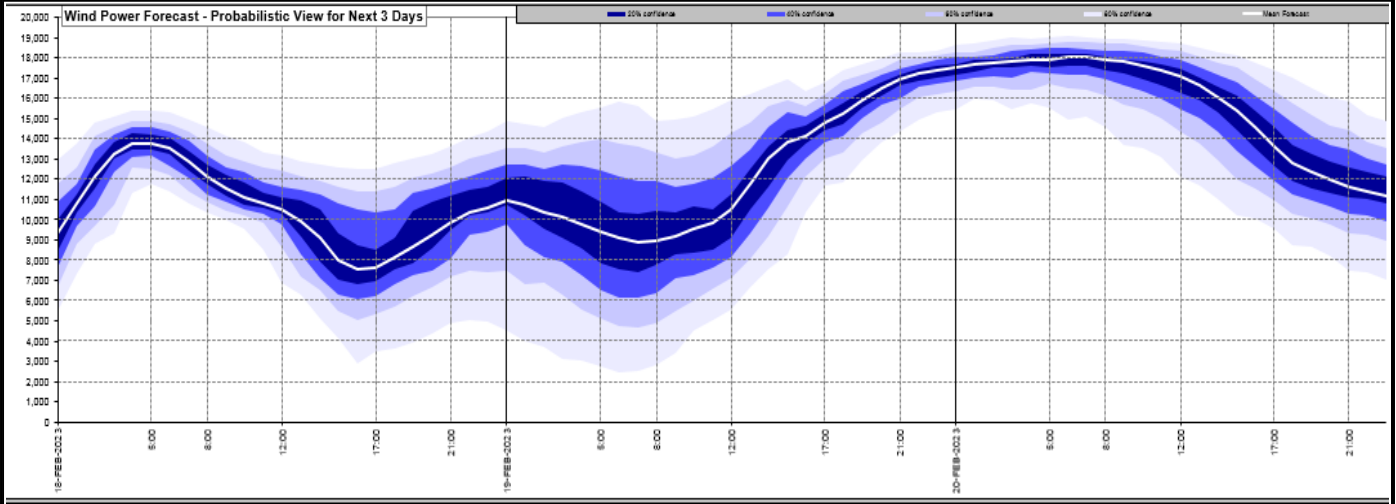
**Yesterday's Market Summary**

<a href="#">Cash Out Price (Max)</a>	£179.90 (SP34, SP38, SP40 & SP41))
<a href="#">Cash Out Price (Min)</a>	£0.00 (SP10, SP11 & SP20 - SP27))
<a href="#">Peak Demand Yesterday</a>	36,445 MW
Minimum Demand	17,590 MW

**Interconnector Net Transfer Capacity (MWs)**

Today	Import	Export	Remarks
Netherlands (BritNed)	1100	1133	Fully Available
France (IFA)	2000	2000	Fully Available
Belgium (Nemo)	1000	1000	Fully Available
Ireland (EWIC)	500	530	Fully Available
France (ElecLink)	1014	1014	Fully Available
Northern Ireland (MOYLE)	500	500	Fully Available
Norway (NSL)	1400	1400	Fully Available
France (IFA2)	1014	1014	Fully Available

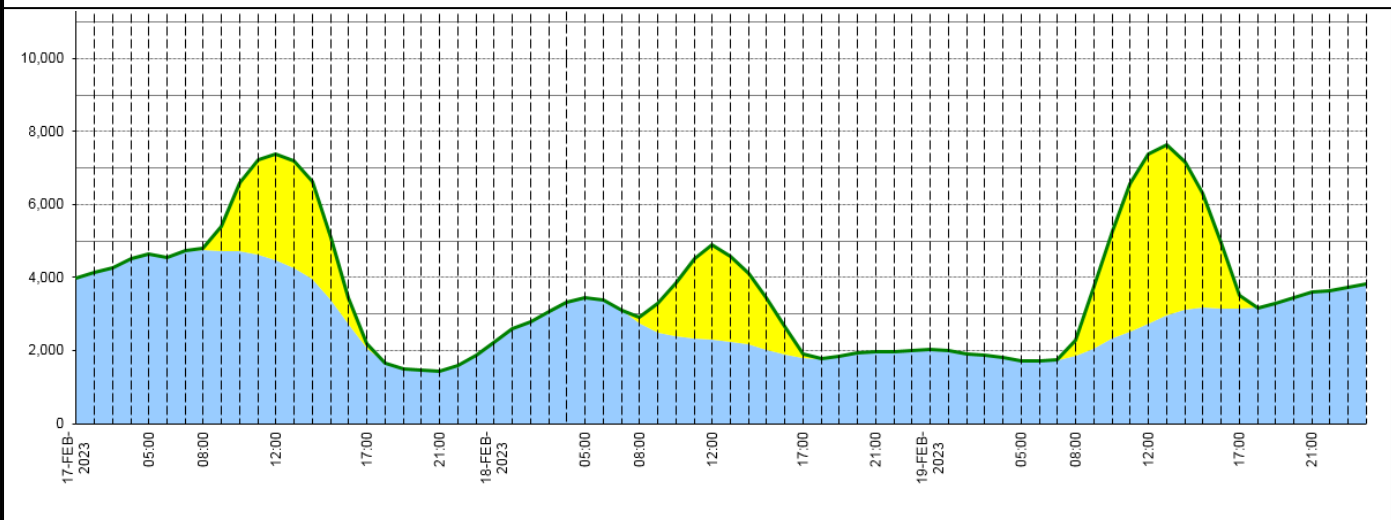
**Wind Power Forecast**



**Expected embedded generation (MWs)**

**Embedded Generation Forecast**

	17-FEB-2023					18-FEB-2023					19-FEB-2023						
	05:00	08:00	12:00	17:00	21:00	00:00	05:00	08:00	12:00	17:00	21:00	00:00	05:00	08:00	12:00	17:00	21:00
Solar (MW)	0	53	2901	121	0	0	0	173	2585	100	0	0	0	429	4638	350	0
Wind (MW)	4632	4750	4484	2062	1446	2233	3446	2728	2297	1800	1954	2027	1728	1859	2751	3159	3591
STOR (MW)	0	0	0	0	0	0	0	0	0	0	0	0	0	0	0	0	0
<b>Total (MW)</b>	<b>4632</b>	<b>4803</b>	<b>7385</b>	<b>2183</b>	<b>1446</b>	<b>2233</b>	<b>3446</b>	<b>2901</b>	<b>4882</b>	<b>1900</b>	<b>1954</b>	<b>2027</b>	<b>1728</b>	<b>2288</b>	<b>7389</b>	<b>3509</b>	<b>3591</b>



Weather	Source	Commentary
Latest forecast (Summary)	<a href="#">Met Office</a> <a href="#">SEPA</a> <a href="#">Natural Resources Wales</a>	<p><b>Today:</b> Very mild in south with rain or drizzle slowly clearing, leaving sunny intervals. Cloudier across Northern Ireland, parts of Scotland and northern England with occasional rain and also hill snow in north. Sunny spells and isolated showers far north.</p> <p><b>Tonight:</b> Rain and hill snow over Scotland and northeast England clearing, with a frost in places in the north. Mostly dry with clear intervals in south. Rain in northwest later.</p>
General Weather Concerns e.g. wind, rain, snow, flooding, GB Weather Warnings	<a href="#">Met Office</a> <a href="#">Weather Warnings</a> <a href="#">SEPA</a> <a href="#">Natural Resources Wales</a>	<p><b>UK Weather Warnings</b> Yellow warning of snow and ice: Areas affected: Central, Tayside &amp; Fife   Grampian   Highlands &amp; Eilean Siar   Strathclyde ACTIVE Started at: 23:00 GMT on Fri 17 February Ends: 09:00 GMT on Sat 18 February Ice and snow may lead to some travel disruption across parts of Scotland on Saturday morning, mostly on high level routes.</p> <p><b>Flood Warnings</b> 0 flood warnings and 5 flood alerts issued for England.</p>

Weather	Source	Commentary
		<p>No flood warnings are currently in force for Scotland.</p> <p>No flood warnings are currently in force for Wales.</p>

*Contains public sector information licensed under the Open Government Licence v1.0*

Further Information	
BM Reports	<a href="https://www.bmreports.com">https://www.bmreports.com</a>
System Balancing Reports	<a href="https://www.nationalgrideso.com/balancing-data/system-balancing-reports">https://www.nationalgrideso.com/balancing-data/system-balancing-reports</a>
Forecast Volumes and Costs	<a href="https://www.nationalgrideso.com/balancing-data/forecast-volumes-and-costs">https://www.nationalgrideso.com/balancing-data/forecast-volumes-and-costs</a>
NGESO Insights	<a href="https://www.nationalgrideso.com/insights">https://www.nationalgrideso.com/insights</a>