

National Electricity Transmission System Status Report

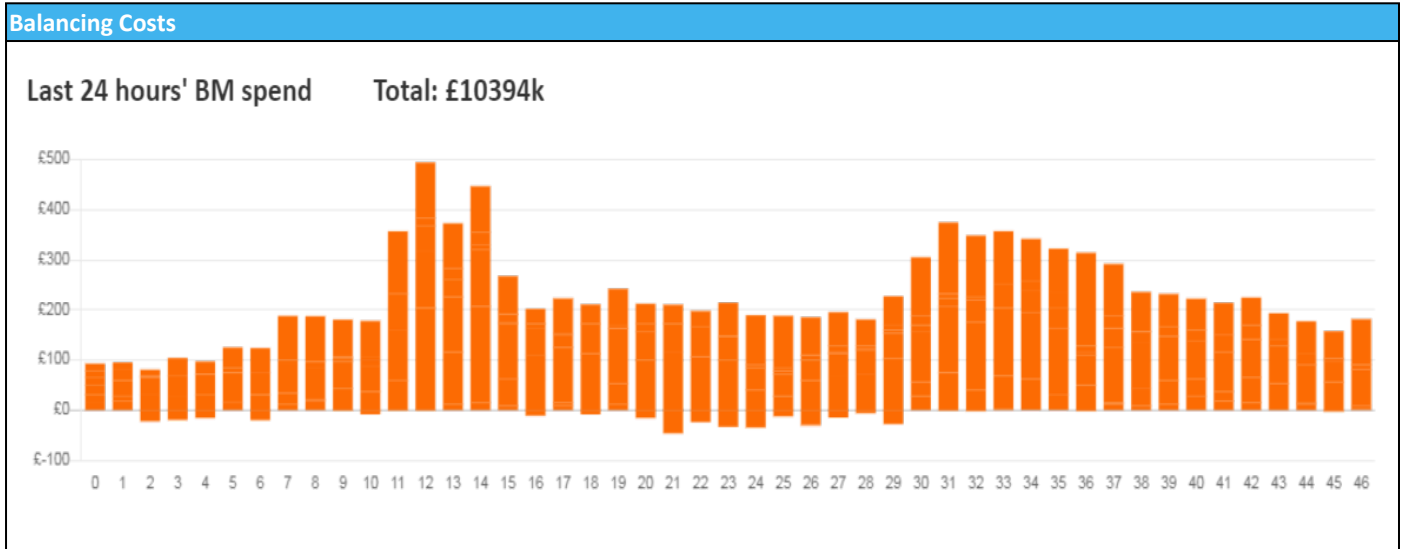


nationalgridESO

National Electricity Transmission System Status Report
Thursday 09 February 2023

Today's High Level Risk Status Forecast for the next 24h			
General Status		Voltage	
Demand		System Inertia	
System Margins		Weather	
Generation		Transmission	
Active Constraints			
System Warning			

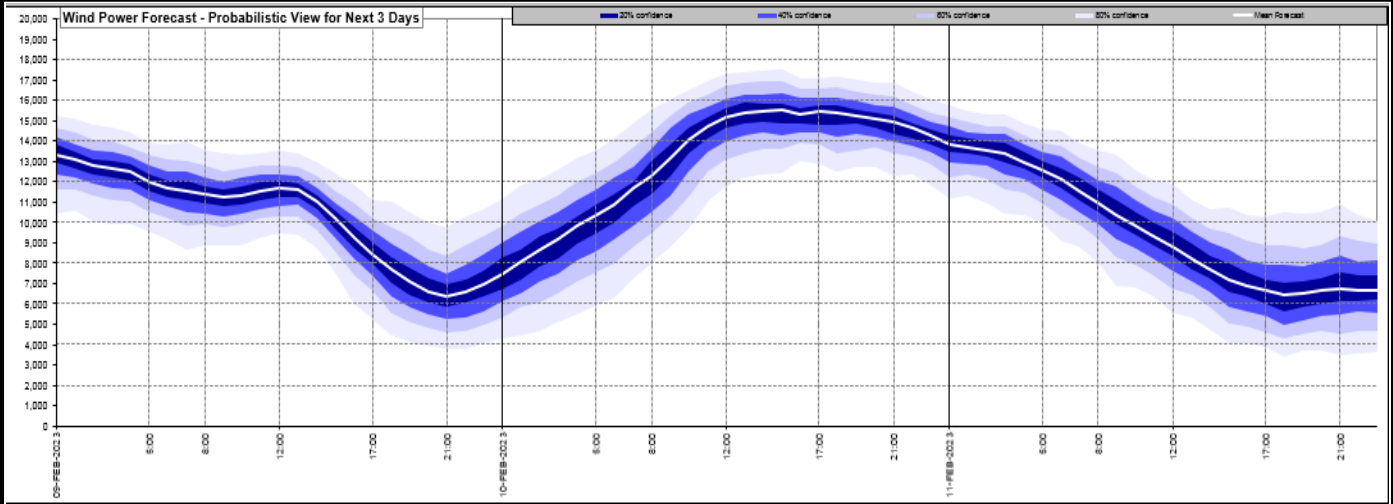
Today's Minimum De-Rated Margin	4992 (SP38)	
Current BMU Largest Loss Risk	Generation	1400 MW
	Demand	750 MW



Yesterday's Market Summary	
Cash Out Price (Max)	£230.00 (SP33 - SP37)
Cash Out Price (Min)	£83.50 (SP28)
Peak Demand Yesterday	42,545 MW
Minimum Demand	23,000 MW

Interconnector Net Transfer Capacity (MWs)			
Today	Import	Export	Remarks
Netherlands (BritNed)	1100	1133	Fully Available
France (IFA)	1500	1500	Partially Available
Belgium (Nemo)	0	0	Outage until 22:00 10/2/23
Ireland (EWIC)	500	530	Fully Available
France (ElecLink)	1014	1014	Fully Available
Northern Ireland (MOYLE)	500	500	Fully Available
Norway (NSL)	1400	1400	Fully Available
France (IFA2)	1014	1014	Fully Available

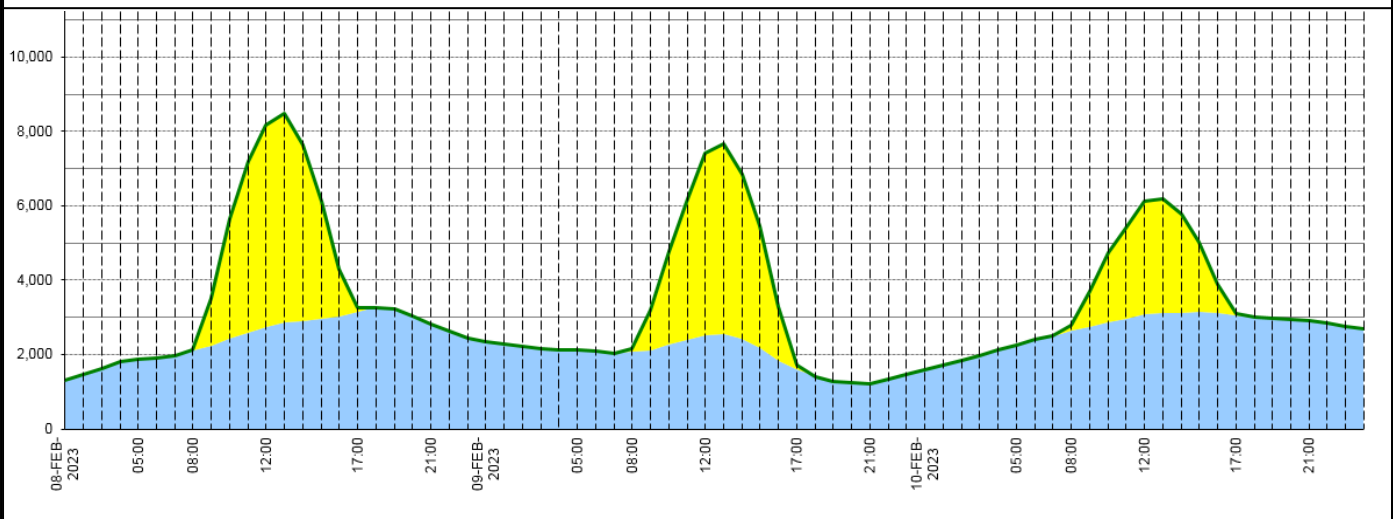
Wind Power Forecast



Expected embedded generation (MWs)

Embedded Generation Forecast

	08-FEB-2023					09-FEB-2023					10-FEB-2023						
	05:00	08:00	12:00	17:00	21:00	00:00	05:00	08:00	12:00	17:00	21:00	00:00	05:00	08:00	12:00	17:00	21:00
Solar (MW)	0	22	5432	84	0	0	0	74	4896	131	0	0	0	157	3043	51	0
Wind (MW)	1881	2097	2741	3163	2825	2342	2120	2077	2526	1597	1220	1585	2260	2638	3093	3056	2911
STOR (MW)	0	0	0	0	0	0	0	0	0	0	0	0	0	0	0	0	0
Total (MW)	1881	2119	8173	3247	2825	2342	2120	2151	7422	1728	1220	1585	2260	2795	6136	3107	2911



Weather	Source	Commentary
Latest forecast (Summary)	Met Office SEPA Natural Resources Wales	<p>Today: Band of cloud and occasional rain or drizzle clearing from southern England later in the morning, then most central and southern areas dry with sunny spells. Showers in northwest and north, frequent and wintry in far north where very windy.</p> <p>Tonight: Fine and dry in the south with a widespread sharp frost. Some showers in the far north, then clouding over with occasional rain in the northwest and north.</p>
General Weather Concerns e.g. wind, rain, snow,	Met Office Weather Warnings	<p>UK Weather Warnings Yellow warning of snow and ice: Areas affected: Central, Tayside & Fife Grampian Highlands & Eilean Siar </p>

Weather	Source	Commentary
flooding, GB Weather Warnings	SEPA Natural Resources Wales	Strathclyde ACTIVE: Started at: 16:00 GMT on Wed 8 February Ends: 09:00 GMT on Thu 9 February Snow and ice may lead to difficult travel conditions.
		Flood Warnings 0 flood warnings and 8 flood alerts issued for England. 1 flood warning and 0 flood alerts issued for Scotland. 0 flood warnings and 0 flood alerts issued for Wales.

Contains public sector information licensed under the Open Government Licence v1.0

Further Information	
BM Reports	https://www.bmreports.com
System Balancing Reports	https://www.nationalgrideso.com/balancing-data/system-balancing-reports
Forecast Volumes and Costs	https://www.nationalgrideso.com/balancing-data/forecast-volumes-and-costs
NGESO Insights	https://www.nationalgrideso.com/insights