

**National Electricity
Transmission System Status Report**

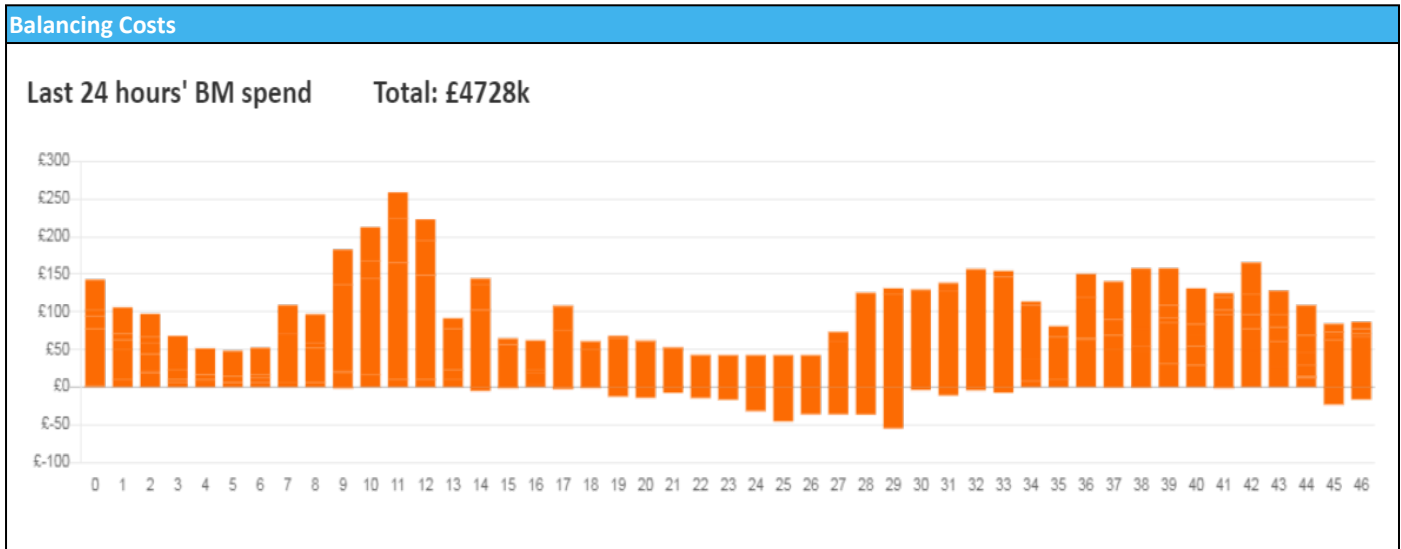


national**grid**ESO

National Electricity Transmission System Status Report
Wednesday 08 February 2023

Today's High Level Risk Status Forecast for the next 24h			
General Status		Voltage	
Demand		System Inertia	
System Margins		Weather	
Generation		Transmission	
Active Constraints			
System Warning			

Today's Minimum De-Rated Margin	11,420 (SP 17)	
Current BMU Largest Loss Risk	Generation	1400 MW
	Demand	560 MW



Yesterday's Market Summary

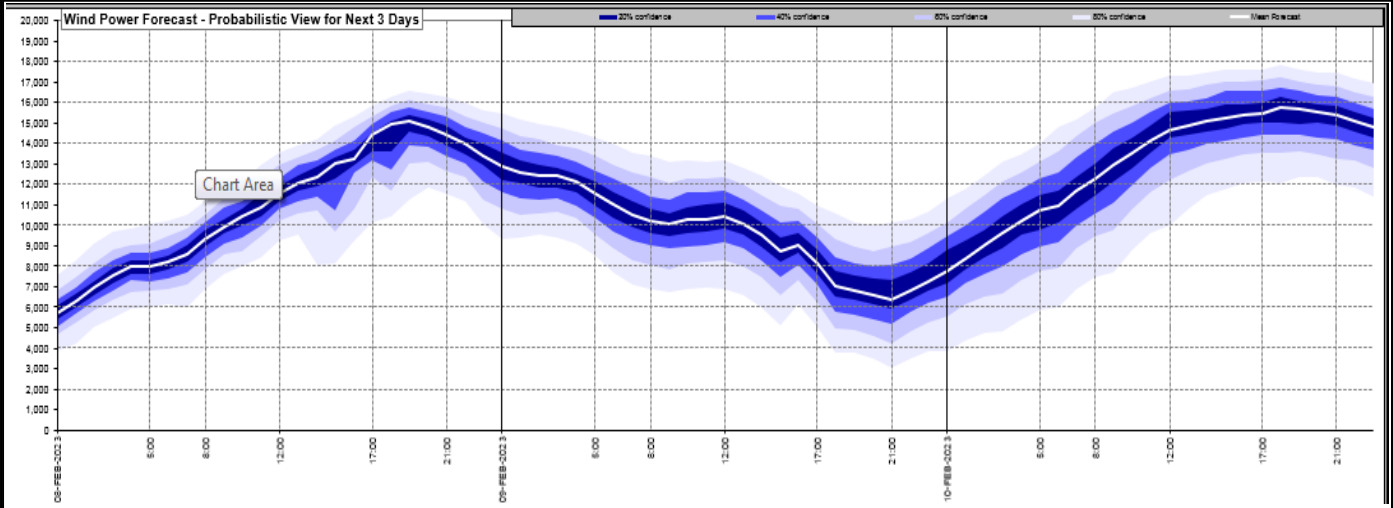
Cash Out Price (Max)	£282.00 (SP36 - SP39)
Cash Out Price (Min)	£91.25 (SP22)
Peak Demand Yesterday	42,264 MW
Minimum Demand	23,650 MW

Interconnector

Net Transfer Capacity (MWs)

Today	Import	Export	Remarks
Netherlands (BritNed)	1100	1133	Fully Available
France (IFA2)	1014	1014	Fully Available
Belgium (Nemo)	0	0	Not Available - Outage
Ireland (EWIC)	500	530	Fully Available
France (ElecLink)	1014	1014	Fully Available
France (IFA)	2000	2000	Fully Available
Northern Ireland (MOYLE)	500	500	Fully Available
Norway (NSL)	1400	1400	Fully Available

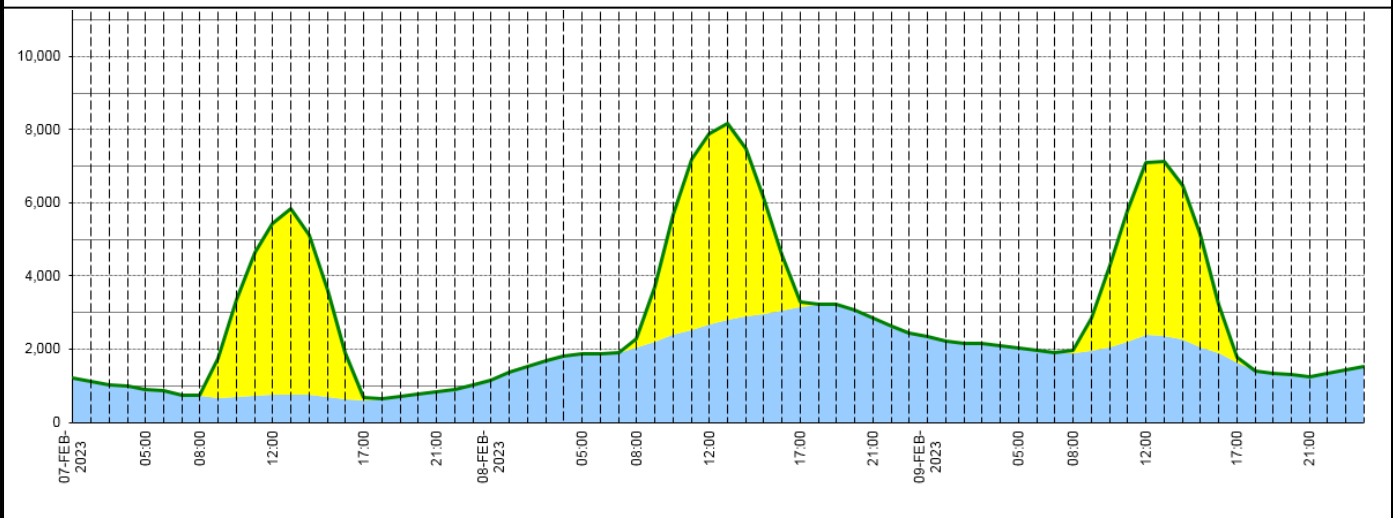
Wind Power Forecast



Expected embedded generation (MWs)

Embedded Generation Forecast

	07-FEB-2023					08-FEB-2023					09-FEB-2023						
	05:00	08:00	12:00	17:00	21:00	00:00	05:00	08:00	12:00	17:00	21:00	00:00	05:00	08:00	12:00	17:00	21:00
Solar (MW)	0	12	4680	77	0	0	0	230	5232	152	0	0	0	74	4713	141	0
Wind (MW)	909	718	754	605	825	1163	1863	2041	2664	3138	2852	2344	2028	1899	2383	1651	1244
STOR (MW)	0	0	0	0	0	0	0	0	0	0	0	0	0	0	0	0	0
Total (MW)	909	730	5434	682	825	1163	1863	2271	7896	3290	2852	2344	2028	1973	7096	1792	1244



Weather	Source	Commentary
Latest forecast (Summary)	Met Office SEPA Natural Resources Wales	<p>Today: Frosty with patchy dense freezing fog across central and southern areas, clearing to leave sunny spells. Very windy in north with a band of heavy rain moving southeast across Scotland and Northern Ireland, turning to snow over the Highlands later.</p> <p>Tonight: Rain and hill snow in north clearing to blustery wintry showers. Frost and patchy fog over far south, lifting as band of cloud and some rain or drizzle sinks southwards.</p>
General Weather Concerns e.g. wind, rain, snow, flooding, GB Weather Warnings	Met Office Weather Warnings SEPA Natural Resources Wales	<p>UK Weather Warnings Yellow warning of fog: Areas affected: East Midlands East of England London & South East England South West England Wales West Midlands ACTIVE: Started at: 03:00 GMT on Wed 8 February Ends: 11:00 GMT on Wed 8 February</p>

Weather	Source	Commentary
		<p>Reduced visibility due to freezing fog may lead to some travel disruption.</p> <p>Yellow warning of wind: Areas affected: Highlands & Eilean Siar Starts: 06:00 GMT on Wed 8 February Ends: 17:00 GMT on Wed 8 February Strong south to southwesterly winds bringing some travel disruption and dangerous coastal conditions.</p>
		<p>Flood Warnings</p> <p>0 flood warnings and 11 flood alerts issued for England.</p> <p>2 flood warnings and 0 flood alerts issued for Scotland.</p> <p>0 flood warning and 0 flood alerts issued for Wales.</p>

Contains public sector information licensed under the Open Government Licence v1.0

Further Information	
BM Reports	https://www.bmreports.com
System Balancing Reports	https://www.nationalgrideso.com/balancing-data/system-balancing-reports
Forecast Volumes and Costs	https://www.nationalgrideso.com/balancing-data/forecast-volumes-and-costs
NGESO Insights	https://www.nationalgrideso.com/insights