

National Electricity Transmission System Status Report

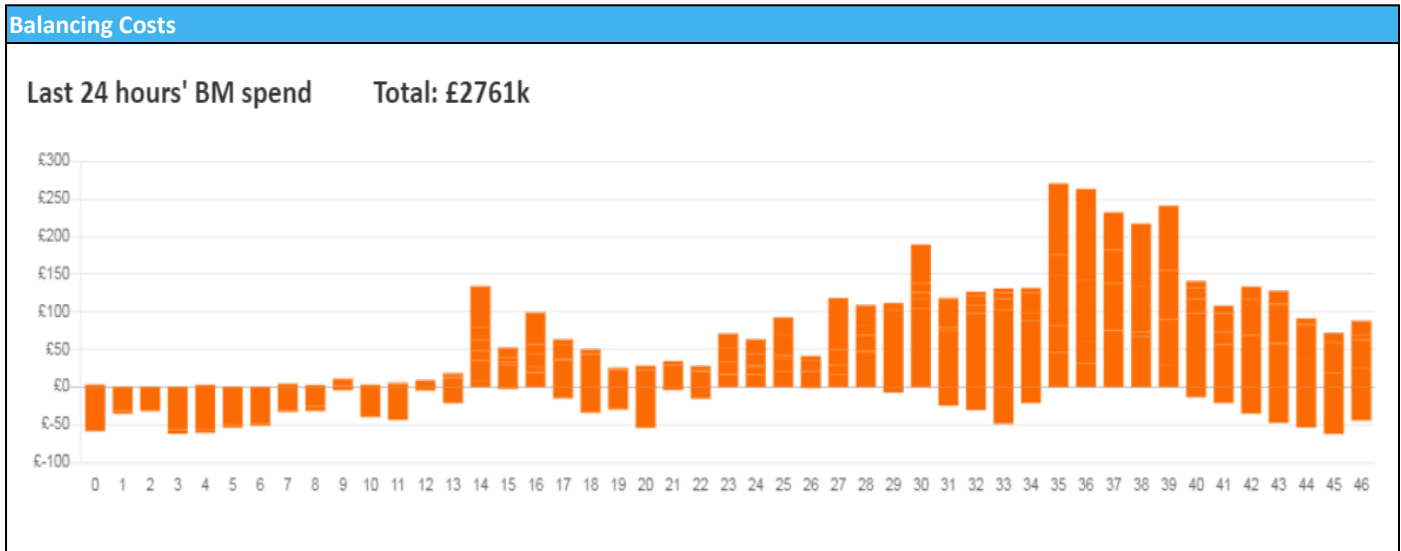


nationalgridESO

National Electricity Transmission System Status Report
Wednesday 25 January 2023

Today's High Level Risk Status Forecast for the next 24h			
General Status		Voltage	
Demand		System Inertia	
System Margins		Weather	
Generation		Transmission	
Active Constraints			
System Warning			

Today's Minimum De-Rated Margin	9966 MW (SP 35)	
Current BMU Largest Loss Risk	Generation	1500 MW
	Demand	1050 MW



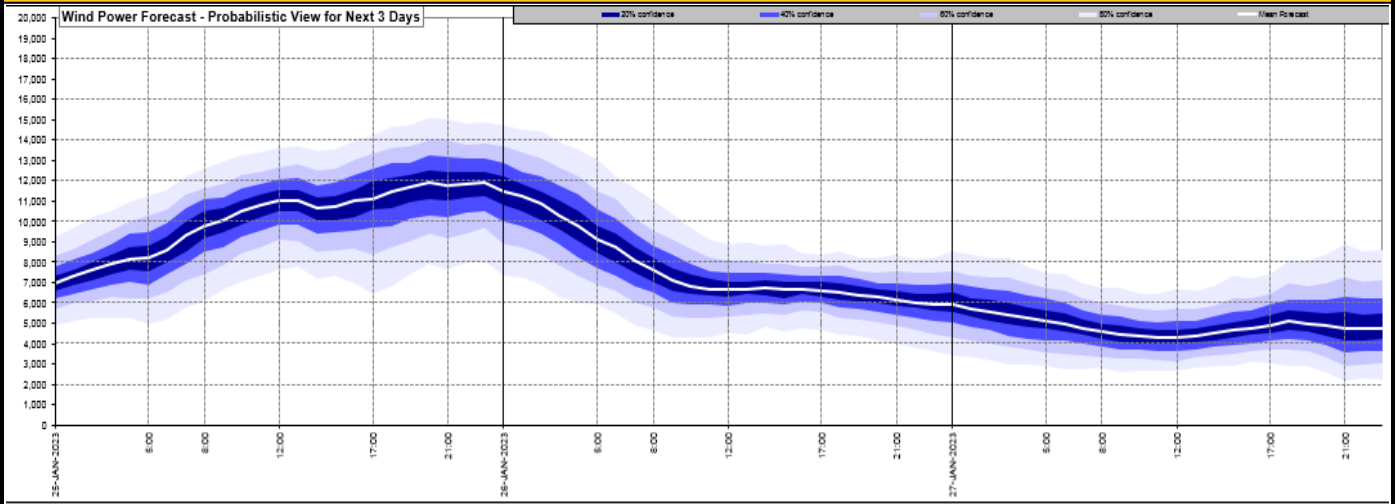
Yesterday's Market Summary

Cash Out Price (Max)	£275.0 (SP 37,38)
Cash Out Price (Min)	£97.00 (SP 10)
Peak Demand Yesterday	44,422 MW
Minimum Demand	24,730 MW

Interconnector Net Transfer Capacity (MWs)

Today	Import	Export	Remarks
Netherlands (BritNed)	1100	1133	Fully Available
France (IFA2)	1014	1014	Fully Available
Belgium (Nemo)	1000	1025	Fully Available
Ireland (EWIC)	500	530	Fully Available
France (ElecLink)	1014	1014	Fully Available
France (IFA)	1000	1000	Partially available
Northern Ireland (MOYLE)	500	500	Fully Available
Norway (NSL)	1400	1400	Fully Available

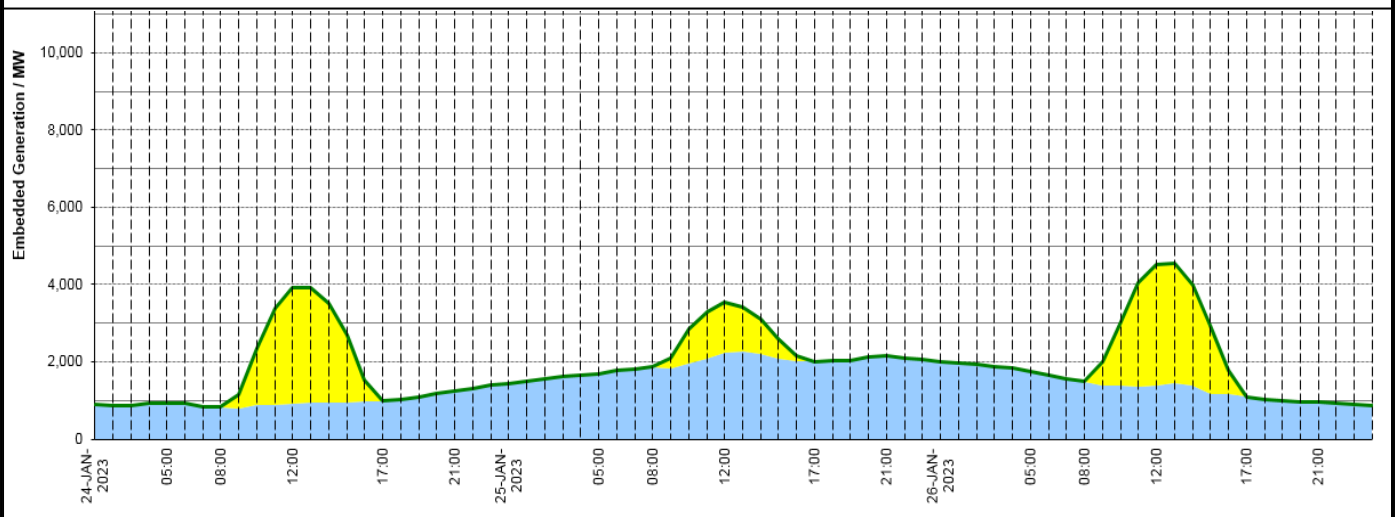
Wind Power Forecast



Expected embedded generation (MWs)

Embedded Generation Forecast

Embedded Generation Estimates													Last run: 25-Jan-2023 04:33:56				
	24-JAN-2023					25-JAN-2023					26-JAN-2023						
	05:00	08:00	12:00	17:00	21:00	00:00	05:00	08:00	12:00	17:00	21:00	00:00	05:00	08:00	12:00	17:00	21:00
Solar (MW)	0	0	3001	0	0	0	0	0	1306	0	0	0	0	0	3134	0	0
Wind (MW)	934	824	914	991	1253	1429	1701	1871	2229	2009	2145	2000	1744	1485	1396	1092	953
STOR (MW)	0	0	0	0	0	0	0	0	0	0	0	0	0	0	0	0	0
Total (MW)	934	824	3915	991	1253	1429	1701	1871	3535	2009	2145	2000	1744	1485	4530	1092	953



Weather	Source	Commentary
Latest forecast (Summary)	Met Office SEPA Natural Resources Wales	<p>Today: Cloudy start for many with some freezing fog over parts of southern UK at first. Early rain over Scotland moves southwards reaching southern England later this afternoon. Brighter conditions follow, with some showers in the far north.</p> <p>Tonight: Early evening rain over southern England soon clears away southwards. Otherwise, clear spells and a dry, chilly night for many, but some showers in the far north.</p>
General Weather Concerns e.g. wind, rain, snow, flooding, GB Weather Warnings	Met Office Weather Warnings SEPA Natural Resources Wales	<p>UK Weather Warnings Yellow warning of fog Areas affected: London & South East England South West England ACTIVE Started at: 22:37 GMT on Tue 24 January Ends: 08:00 GMT on Wed 25 January</p> <p>Flood Warnings 23 flood warnings and 36 flood alerts issued for England. 0 flood warnings and 0 flood alerts issued for Scotland. 0 flood warning and 0 flood alerts issued for Wales.</p>

Weather	Source	Commentary

Contains public sector information licensed under the Open Government Licence v1.0

Further Information	
BM Reports	https://www.bmreports.com
System Balancing Reports	https://www.nationalgrideso.com/balancing-data/system-balancing-reports
Forecast Volumes and Costs	https://www.nationalgrideso.com/balancing-data/forecast-volumes-and-costs
NGESO Insights	https://www.nationalgrideso.com/insights