

**National Electricity  
Transmission System Status Report**

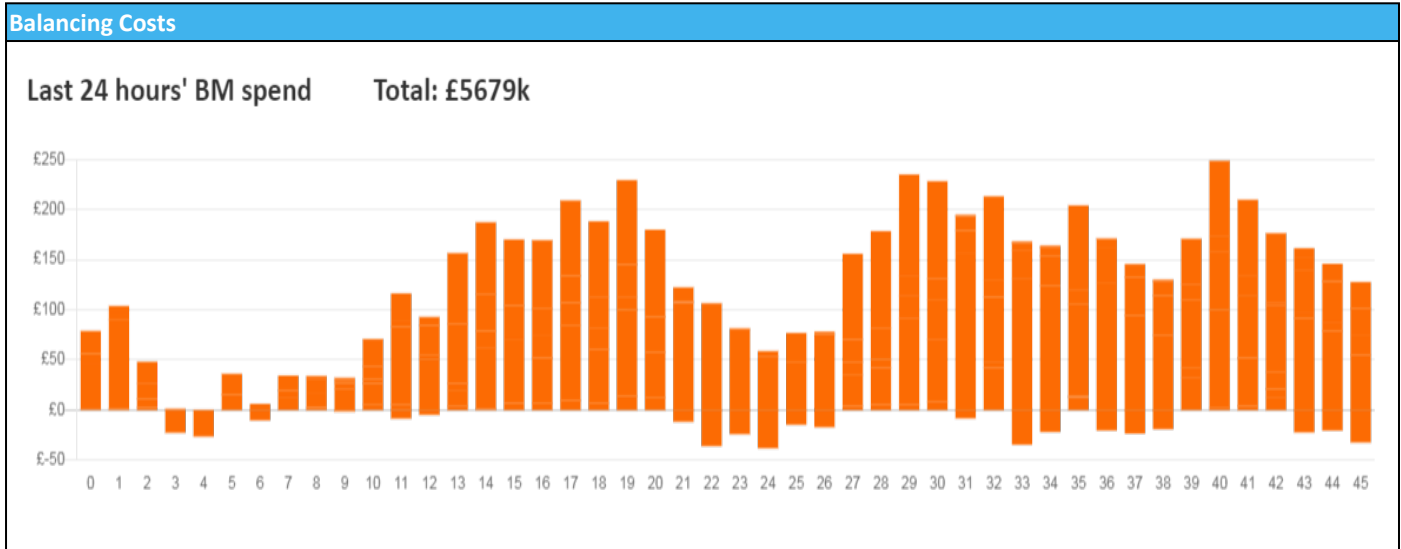


national**grid**ESO

National Electricity Transmission System Status Report  
Wednesday 18 January 2023

Today's High Level Risk Status Forecast for the next 24h			
General Status		Voltage	
Demand		System Inertia	
System Margins		Weather	
Generation		Transmission	
Active Constraints			
<a href="#">System Warning</a>			

<a href="#">Today's Minimum De-Rated Margin</a>	12,229 MW (SP 35)	
Current BMU Largest Loss Risk	Generation	1400 MW
	Demand	1050MW



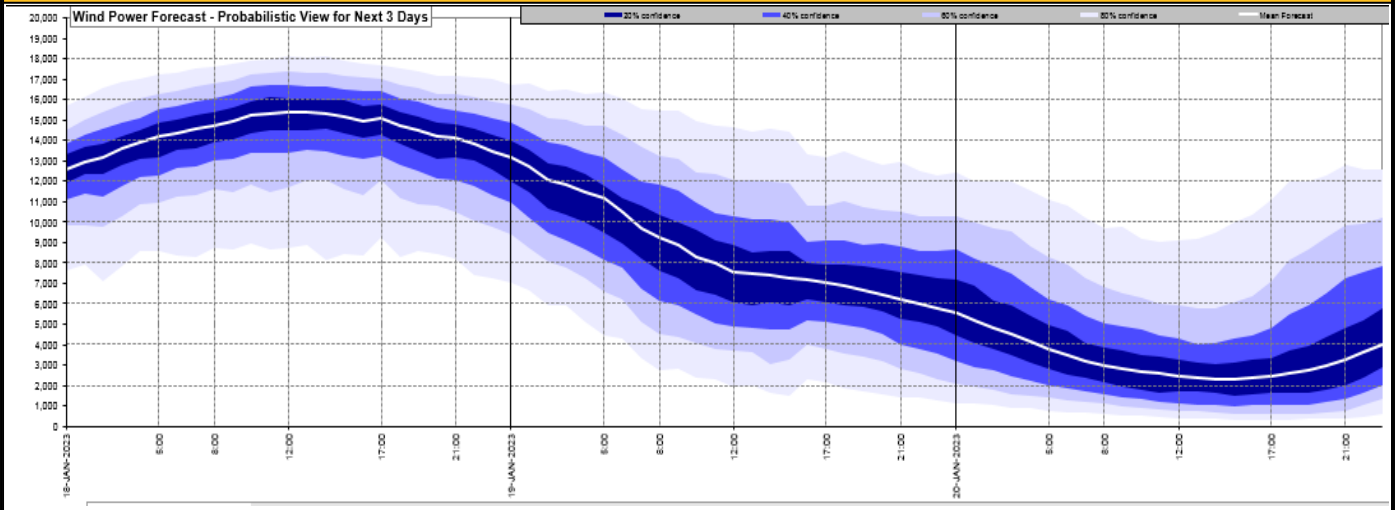
**Yesterday's Market Summary**

<a href="#">Cash Out Price (Max)</a>	£238.00 (SP 31)
<a href="#">Cash Out Price (Min)</a>	£70.30 (SP 5)
<a href="#">Peak Demand Yesterday</a>	44,456 MW
Minimum Demand	24,410 MW

**Interconnector Net Transfer Capacity (MWs)**

Today	Import	Export	Remarks
Netherlands (BritNed)	1100	1133	Fully Available
France (IFA2)	1014	1014	Fully Available
Belgium (Nemo)	1000	1025	Fully Available
Ireland (EWIC)	500	530	Fully Available
France (ElecLink)	1014	1014	Fully Available
France (IFA)	1500	1500	Partially available
Northern Ireland (MOYLE)	500	500	Fully Available
Norway (NSL)	1400	1400	Fully Available

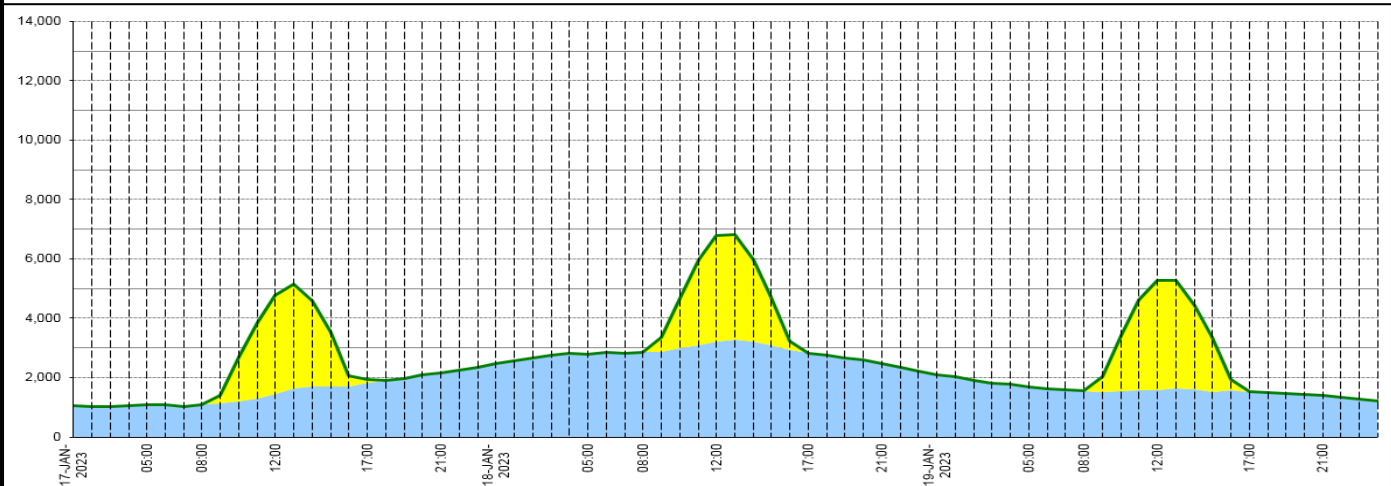
**Wind Power Forecast**



**Expected embedded generation (MWs)**

**Embedded Generation Forecast**

	17-JAN-2023					18-JAN-2023					19-JAN-2023						
	05:00	08:00	12:00	17:00	21:00	00:00	05:00	08:00	12:00	17:00	21:00	00:00	05:00	08:00	12:00	17:00	21:00
Solar (MW)	0	0	3339	111	0	0	0	0	3558	0	0	0	0	0	3672	0	0
Wind (MW)	1073	1099	1445	1830	2171	2476	2783	2855	3218	2832	2464	2095	1700	1558	1590	1528	1396
STOR (MW)	0	0	0	0	0	0	0	0	0	0	0	0	0	0	0	0	0
<b>Total (MW)</b>	<b>1073</b>	<b>1099</b>	<b>4784</b>	<b>1941</b>	<b>2171</b>	<b>2476</b>	<b>2783</b>	<b>2855</b>	<b>6776</b>	<b>2832</b>	<b>2464</b>	<b>2095</b>	<b>1700</b>	<b>1558</b>	<b>5262</b>	<b>1528</b>	<b>1396</b>



Weather	Source	Commentary
Latest forecast (Summary)	<a href="#">Met Office</a> <a href="#">SEPA</a> <a href="#">Natural Resources Wales</a>	<p><b>Today:</b> Cold or very cold for all, with further showers of rain, sleet, hail or snow, these mainly for areas exposed to the brisk northerly winds. Many inland areas are likely to be fine and sunny.</p> <p><b>Tonight:</b> Wintry showers continuing around coasts of the north and east, bringing some snow and ice. Elsewhere, largely clear, with widespread frost.</p>
General Weather Concerns e.g. wind, rain, snow, flooding, GB Weather Warnings	<a href="#">Met Office</a> <a href="#">Weather Warnings</a> <a href="#">SEPA</a> <a href="#">Natural Resources Wales</a>	<p><b>UK Weather Warnings</b> Yellow warning of snow and ice Areas affected: Central, Tayside &amp; Fife   Grampian   Highlands &amp; Eilean Siar   Orkney &amp; Shetland   Strathclyde</p> <p>ACTIVE Started at: 15:53 GMT on Mon 16 January Ends: 09:00 GMT on Wed 18 January Snow and hail showers, heavy at times, bringing further accumulations, icy conditions and disruption to transport.</p>

Weather	Source	Commentary
		<ul style="list-style-type: none"> <li>- Possible travel delays on roads stranding some vehicles and passengers</li> <li>- Possible delays or cancellations to bus, rail and air travel, with some road closures and longer journey times possible</li> <li>- Some rural communities could become cut off</li> <li>- Power cuts may occur and other services, such as mobile phone coverage, may be affected</li> <li>- A chance of injuries from slips and falls on icy surfaces</li> <li>- Untreated pavements and cycle paths might be impassable</li> </ul> <p>Yellow warning of snow and ice Areas affected: East Midlands   North West England   Northern Ireland   SW Scotland, Lothian Borders   Strathclyde   Wales   West Midlands   Yorkshire &amp; Humber</p> <p>ACTIVE Started at: 12:00 GMT on Tue 17 January Ends: 12:00 GMT on Wed 18 January Snow showers and icy stretches may cause some disruption.</p> <ul style="list-style-type: none"> <li>- Some roads and railways affected with longer journey times by road, bus and train services</li> <li>- Some injuries from slips and falls on icy surfaces</li> <li>- Icy patches on some untreated roads, pavements and cycle paths</li> </ul> <p>Yellow warning of ice Areas affected: East of England   London &amp; South East England   South West England</p> <p>ACTIVE Started at: 18:00 GMT on Tue 17 January Ends: 10:00 GMT on Wed 18 January Ice is likely to cause difficult driving conditions overnight into Wednesday morning.</p> <ul style="list-style-type: none"> <li>- Some injuries from slips and falls on icy surfaces</li> <li>- Icy patches on some untreated roads, pavements and cycle paths</li> </ul> <p>Yellow warning of snow and ice Areas affected: South West England   Wales</p> <p>ACTIVE Started at: 18:00 GMT on Tue 17 January Ends: 12:00 GMT on Wed 18 January Snow showers and icy stretches may cause some disruption.</p> <ul style="list-style-type: none"> <li>- Some roads and railways likely to be affected with longer journey times by road, bus and train services</li> <li>- Some injuries from slips and falls on icy surfaces</li> <li>- Probably some icy patches on some untreated roads, pavements and cycle paths</li> </ul> <p><b>Flood Warnings</b> 73 flood warnings and 112 flood alerts issued for England.</p> <p>0 flood warnings and 0 flood alerts issued for Scotland.</p> <p>0 flood warning and 7 flood alerts issued for Wales.</p>

Contains public sector information licensed under the Open Government Licence v1.0

Further Information	
BM Reports	<a href="https://www.bmreports.com">https://www.bmreports.com</a>
System Balancing Reports	<a href="https://www.nationalgrideso.com/balancing-data/system-balancing-reports">https://www.nationalgrideso.com/balancing-data/system-balancing-reports</a>

Further Information	
Forecast Volumes and Costs	<a href="https://www.nationalgrideso.com/balancing-data/forecast-volumes-and-costs">https://www.nationalgrideso.com/balancing-data/forecast-volumes-and-costs</a>
NGESO Insights	<a href="https://www.nationalgrideso.com/insights">https://www.nationalgrideso.com/insights</a>