

**National Electricity
Transmission System Status Report**

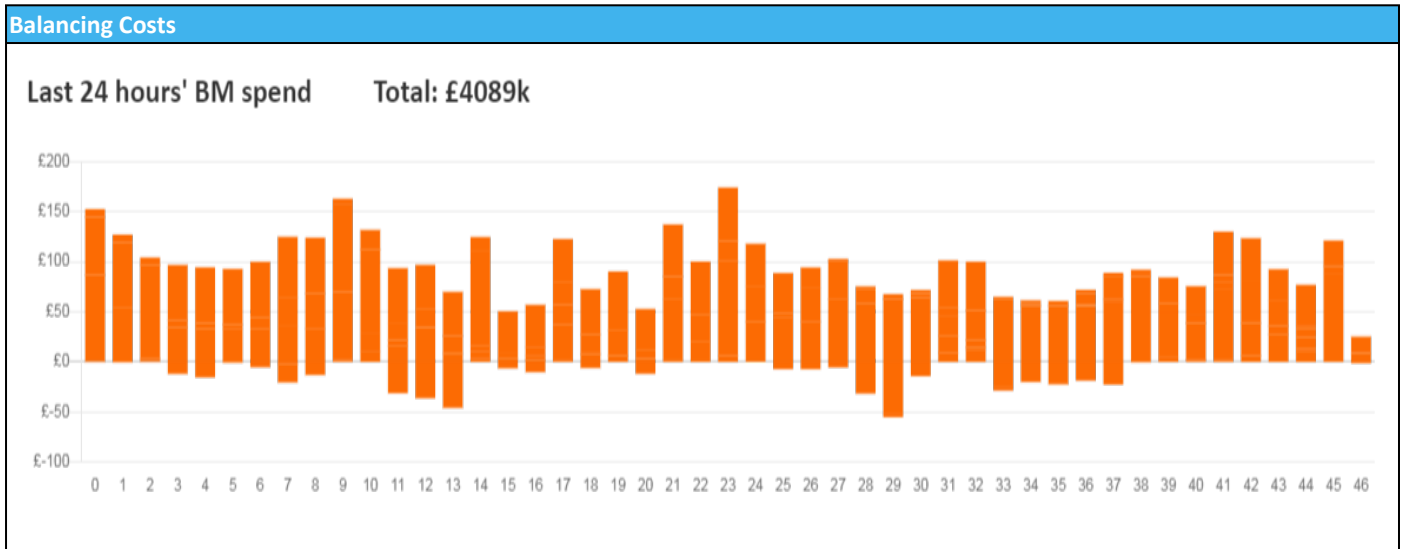


national**grid**ESO

National Electricity Transmission System Status Report
Tuesday 17 January 2023

Today's High Level Risk Status Forecast for the next 24h			
General Status		Voltage	
Demand		System Inertia	
System Margins		Weather	
Generation		Transmission	
Active Constraints			
System Warning			

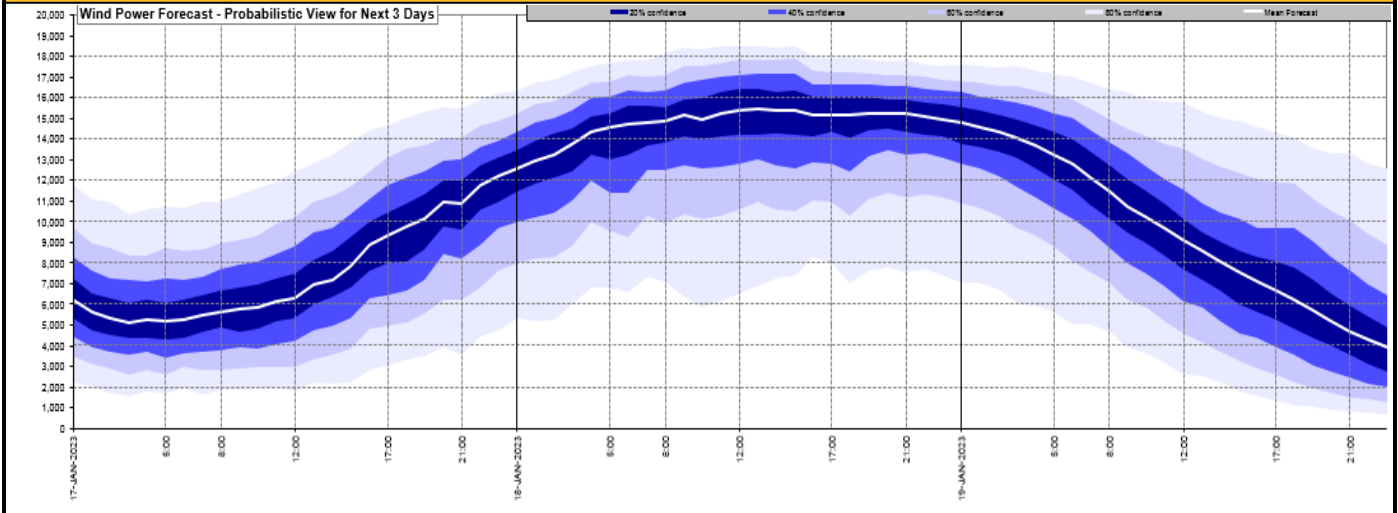
Today's Minimum De-Rated Margin	2,997 MW (SP 18)	
Current BMU Largest Loss Risk	Generation	1300 MW
	Demand	560MW



Yesterday's Market Summary	
Cash Out Price (Max)	£230.00 (SP 19 & 23)
Cash Out Price (Min)	£39.10 (SP 9)
Peak Demand Yesterday	45,146 MW
Minimum Demand	25,650 MW

Interconnector Net Transfer Capacity (MWs)			
Today	Import	Export	Remarks
Netherlands (BritNed)	1100	1133	Fully Available
France (IFA2)	1014	1014	Fully Available
Belgium (Nemo)	1000	1025	Fully Available
Ireland (EWIC)	500	530	Fully Available
France (ElecLink)	1014	1014	Fully Available
France (IFA)	1500	1500	Partially available
Northern Ireland (MOYLE)	500	500	Fully Available
Norway (NSL)	1400	1400	Fully Available

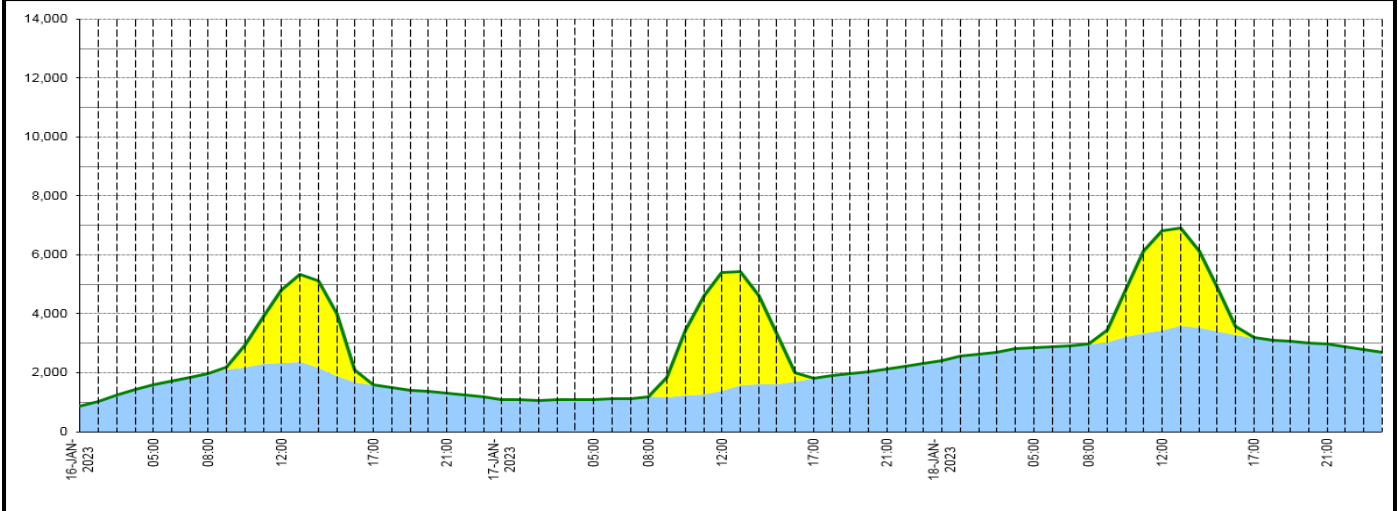
Wind Power Forecast



Expected embedded generation (MWs)

Embedded Generation Forecast

	16-JAN-2023					17-JAN-2023					18-JAN-2023						
	05:00	08:00	12:00	17:00	21:00	00:00	05:00	08:00	12:00	17:00	21:00	00:00	05:00	08:00	12:00	17:00	21:00
Solar (MW)	0	0	2448	0	0	0	0	0	4012	0	0	0	0	0	3369	0	0
Wind (MW)	1576	1972	2342	1588	1294	1094	1078	1189	1386	1798	2126	2398	2849	2968	3436	3187	2979
STOR (MW)	0	0	0	0	0	0	0	0	0	0	0	0	0	0	0	0	0
Total (MW)	1576	1972	4790	1588	1294	1094	1078	1189	5398	1798	2126	2398	2849	2968	6805	3187	2979



Weather	Source	Commentary
Latest forecast (Summary)	Met Office SEPA Natural Resources Wales	<p>Today: Rain and some snow in far southwest soon clearing. Scattered wintry showers in the west and north, with frequent heavy snow showers and gusty winds for northern Scotland. Good deal of dry and sunny weather elsewhere, but cold.</p> <p>Tonight: Heavy sleet and snow showers with blizzards in the hills across northern half of Scotland, easing later. Else, occasional wintry showers in western and some central areas. Frosty inland.</p>
General Weather Concerns e.g. wind, rain, snow, flooding, GB Weather Warnings	Met Office Weather Warnings SEPA Natural Resources Wales	<p>UK Weather Warnings Yellow warning of snow and ice Areas affected: North West England Northern Ireland Wales</p> <p>ACTIVE Started at: 12:00 GMT on Mon 16 January Ends: 12:00 GMT on Tue 17 January Snow showers and icy stretches may cause some disruption.</p> <p>- Some roads and railways likely to be affected with longer journey times by road, bus</p>

Weather	Source	Commentary
		<p>and train services</p> <ul style="list-style-type: none"> - Some injuries from slips and falls on icy surfaces - Probably some icy patches on some untreated roads, pavements and cycle paths
		<p>Yellow warning of snow and ice Areas affected: Central, Tayside & Fife Grampian Highlands & Eilean Siar Orkney & Shetland Strathclyde</p>
		<p>ACTIVE Started at: 15:53 GMT on Mon 16 January Ends: 09:00 GMT on Wed 18 January Snow and hail showers, heavy at times, bringing further accumulations, icy conditions and disruption to transport.</p>
		<ul style="list-style-type: none"> - Possible travel delays on roads stranding some vehicles and passengers - Possible delays or cancellations to bus, rail and air travel, with some road closures and longer journey times possible - Some rural communities could become cut off - Power cuts may occur and other services, such as mobile phone coverage, may be affected - A chance of injuries from slips and falls on icy surfaces - Untreated pavements and cycle paths might be impassable
		<p>Yellow warning of snow and ice Areas affected: South West England</p>
<p>ACTIVE Started at: 00:00 GMT on Tue 17 January Ends: 10:00 GMT on Tue 17 January Rain, sleet and snow followed by clearing skies leading to icy stretches and some disruption to travel.</p>		
<ul style="list-style-type: none"> - Some injuries from slips and falls on icy surfaces - Probably some icy patches on some untreated roads, pavements and cycle paths - Some roads and railways likely to be affected with longer journey times by road, bus and train services 		
<p>Yellow warning of ice Areas affected: London & South East England South West England</p>		
<p>ACTIVE Started at: 00:25 GMT on Tue 17 January Ends: 10:00 GMT on Tue 17 January Ice likely to cause difficult driving conditions at first this morning.</p> <ul style="list-style-type: none"> - Icy stretches on some roads, pavements and cycle paths - Some injuries from slips and falls on icy surfaces 		
<p>Flood Warnings</p> <p>101 flood warnings and 159 flood alerts issued for England.</p> <p>0 flood warnings and 0 flood alerts issued for Scotland.</p> <p>1 flood warning and 9 flood alerts issued for Wales.</p>		

Contains public sector information licensed under the Open Government Licence v1.0

Further Information	
BM Reports	https://www.bmreports.com
System Balancing Reports	https://www.nationalgrideso.com/balancing-data/system-balancing-reports
Forecast Volumes and Costs	https://www.nationalgrideso.com/balancing-data/forecast-volumes-and-costs
NGESO Insights	https://www.nationalgrideso.com/insights