

# National Electricity Transmission System Status Report

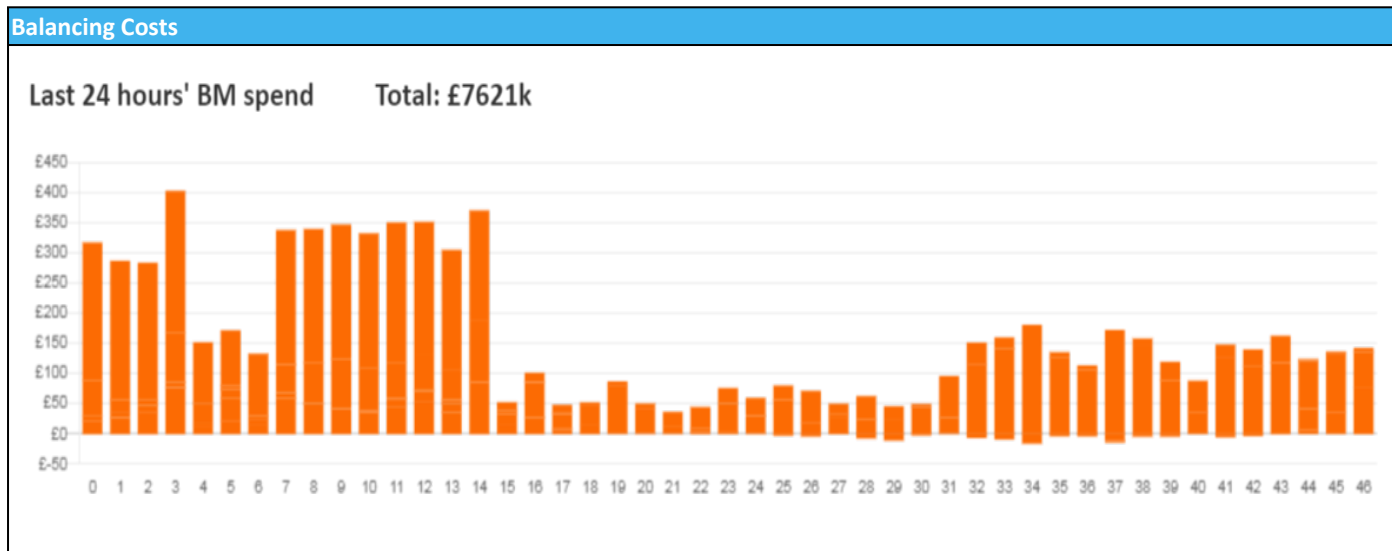


nationalgridESO

National Electricity Transmission System Status Report  
Monday 16 January 2023

Today's High Level Risk Status Forecast for the next 24h			
General Status		Voltage	
Demand		System Inertia	
System Margins		Weather	
Generation		Transmission	
Active Constraints			
<a href="#">System Warning</a>			

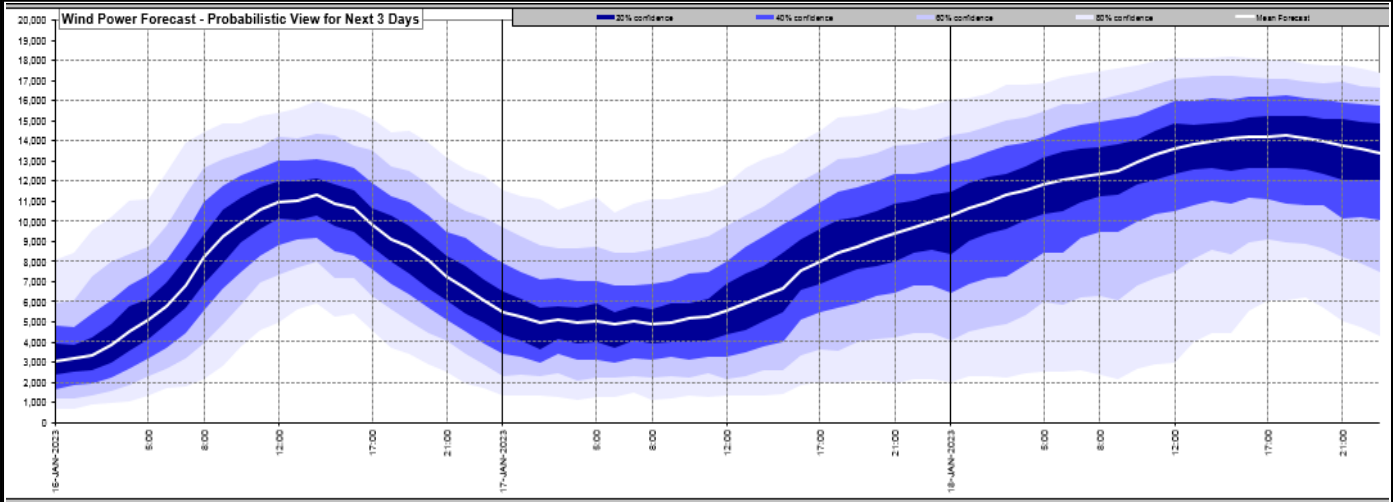
<a href="#">Today's Minimum De-Rated Margin</a>	2,981 MW (SP 39)	
Current BMU Largest Loss Risk	Generation	1400 MW
	Demand	560MW



Yesterday's Market Summary	
<a href="#">Cash Out Price (Max)</a>	£280.00 (SP 36)
<a href="#">Cash Out Price (Min)</a>	-£14.50 (SP 29)
<a href="#">Peak Demand Yesterday</a>	39,981 MW
Minimum Demand	22,310 MW

Interconnector Net Transfer Capacity (MWs)			
Today	Import	Export	Remarks
Netherlands (BritNed)	1100	1133	Fully Available
France (IFA2)	1014	1014	Fully Available
Belgium (Nemo)	1000	1025	Fully Available
Ireland (EWIC)	500	530	Fully Available
France (ElecLink)	1014	1014	Fully Available
France (IFA)	1500	1500	Partially available
Northern Ireland (MOYLE)	500	500	Fully Available
Norway (NSL)	1400	1400	Fully Available

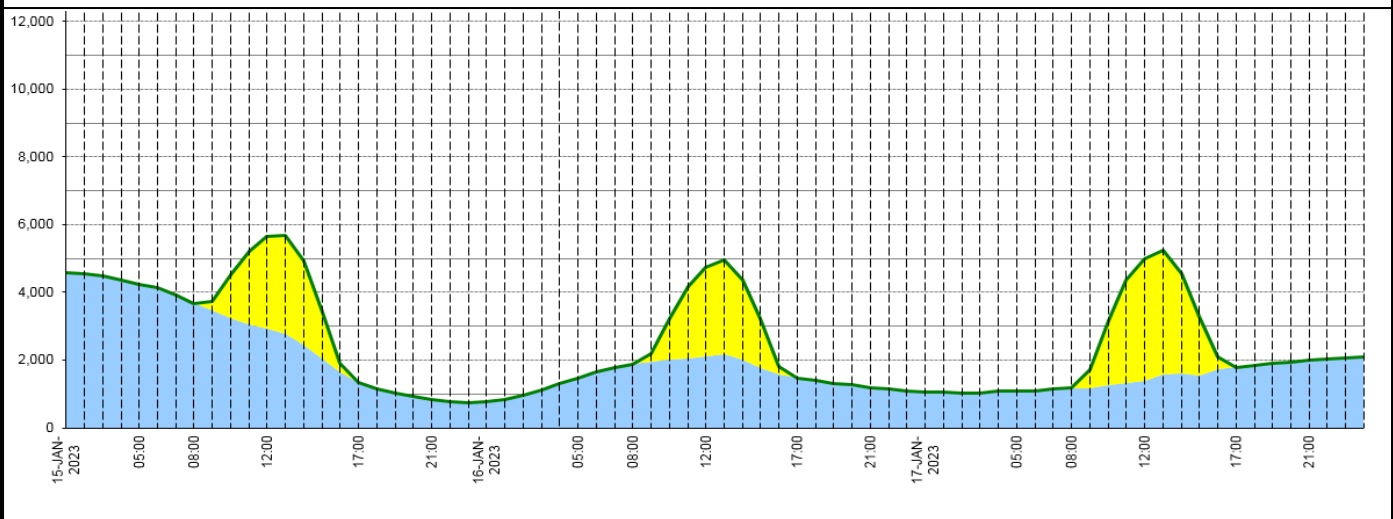
**Wind Power Forecast**



**Expected embedded generation (MWs)**

**Embedded Generation Forecast**

	15-JAN-2023					16-JAN-2023					17-JAN-2023						
	05:00	08:00	12:00	17:00	21:00	00:00	05:00	08:00	12:00	17:00	21:00	00:00	05:00	08:00	12:00	17:00	21:00
Solar (MW)	0	0	2713	0	0	0	0	0	2602	0	0	0	0	0	3627	0	0
Wind (MW)	4250	3684	2943	1327	828	785	1456	1889	2122	1480	1195	1041	1084	1169	1374	1787	1993
STOR (MW)	0	0	0	0	0	0	0	0	0	0	0	0	0	0	0	0	0
<b>Total (MW)</b>	<b>4250</b>	<b>3684</b>	<b>5656</b>	<b>1327</b>	<b>828</b>	<b>785</b>	<b>1456</b>	<b>1889</b>	<b>4724</b>	<b>1480</b>	<b>1195</b>	<b>1041</b>	<b>1084</b>	<b>1169</b>	<b>5001</b>	<b>1787</b>	<b>1993</b>



Weather	Source	Commentary
Latest forecast (Summary)	<a href="#">Met Office</a> <a href="#">SEPA</a> <a href="#">Natural Resources Wales</a>	<p><b>Today:</b> Rain and hill snow clearing from the far southeast. Wintry showers following, mainly across the north but also some windward coasts elsewhere. Dry with sunny spells for many inland areas. Cold, particularly in the north.</p> <p><b>Tonight:</b> Wintry showers continuing across northern and northwestern coasts with some rain and hill snow in the far southwest. Elsewhere dry and clear. Cold with a widespread frost, severe in places.</p>
General Weather Concerns e.g. wind, rain, snow, flooding, GB Weather Warnings	<a href="#">Met Office</a> <a href="#">Weather Warnings</a> <a href="#">SEPA</a> <a href="#">Natural Resources</a>	<p><b>UK Weather Warnings</b> Yellow warning of snow and ice: Areas affected: Grampian   Highlands &amp; Eilean Siar   Orkney &amp; Shetland   Strathclyde ACTIVE: Started at: 14:00 GMT on Sun 15 January Ends: 10:00 GMT on Wed 18 January</p>

Weather	Source	Commentary
	<a href="#">Wales</a>	<p>Snow showers and icy stretches may bring some disruption.</p> <p>Yellow warning of ice: Areas affected: East Midlands   North East England   North West England   Northern Ireland   SW Scotland, Lothian Borders   Strathclyde   Wales   West Midlands   Yorkshire &amp; Humber ACTIVE: Started at: 18:00 GMT on Sun 15 January Ends: 10:00 GMT on Mon 16 January Icy surfaces are expected to develop following wintry showers leading to some difficult travelling conditions.</p> <p>Yellow warning of snow: Areas affected: London &amp; South East England ACTIVE: Started at: 02:00 GMT on Mon 16 January Ends: 08:00 GMT on Mon 16 January There is a chance that heavy rain will turn to snow in places, which may cause some travel disruption on Monday morning.</p> <hr/> <p><b>Flood Warnings</b> 94 flood warnings and 159 flood alerts issued for England.</p> <p>0 flood warnings and 0 flood alerts issued for Scotland.</p> <p>1 flood warning and 13 flood alerts issued for Wales.</p>

*Contains public sector information licensed under the Open Government Licence v1.0*

Further Information	
BM Reports	<a href="https://www.bmreports.com">https://www.bmreports.com</a>
System Balancing Reports	<a href="https://www.nationalgrideso.com/balancing-data/system-balancing-reports">https://www.nationalgrideso.com/balancing-data/system-balancing-reports</a>
Forecast Volumes and Costs	<a href="https://www.nationalgrideso.com/balancing-data/forecast-volumes-and-costs">https://www.nationalgrideso.com/balancing-data/forecast-volumes-and-costs</a>
NGESO Insights	<a href="https://www.nationalgrideso.com/insights">https://www.nationalgrideso.com/insights</a>