

National Electricity Transmission System Status Report

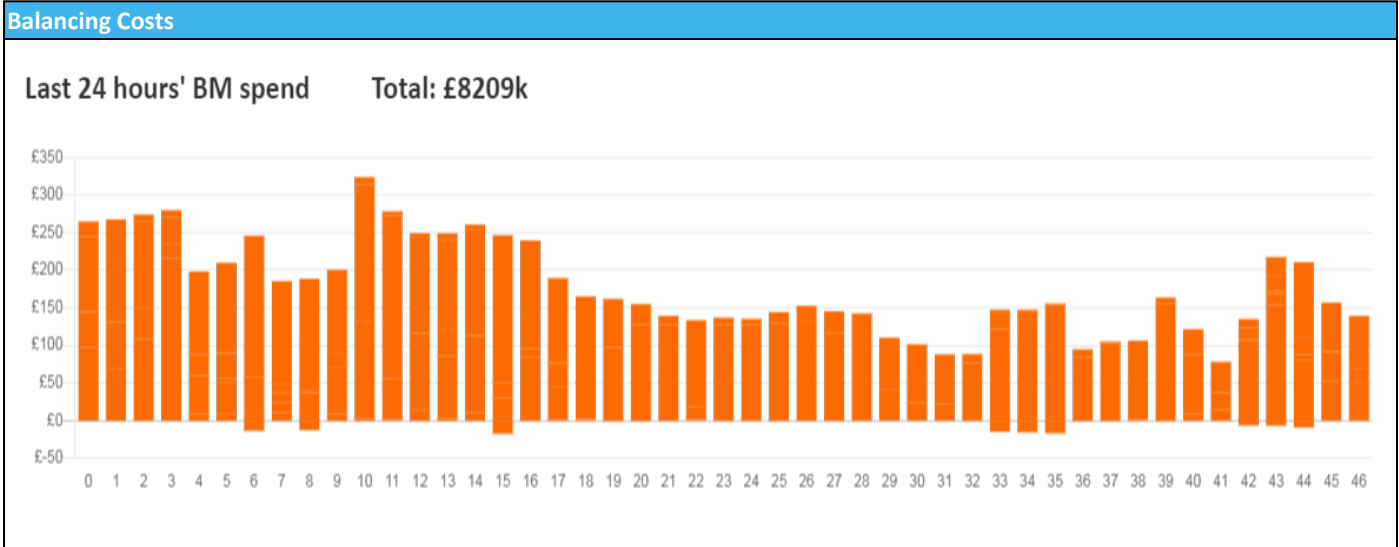


nationalgridESO

National Electricity Transmission System Status Report
Sunday 15 January 2023

Today's High Level Risk Status Forecast for the next 24h			
General Status		Voltage	
Demand		System Inertia	
System Margins		Weather	
Generation		Transmission	
Active Constraints			
System Warning			

Today's Minimum De-Rated Margin	2,973 MW (SP 37)	
Current BMU Largest Loss Risk	Generation	1500 MW
	Demand	750MW



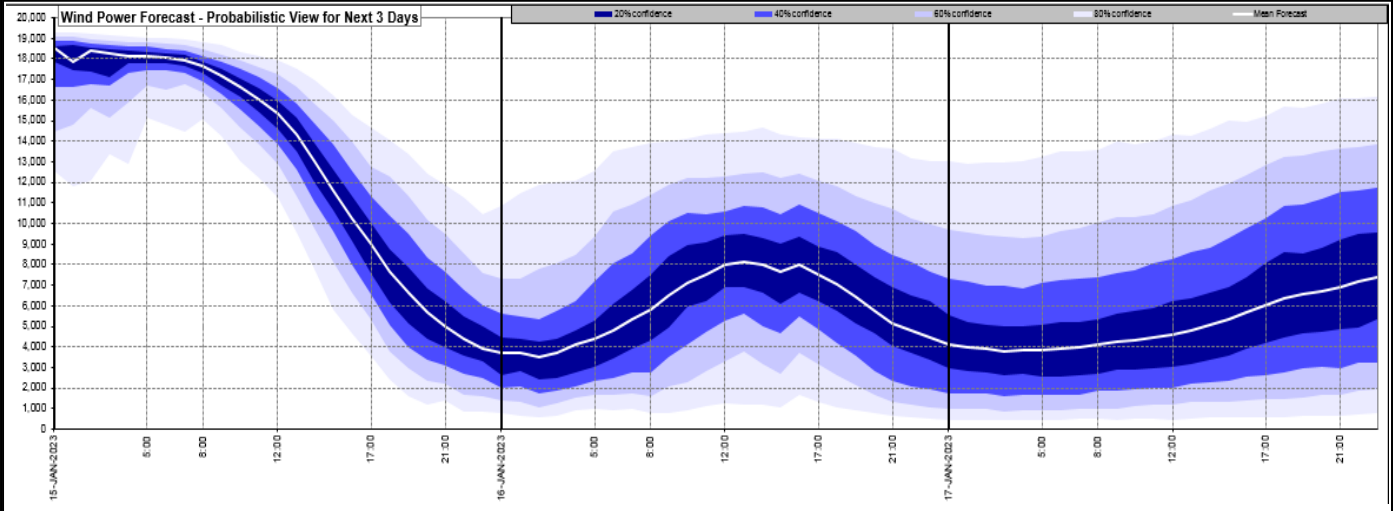
Yesterday's Market Summary

Cash Out Price (Max)	£220.91 (SP 37)
Cash Out Price (Min)	-£73.09 (SP 8)
Peak Demand Yesterday	34,705 MW
Minimum Demand	18,700 MW

Interconnector Net Transfer Capacity (MWs)

Today	Import	Export	Remarks
Netherlands (BritNed)	1100	1133	Fully Available
France (IFA2)	1014	1014	Fully Available
Belgium (Nemo)	1000	1025	Fully Available
Ireland (EWIC)	500	530	Fully Available
France (ElecLink)	1014	1014	Fully Available
France (IFA)	1000	1000	Partially available - Bipole 1 faulted
Northern Ireland (MOYLE)	500	500	Fully Available
Norway (NSL)	1400	1400	Fully Available

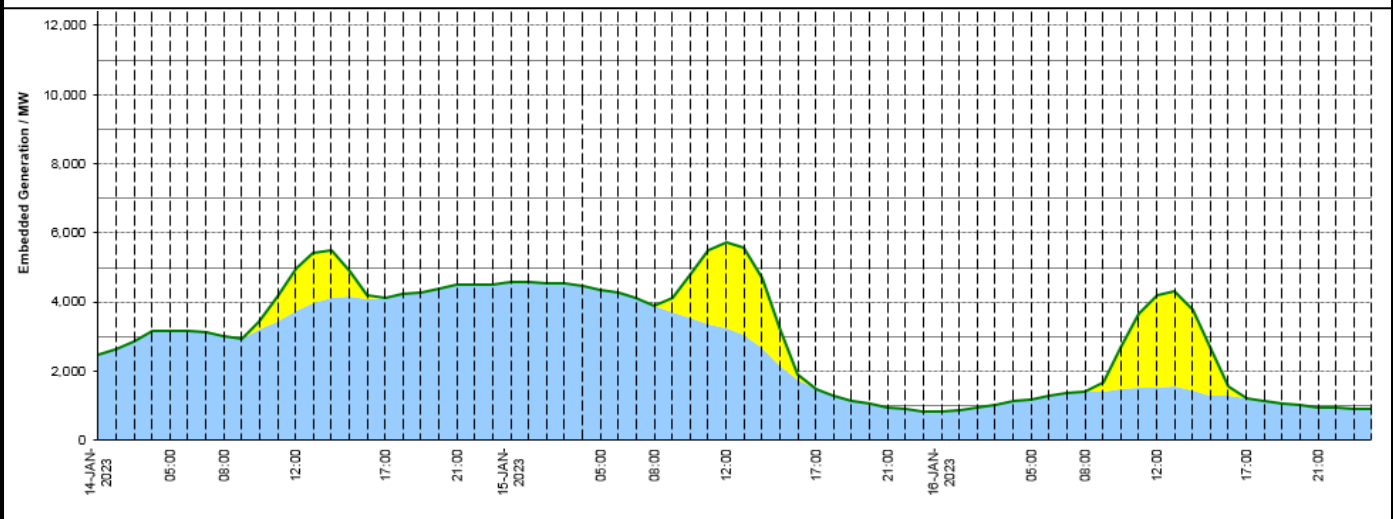
Wind Power Forecast



Expected embedded generation (MWs)

Embedded Generation Forecast

	14-JAN-2023					15-JAN-2023					16-JAN-2023						
	05:00	08:00	12:00	17:00	21:00	00:00	05:00	08:00	12:00	17:00	21:00	00:00	05:00	08:00	12:00	17:00	21:00
Solar (MW)	0	0	1230	0	0	0	0	0	2512	0	0	0	0	0	2671	0	0
Wind (MW)	3160	3003	3751	4137	4511	4567	4350	3906	3230	1487	968	846	1201	1424	1540	1214	968
STOR (MW)	0	0	0	0	0	0	0	0	0	0	0	0	0	0	0	0	0
Total (MW)	3160	3003	4981	4137	4511	4567	4350	3906	5742	1487	968	846	1201	1424	4211	1214	968



Weather	Source	Commentary
Latest forecast (Summary)	Met Office SEPA Natural Resources Wales	<p>Today: Sunny spells and scattered showers, falling increasingly as snow in the north but a mixture of rain and hail further south. A good deal of dry weather in central and eastern parts. Winds easing away from the northeast. Feeling colder.</p> <p>Tonight: Snow showers in the north with a widespread frost. Outbreaks of rain and hill snow developing in central areas. Rain, perhaps turning wintry over hills affecting the far south.</p>
General Weather Concerns e.g. wind, rain, snow, flooding, GB Weather Warnings	Met Office Weather Warnings SEPA Natural Resources Wales	<p>UK Weather Warnings Yellow warning of ice Areas affected: Central, Tayside & Fife Grampian Highlands & Eilean Siar North East England North West England SW Scotland, Lothian Borders Strathclyde ACTIVE Started at: 22:00 GMT on Sat 14 January Ends: 10:00 GMT on Sun 15 January Icy surfaces and high ground snow leading to some difficult travelling conditions in places on Saturday night and Sunday morning.</p>

Weather	Source	Commentary
		<p>Yellow warning of snow and ice Areas affected: Grampian Highlands & Eilean Siar Orkney & Shetland Strathclyde Starts: 17:00 GMT on Sun 15 January Ends: 10:00 GMT on Wed 18 January Snow showers and icy stretches may bring some disruption.</p>
		<p>Flood Warnings 119 flood warnings and 192 flood alerts issued for England. 9 flood warnings and 7 flood alerts issued for Scotland. 8 flood warnings and 26 flood alerts issued for Wales.</p>

Contains public sector information licensed under the Open Government Licence v1.0

Further Information	
BM Reports	https://www.bmreports.com
System Balancing Reports	https://www.nationalgrideso.com/balancing-data/system-balancing-reports
Forecast Volumes and Costs	https://www.nationalgrideso.com/balancing-data/forecast-volumes-and-costs
NGESO Insights	https://www.nationalgrideso.com/insights