

National Electricity Transmission System Status Report

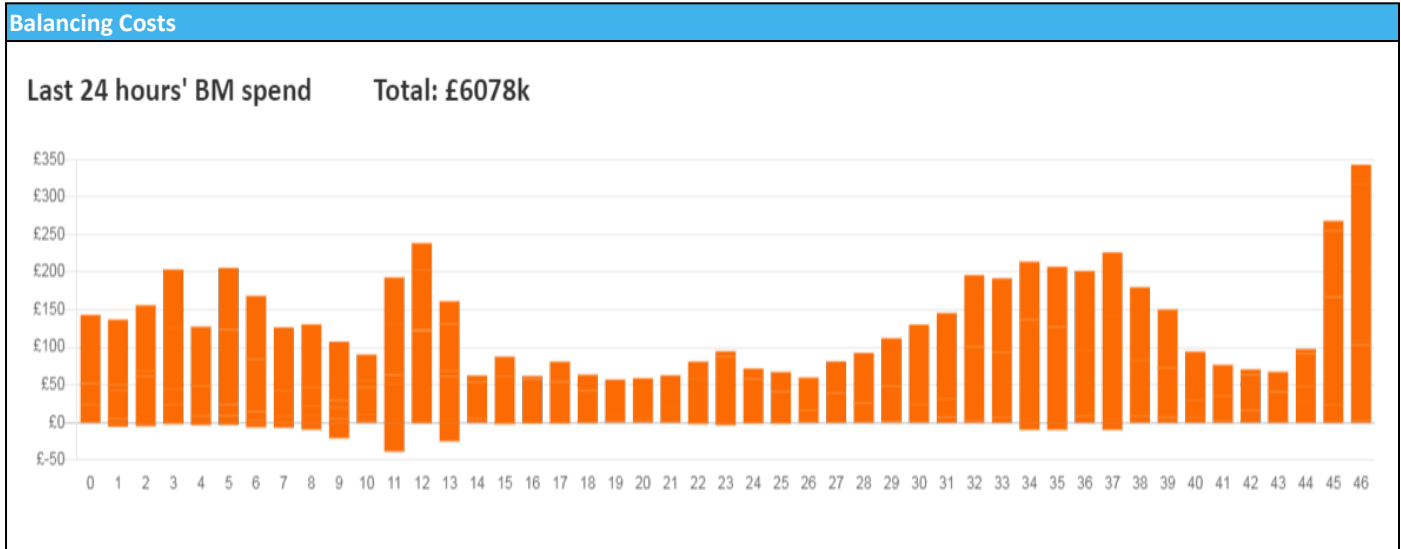


nationalgridESO

National Electricity Transmission System Status Report
Saturday 14 January 2023

Today's High Level Risk Status Forecast for the next 24h			
General Status		Voltage	
Demand		System Inertia	
System Margins		Weather	
Generation		Transmission	
Active Constraints			
System Warning			

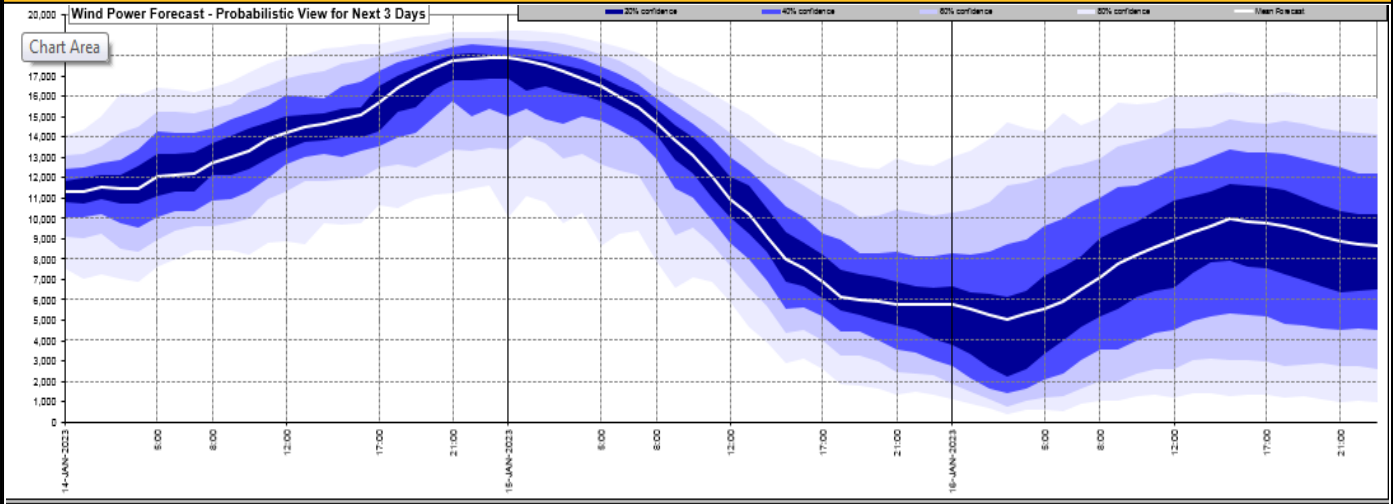
Today's Minimum De-Rated Margin	15,436 MW (SP 36)	
Current BMU Largest Loss Risk	Generation	1500 MW
	Demand	560MW



Yesterday's Market Summary	
Cash Out Price (Max)	£223.00 (SP 36,37,39)
Cash Out Price (Min)	-£17.13 (SP 7)
Peak Demand Yesterday	38,766 MW
Minimum Demand	18,710 MW

Interconnector Net Transfer Capacity (MWs)			
Today	Import	Export	Remarks
Netherlands (BritNed)	1100	1133	Fully Available
France (IFA2)	1014	1014	Fully Available
Belgium (Nemo)	1000	1025	Fully Available
Ireland (EWIC)	500	530	Fully Available
France (ElecLink)	1014	1014	Fully Available
France (IFA)	1000	1000	Partially available - Bipole 1 faulted
Northern Ireland (MOYLE)	500	500	Fully Available
Norway (NSL)	1400	1400	Fully Available

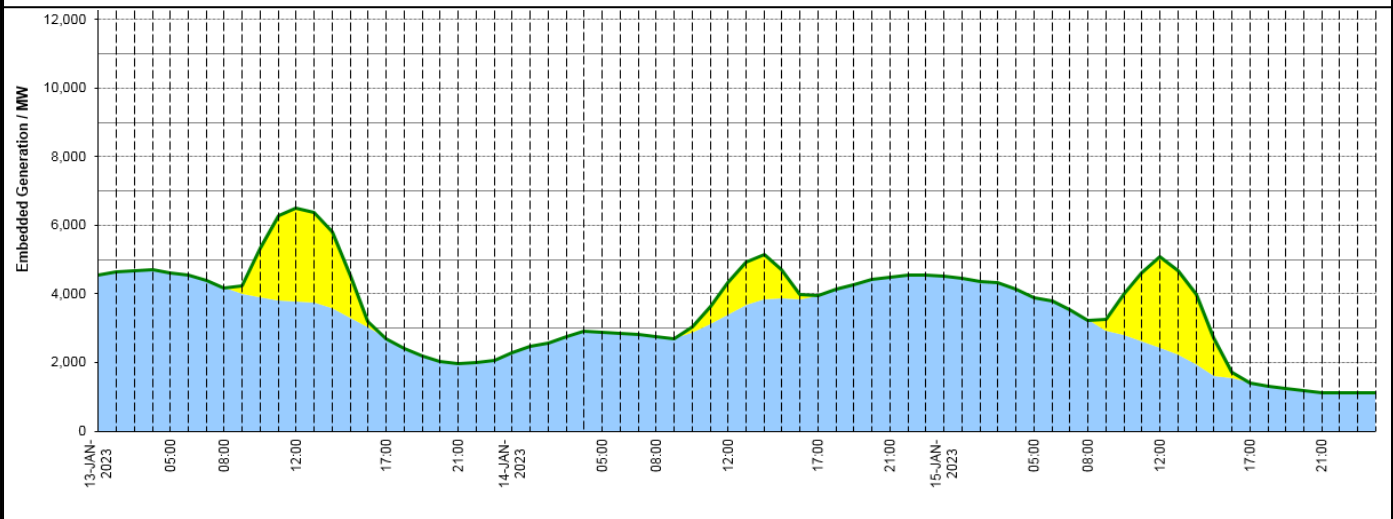
Wind Power Forecast



Expected embedded generation (MWs)

Embedded Generation Forecast

	13-JAN-2023					14-JAN-2023					15-JAN-2023						
	05:00	08:00	12:00	17:00	21:00	00:00	05:00	08:00	12:00	17:00	21:00	00:00	05:00	08:00	12:00	17:00	21:00
Solar (MW)	0	0	2715	0	0	0	0	0	945	0	0	0	0	0	2668	0	0
Wind (MW)	4621	4180	3779	2700	1980	2275	2886	2741	3399	3938	4492	4510	3903	3230	2414	1411	1130
STOR (MW)	0	0	0	0	0	0	0	0	0	0	0	0	0	0	0	0	0
Total (MW)	4621	4180	6494	2700	1980	2275	2886	2741	4344	3938	4492	4510	3903	3230	5082	1411	1130



Weather	Source	Commentary
Latest forecast (Summary)	Met Office SEPA Natural Resources Wales	<p>Today: Cloud and rain clearing east for most but persisting across the far north of Scotland. Frequent blustery showers affecting Scotland and Northern Ireland, isolated elsewhere. Severe gales developing in the northwest later. Turning colder from the north.</p> <p>Tonight: Further showers, particularly in the north and west, and falling as snow over high ground. Some clear spells, most likely in the southeast. Remaining windy with gales in places.</p>
General Weather Concerns e.g. wind, rain, snow, flooding, GB Weather Warnings	Met Office Weather Warnings SEPA Natural Resources Wales	<p>UK Weather Warnings Yellow warning of rain: Areas affected: East Midlands North East England North West England South West England Wales West Midlands Yorkshire & Humber ACTIVE: Started at: 21:00 GMT on Fri 13 January Ends: 12:00 GMT on Sat 14 January Heavy rain bringing the chance of some flooding and disruption.</p>

Weather	Source	Commentary
		<p>Yellow warning of rain: Areas affected: South West England Wales ACTIVE Started at: 22:00 GMT on Fri 13 January Ends: 12:00 GMT on Sat 14 January Heavy rain bringing some flooding and disruption.</p> <p>Yellow warning of rain and wind: Areas affected: Northern Ireland Starts: 14:00 GMT on Sat 14 January Ends: 03:00 GMT on Sun 15 January Strong winds and heavy rain may cause disruption to travel.</p>
		<p>Flood Warnings 81 flood warnings and 157 flood alerts issued for England.</p> <p>3 flood warnings and 3 flood alerts issued for Scotland.</p> <p>1 flood warnings and 39 flood alerts issued for Wales.</p>

Contains public sector information licensed under the Open Government Licence v1.0

Further Information	
BM Reports	https://www.bmreports.com
System Balancing Reports	https://www.nationalgrideso.com/balancing-data/system-balancing-reports
Forecast Volumes and Costs	https://www.nationalgrideso.com/balancing-data/forecast-volumes-and-costs
NGESO Insights	https://www.nationalgrideso.com/insights