

**National Electricity
Transmission System Status Report**

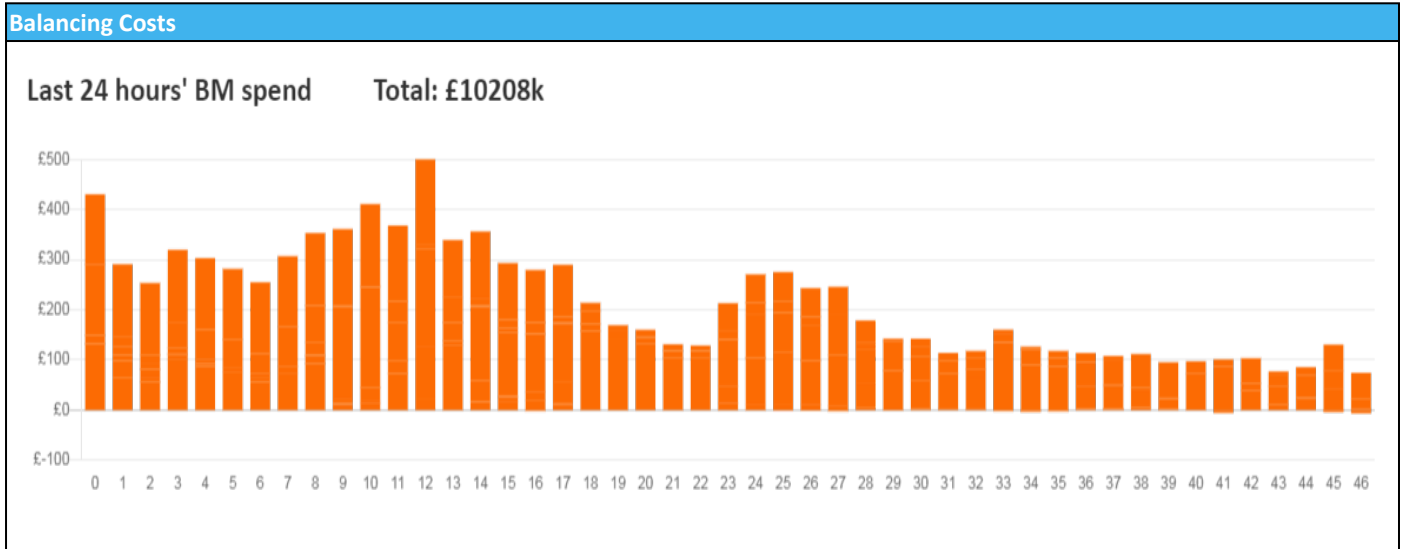


national**grid**ESO

National Electricity Transmission System Status Report
Thursday 12 January 2023

| Today's High Level Risk Status Forecast for the next 24h | | | |
|--|--|----------------|--|
| General Status | | Voltage | |
| Demand | | System Inertia | |
| System Margins | | Weather | |
| Generation | | Transmission | |
| Active Constraints | | | |
| System Warning | | | |

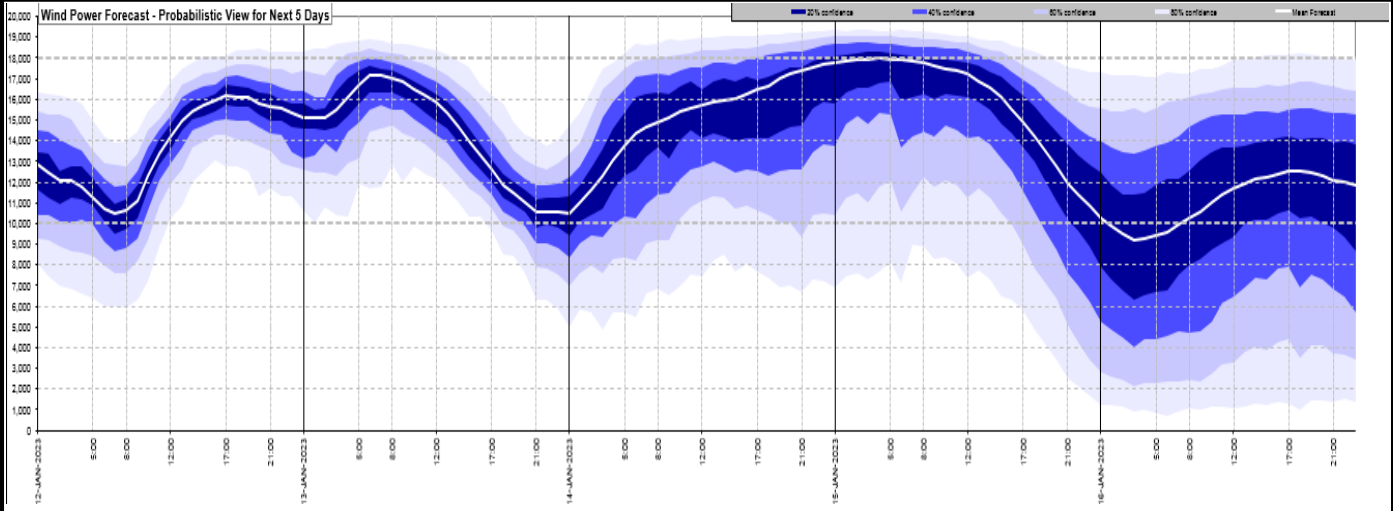
| | | |
|---|-----------------|---------|
| Today's Minimum De-Rated Margin | 9,714MW (SP 18) | |
| Current BMU Largest Loss Risk | Generation | 1500 MW |
| | Demand | 750MW |



| Yesterday's Market Summary | |
|---------------------------------------|-----------------|
| Cash Out Price (Max) | £208.50 (SP 35) |
| Cash Out Price (Min) | -£24.00 (SP 8) |
| Peak Demand Yesterday | 39,984 MW |
| Minimum Demand | 19,617 MW |

| Interconnector Net Transfer Capacity (MWs) | | | |
|---|--------|--------|---------------------|
| Today | Import | Export | Remarks |
| Netherlands (BritNed) | 1100 | 1133 | Fully Available |
| France (IFA2) | 1014 | 1014 | Fully Available |
| Belgium (Nemo) | 1000 | 1025 | Fully Available |
| Ireland (EWIC) | 500 | 530 | Fully Available |
| France (ElecLink) | 1014 | 1014 | Fully Available |
| France (IFA) | 1500 | 1500 | Partially available |
| Northern Ireland (MOYLE) | 500 | 500 | Fully Available |
| Norway (NSL) | 1400 | 1400 | Fully Available |

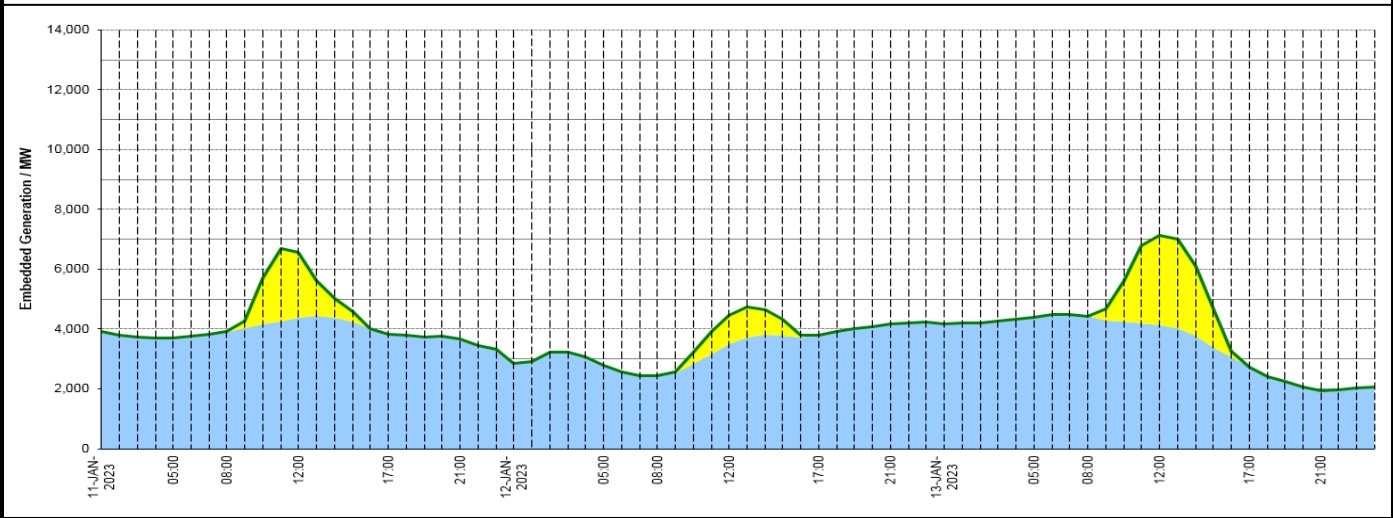
Wind Power Forecast



Expected embedded generation (MWs)

Embedded Generation Forecast

| | 11-JAN-2023 | | | | | 12-JAN-2023 | | | | | 13-JAN-2023 | | | | | | |
|-------------------|-------------|-------------|-------------|-------------|-------------|-------------|-------------|-------------|-------------|-------------|-------------|-------------|-------------|-------------|-------------|-------------|-------------|
| | 05:00 | 08:00 | 12:00 | 17:00 | 21:00 | 00:00 | 05:00 | 08:00 | 12:00 | 17:00 | 21:00 | 00:00 | 05:00 | 08:00 | 12:00 | 17:00 | 21:00 |
| Solar (MW) | 0 | 0 | 2186 | 0 | 0 | 0 | 0 | 0 | 957 | 0 | 0 | 0 | 0 | 0 | 2990 | 0 | 0 |
| Wind (MW) | 3698 | 3910 | 4379 | 3842 | 3670 | 2861 | 2784 | 2434 | 3497 | 3805 | 4164 | 4178 | 4398 | 4430 | 4128 | 2727 | 1923 |
| STOR (MW) | 0 | 0 | 0 | 0 | 0 | 0 | 0 | 0 | 0 | 0 | 0 | 0 | 0 | 0 | 0 | 0 | 0 |
| Total (MW) | 3698 | 3910 | 6565 | 3842 | 3670 | 2861 | 2784 | 2434 | 4454 | 3805 | 4164 | 4178 | 4398 | 4430 | 7118 | 2727 | 1923 |



| Weather | Source | Commentary |
|---|---|---|
| Latest forecast (Summary) | Met Office SEPA Natural Resources Wales | <p>Today: Further rain across southern areas, heavy in places, although turning brighter from the west later. Mild here although windy. Meanwhile northern areas start clearer or brighter with patchy frost, before bands of heavy showers and gales spread from the west.</p> <p>Tonight: Most areas seeing variable cloud and scattered showers, heavy in places, particularly northwest England. Gales affect Northern Ireland at first, then parts of North Wales and northern England, particularly coasts.</p> |
| General Weather Concerns e.g. wind, rain, snow, flooding, GB Weather Warnings | Met Office Weather Warnings SEPA Natural Resources Wales | <p>UK Weather Warnings Yellow warning of rain Persistent heavy rain will affect parts of Wales and Southwest England through Wednesday night and Thursday</p> <p>Flood Warnings 36 flood warnings and 129 flood alerts issued for England.</p> |

| Weather | Source | Commentary |
|---------|--------|---|
| | | 1 flood warnings and 0 flood alerts issued for Scotland. 18 flood warnings and 45 flood alerts issued for Wales. |

Contains public sector information licensed under the Open Government Licence v1.0

| Further Information | |
|----------------------------|---|
| BM Reports | https://www.bmreports.com |
| System Balancing Reports | https://www.nationalgrideso.com/balancing-data/system-balancing-reports |
| Forecast Volumes and Costs | https://www.nationalgrideso.com/balancing-data/forecast-volumes-and-costs |
| NGESO Insights | https://www.nationalgrideso.com/insights |